

# AIR OPS

Bulldog Mountain  
WACOF-2348

5,155 ac at 08/22/2021@2100

Mack Mountain  
WACOF-2338

1,233 ac at 08/22/2021 @ 2100

08/23/2021



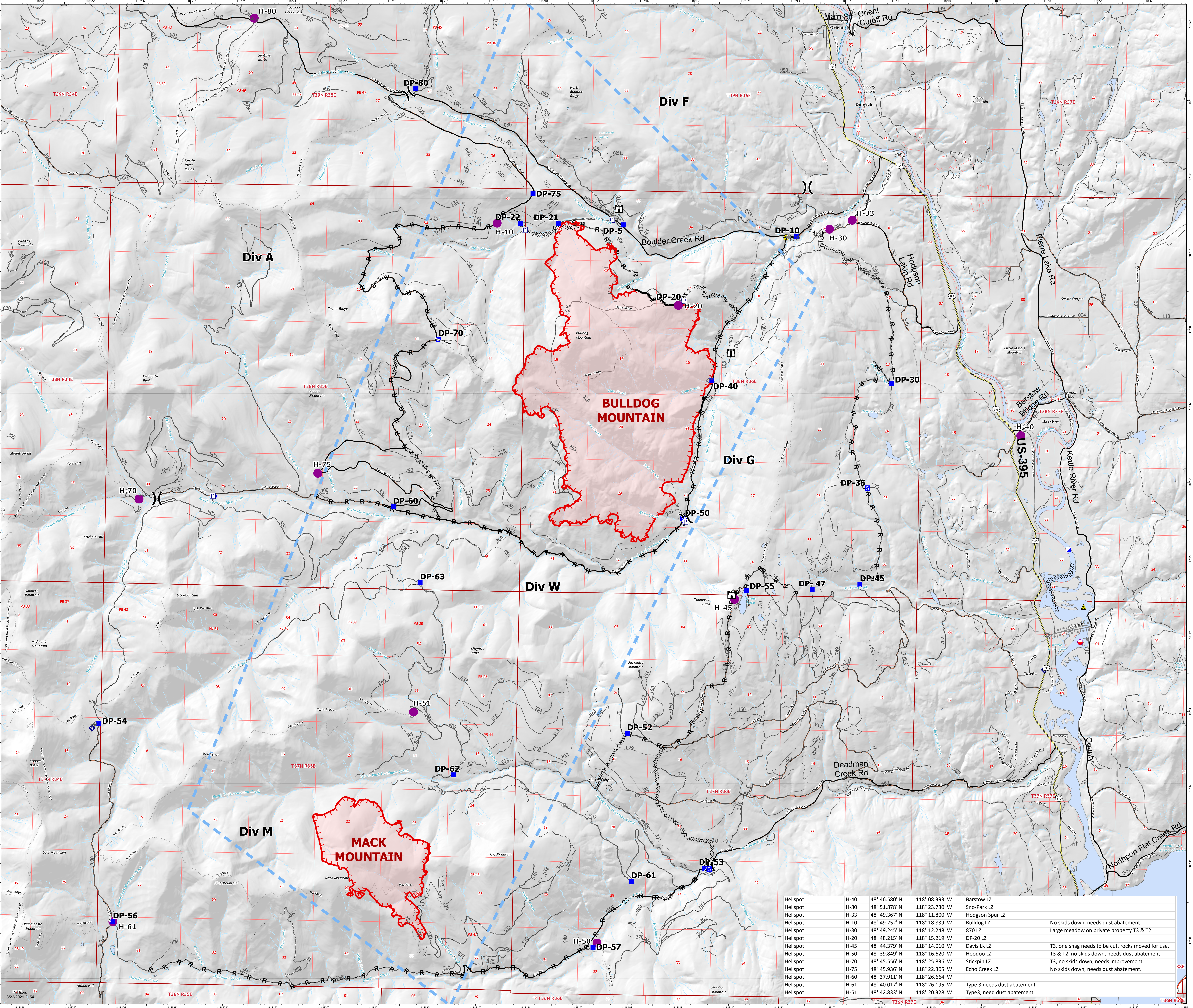
- Mobile Retardant Base
- Helispot
- ⎓ Division Break
- Incident Command Post
- Drop Point
- Staging Area
- ⌘ Lookout
- ⊙ Gate
- ⊙ Bridge
- ⊙ Internet Access
- ▲ Safety Zone
- ▲ Hazard
- ⊙ Water Source
- ⊙ Completed Dozer Line
- ⊙ Completed Hand Line
- ⊙ Completed Road as Line
- ⊙ Planned Burnout
- ⊙ Planned Road as Line
- ⊙ Fence
- ⊙ Temporary Flight Restriction
- Fire Edge
- Contained Line
- Interstate or US Highway
- State Highway or Major Arterial Collector
- Arterial or Collector
- Local Road or City Street
- Freeway Ramp
- Unknown
- <all other values>
- Expressway
- Secondary Hwy
- Local Connector
- Local Road
- Ramp
- 4WD
- Ferry
- Tunnel
- Roads
- Oper\_Maint\_Level
- 1 - BASIC CUSTODIAL CARE (CLOSED)
- 2 - HIGH CLEARANCE VEHICLES
- 3 - SUITABLE FOR PASSENGER CARS
- 4 - MODERATE DEGREE OF USER COMFORT
- 5 - HIGH DEGREE OF USER COMFORT
- <Null>
- NA - NOT APPLICABLE
- <all other values>



0 1/4 1/2 3/4 1  
Miles



1:27,285



Helispot	H-40	48° 46.580' N	118° 08.393' W	Barstow LZ	
Helispot	H-80	48° 51.878' N	118° 23.730' W	Sno-Park LZ	
Helispot	H-33	48° 49.367' N	118° 11.800' W	Hodgson Spur LZ	
Helispot	H-10	48° 49.252' N	118° 18.839' W	Bulldog LZ	No skids down, needs dust abatement.
Helispot	H-30	48° 49.245' N	118° 12.248' W	870 LZ	Large meadow on private property T3 & T2.
Helispot	H-20	48° 48.215' N	118° 15.219' W	DP-20 LZ	
Helispot	H-45	48° 44.379' N	118° 14.010' W	Davis Lk LZ	T3, one snag needs to be cut, rocks moved for use.
Helispot	H-50	48° 39.849' N	118° 16.620' W	Hoodoo LZ	T3 & T2, no skids down, needs dust abatement.
Helispot	H-70	48° 45.556' N	118° 25.836' W	Stickpin LZ	T3, no skids down, needs improvement.
Helispot	H-75	48° 45.936' N	118° 22.305' W	Echo Creek LZ	No skids down, needs dust abatement.
Helispot	H-60	48° 37.911' N	118° 26.664' W		
Helispot	H-61	48° 40.017' N	118° 26.195' W	Type 3 needs dust abatement	
Helispot	H-51	48° 42.833' N	118° 20.328' W	Type3, need dust abatement	