

# IAP Map

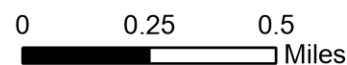
Bulldog Mountain  
WACOF-2348  
8/23/2021 Day

5,155 acres at 08/22/2021@2100



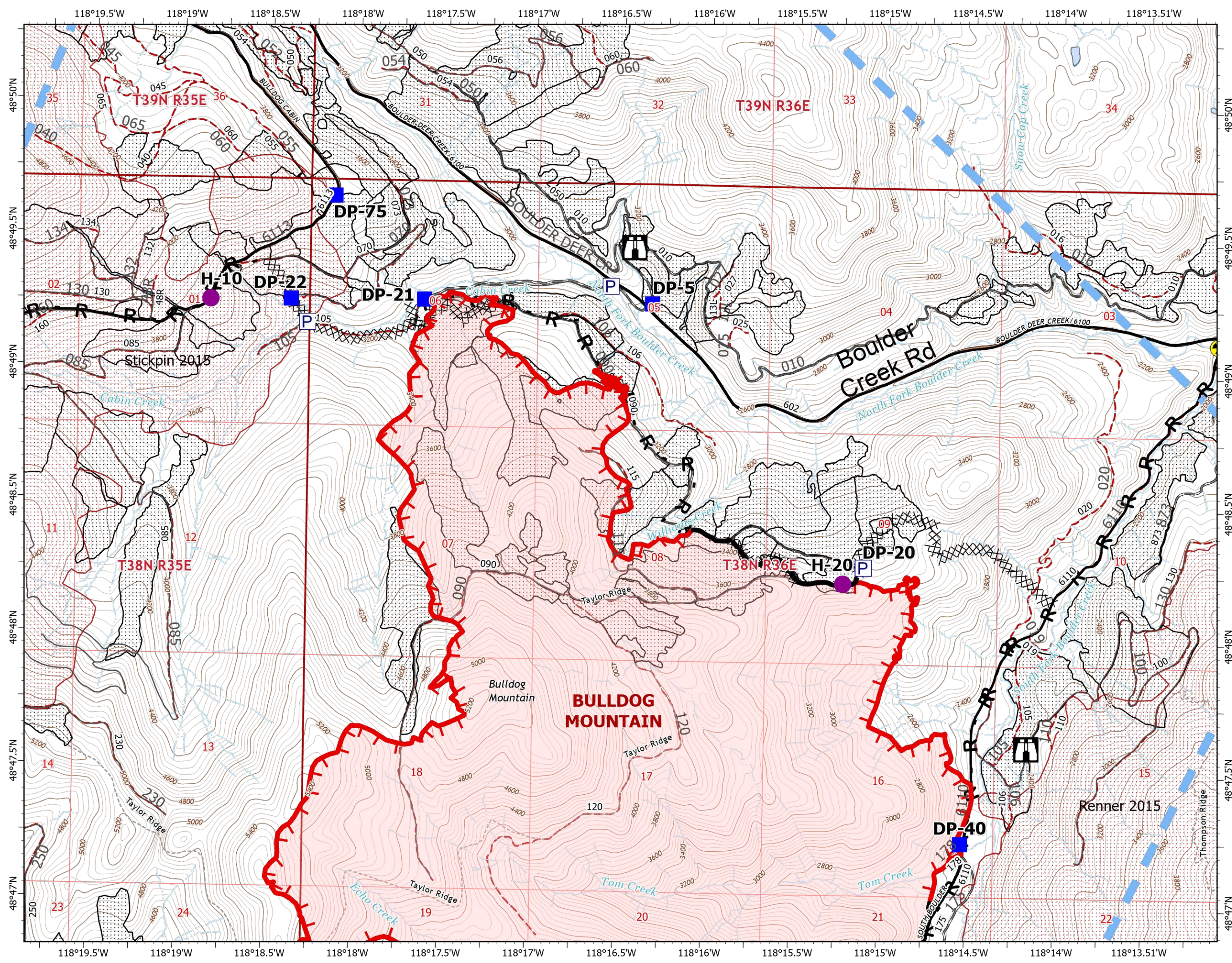
North Tile

- Helispot
  - Drop Point
  - 🏠 Lookout
  - ⚠ Hazard
  - ⊗ Completed Dozer Line
  - Completed Road as Line
  - ▭ Temporary Flight Restriction
  - Fire Edge
  - Contained Line
  - ▭ Wildfire Daily Fire Perimeter
  - ▭ Burn Scars
  - ▭ Timber Sales
  - - FS Closed Roads
  - Roads
- Roads**
- Oper\_Maint\_Level**
- 1 - BASIC CUSTODIAL CARE (CLOSED)
  - 2 - HIGH CLEARANCE VEHICLES
  - 3 - SUITABLE FOR PASSENGER CARS
  - 4 - MODERATE DEGREE OF USER COMFORT
  - 5 - HIGH DEGREE OF USER COMFORT
  - <Null>
  - NA - NOT APPLICABLE
  - <all other values>
- ▭ Roadless Areas



Scale: 1:24,000

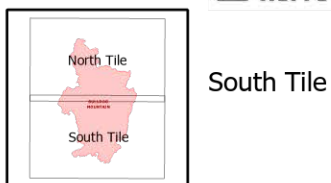
8/22/2021 2123  
Acres from IR and GPS  
North American 1983 Datum. LatLong Grid



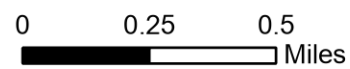
# IAP Map

Bulldog Mountain  
WACOF-2348  
8/23/2021 Day

5,155 acres at 08/22/2021@2100

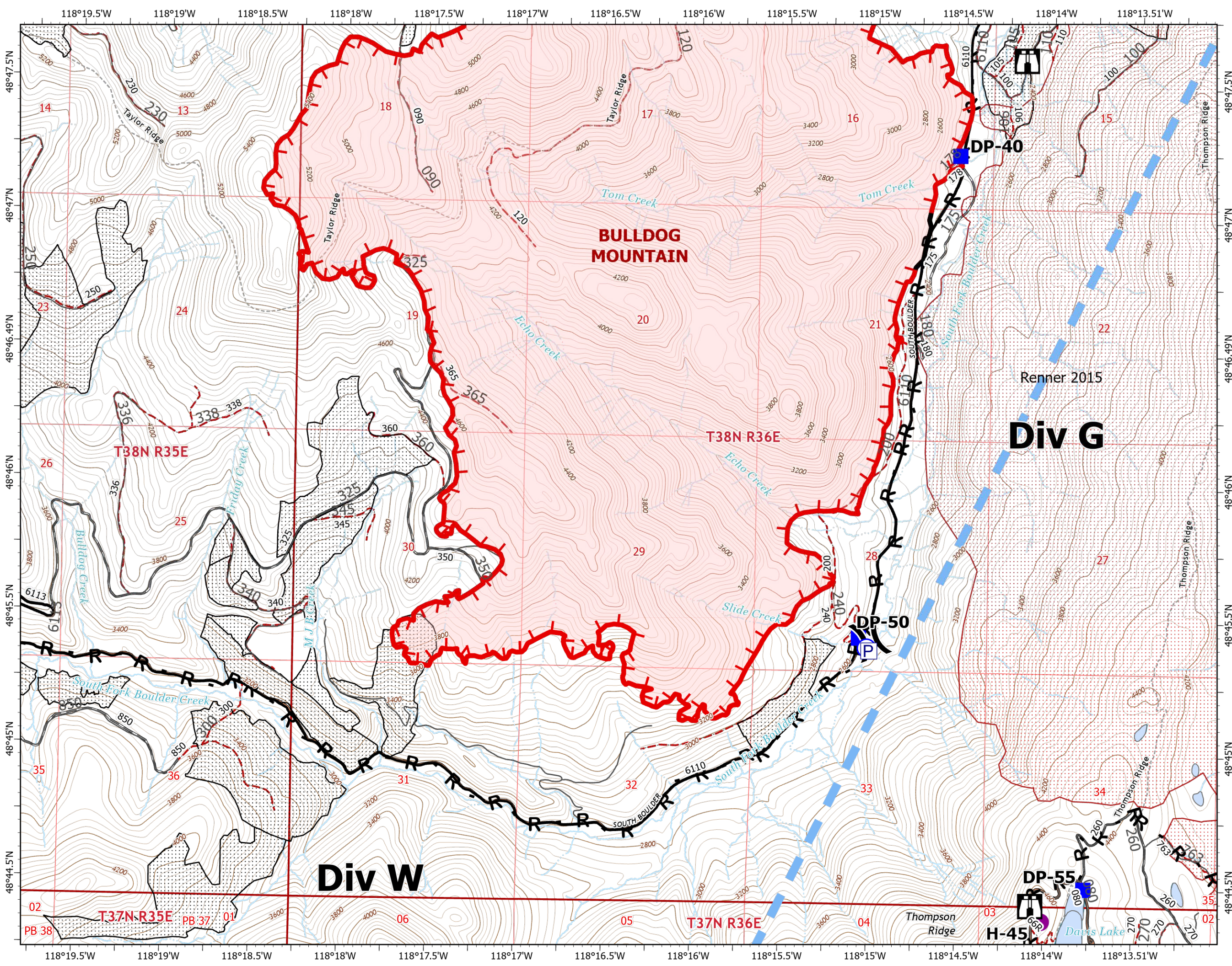


- ( ) Division Break
  - Drop Point
  - Ⓜ Water Source
  - Completed Road as Line
  - ▬ Temporary Flight Restriction
  - ┃ Fire Edge
  - ▬ Contained Line
  - ▬ Wildfire Daily Fire Perimeter
  - ▨ Timber Sales
  - - - FS Closed Roads
  - Roads
- ### Roads
- Oper\_Maint\_Level
- 1 - BASIC CUSTODIAL CARE (CLOSED)
  - 2 - HIGH CLEARANCE VEHICLES
  - 3 - SUITABLE FOR PASSENGER CARS
  - 4 - MODERATE DEGREE OF USER COMFORT
  - 5 - HIGH DEGREE OF USER COMFORT
  - <Null>
  - NA - NOT APPLICABLE
  - <all other values>
- ▨ Roadless Areas



Scale: 1:24,000

8/22/2021 2124  
Acres from IR and GPS  
North American 1983 Datum, LatLong Grid



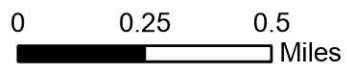
# IAP Map

Mack Mountain  
WACOF-2338  
8/23/2021 Day

1,233 acres at 08/22/2021@2100



- Drop Point
  - Gate
  - Completed Road as Line
  - R Planned Road as Line
  - Temporary Flight Restriction
  - Fire Edge
  - Wildfire Daily Fire Perimeter
  - Roadless Areas
  - FS Closed Roads
  - Roads
- Roads
- Oper\_Maint\_Level
- 1 - BASIC CUSTODIAL CARE (CLOSED)
  - 2 - HIGH CLEARANCE VEHICLES
  - 3 - SUITABLE FOR PASSENGER CARS
  - 4 - MODERATE DEGREE OF USER COMFORT
  - 5 - HIGH DEGREE OF USER COMFORT
  - <Null>
  - NA - NOT APPLICABLE
  - <all other values>



Scale: 1:24,000

