

AIR OPS

Bulldog Mountain
WACOF-2348

5,173 ac at 08/22/2021@2100

Mack Mountain
WACOF-2338

1,233 ac at 08/22/2021 @ 2100

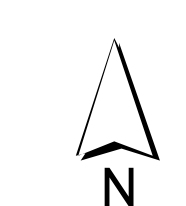
08/24/2021



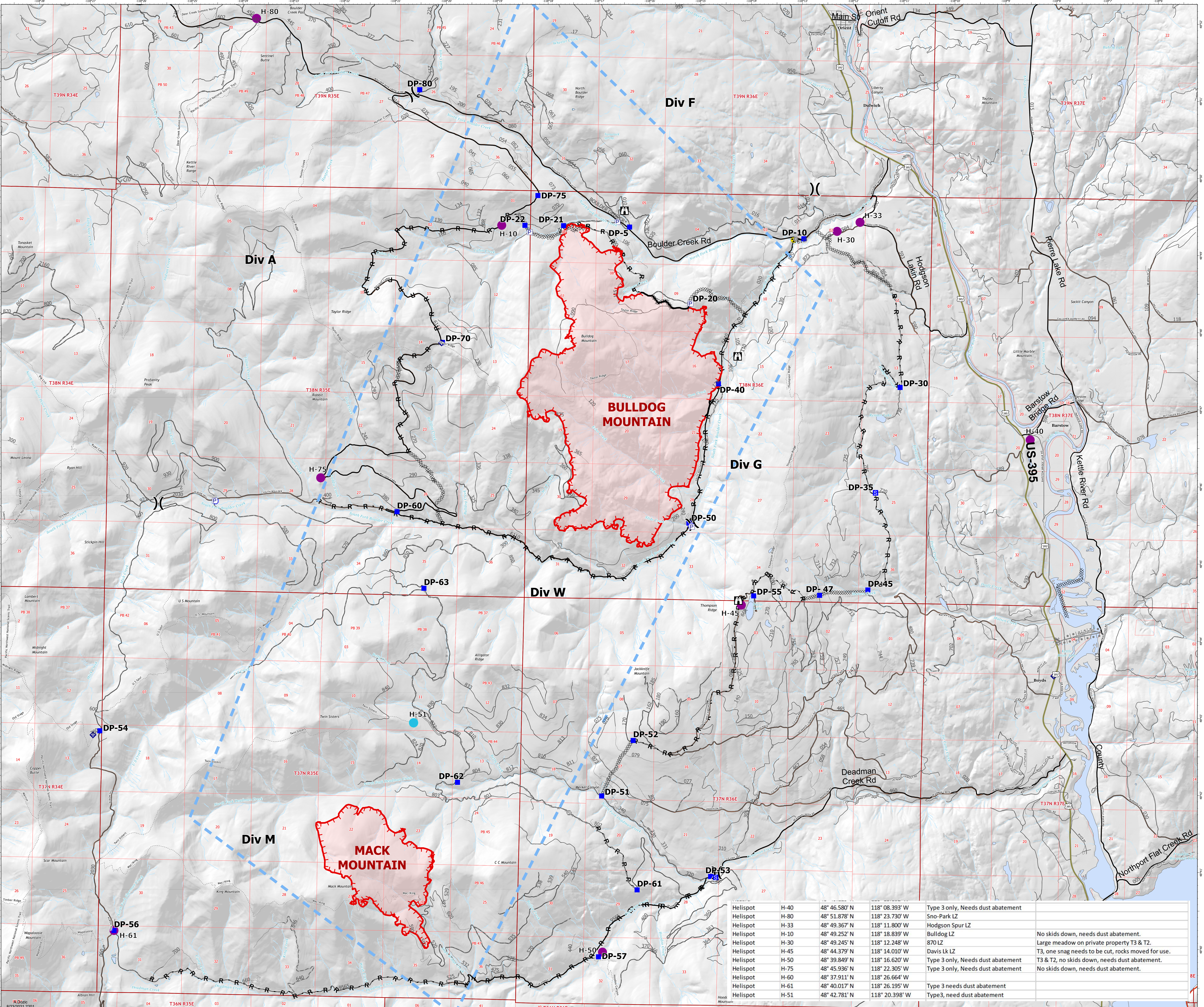
- Helispot
- ⎓ Division Break
- Drop Point
- Staging Area
- ⌘ Lookout
- ⊙ Gate
- ⊙ Bridge
- ⊙ Internet Access
- ⊙ Hazard
- ⊙ Water Source
- ⊙ Completed Dozer Line
- ⊙ Completed Hand Line
- ⊙ Completed Road as Line
- ⊙ Planned Burnout
- ⊙ Planned Road as Line
- ⊙ Access or Improved Road
- ⊙ Fence
- ⊙ Temporary Flight Restriction
- ⊙ Fire Edge
- ⊙ Contained Line
- ⊙ Interstate or US Highway
- ⊙ State Highway or Major Arterial Collector
- ⊙ Arterial or Collector
- ⊙ Local Road or City Street
- ⊙ Freeway Ramp
- ⊙ Unknown
- ⊙ <all other values>
- ⊙ Expressway
- ⊙ Secondary Hwy
- ⊙ Local Connector
- ⊙ Local Road
- ⊙ Ramp
- ⊙ 4WD
- ⊙ Ferry
- ⊙ Tunnel
- Roads
- Oper_Maint_Level
- 1 - BASIC CUSTODIAL CARE (CLOSED)
- 2 - HIGH CLEARANCE VEHICLES
- 3 - SUITABLE FOR PASSENGER CARS
- 4 - MODERATE DEGREE OF USER COMFORT
- 5 - HIGH DEGREE OF USER COMFORT
- <Null>
- NA - NOT APPLICABLE
- <all other values>



0 1/4 1/2 3/4 1
Miles



1:27,285



Helispot	ID	48° N	118° W	Notes
Helispot	H-40	48° 46.580' N	118° 08.393' W	Type 3 only, Needs dust abatement
Helispot	H-80	48° 51.878' N	118° 23.730' W	Sno-Park LZ
Helispot	H-33	48° 49.367' N	118° 11.800' W	Hodgson Spur LZ
Helispot	H-10	48° 49.252' N	118° 11.839' W	Bulldog LZ
Helispot	H-30	48° 49.245' N	118° 12.248' W	870 LZ
Helispot	H-45	48° 44.379' N	118° 14.010' W	Davis Lk LZ
Helispot	H-50	48° 39.849' N	118° 16.620' W	Type 3 only, Needs dust abatement
Helispot	H-75	48° 45.936' N	118° 22.305' W	Type 3 only, Needs dust abatement
Helispot	H-60	48° 37.911' N	118° 26.664' W	No skids down, needs dust abatement.
Helispot	H-61	48° 40.017' N	118° 26.195' W	T3 & T2, no skids down, needs dust abatement.
Helispot	H-51	48° 42.781' N	118° 20.398' W	No skids down, needs dust abatement.
Helispot	H-53	48° 40.017' N	118° 26.195' W	Type 3 needs dust abatement
Helispot	H-51	48° 42.781' N	118° 20.398' W	Type3, need dust abatement