

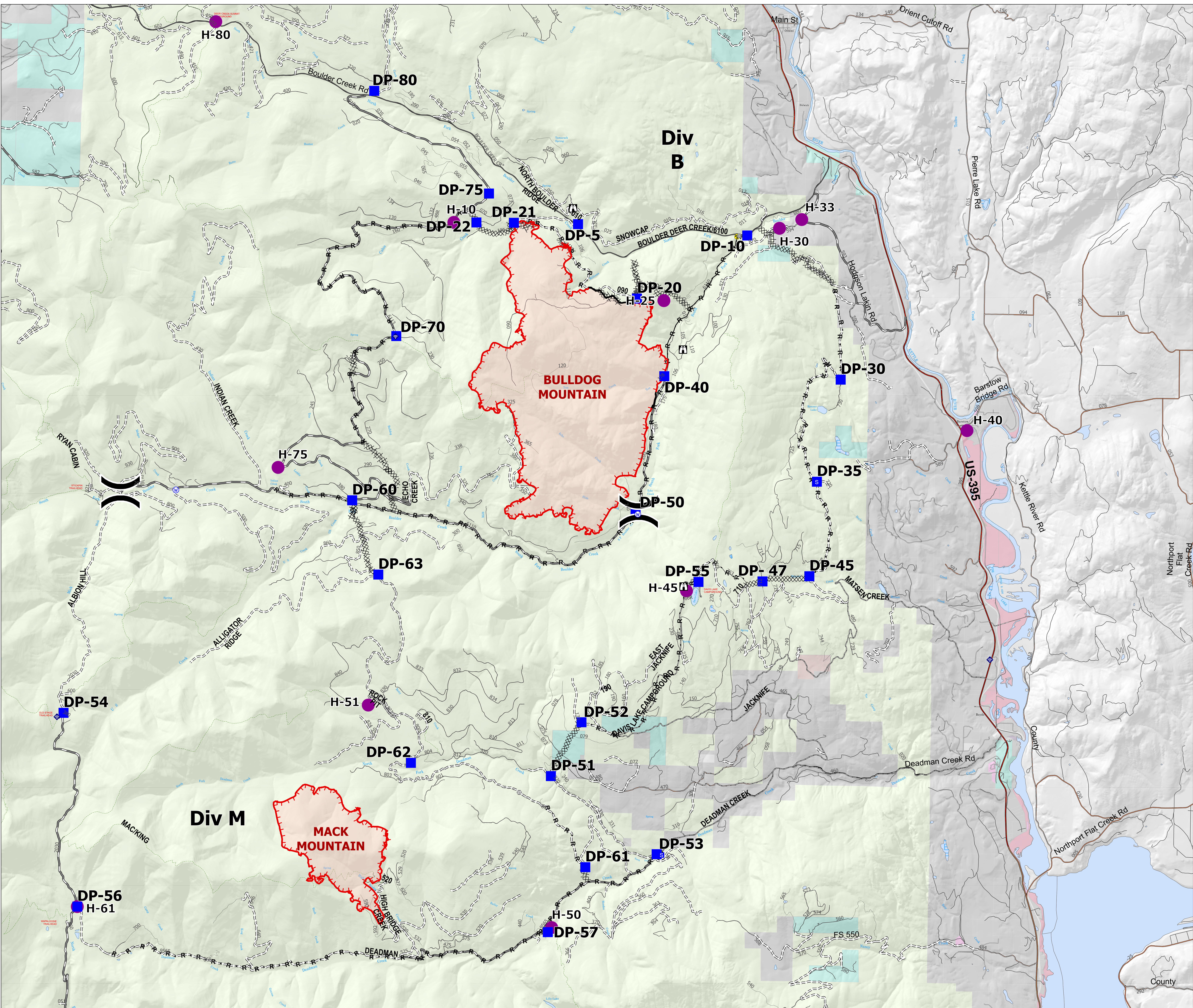
# Briefing Area Map

## Bulldog Mountain

### WACOF-2348



5,173 acres on 08/22/2021@2100  
 Mack Mountain Fire 1,233 ac. on 08/22/2021



- Helispot
- ✕ Division Break
- Drop Point
- S Staging Area
- Lookout
- ⊙ Gate
- ⊕ Bridge
- ◇ Internet Access
- ⚠ Hazard
- W Water Source
- XX Completed Dozer Line
- - - Completed Hand Line
- R Completed Road as Line
- - - Planned Road as Line
- Access or Improved Road
- Fence
- Fire Edge
- Contained Line
- FS/Topo Transportation Lines
- Interstate or US Highway
- Road - Light Duty - Dirt
- Road - Light Duty - Gravel
- Road - Light Duty - Paved
- Road - Light Duty - Unspecified Composition
- - - Road - Unimproved
- Trail
- State Lands - Roads by USGS Classification
- RD\_USGS\_CLASS\_CD
- Interstate or US Highway
- State Highway or Major Arterial Collector
- Arterial or Collector
- Local Road or City Street
- Unknown
- <all other values>
- Major freshwater
- Roads
- Oper\_Maint\_Level
- 1 - BASIC CUSTODIAL CARE (CLOSED)
- 2 - HIGH CLEARANCE VEHICLES
- 3 - SUITABLE FOR PASSENGER CARS
- 4 - MODERATE DEGREE OF USER COMFORT
- 5 - HIGH DEGREE OF USER COMFORT
- Parcel Ownership
- Private
- Ferry County
- Indian Allotment Trust Lands
- Open water and lakes
- US Bureau of Reclamation
- US Dept. of Interior
- US Forest Service
- United States of America
- WA DNR
- WA DOT
- WA Dept of Fish and Wildlife
- WA State

