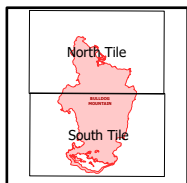


IAP Map

Bulldog Mountain
WACOF-2348
9/03/2021 Day

5,494 acres at 08/31/2021@2030



North Tile

- Helispot
- Drop Point
- 🏠 Lookout
- 📶 Internet Access
- Completed Burnout
- ⊗ Completed Dozer Line
- R Completed Road as Line
- Temporary Flight Restriction
- Fire Edge
- Contained Line
- Wildfire Daily Fire Perimeter
- Burn Scars
- Timber Sales
- FS Closed Roads
- Roads

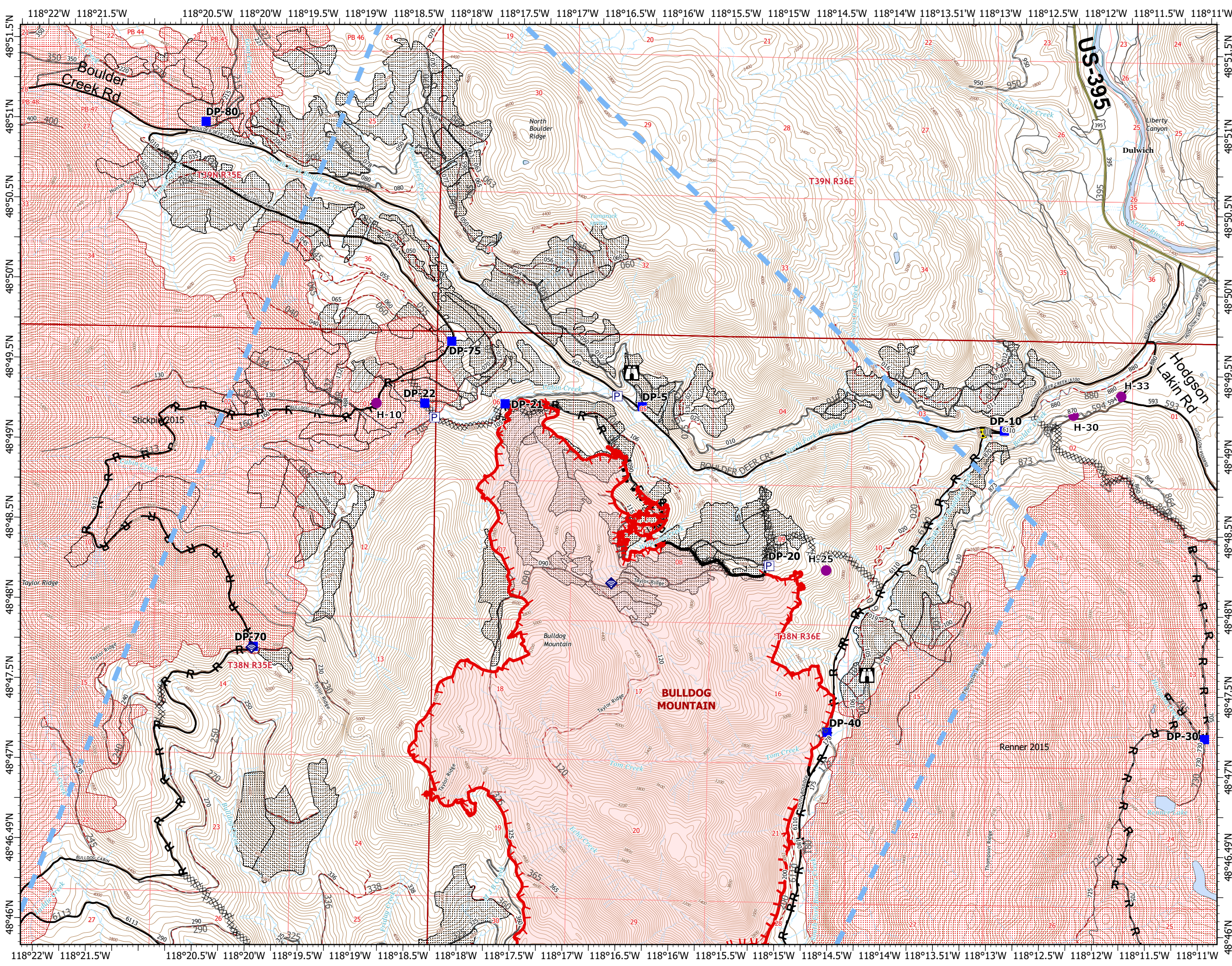
Roads

- Oper_Maint_Level
- 1 - BASIC CUSTODIAL CARE (CLOSED)
 - 2 - HIGH CLEARANCE VEHICLES
 - 3 - SUITABLE FOR PASSENGER CARS
 - 4 - MODERATE DEGREE OF USER COMFORT
 - 5 - HIGH DEGREE OF USER COMFORT
 - <Null>
 - NA - NOT APPLICABLE
 - <all other values>
 - Roadless Areas

0 0.25 0.5
Miles

Scale: 1:40,000

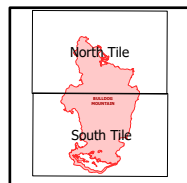
9/3/2021 1452
Acres from IR and GPS
North American 1983 Datum, LatLong Grid



IAP Map

Bulldog Mountain
WACOF-2348
9/03/2021 Day

5,494 acres at 08/31/2021@2030



South Tile

- () Division Break
- Drop Point
- ⊙ Water Source
- R Completed Road as Line
- ┆ Planned Burnout
- ▬ Temporary Flight Restriction
- ▬ Fire Edge
- ▬ Contained Line
- ▬ Wildfire Daily Fire Perimeter
- ▬ Timber Sales
- ▬ FS Closed Roads
- ▬ Roads

Roads

Oper_Maint_Level

- 1 - BASIC CUSTODIAL CARE (CLOSED)
- 2 - HIGH CLEARANCE VEHICLES
- 3 - SUITABLE FOR PASSENGER CARS
- 4 - MODERATE DEGREE OF USER COMFORT
- 5 - HIGH DEGREE OF USER COMFORT
- <Null>
- NA - NOT APPLICABLE
- <all other values>
- ▬ Roadless Areas

0 0.25 0.5
Miles

Scale: 1:40,000

9/3/2021 1453
Acres from IR and GPS
North American 1983 Datum, LatLong Grid

