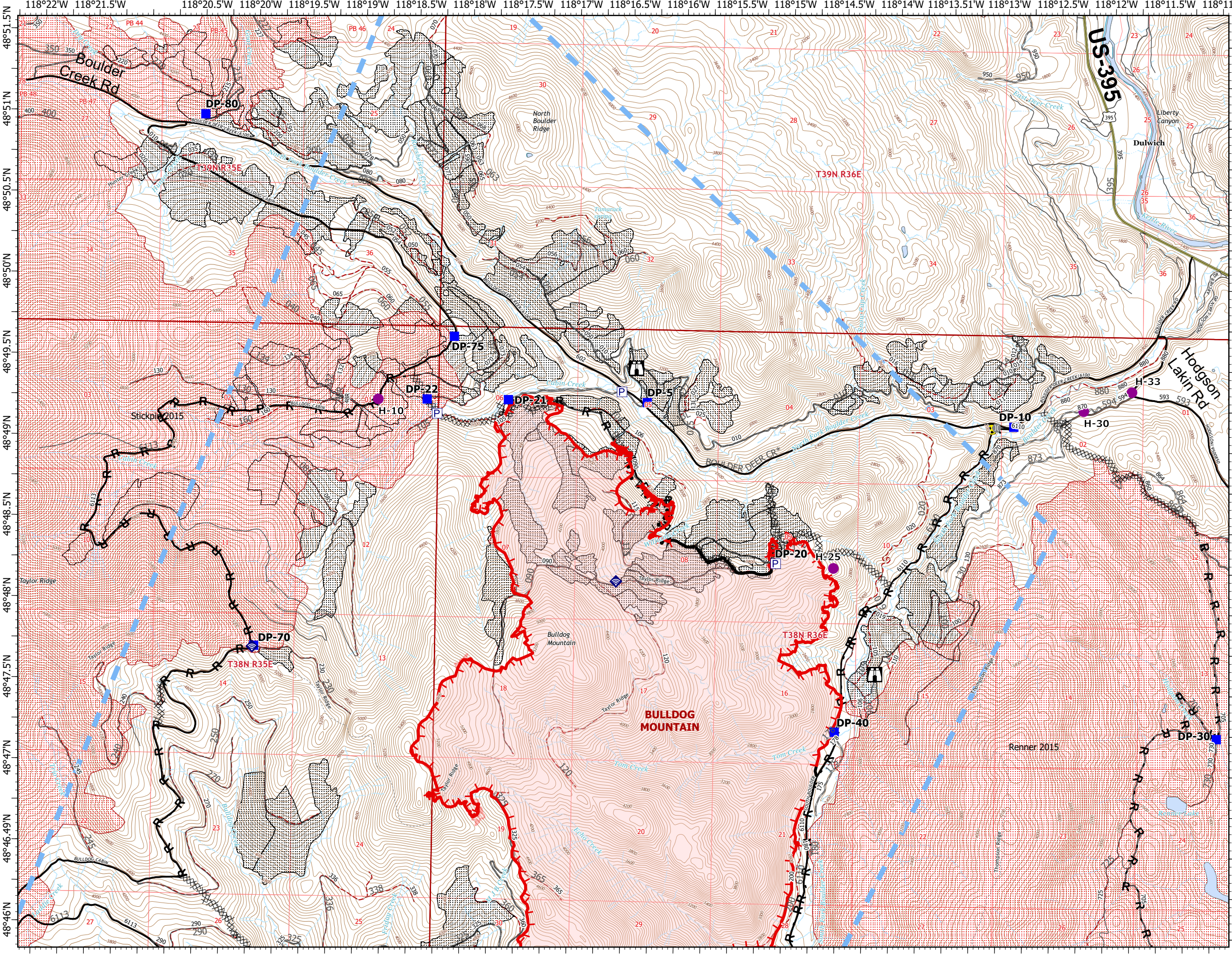


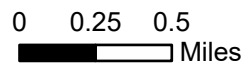
IAP Map

Bulldog Mountain WACOF-2348 9/05/2021 Day

5,878 acres at 09/05/2021



- Helispot
 - Drop Point
 - Lookout
 - ◆ Internet Access
 - Completed Burnout
 - Completed Dozer Line
 - Completed Road as Line
 - Temporary Flight Restriction
 - Fire Edge
 - Contained Line
 - Wildfire Daily Fire Perimeter
 - Burn Scars
 - Timber Sales
 - FS Closed Roads
 - Roads
- Roads**
- Oper_Maint_Level**
- 1 - BASIC CUSTODIAL CARE (CLOSED)
 - 2 - HIGH CLEARANCE VEHICLES
 - 3 - SUITABLE FOR PASSENGER CARS
 - 4 - MODERATE DEGREE OF USER COMFORT
 - 5 - HIGH DEGREE OF USER COMFORT
 - <Null>
 - NA - NOT APPLICABLE
 - <all other values>
 - Roadless Areas



Scale: 1:40,000

N
WSZ
9/5/2021 1518
Acres from IR and GPS
North American 1983 Datum, LatLong Grid

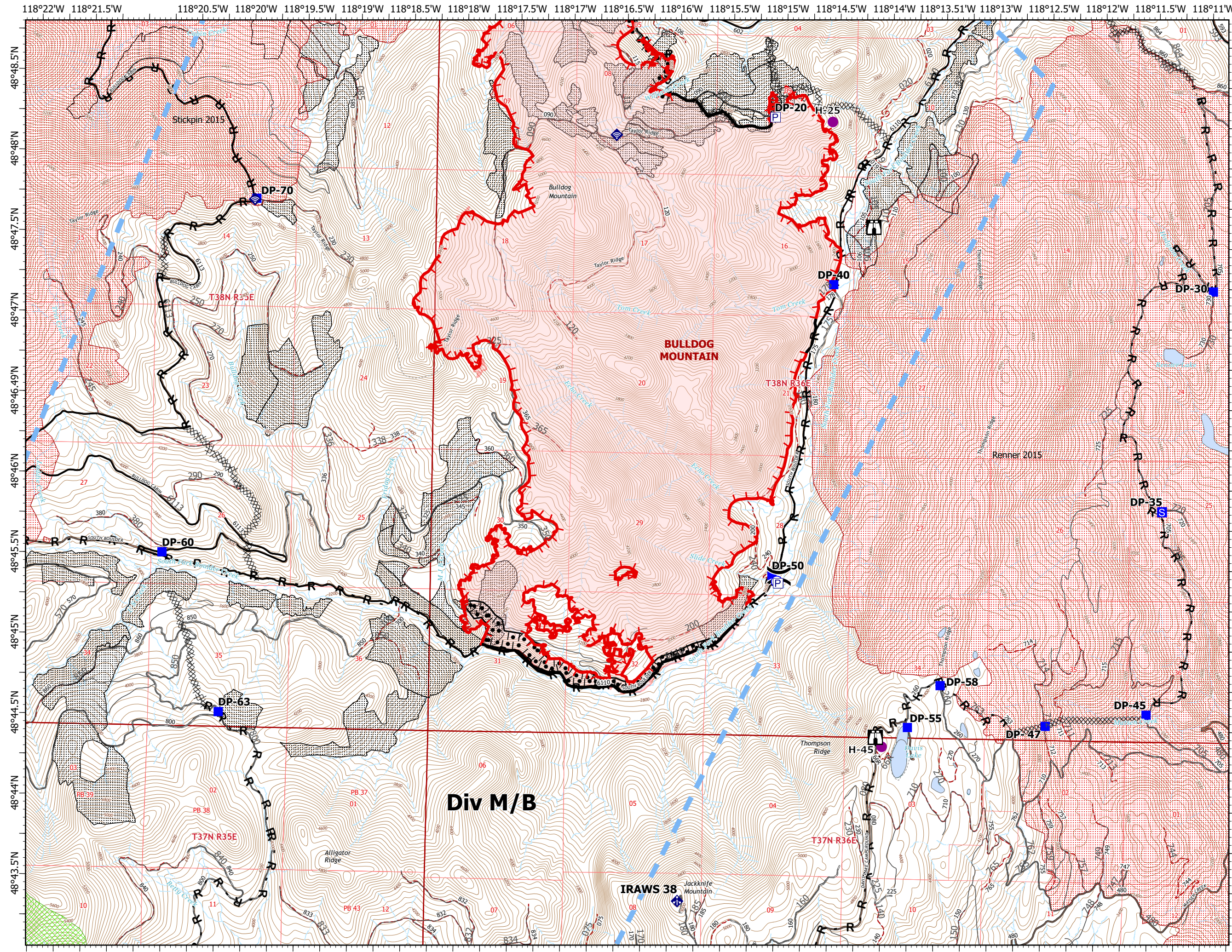
IAP Map

Bulldog Mountain

WACOF-2348

9/05/2021 Day

5,878 acres at 09/05/2021



- () Division Break
 - Drop Point
 - ⊙ Water Source
 - ⊥ Completed Burnout
 - R Completed Road as Line
 - ▬ Temporary Flight Restriction
 - ▬ Fire Edge
 - ▬ Contained Line
 - ▬ Wildfire Daily Fire Perimeter
 - ▬ Timber Sales
 - ▬ FS Closed Roads
 - ▬ Roads
- Roads**
- Oper_Maint_Level**
- 1 - BASIC CUSTODIAL CARE (CLOSED)
 - 2 - HIGH CLEARANCE VEHICLES
 - 3 - SUITABLE FOR PASSENGER CARS
 - 4 - MODERATE DEGREE OF USER COMFORT
 - 5 - HIGH DEGREE OF USER COMFORT
 - <Null>
 - NA - NOT APPLICABLE
 - <all other values>
- ▬ Roadless Areas

0 0.25 0.5
Miles

Scale: 1:40,000

WSZ
9/5/2021 1518
Acres from IR and GPS
North American 1983 Datum, LatLong Grid