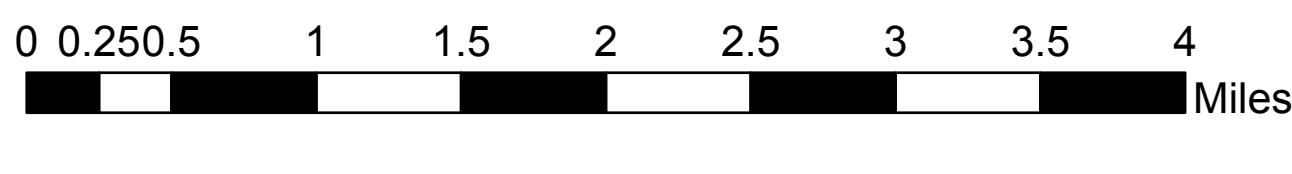
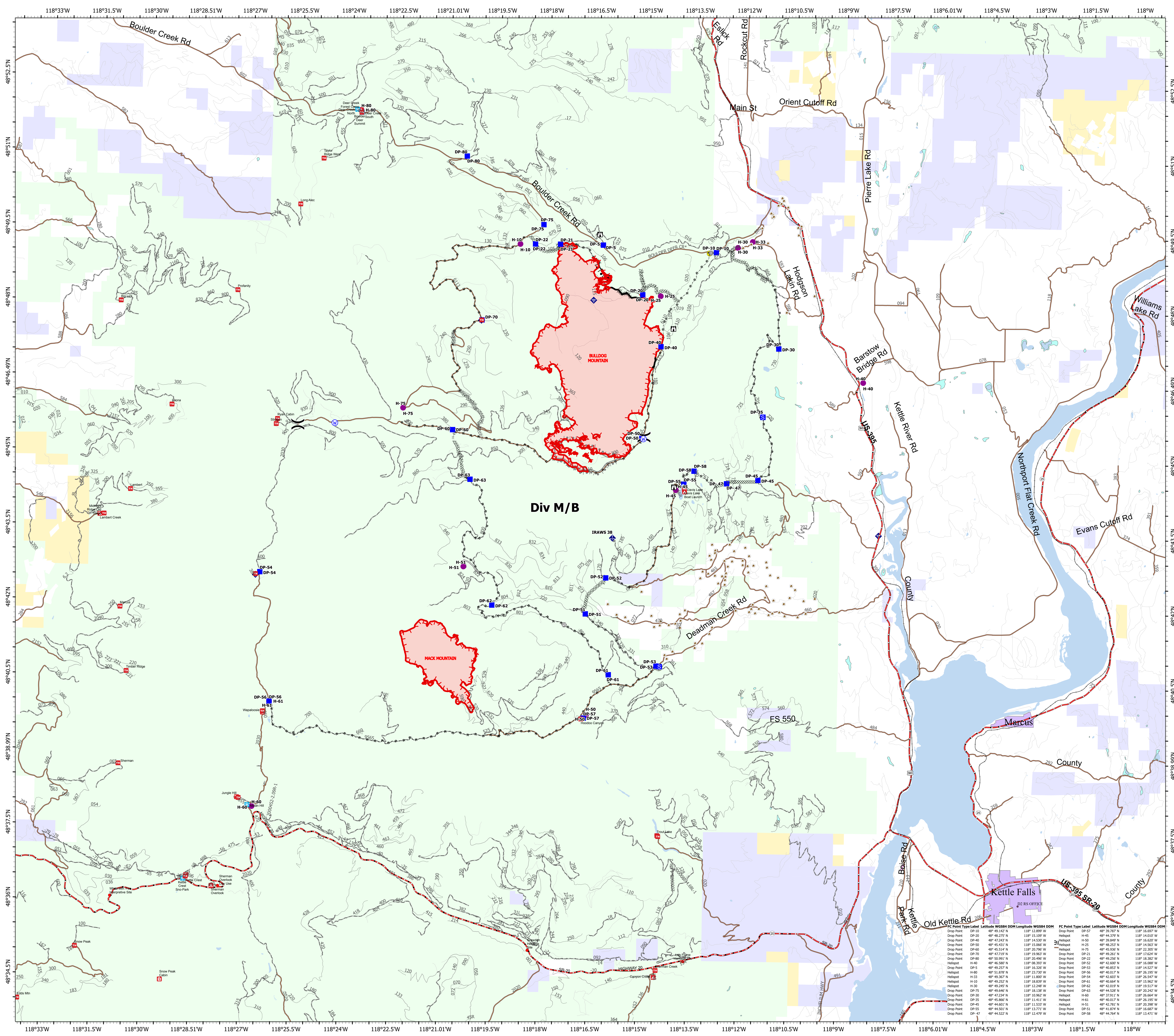


Transportation
 Bulldog Mountain
 WACOF-2348
 9/01/2021 day
 5,494 acres at 08/31/2021@2030

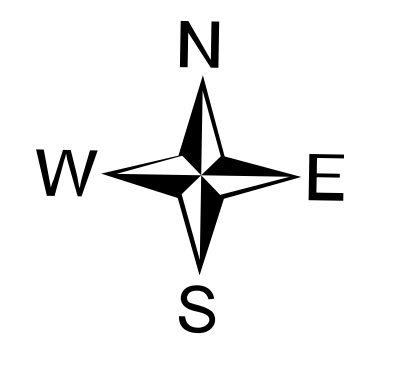
Mack Mountain
 WACOF-2338
 9/01/2021
 1,235 acres as of 8/29/2021 @2100



- railways_dot
- highways_dot
- Label Point
- Helispot
- ⎓ Division Break
- Drop Point
- Staging Area
- ⊠ Lookout
- ⊠ Gate
- ⊠ Bridge
- ⊠ Mobile Weather Unit
- ⊠ Internet Access
- ⊠ Hazard
- ⊠ Water Source
- ⊠ Completed Burnout
- ⊠ Completed Dozer Line
- ⊠ Completed Hand Line
- ⊠ Completed Road as Line
- ⊠ Planned Burnout
- ⊠ Planned Dozer Line
- ⊠ Planned Hand Line
- ⊠ Planned Road as Line
- ⊠ Access or Improved Road
- ⊠ Fence
- ⊠ Fire Edge
- ⊠ Contained Line
- ⊠ Wildfire Daily Fire Perimeter
- ⊠ LakePond
- ⊠ Reservoir
- ⊠ SwampMarsh
- 1 - BASIC CUSTODIAL CARE (CLOSED)
- 2 - HIGH CLEARANCE VEHICLES
- 3 - SUITABLE FOR PASSENGER CARS
- 4 - MODERATE DEGREE OF USER COMFORT
- 5 - HIGH DEGREE OF USER COMFORT
- ⊠ StateBoundary
- ⊠ FSOffices
- ⊠ City Limit
- ⊠ Boating Site
- ⊠ Campground
- ⊠ Horse Camp
- ⊠ Lookout/Cabin
- ⊠ Snowpark
- ⊠ Trailhead
- ⊠ Other
- ⊠ U.S. Forest Service
- ⊠ Bureau of Land Management
- ⊠ State Land
- ⊠ Other Land, Including Private
- ⊠ Structure_protection_plan
- Helispot
- Drop Point



FC Point Type Label	Latitude WGS84 DDM	Longitude WGS84 DDM	FC Point Type Label	Latitude WGS84 DDM	Longitude WGS84 DDM
Drop Point DP-10	48° 49.142' N	118° 12.899' W	Drop Point DP-57	48° 49.787' N	118° 16.697' W
Drop Point DP-20	48° 48.275' N	118° 15.059' W	Helispot H-45	48° 44.299' N	118° 16.820' W
Drop Point DP-40	48° 47.243' N	118° 14.530' W	Helispot H-50	48° 39.849' N	118° 16.620' W
Drop Point DP-50	48° 45.431' N	118° 15.066' W	Helispot H-25	48° 48.213' N	118° 14.563' W
Drop Point DP-60	48° 45.544' N	118° 20.796' W	Helispot H-75	48° 45.261' N	118° 17.230' W
Drop Point DP-70	48° 47.719' N	118° 19.963' W	Drop Point DP-21	48° 49.261' N	118° 17.624' W
Drop Point DP-80	48° 48.991' N	118° 20.696' W	Drop Point DP-22	48° 49.266' N	118° 18.389' W
Helispot H-40	48° 46.588' N	118° 08.393' W	Drop Point DP-52	48° 42.600' N	118° 16.086' W
Drop Point DP-5	48° 49.257' N	118° 16.326' W	Drop Point DP-53	48° 40.823' N	118° 14.527' W
Helispot H-80	48° 51.826' N	118° 23.720' W	Drop Point DP-54	48° 42.623' N	118° 16.547' W
Helispot H-33	48° 49.367' N	118° 11.800' W	Drop Point DP-61	48° 40.644' N	118° 15.962' W
Helispot H-10	48° 49.252' N	118° 18.839' W	Drop Point DP-62	48° 42.018' N	118° 19.517' W
Helispot H-30	48° 49.245' N	118° 12.248' W	Drop Point DP-63	48° 44.518' N	118° 20.242' W
Drop Point DP-75	48° 49.686' N	118° 18.138' W	Helispot H-60	48° 40.017' N	118° 16.466' W
Drop Point DP-30	48° 47.244' N	118° 10.962' W	Helispot H-61	48° 40.017' N	118° 26.190' W
Drop Point DP-35	48° 45.866' N	118° 11.411' W	Helispot H-61	48° 42.261' N	118° 19.398' W
Drop Point DP-45	48° 44.601' N	118° 11.533' W	Drop Point DP-51	48° 41.874' N	118° 16.687' W
Drop Point DP-55	48° 44.501' N	118° 13.771' W	Drop Point DP-56	48° 44.764' N	118° 13.471' W
Drop Point DP-47	48° 44.522' N	118° 12.479' W			



jthomas
 9/1/2021 1008
 North American 1983 Datum. Lat/Long
 Grid