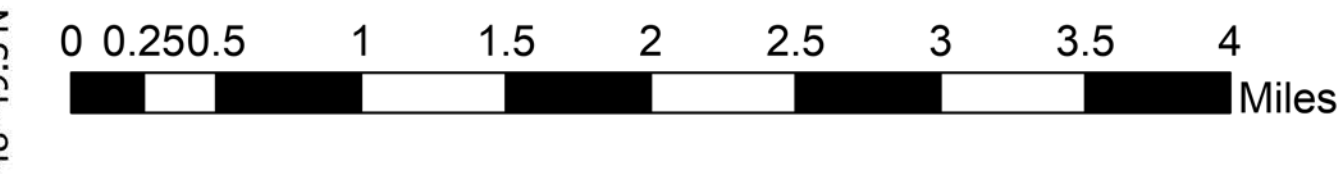
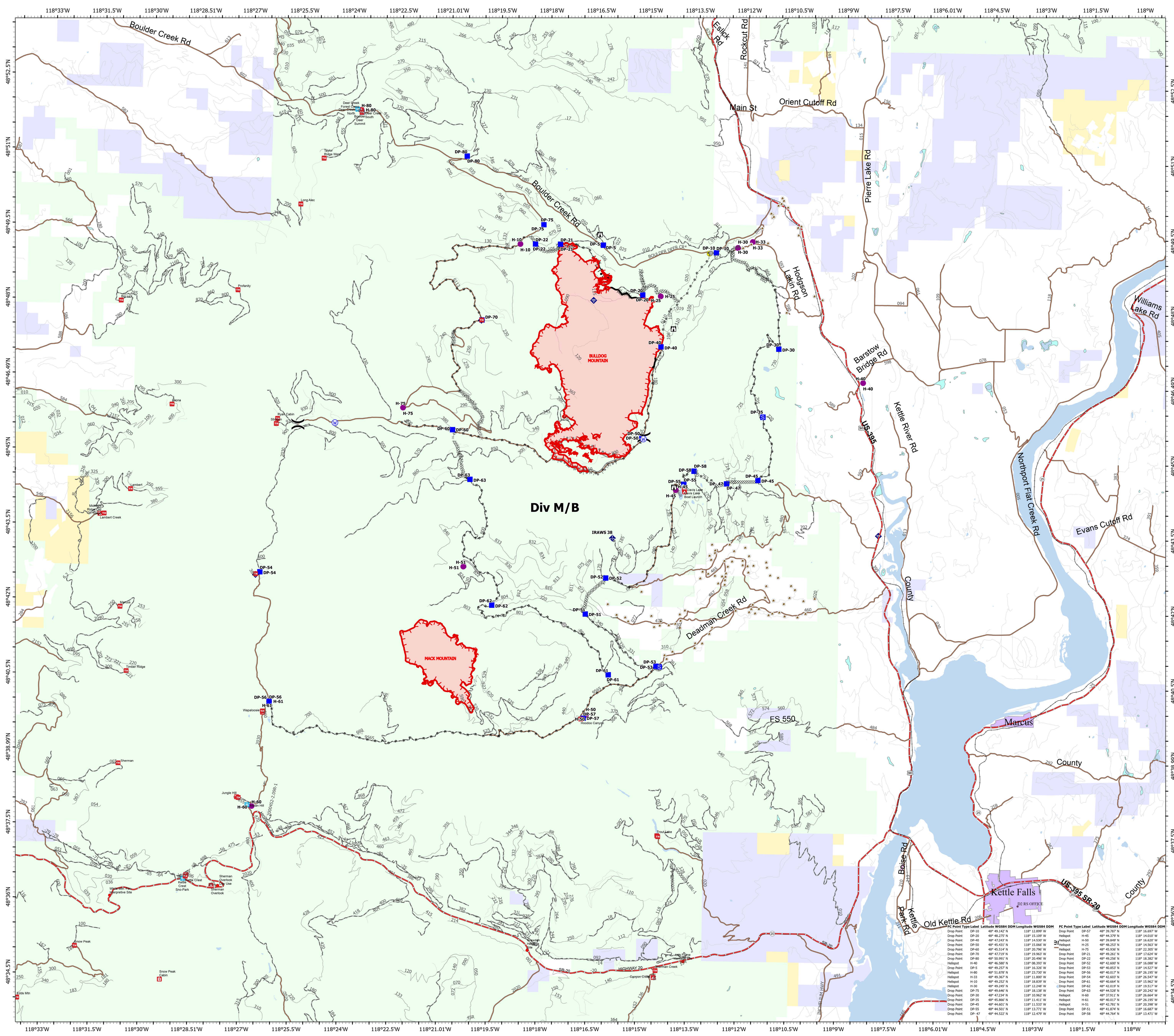


Transportation
 Bulldog Mountain
 WACOF-2348
 9/01/2021 day
 5,494 acres at 08/31/2021@2030

Mack Mountain
 WACOF-2338
 9/01/2021
 1,235 acres as of 8/29/2021 @2100



- railways_dot
- highways_dot
- Label Point
- HeliSpot
- ⏏ Division Break
- Drop Point
- ▭ Staging Area
- ⏏ Lookout
- ⊗ Gate
- ⊗ Bridge
- ⊗ Mobile Weather Unit
- ⊗ Internet Access
- ⊗ Hazard
- ⊗ Water Source
- ⊗ Completed Burnout
- ⊗ Completed Dozer Line
- ⊗ Completed Hand Line
- ⊗ Completed Road as Line
- ⊗ Planned Burnout
- ⊗ Planned Dozer Line
- ⊗ Planned Hand Line
- ⊗ Planned Road as Line
- ⊗ Access or Improved Road
- ⊗ Fence
- ⊗ Fire Edge
- ⊗ Contained Line
- ⊗ Wildfire Daily Fire Perimeter
- ⊗ LakePond
- ⊗ Reservoir
- ⊗ SwampMarsh
- ⊗ 1 - BASIC CUSTODIAL CARE (CLOSED)
- ⊗ 2 - HIGH CLEARANCE VEHICLES
- ⊗ 3 - SUITABLE FOR PASSENGER CARS
- ⊗ 4 - MODERATE DEGREE OF USER COMFORT
- ⊗ 5 - HIGH DEGREE OF USER COMFORT
- ⊗ StateBoundary
- ⊗ FSOffices
- ⊗ City Limit
- ⊗ Boating Site
- ⊗ Campground
- ⊗ Horse Camp
- ⊗ Lookout/Cabin
- ⊗ Snowpark
- ⊗ Trailhead
- ⊗ Other
- ⊗ U.S. Forest Service
- ⊗ Bureau of Land Management
- ⊗ State Land
- ⊗ Other Land, Including Private
- ⊗ Structure_protection_plan
- ⊗ HeliSpot
- ⊗ Drop Point



Drop Point	Type	Label	Latitude WGS84 DDM	Longitude WGS84 DDM	Drop Point	Type	Label	Latitude WGS84 DDM	Longitude WGS84 DDM
DP-10	Drop Point		48° 49.142' N	118° 12.899' W	DP-57	Drop Point		48° 49.787' N	118° 16.697' W
DP-20	Drop Point		48° 48.275' N	118° 15.109' W	H-45	HeliSpot		48° 44.279' N	118° 14.620' W
DP-40	Drop Point		48° 42.243' N	118° 14.530' W	H-90	HeliSpot		48° 39.849' N	118° 16.620' W
DP-50	Drop Point		48° 45.431' N	118° 15.066' W	H-25	HeliSpot		48° 48.213' N	118° 14.562' W
DP-60	Drop Point		48° 45.544' N	118° 20.796' W	H-75	HeliSpot		48° 45.290' N	118° 22.250' W
DP-70	Drop Point		48° 47.719' N	118° 19.963' W	DP-21	Drop Point		48° 49.261' N	118° 17.624' W
DP-80	Drop Point		48° 50.991' N	118° 20.696' W	DP-22	Drop Point		48° 49.266' N	118° 18.292' W
H-40	HeliSpot		48° 46.588' N	118° 08.393' W	DP-52	Drop Point		48° 42.600' N	118° 16.086' W
DP-5	Drop Point		48° 49.257' N	118° 16.326' W	DP-53	Drop Point		48° 40.823' N	118° 14.527' W
H-80	HeliSpot		48° 54.892' N	118° 22.720' W	DP-56	Drop Point		48° 40.077' N	118° 16.199' W
H-33	HeliSpot		48° 49.367' N	118° 11.800' W	DP-54	Drop Point		48° 42.603' N	118° 26.547' W
H-10	HeliSpot		48° 49.352' N	118° 18.839' W	DP-61	Drop Point		48° 40.664' N	118° 15.962' W
H-30	HeliSpot		48° 49.245' N	118° 12.248' W	DP-62	Drop Point		48° 42.618' N	118° 19.517' W
DP-75	Drop Point		48° 49.686' N	118° 18.130' W	DP-63	Drop Point		48° 44.528' N	118° 20.242' W
DP-30	Drop Point		48° 42.244' N	118° 10.962' W	H-60	HeliSpot		48° 37.611' N	118° 26.466' W
DP-45	Drop Point		48° 45.866' N	118° 11.411' W	H-61	HeliSpot		48° 40.017' N	118° 26.190' W
DP-45	Drop Point		48° 44.601' N	118° 11.533' W	H-51	HeliSpot		48° 42.266' N	118° 20.398' W
DP-55	Drop Point		48° 44.501' N	118° 13.771' W	DP-58	Drop Point		48° 41.874' N	118° 16.687' W
DP-47	Drop Point		48° 44.522' N	118° 12.479' W	DP-58	Drop Point		48° 44.764' N	118° 13.471' W

