

# Incident Action Plan

# Chuweah Creek Fire

July 14, 2021  
0600-1800 Operational Period



**WA-COA-200084**

N5RG [P]  
221 KSP



DOWNLOAD  
IAP



DOWNLOAD  
MAPS

This page intentionally left blank.



## INCIDENT OBJECTIVES (ICS 202)

<b>1. Incident Name:</b>	<b>2. Operational Period: 0600-1800</b>	
CHUWEAH CREEK FIRE	Date/Time From: 07/14/2021 0600      WED	Date/Time To: 07/14/2021 1800      WED
<b>3. Objective(s):</b>		
<p>Implement risk management practices that provide for the safety of firefighters, other responders and the public as the first priority.</p> <p>Minimize impacts to timber, cultural resources and natural resources including water, fish, wildlife, and range land..</p> <p>Maintain or improve positive landowner and community relationships.</p> <p>Establish and maintain all current COVID-19 mitigation protocols.</p>		
<b>4. Operational Period Command Emphasis:</b>		
Maintain situational awareness and use extra vigilance as fire conditions may change with the Red Flag warning over the fire area.		
<b>General Situational Awareness:</b>		
<b>5. Site Safety Plan Required?</b> Yes <input type="checkbox"/> No <input checked="" type="checkbox"/>		
<b>Approved Site Safety Plan(s) Located</b>		
<b>6. Incident Action Plan</b> (the items checked below are included in this Incident Action Plan):		
<input checked="" type="checkbox"/> ICS 202 <input checked="" type="checkbox"/> ICS 203 <input checked="" type="checkbox"/> ICS 204 <input checked="" type="checkbox"/> ICS 205 <input type="checkbox"/> ICS 205A <input checked="" type="checkbox"/> ICS 206	<input type="checkbox"/> ICS 207 <input type="checkbox"/> ICS 208 <input checked="" type="checkbox"/> ICS 220 <input checked="" type="checkbox"/> Map/Chart <input checked="" type="checkbox"/> Weather Forecast/Tides/Currents	<b>Other Attachments:</b> <input checked="" type="checkbox"/> HR MESSAGE <input type="checkbox"/> _____ <input type="checkbox"/> _____ <input type="checkbox"/> _____
<b>7. Prepared by:</b> HOWARD JOHNSON      Position/Title:      PSC2	Signature:	
<b>8. Approved by Incident Commander:</b>	Name:      BOB SHINDELAR	Signature:
<b>ICS 202</b>	<b>IAP Page</b>	Date/Time:      07/13/2021 2300

## ORGANIZATION ASSIGNMENT LIST (ICS 203)

<b>1. Incident Name:</b>		<b>2. Operational Period:</b> 0600-1800	
CHUWEAH CREEK FIRE		Date/Time From: 07/14/2021 0600 WED	Date/Time To: 07/14/2021 1800 WED
<b>3. Incident Commander(s) and Command Staff:</b>		CHIEF	
IC/UC	BOB SHINDELAR	STAGING AREA	
DEPUTY			
SAFETY OFFICER	KEITH WAKEFIELD	DIVISION/GROUP	A/D MATT KENNEDY
	JACK CATES	DIVISION/GROUP	K BOB HINDS
INFORMATION OFFICER	MARY BEAN	DIVISION/GROUP	W/Z LARRY LEACH
	ROLAND EMETAZ		
LIAISON OFFICER	SCOTT CRAWFORD	<b>7b. Air Operations Branch:</b>	
HUMAN RESOURCE SPECIALIST	SUSIE MANEZES	AIR OPS BRANCH DIRECTOR	PAUL BALFOUR
<b>4. Agency/Organization Representatives:</b>		AIR ATTACK SUPERVISOR	
Agency/Organization	Name	AIR SUPPORT SUPERVISOR	
		HELICOPTER COORDINATOR	
<b>5. Planning Section:</b>		AIR TANKER COORDINATOR	
CHIEF	HOWARD JOHNSON	<b>8. Finance/Administration Section:</b>	
DEPUTY		CHIEF	CHERI FULLER CHRISTINA GOEBEL
RESOURCES UNIT		DEPUTY	
SITUATION UNIT		TIME UNIT	
DOCUMENTATION UNIT		PROCUREMENT UNIT	
DEMOBILIZATION UNIT		COMPENSATION UNIT	
FIRE BEHAVIOR ANALYST		COST UNIT	
HUMAN RESOURCE SPECIALIST			
TRAINING SPECIALIST			
GIS SPECIALIST			
TECHNOLOGY SUPPORT SPECIALIST			
INCIDENT METEOROLOGIST			
<b>6. Logistics Section:</b>			
CHIEF	DAN SOPTICH KEVIN HAUGHTON		
DEPUTY			
SUPPLY UNIT			
FACILITIES UNIT			
GROUND SUPPORT UNIT			
COMMUNICATIONS UNIT			
MEDICAL UNIT			
SECURITY UNIT			
FOOD UNIT			
<b>7. Operations Section:</b>			
OPS SECTION CHIEF	AARON ROWE		
PLANNING OPS	TONY ENGEL KURT RANTA (T)		
DEPUTY OPS SECTION			
<b>9. Prepared By:</b>	<b>Name:</b> JILL JOHNSON	<b>Position/Title:</b> RESL	<b>Signature:</b>
ICS 203	IAP Page	<b>Date/Time:</b> 07/13/2021 2330	

**Fire Weather Forecast**

**FORECAST NO:** 1  
**PREDICTION FOR:** Wednesday  
**Shift Date:** July 14, 2021  
**TIME AND DATE**  
**FORECAST ISSUED:** 7/13/2021 at 2000

**INCIDENT:** Chuweah Creek Fire  
**UNIT:** Colville Reservation  
**SIGNED:** Bob Tobin  
**Incident Meteorologist (IMET)**

-----  
**...A Red Flag Warning for Winds and Relative Wednesday and possibly Thursday...  
...Heat Advisory Wednesday and Thursday...**

**Weather Discussion:** Weak high pressure will be over the region on Wednesday then push off to the east of the fire area Thursday and Friday...meanwhile a trough of low pressure will form off the Pacific coast. This will put the Pacific NW in a southwest flow from Thursday through the weekend. Afternoon highs will cool down to more seasonal temperatures. But relative humidity will remain very dry. There will also be several days of breezy gusty winds.

**WEATHER FORECAST:**

**Today:**  
**SKY/WEATHER:** Sunny and very warm.  
**High Temperature...**93-97.  
**Min RH.....**8-12%  
**20-FOOT WINDS:** Southwest 8 to 10 mph in the morning. Becoming Southwest 12-14 mph with gusts 20-25 mph after 1300.  
**CWR (>=0.10")....** 0%    **LAL....**1    **Haines Index...3 (Very Low)**    **Mixing Height...10000 ft AGL**

**Tonight:**  
**Weather:** Clear and Warm.  
**Low Temperature...**59-63.  
**Max RH.....**40-45%  
**20-FOOT WINDS:** Southwest 8-10 mph after 2000 mph. Light and variable near sunrise.  
**CWR (>=0.10")....**0%    **LAL...1.**

**Thursday:**  
**SKY/WEATHER:** Sunny and not so warm.  
**High Temperature...**87-92.  
**Min RH.....**14-18%  
**20-FOOT WINDS:** Southwest winds 8-12 mph with gusts to 20 mph.  
**CWR (>=0.10")....**0%    **LAL....1**    **Haines Index...4 ( Low)**    **Mixing Height...8500 ft AGL**

**Extended Outlook**  
**Friday...** Sunny. Low: 55-60...High: 85-90. Min RH: 20-25% Winds: Southwest 8-12 mph with gusts to 20 mph.  
**Saturday...** Sunny. Low: 54-58...High: 80-85. Min RH: 20-25% Winds: South-southwest 7-10 mph.

# FIRE BEHAVIOR FORECAST

FORECAST NUMBER: 1	TYPE OF FIRE: Wildland
FIRE NAME: Chuweah Creek	OPERATIONAL PERIOD: July 14, 2021, Day Shift
DATE ISSUED: July 13, 2021	TIME ISSUED: 2300
UNIT: WA-COA	Don Strand FBAN

## INPUTS

### WEATHER SUMMARY: RED FLAG WARNING FOR WINDS AND LOW RELATIVE HUMIDITY

Very hot and dry with gusty afternoon SW winds gusting to 25 MPH. RH mins near 9% and max Temps near 100.

## OUTPUTS

### FIRE BEHAVIOR

**GENERAL:** Fuels – both live and dead – are extremely dry. Expect very active fire behavior today, especially in the afternoon with the stronger winds. Energy Release Component at Nespelem and Gold Mountain RAWS' are in the 97+ percentile. Fuel moistures are; 1 hour min. 2-3%, 10 hour min. 3-4%, 100 hour min 4-5%. 1000-hour fuel moistures are 6-7%. Fuels are mixed grass, brush, conifer with grass and brush understory with areas of light logging slash.

Probability of Ignition will approach 100% today. Maximum spotting distance approaching 0.8 mile or more with afternoon winds. Expect significant fire spread today. Single and group torching likely with potential for periodic runs in afternoon continuing into evening.

Potential Rates of Spread and Flame Lengths calculated using forecasted weather and NFDRS fuels data from Nespelem and Gold Mountain RAWS

	FM 2 Grass	FM 5 Brush	FM 9 Needle litter	FM 10 Heavy litter
Rate of Spread	250 Chain/Hr.	150 Chain/Hr.	50 Chain/Hr.	45 Chains/Hr.
Flame Length	16'	15'	7'	12'

**AIR OPERATIONS:** Watch for turbulence in the complex terrain.

## SAFETY

**Local Thresholds - Combinations of any of these factors can greatly increase fire behavior; 20' wind speed over 6 MPH, RH less than 16%, Temperatures over 89°.**

**Watch for increased fire activity with wind slope alignment.**

# Safety Message

14 July 2021

**INCIDENT: Chuweah Fire**

**OPERATIONAL PERIOD: 0600-1800**

## **TOPICS:**

### **TRANSITION**

NW Team 12 has assumed command of the fire as of 0600. Transition of Overhead and personnel will continue through the duration of the incident. Transition is a time that can be marred by extreme success or failure. Ensure positive relationship building and open lines of communications. Take a few extra minutes to get to know new personnel and provide a good briefing of actions taken up to the transition. Make sure you know who is working in your area and maintain accountability of your people.

### **HYDRATION/NUTRITION**

- \* Drink fluids throughout operational period (water and Gatorade) not energy drinks. Begin hydration well before your shift and continue after.
- \* Follow work / rest guidelines
- \* Set a reasonable work pace and allow adequate rest breaks
- \* Use buddy system to monitor personnel of heat related and fatigue issues
- \* For Heat Related Injuries refer to IRPG.
- \* Ensure adequate caloric intake.

### **INCIDENT COMMUNICATIONS**

Incident communications will be developing throughout the day. Avoid engagement if positive communications are not in place with Overhead or ICP. Check throughout the day for communication coverage as you change locations. Take a tactical pause if needed to fully allow incident transition to occur. Letting the transition develop allows for a solid and safe foundation to move forward in a lower risk environment.

**SAFETY OFFICER: Jack Cates, Keith Wakefield, Taija Corso (T), Don Waller (T), Josh Northrup, John Barnes**



**Division/Group Assignment List (ICS 204 WF)**  
**Controlled Unclassified Information//Basic**

<b>1. Incident Name:</b>			<b>3.</b>			
CHUWEAH CREEK FIRE			<b>Branch:</b>		<b>Division/Group</b>	
<b>2. Operational Period:</b> 0600-1800					<b>A/D</b>	
Date/Time From: 07/14/2021 0600 WED		Date/Time To: 07/14/2021 1800 WED				
<b>4. Operations Personnel</b>						
<b>DIVISION/GROUP SUPERVISOR</b>		MATT KENNEDY		<b>AIR ATTACK SUPERVISOR</b>		PAUL BALFOUR
<b>OPERATIONS CHIEF</b>		AARON ROWE; TONY ENGEL KURT RANTA (T)		<b>SAFETY OFFICER</b>		KEITH WAKEFIELD JACK CATES
<b>5. Resources Assigned this Period</b>						
Strike Team / Task Force / Resource Designator		LWD	Leader	Number Persons	Drop Off PT./Time	Pick Up PT./Time
O-1.67 SOF2			JOSH NORTHRUP	1		
E-9 ENG6 ENGINE						
E-20 ENG5 DNR HI 7103						
<b>6. Control Operations/Work Assignments:</b>						
<p>TASK: Keep fire south of Cache Creek Rd and west of Keller Butter Rd  PURPOSE: Minimize resources damage and threat to structures.  END STATE: Fire contained within defined road systems.</p>						
<b>7. Special Instructions:</b>						
Utilize direct line tactics where possible. Burn out indirect line as needed.						
<b>8. Division/Group Communication Summary</b>						
Function	Channel	RX Frequency N/W	RX Tone/NAC	TX Frequency N/W	TX Tone/NAC	Mode
COMMAND						
TACTICAL						
LOGISTICS						
AIR TO GROUND						
<b>9. Prepared By (Resource Unit Leader)</b>			<b>Approved By (Planning Section Chief)</b>		<b>Date</b>	<b>Time</b>
JILL JOHNSON			HOWARD JOHNSON		07/13/2021	2300



**Division/Group Assignment List (ICS 204 WF)**  
**Controlled Unclassified Information//Basic**

<b>1. Incident Name:</b>				<b>3.</b>		
CHUWEAH CREEK FIRE				<b>Branch:</b>	<b>Division/Group</b>  <b>K</b>	
<b>2. Operational Period:</b> 0600-1800						
Date/Time From: 07/14/2021 0600 WED		Date/Time To: 07/14/2021 1800 WED				
<b>4. Operations Personnel</b>						
<b>DIVISION/GROUP SUPERVISOR</b>		BOB HINDS		<b>AIR ATTACK SUPERVISOR</b>		PAUL BALFOUR
<b>OPERATIONS CHIEF</b>		AARON ROWE; TONY ENGEL KURT RANTA (T)		<b>SAFETY OFFICER</b>		KEITH WAKEFIELD JACK CATES
<b>5. Resources Assigned this Period</b>						
Strike Team / Task Force / Resource Designator		LWD	Leader	Number Persons	Drop Off PT./Time	Pick Up PT./Time
O-1.66 SOF2			JOHN BARNES	1		
E-24 DOZ3 DOZER						
<b>6. Control Operations/Work Assignments:</b>						
TASK: Keep fire west of Keller Butter Rd PURPOSE: Minimize timber resource damage. END STATE: Fire contained within defined road systems.						
<b>7. Special Instructions:</b>						
Utilize direct line tactics where possible. Burn out indirect line as needed.						
<b>8. Division/Group Communication Summary</b>						
Function	Channel	RX Frequency N/W	RX Tone/NAC	TX Frequency N/W	TX Tone/NAC	Mode
COMMAND						
TACTICAL						
LOGISTICS						
AIR TO GROUND						
<b>9. Prepared By (Resource Unit Leader)</b>			<b>Approved By (Planning Section Chief)</b>		<b>Date</b>	<b>Time</b>
JILL JOHNSON			HOWARD JOHNSON		07/14/2021	2300

## Division/Group Assignment List (ICS 204 WF)

Controlled Unclassified Information//Basic

<b>1. Incident Name:</b>				<b>3.</b>		
CHUWEAH CREEK FIRE				Branch:	Division/Group  <b>W/Z</b>	
<b>2. Operational Period:</b> 0600-1800						
Date/Time From: 07/14/2021 0600      WED		Date/Time To: 07/14/2021 1800      WED				
<b>4. Operations Personnel</b>						
<b>DIVISION/GROUP SUPERVISOR</b>		LARRY LEACH		<b>AIR ATTACK SUPERVISOR</b>		PAUL BALFOUR
<b>OPERATIONS CHIEF</b>		AARON ROWE; TONY ENGEL KURT RANTA (T)		<b>SAFETY OFFICER</b>		KEITH WAKEFIELD JACK CATES
<b>5. Resources Assigned this Period</b>						
Strike Team / Task Force / Resource Designator		LWD	Leader	Number Persons	Drop Off PT./Time	Pick Up PT./Time
O-1.55 SOF2 WALLER, DONALD DEWAYNE				1		
E-6 ENG5 DNR SO 7202						
E-11 ENG6 ENGINE						
<b>6. Control Operations/Work Assignments:</b>						
TASK: Keep fire east and north of Buffalo Lake Rd and west of Keller Butte Rd. PURPOSE: Minimize resource damage and threat to structures. END STATE: Fire contained within defined road systems.						
<b>7. Special Instructions:</b>						
Utilize direct line tactics where possible. Burn out indirect line as needed.						
<b>8. Division/Group Communication Summary</b>						
Function	Channel	RX Frequency N/W	RX Tone/NAC	TX Frequency N/W	TX Tone/NAC	Mode
COMMAND						
TACTICAL						
LOGISTICS						
AIR TO GROUND						
<b>9. Prepared By (Resource Unit Leader)</b>			<b>Approved By (Planning Section Chief)</b>		<b>Date</b>	<b>Time</b>
JILL JOHNSON			HOWARD JOHNSON		07/14/2021	2300

AIR OPERATIONS SUMMARY

PREPARED BY: Paul Balfour

PREPARED DATE/TIME: July 13, 2130 hrs

<b>INCIDENT NAME</b> CHUWEAH CR	<b>2. OPERATIONAL PERIOD:</b> Date: 7/14/2021      Helibase Start Time: 0830 End Time: 2000      Sunrise: 0513 Sunset: 2050 (Times valid for Nespelem)
------------------------------------	--

<b>3. REMARKS (Safety Notes, Hazards, Air Operations Special Equipment, etc.):</b> General Aviation, See & Avoid  Bucket work, Retardant drops: ensure area is clear of ground personnel before dropping; watch for wires; be aware of potential for turbulence at ridge tops, saddles, canyons, etc *** BE AWARE OF FATIGUE, TAKE LONGER BREAKS WHEN FLYING IN SMOKEY CONDITIONS. *** Report all TFR intrusions to Air Operations, Air Support or Helibase as soon as possible.	<b>4. MEDEVAC A/C:</b> Contact Mt Tolman Fire Center for closes availability 509-634-3100	<b>5. TFR #1/8801 (A20)</b> 132.175
---	---	--

6. PERSONNEL	LWD	Phone	7. FREQUENCIES	AM	FM	8. FIXED-WING	# Avail / Type/ Make-Model / FAA N# / Base(s)
AOBD: Paul Balfour O-1.36		509-993-8739	AIR/AIR Primary (A-6)	118.4000		Lead Planes, Air Tankers, & SEATs	Order as needed through ATGS/AOBD or Mt Tolman Dispatch
ASGS: Tim Lyda O-		541-761-2676	AIR/AIR Secondary (A-7)	12402500			
HEBM:			AIR/GROUND Primary (A-4)		171.6750	ATGS Aircraft	AA Michelle Moore 208-608-6638 690 Commander, Lend/Lease/IA  LATs Order through Air Attack/AOBD Mt Tolman Dispatch
HEMG:			AIR/GROUND Secondary (A-5)		171.7500		
ATGS: Michelle Moore		208-608-6638	DNR-AIR/GROUND IA		159.270 T-103.5		
ATGS:			AIR/Ground Ch 57 IA		168.3125		
Mt Tolman: Deb Coudell		509-571-4133	UNICOM			NOTES:	
			DECK				

9. HELICOPTERS

FAA N#	TY	MAKE/MODEL	BASE	START	AVAIL	REMARKS	FAA N#	TY	MAKE/MODEL	BASE	START	AVAIL	REMARKS
							NOCB	1	K MAX	OMAK	0830	0900	Bucket

INCIDENT RADIO COMMUNICATIONS PLAN (ICS 205)  
Controlled Unclassified information/Basic

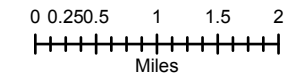
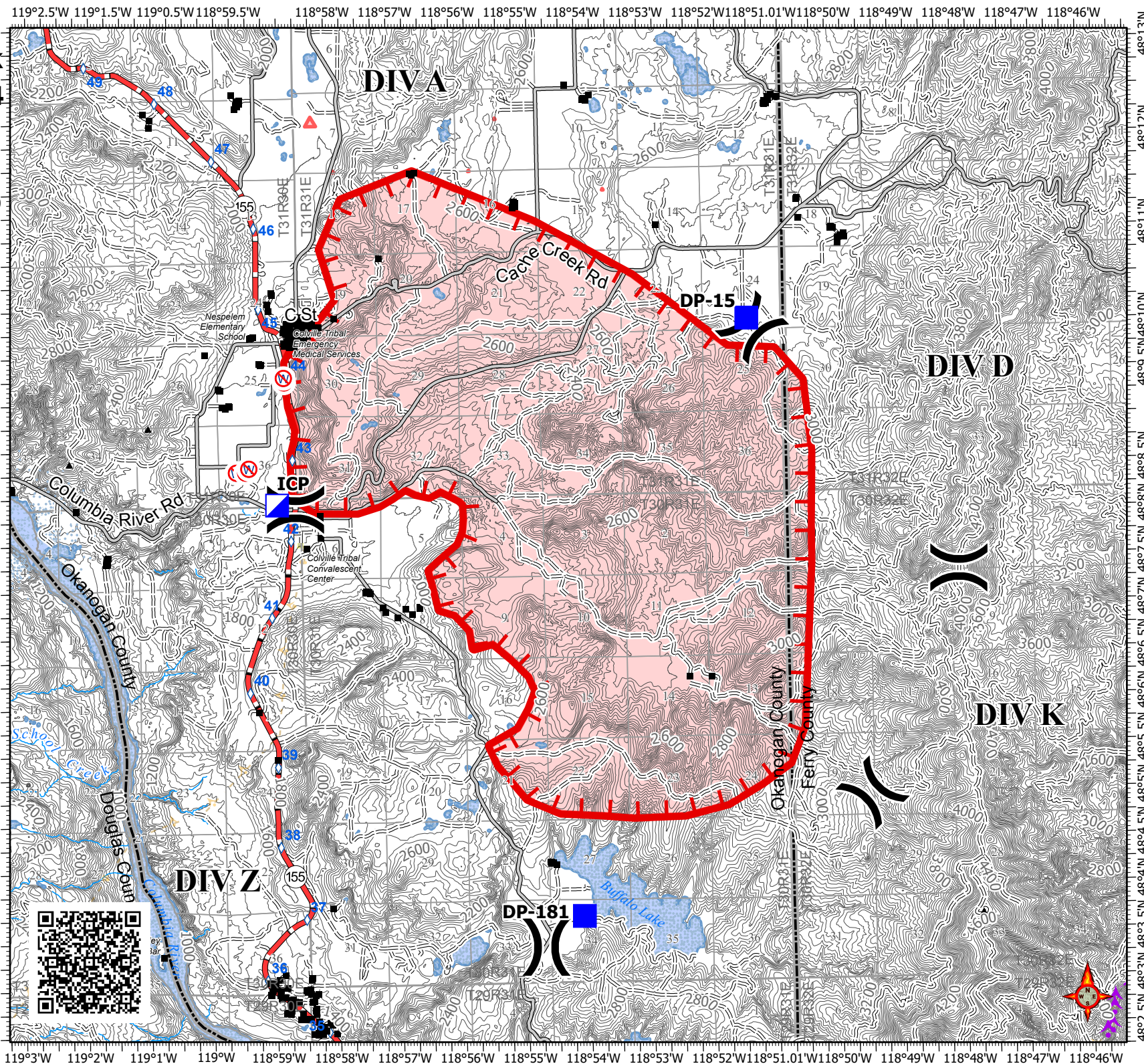
<b>1. Incident Name:</b>			<b>2. Date/Time Prepared:</b>				<b>3. Operational Period: DAY / NIGHT</b>			
CHUWEAH CREEK			Date: 7/13/21 Time: 2200				Date/Time From: WED 7/14/21 0600		Date/Time To: THU 7/15/21 0600	
<b>4. Basic Radio Channel Use:</b>										
Zone Group	Ch #	Function	Channel Name/Trunked Radio System Talkgroup	Assignment	RX Freq	RX Tone/NAC	TX Freq	TX Tone/NAC	Mode (A,D, or M)	Remarks
	1	COMMAND	FIRE B KELLER		164.1625	123.0	169.7125	136.5	A	
	2	COMMAND	FIRE B MOSES		164.1625	100.0	169.7125	136.5	A	
	3								A	
	4								A	
	5								A	
	6	TACTICAL	FIRE B CAR-CAR		169.7125	136.5	169.7125	136.5	A	
	7	TACTICAL	FIRE A CAR-CAR		169.7250	88.5	169.7250	88.5	A	
	8	AIR OPS	A/G 51		168.3125		168.3125		A	IA ONLY
	9								A	
	10								A	
	11								A	
	12								A	
	13								A	
	14	AIR OPS	A/G PRI		171.6750		171.6750		A	AIR TO GROUND PRIMARY
	15	AIR OPS	A/G SEC		171.7500		171.7500		A	AIR TO GROUND SECONDARY
	16	AIR GUARD	AIRGUARD	AIRGUARD	168.6250		168.6250	110.9	A	EMERGENCY AIR ONLY
<b>5. Special Instructions:</b>										
<b>6. Prepared By</b> (Communications Unit Leader)				Name: MISSY PARKER				Signature:		
ICS 205				IAP Page				Date/Time:		



# Chuweah Creek WA-COA-200084 IAP Map

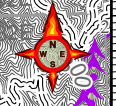
07/14/2021 Day Shift  
21,200 acres at 07/13/2021 @ 2200

- Division Break
- Incident Command Post
- Drop Point
- Structures
- No Dip Site
- Milepost Markers (DOT)
- Fire Edge
- Highway
- Primary Road
- Light-Duty Road
- Unimproved Road
- BPA Transmission Lines
- Utility Line
- Substation
- Fire Area
- Tribal Government



S. Bushnell  
07 13 21  
2313 Hours

Acres from hand sketch  
Datum: North American 1983 HARN







## **EMERGENCY PLAN**

### **INCIDENT WITHIN AN INCIDENT**

#### **ON SCENE SUPERVISOR**

**In the event of an accident or medical incident of any size, your primary responsibility is to ENSURE that the victim(s) receive prompt and effective Triage, Treatment and Transportation.**

- Conduct size-up of the incident (nature of accident, number type of resources involved, latitude and longitude location): notify incident communications center and supervisor, request assistance as needed.
- Order and coordinate medical and support response to the accident.
- Evaluate special needs (law enforcement, haz mat, etc.).
- Clear the command frequency if medical emergency; coordinate with incident communications and air attack for air medical transportation needs
- Preserve and photograph the scene for accident investigation.
- Remain aware of surroundings and the status of the main incident (delegate personnel to monitor the main fire) to ensure safety of medical treatment personnel.
- Until relieved, supervise and manage all personnel involved at the incident scene.
- **ENSURE THE MEDICAL INCIDENT REPORT IN THE INCIDENT ACTION PLAN IS BEING USED AND FOLLOWED.**



# MEDICAL PLAN (ICS 206 WF)

<b>1. Incident/Project Name</b>		<b>2. Operational Period</b>				
Chuweah Creek Fire		Date/Time 7/14/2021 0600-1800				
<b>3. Ambulance Services</b>						
<b>Name</b>	<b>Complete Address</b>	<b>Phone</b>		<b>Advanced Life Support (ALS)</b> Yes No		
Colville Tribal EMS Nespelem, WA	410 10 <sup>th</sup> St. Nespelem, WA 99155	Dispatch 509-978-9323		x		
Lifeline Ambulance	912 Koala Ave Omak, WA 98841	Dispatch 509-663-8091		x		
<b>4. Air Ambulance Services</b>						
<b>Name</b>	<b>Phone</b>	<b>Type of Aircraft &amp; Capability</b>				
Airlift Northwest	800-426-2430 or 911	Rotor in Wenatchee				
Life Flight Network	800-232-0911	2 Rotors, 1 Fixed Wing, Spokane				
<b>5. Hospitals</b>						
<b>Name</b> <b>Complete Address</b>	<b>GPS Datum – WGS 84</b> <b>Coordinate Standard</b> <b>Degrees Decimal Minutes</b> <b>DD° MM.MMM' N - Lat</b> <b>DD° MM.MMM' W - Long</b>	<b>Travel Time</b> <b>From ICP</b> Air Gnd		<b>Phone</b>	<b>Helipad</b> Yes No	<b>Level</b> <b>of Care</b> <b>Facility</b>
Mid-Valley Hospital 912 Koala Ave Omak, WA 98841	Lat: 48°23.8336'N	40 Min	1 Hr 14min	509-826-1760	x	Level 4 Trauma
	Long: 119°32.8758					
	VHF:					
Confluence Health Hospital (Central Washington Hospital) 1201 S Miller St. Wenatchee, WA 98801	Lat: 47°24.4340'N	1 Hr 10 Min	2Hr 30 Min	509-662-1511	x	Level 2 Trauma
	Long: 120°19.3664'W					
	VHF:					
Coulee Medical Center 411 Fortuyn Rd Grand Coulee, WA 99133	Lat: 44°56.5186'N	20 Min	40 Min	509-633-1753	x	Level 4 Trauma
	Long: 119°0.4333'W					
	VHF :					
Harborview Medical 325 9 <sup>th</sup> Ave Seattle, WA 98104	Lat: 47°36.1897'N	2 Hr	4 Hr	541-222-6929	x	Level 1 Trauma Burn Center
	Long: 122°19.4759'W					
	VHF:					
<b>6. Division  </b> <b>Branch   Group</b>	<b>Capability</b>	<b>Personnel</b>				
<b>Div A</b>		Ambo 1 Lifeline (E-17)				
<b>Div Z</b>		EMT 2 (E-19) Brattner				
<b>Night Shift</b>		(E-18) Landrum EMT 1				
<b>7. Prepared By (Medical Unit Leader)</b>		<b>8. Date/Time</b>	<b>9. Reviewed By (Safety Officer)</b>		<b>10. Date/Time</b>	
Diana Braun, Lee Venning		7/13/2021 2200	Jack Cates		7-13-2021	

# MEDICAL PLAN (ICS 206 WF)

Controlled Unclassified Information//Basic

## Medical Incident Report

**FOR A NON-EMERGENCY INCIDENT, WORK THROUGH CHAIN OF COMMAND TO REPORT AND TRANSPORT INJURED PERSONNEL AS NECESSARY.**

**FOR A MEDICAL EMERGENCY: IDENTIFY ON SCENE INCIDENT COMMANDER BY NAME AND POSITION AND ANNOUNCE "MEDICAL EMERGENCY" TO INITIATE RESPONSE FROM IMT COMMUNICATIONS/DISPATCH.**

Use the following items to communicate situation to communications/dispatch.

**1. CONTACT COMMUNICATIONS / DISPATCH (Verify correct frequency prior to starting report)**

*Ex: "Communications, Div. Alpha. Stand-by for Emergency Traffic."*

**2. INCIDENT STATUS: Provide incident summary (including number of patients) and command structure.**

*Ex: "Communications, I have a Red priority patient, unconscious, struck by a falling tree. Requesting air ambulance to Forest Road 1 at (Lat./Long.) This will be the Trout Meadow Medical, IC is TFLD Jones. EMT Smith is providing medical care."*

Severity of Emergency / Transport Priority	<input type="checkbox"/> RED / PRIORITY 1 Life or limb threatening injury or illness. Evacuation need is IMMEDIATE <i>Ex: Unconscious, difficulty breathing, bleeding severely, 2° – 3° burns more than 4 palm sizes, heat stroke, disoriented.</i> <input type="checkbox"/> YELLOW / PRIORITY 2 Serious Injury or illness. Evacuation may be DELAYED if necessary. <i>Ex: Significant trauma, unable to walk, 2° – 3° burns not more than 1-3 palm sizes.</i> <input type="checkbox"/> GREEN / PRIORITY 3 Minor Injury or illness. Non-Emergency transport <i>Ex: Sprains, strains, minor heat-related illness.</i>	
Nature of Injury or Illness & Mechanism of Injury		<i>Brief Summary of Injury or Illness (Ex: Unconscious, Struck by Falling Tree)</i>
Transport Request		<i>Air Ambulance / Short Haul/Hoist Ground Ambulance / Other</i>
Patient Location		<i>Descriptive Location &amp; Lat. / Long. (WGS84)</i>
Incident Name		<i>Geographic Name + "Medical" (Ex: Trout Meadow Medical)</i>
On-Scene Incident Commander		<i>Name of on-scene IC of Incident within an Incident (Ex: TFLD Jones)</i>
Patient Care		<i>Name of Care Provider (Ex: EMT Smith)</i>

**3. INITIAL PATIENT ASSESSMENT: Complete this section for each patient as applicable (start with the most severe patient)**

Patient Assessment: See IRPG page 106

Treatment:

**4. TRANSPORT PLAN:**

Evacuation Location (if different): (Descriptive Location (drop point, intersection, etc.) or Lat. / Long.) Patient's ETA to Evacuation Location:

Helispot / Extraction Site Size and Hazards:

**5. ADDITIONAL RESOURCES / EQUIPMENT NEEDS:**

*Example: Paramedic/EMT, Crews, Immobilization Devices, AED, Oxygen, Trauma Bag, IV/Fluid(s), Splints, Rope rescue, Wheeled litter, HAZMAT, Extrication*

**6. COMMUNICATIONS: Identify State Air/Ground EMS Frequencies and Hospital Contacts as applicable**

Function	Channel Name/Number	Receive (RX)	Tone/NAC *	Transmit (TX)	Tone/NAC *
COMMAND					
AIR-TO-GRND					
TACTICAL					

**7. CONTINGENCY: Considerations: If primary options fail, what actions can be implemented in conjunction with primary evacuation method? Be thinking ahead.**

**8. ADDITIONAL INFORMATION: Updates/Changes, etc.**

**REMEMBER:** Confirm ETA's of resources ordered. Act according to your level of training. Be Alert. Keep Calm. Think Clearly. Act Decisively.

Controlled Unclassified Information//Basic