

INCIDENT ACTION PLAN

Chuweah Creek Fire

July 15-16, 2021

Day/Night Operational Period 0600-0600



DOWNLOAD
IAP



SCAN TO
CHECK IN

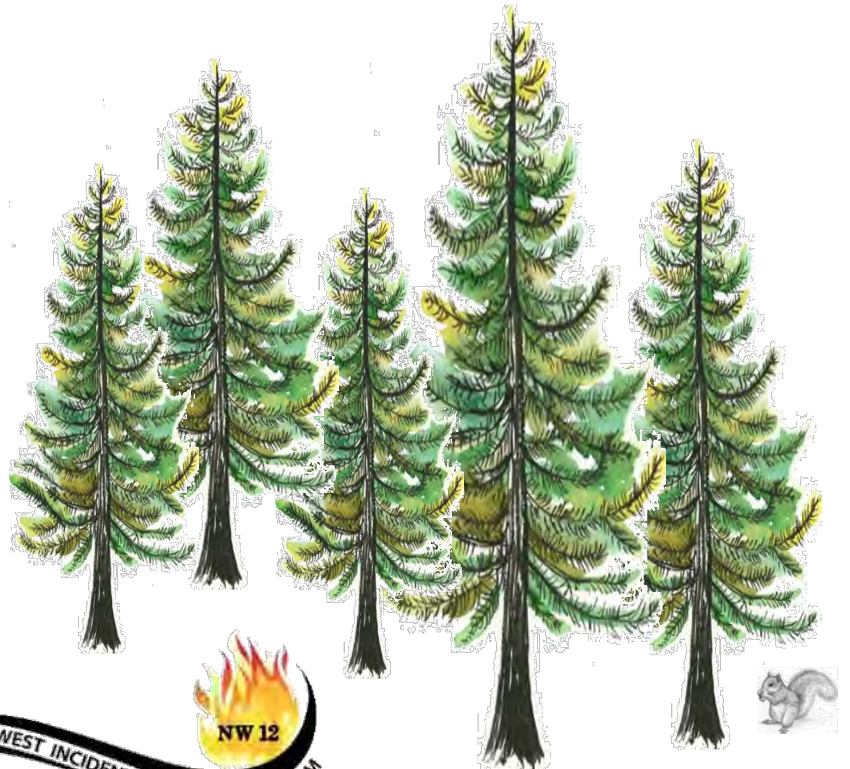
<https://bit.ly/2Rr545v>



DOWNLOAD
MAPS



WA-COA-200084




N5RG [P] 1522
221 KPA

INCIDENT OBJECTIVES (ICS 202)

1. Incident Name:	2. Operational Period: DAY/NIGHT	
CHUWEAH CREEK FIRE	Date/Time From: 07/15/2021 0600 THU	Date/Time To: 07/16/2021 0600 FRI
3. Objective(s):		
<p>Implement risk management practices for the safety of firefighters, other responders and the public as the first priority.</p> <p>Minimize impacts to private property, critical infrastructure, timber, cultural and natural resources including water, fish, wildlife, and range land.</p> <p>Maintain or improve positive community relationships and provide timely fire information to the public and cooperators.</p> <p>Establish and maintain all current COVID-19 mitigation protocols according to CDC guidelines.</p>		
4. Operational Period Command Emphasis:		
Implement direct suppression tactics where safe to do so to minimize fire size, protect timber values and private property.		
General Situational Awareness:		
Monitor the weather conditions and base all actions on current and expected fire behavior.		
5. Site Safety Plan Required? Yes <input type="checkbox"/> No <input checked="" type="checkbox"/>		
Approved Site Safety Plan(s) Located		
6. Incident Action Plan (the items checked below are included in this Incident Action Plan):		
<input checked="" type="checkbox"/> ICS 202 <input type="checkbox"/> ICS 207 <input checked="" type="checkbox"/> ICS 203 <input type="checkbox"/> ICS 208 <input checked="" type="checkbox"/> ICS 204 <input checked="" type="checkbox"/> ICS 220 <input checked="" type="checkbox"/> ICS 205 <input checked="" type="checkbox"/> Map/Chart <input type="checkbox"/> ICS 205A <input checked="" type="checkbox"/> Weather Forecast/Tides/Currents <input checked="" type="checkbox"/> ICS 206	Other Attachments: <input checked="" type="checkbox"/> HR MESSAGE _____ <input type="checkbox"/> _____ <input type="checkbox"/> _____ <input type="checkbox"/> _____	
7. Prepared by: HOWARD JOHNSON Position/Title: PSC2	Signature: <i>Howard Johnson</i>	
8. Approved by Incident Commander:	Name: BOB SHINDELAR	Signature: <i>Bob Shindelar</i>
ICS 202	IAP Page	Date/Time: 07/14/2021 2000

ORGANIZATION ASSIGNMENT LIST (ICS 203)

1. Incident Name:		2. Operational Period: DAY/NIGHT	
CHUWEAH CREEK FIRE		Date/Time From: 07/15/2021 0600	THU Date/Time To: 07/16/2021 0600 FRI
3. Incident Commander(s) and Command Staff:		MEDICAL UNIT	EAMMON RYAN; DIANA BRAUN LEE VENNING (T)
IC/UC	JEFF DIMKE	FOOD UNIT	RUSS HOVEY ALEXANDER LILLA
DEPUTY	BOB SHINDELAR	SECURITY UNIT	
SAFETY OFFICER	KEITH WAKEFIELD JACK CATES		
INFORMATION OFFICER	MARY BEAN; ROLAND EMETAZ CATHY MOSES		
LIAISON OFFICER	SCOTT CRAWFORD		
HUMAN RESOURCE SPECIALIST	SUSIE MANEZES	7. Operations Section:	
		OPS SECTION CHIEF	AARON ROWE
		PLANNING OPS	TONY ENGEL KURT RANTA (T)
4. Agency/Organization Representative(s):			
Agency/Organization	Name		
DNR AREP	PAT RYAN	DIVISION/GROUP	A/Z LARRY LEACH
BIA COLVILLE AGENCY AREP	JOSEPH HOLFORD	DIVISION/GROUP	D MATT KENNEDY
		DIVISION/GROUP	K/W BOB HINDS
		DIVISION/GROUP	NIGHT
5. Planning Section:		7b. Air Operations Branch:	
CHIEF	HOWARD JOHNSON	AIR OPS BRANCH DIRECTOR	PAUL BALFOUR
DEPUTY		AIR ATTACK SUPERVISOR	TIMLYDA
RESOURCES UNIT	JILL JOHNSON	AIR SUPPORT SUPERVISOR	
SITUATION UNIT	DAVE WISCHER	HELICOPTER COORDINATOR	
DOCUMENTATION UNIT		AIR TANKER COORDINATOR	
DEMOBILIZATION UNIT	MIKE HESTON	8. Finance/Administration Section:	
GIS SPECIALIST	SHAWN BUSHNELL MIKE TONKEL (T)	CHIEF	CHERI FULLER CHRISTINA GOEBEL
TECHNOLOGY SUPPORT SPECIALIST	GEORGE JENKINS TODD MALLERY	TIME UNIT	CAROL LONG
INCIDENT METEOROLOGIST	BOB TOBIN	PROCUREMENT UNIT	MARK BOHNET
		COST UNIT	KATHLEEN HIGH
		ICPI	ROB HECHINGER
6. Logistics Section:			
CHIEF	DAN SOPTICH		
DEPUTY	KEVIN HAUGHTON		
SUPPLY UNIT	JOHN KAUPA		
FACILITIES UNIT	MIKE RENDON		
GROUND SUPPORT UNIT	DAVE HARSH		
COMMUNICATIONS UNIT	MISSY PARKER		
9. Prepared By:	Name: JILL JOHNSON	Position/Title: RESL	Signature: 
ICS 203	IAP Page	Date/Time: 07/14/2021 2000	

Fire Weather Forecast

FORECAST NO: 2
PREDICTION FOR: Thursday
Shift Date: July 15-16, 2021 0600-0600
TIME AND DATE
FORECAST ISSUED: 7/14/2021 at 2000

INCIDENT: Chuweah Creek Fire
UNIT: Colville Reservation
SIGNED: Bob Tobin
Incident Meteorologist (IMET)

Weather Discussion: The upper level flow will shift to the southwest Thursday and Friday in response to a strengthening low pressure system in the eastern Pacific. Several weak disturbances will move through the region. This will allow temperatures to cool a few degrees on Thursday and cooler still Friday and Saturday. Temperatures will rebound Sunday into Monday. With each disturbance afternoon winds will become gusty. Relative humidity will remain quite dry through the weekend, but show some improvement Friday and Saturday. Overnight relative humidity recoveries will remain poor to moderates.

WEATHER FORECAST:

Today:

SKY/WEATHER: Sunny and a little cooler.
High Temperature...85-90 above 2500 feet...90-94 below 2500 feet.
Min RH.....14-18%
20-FOOT WINDS: Southwest 8 to 12 mph with gusts 15-20 mph after 1400.
CWR (>=0.10").... 0% **LAL....**1 **Haines Index...4 (Low)** **Mixing Height...8500 ft AGL**

Tonight:

Weather: Clear and a little cooler.
Low Temperature...59-63.
Max RH.....45-50%
20-FOOT WINDS: Southwest-west 8-10 mph after 2100 mph.
CWR (>=0.10")....0% **LAL...1.**

Friday:

SKY/WEATHER: Sunny and not so warm.
High Temperature...80-85 above 2500 feet...85-90 below 2500 feet.
Min RH.....20-25%
20-FOOT WINDS: South-southwest winds 10-12 mph with gusts to 20 mph.
CWR (>=0.10")....0% **LAL....1** **Haines Index...3 (Very Low)** **Mixing Height...8300 ft AGL**

Extended Outlook

Saturday... Sunny. Low: 54-58...High: 82-87. Min RH: 20-25% Winds: South-southwest 8-10.
Sunday...Sunny. Low: 60-65...High: 85-95. Min RH: 15-20% Winds: South-southwest 8-10 mph with gusts to 20 mph.

FIRE BEHAVIOR FORECAST

FORECAST NUMBER: 2	TYPE OF FIRE: Wildland
FIRE NAME: Chuweah Creek	OPERATIONAL PERIOD: July 15-16, 2021 0600-0600
DATE ISSUED: July 14, 2021	TIME ISSUED: 1800
UNIT: WA-COA	Don Strand FBAN

INPUTS

WEATHER SUMMARY: Sunny and cooler today. Max Temps near 94 with min RH near 14%. Winds SW 8-12 mph gusts to 20 mph.

OUTPUTS

FIRE BEHAVIOR

GENERAL: Fuels – both live and dead – are extremely dry. Expect active fire behavior today, especially in the afternoon with the stronger winds. Energy Release Component at Nespelem and Gold Mountain RAWS' are in the 97+ percentile. Fuel moistures are; 1 hour min. 2-3%, 10-hour min. 3-4%, 100-hour min 4-5%. 1000-hour fuel moistures are 6-7%. Fuels are mixed grass, brush, conifer with grass and brush understory with areas of light logging slash.

Probability of Ignition will approach 90% today. Maximum spotting distance approaching 0.3 mile or more with afternoon winds. Expect continued fire spread today. Single and group torching likely with potential for periodic runs in afternoon continuing into evening.

Potential Rates of Spread and Flame Lengths calculated using forecasted weather and NFDRS fuels data from Nespelem and Gold Mountain RAWS

	FM 2 Grass	FM 5 Brush	FM 9 Needle litter	FM 10 Heavy litter
Rate of Spread	140 Chain/Hr.	85 Chain/Hr.	27 Chain/Hr.	29 Chains/Hr.
Flame Length	13'	11'	5'	10'

Specific:

DIV: D and K. Expect fire spread to the east and north. Active surface fire spread with torching and spotting today, continuing into late evening. Watch for any hold over spots from yesterday's fire activity.

DIV: W. Expect backing and flanking fire behavior with periodic torching.

AIR OPERATIONS: Watch for turbulence in the complex terrain.

SAFETY

Keep an eye out for hold over spots as well as any new spots. A spot fire in light fuels can develop very quickly.

Local Thresholds - Combinations of any of these factors can greatly increase fire behavior; 20' wind speed over 6 MPH, RH less than 16%, Temperatures over 89°.

Watch for increased fire activity with wind slope alignment.

Safety Message

July 15-16, 2021

INCIDENT: Chuweah Creek

OPERATIONAL PERIOD: 0600-0600

TOPICS:



RED FLAG WARNING

Critical thresholds are expected to be met for max temps, RH, and windspeed to make for a critical weather day. Ensure that when you engage, you have a solid anchor point, good trigger points, and LCES in place.

COMMUNICATIONS

Remember that we are using local Unit Repeaters for all Command Channel communications. Expect Initial Attack traffic. Have a back up plan for emergency communication to ICP including use of Human repeaters on and cell phones.

AS ALWAYS, REMEMBER TO:

1. Brief others as needed
2. Debrief your actions
3. Communicate hazards to others
4. Acknowledge messages
5. Ask if you don't know



****KEEP UP ON PROPER HYDRATION BEFORE, DURING, AND AFTER SHIFT****

SAFETY OFFICER: Jack Cates, Keith Wakefield, Taija Corso (T)

Deliberate Risk Assessment-Hazard Summary

July 15-16, 2021 0600 - 0600

Hazard	Mitigation	Post Risk
Viral Transmission Mitigations, Communicable Disease	Maintain awareness of health, perform self-checks, maintain social distancing, and wear face coverings in accordance with CDC recommendations. Report and isolate if not feeling well.	Low
Extraction Time	Identify medivac sites and helispots. Initiate ground transport to accident site. Identify EMT/EMTP from resources assigned to division. Provide line qualified paramedics to each division as available. Review IWI protocol to ensure familiarity. Utilize civilian medivac as treatment/timing dictates. Evaluate on-going need for repositioning medical personnel.	High
Steep Terrain/Gravity	Do not work crews above or below each other. Post lookouts for rolling material. Watch footing in loose soil, rock and around vegetation. Do not work below heavy equipment. Scout and identify travel routes. Establish LCES.	Moderate
Snags	Use avoidance to limit exposure time. Snag ahead to avoid exposure. Use qualified fallers, blasting, or alternate methods if needed. Conduct on-going risk analysis of all work areas. Follow Hazard Tree Safety Guidelines (IRPG page 22).	High
Communication	Evaluate for dead zones prior to engagement. Utilize human repeaters as needed. Ensure accountability of resources in problem areas.	Moderate
Physical Factors	Maintain hydration schedule. Closely monitor work rate and implement rest periods. Maintain nutrition. Ensure adequate work/rest.	Moderate
Environmental Factors	Assign medical personnel to camp. Assess for known allergies and report to medical personnel. Obtain Bee Bopper/wasp spray and yellow jacket traps. Maintain an awareness of livestock and rattlesnakes.	Moderate
Fire Behavior	Be aware of burn windows and weather impacts and min/max RH for flashy fuels/local conditions. Report changes to FBAN and IMET.	Moderate
Unburned Fuels/Firing Ops	Establish LCES. Ensure management action points are implemented and followed. Weather updates as needed during burning operations. Locate indirect firelines to minimize the amount of unburned fuels. Follow Interagency Ignition Guide. Ensure communications between all firing operations. Establish road security at all firing sites. Follow approved firing plan for unburned fuels.	Moderate
Transportation	Signing of all incident roads that provide access to divisions. Daily updated travel plan maps. Practice defensive driving. In local communities obey the posted speed limits. Use reader boards to control entry as needed. Identify and evaluate contingency and alternate escape and travel routes.	High
Aircraft	Utilize Air Attack. Ensure all resources are a safe distance from all bucket and retardant drops. Establish LCES. Utilize air to ground primary radio channel. Reference IRPG (Safe aircraft operations pg. 56-58). Ensure IA resources have coordination with unassigned local air resources to provide deconfliction.	High
Heavy Equipment	Post lookouts around equipment work areas. Establish communications with equipment boss and operator. Do not work down slope from equipment.	High
Transmission Lines	Maintain one span radius from any downed line or compromised pole, be aware of smoke conductivity, report any downed lines or burning poles.	High
Public Interaction	Place new road closures as necessary and maintain current closures. Maintain awareness of evacuation areas and provide accurate information dissemination.	Low
Initial Attack	Ensure identified IA resources are briefed of expectations and ensure communication plan is provided. Ensure resources are briefed on IA command structure. Provide identified crews with area maps.	Moderate

Division/Group Assignment List (ICS 204 WF)
Controlled Unclassified Information//Basic

1. Incident Name:				3.		
CHUWEAH CREEK FIRE				Branch:	Division/Group A/Z	
2. Operational Period: DAY/NIGHT						
Date/Time From: 07/15/2021 0600 THU		Date/Time To: 07/16/2021 0600 FRI				
4. Operations Personnel						
DIVISION/GROUP SUPERVISOR		LARRY LEACH		AIR ATTACK SUPERVISOR		PAUL BALFOUR
OPERATIONS CHIEF		AARON ROWE; TONY ENGEL KURT RANTA (T)		SAFETY OFFICER		KEITH WAKEFIELD JACK CATES
5. Resources Assigned this Period						
Strike Team / Task Force / Resource Designator		LWD	Leader	Number Persons	Drop Off PT./Time	Pick Up PT./Time
O-1.55 SOF2		07/27	DON WALLER	1	ICP/0600	ICP/1800
E-4 ENG5 DNR HI 7104			ENRIQUE ORTEGA	4	ICP/0600	ICP/1800
E-6 ENG5 DNR SO 7202			AUSTIN VARGAS	4	ICP/0600	ICP/1800
E-11 ENG6 ENGINE					ICP/0600	ICP/1800
E-14 ENG6 BLACK PINE		07/20	JOE BEATTEY	3	ICP/0600	ICP/1800
E-16 ENG6 THE GENERAL BR 102		07/20	ADAM BENKEL	2	ICP/0600	ICP/1800
E-76 WTS2 BIA				1	ICP/0600	ICP/1800
E-23 DOZ3 TIGER TRUCKING D5			CODY HASTINGS	2	ICP/0600	ICP/1800
E-19 EMT 2 LIFELINE					ICP/0600	ICP/1800
INSURANCE ENGINE RAINIER 10				2		
INSURANCE ENGINE 5433				2		
INSURANCE ENGINE SGS7				2		
8. Division/Group Communication Summary						
Function	Channel	RX Frequency N/W	RX Tone/NAC	TX Frequency N/W	TX Tone/NAC	Mode
COMMAND	9	164.1625	123.0	169.7125	136.5	A
COMMAND	10	164.1625	100.0	169.7125	136.5	A
TACTICAL	1	168.0500	123.0	168.0500	123.0	A
AIR TO GROUND	14	171.6750		171.6750		A
9. Prepared By (Resource Unit Leader)			Approved By (Planning Section Chief)		Date	Time
JILL JOHNSON			HOWARD JOHNSON		07/14/2021	2000

Division/Group Assignment List (ICS 204 WF)
Controlled Unclassified Information//Basic

1. Incident Name:			3.			
CHUWEAH CREEK FIRE			Branch:		Division/Group	
2. Operational Period: DAY/NIGHT					A/Z	
Date/Time From: 07/15/2021 0600 THU		Date/Time To: 07/16/2021 0600 FRI				
4. Operations Personnel						
DIVISION/GROUP SUPERVISOR		LARRY LEACH		AIR ATTACK SUPERVISOR		PAUL BALFOUR
OPERATIONS CHIEF		AARON ROWE; TONY ENGEL KURT RANTA (T)		SAFETY OFFICER		KEITH WAKEFIELD JACK CATES
5. Resources Assigned this Period						
Strike Team / Task Force / Resource Designator		LWD	Leader	Number Persons	Drop Off PT./Time	Pick Up PT./Time
6. Control Operations/Work Assignments:						
<p>TASK - Patrol structures and fire perimeter. PURPOSE - Protect property and resources. END STATE - Fire is contained within the current perimeter and the threat to structures is limited.</p>						
7. Special Instructions:						
Utilize direct line tactics where possible. Burn out indirect line as needed.						
8. Division/Group Communication Summary						
Function	Channel	RX Frequency N/W	RX Tone/NAC	TX Frequency N/W	TX Tone/NAC	Mode
COMMAND	9	164.1625	123.0	169.7125	136.5	A
COMMAND	10	164.1625	100.0	169.7125	136.5	A
TACTICAL	1	168.0500	123.0	168.0500	123.0	A
AIR TO GROUND	14	171.6750		171.6750		A
9. Prepared By (Resource Unit Leader)			Approved By (Planning Section Chief)		Date	Time
JILL JOHNSON			HOWARD JOHNSON		07/14/2021	2000

Division/Group Assignment List (ICS 204 WF)
Controlled Unclassified Information//Basic

1. Incident Name:			3.			
CHUWEAH CREEK FIRE			Branch:		Division/Group	
2. Operational Period: DAY/NIGHT					D	
Date/Time From: 07/15/2021 0600 THU		Date/Time To: 07/16/2021 0600 FRI				
4. Operations Personnel						
DIVISION/GROUP SUPERVISOR		MATT KENNEDY		AIR ATTACK SUPERVISOR		PAUL BALFOUR
OPERATIONS CHIEF		AARON ROWE; TONY ENGEL KURT RANTA (T)		SAFETY OFFICER		KEITH WAKEFIELD JACK CATES
5. Resources Assigned this Period						
Strike Team / Task Force / Resource Designator		LWD	Leader	Number Persons	Drop Off PT./Time	Pick Up PT./Time
O-1.67 SOF2		07/27	JOSH NORTHRUP	1	ICP/0600	ICP/1800
E-5 ENG5 DNR SO 7206			JADON MCCABE	4	ICP/0600	ICP/1800
E-9 ENG6 ENGINE					ICP/0600	ICP/1800
E-87 SKG3 SKIDGINE		07/28	JACK OBRYAN	2	ICP/0600	ICP/1800
E-1 WTS2 INNES WOOD PRODUCTS		07/27	SCOTT DAWSON	1	ICP/0600	ICP/1800
E- DOZ3 MCCLURE EQUIP			GARY MCCLURE	2	ICP/0600	ICP/1800
E-17 AMBU LIFELINE					ICP/0600	ICP/1800
6. Control Operations/Work Assignments:						
<p>TASK - Anchor and flank the fire perimeter from A/D division break, south to the D/K division break. PURPOSE - Protect resources & property north and east of fire perimeter. END STATE - Anchor point establish on Cache Creek Rd and structures are protected.</p>						
7. Special Instructions:						
Utilize direct line tactics where possible. Burn out indirect line as needed.						
8. Division/Group Communication Summary						
Function	Channel	RX Frequency N/W	RX Tone/NAC	TX Frequency N/W	TX Tone/NAC	Mode
COMMAND	9	164.1625	123.0	169.7125	136.5	A
TACTICAL	2	168.2000	123.0	168.2000	123.0	A
AIR TO GROUND	14	171.6750		171.6750		A
9. Prepared By (Resource Unit Leader)			Approved By (Planning Section Chief)		Date	Time
JILL JOHNSON			HOWARD JOHNSON		07/14/2021	2000

Division/Group Assignment List (ICS 204 WF)
Controlled Unclassified Information//Basic

1. Incident Name:				3.		
CHUWEAH CREEK FIRE				Branch:	Division/Group K/W	
2. Operational Period: DAY/NIGHT						
Date/Time From: 07/15/2021 0600 THU		Date/Time To: 07/16/2021 0600 FRI				
4. Operations Personnel						
DIVISION/GROUP SUPERVISOR		BOB HINDS		AIR ATTACK SUPERVISOR		PAUL BALFOUR
OPERATIONS CHIEF		AARON ROWE; TONY ENGEL KURT RANTA (T)		SAFETY OFFICER		KEITH WAKEFIELD JACK CATES
5. Resources Assigned this Period						
Strike Team / Task Force / Resource Designator		LWD	Leader	Number Persons	Drop Off PT./Time	Pick Up PT./Time
O-1.66 SOF2		07/27	JOHN BARNES	1	ICP/0600	ICP/1800
E-24 DOZ3 JONES LOGGING			JASON JONES	2	ICP/0600	ICP/1800
E-77 DOZ3 BIA				2	ICP/0600	ICP/1800
E-88 SKG3 SKIDGINE		07/28	SCOTT SHINALL	2	ICP/0600	ICP/1800
6. Control Operations/Work Assignments:						
TASK - Anchor and flank the fire perimeter from Z/W division break to the K/D division break. PURPOSE - Protect resources and property southeast of the fire. END STATE - The fire is contained north of Buffalo Lake and west of Keller Butte Rd.						
7. Special Instructions:						
Utilize direct line tactics where possible. Burn out indirect line as needed.						
8. Division/Group Communication Summary						
Function	Channel	RX Frequency N/W	RX Tone/NAC	TX Frequency N/W	TX Tone/NAC	Mode
COMMAND	9	164.1625	123.0	169.7125	136.5	A
TACTICAL	3	168.6000	123.0	168.6000	123.0	A
AIR TO GROUND	14	171.6750		171.6750		A
9. Prepared By (Resource Unit Leader)			Approved By (Planning Section Chief)		Date	Time
JILL JOHNSON			HOWARD JOHNSON		07/14/2021	2000

Division/Group Assignment List (ICS 204 WF)
Controlled Unclassified Information//Basic

1. Incident Name:			3.			
CHUWEAH CREEK FIRE			Branch:		Division/Group	
2. Operational Period: DAY/NIGHT					NIGHT	
Date/Time From: 07/15/2021 0600 THU		Date/Time To: 07/16/2021 0600 FRI				
4. Operations Personnel						
OPERATIONS CHIEF		AARON ROWE; TONY ENGEL KURT RANTA (T)		DIVISION/GROUP SUPERVISOR		
AIR ATTACK SUPERVISOR		PAUL BALFOUR		SAFETY OFFICER		JACK CATES ; KEITH WAKEFIELD TAIJA CORSO (T)
5. Resources Assigned this Period						
Strike Team / Task Force / Resource Designator		LWD	Leader	Number Persons	Drop Off PT./Time	Pick Up PT./Time
O-3 TFLD		07/21	LANNIE PEDERSEN	1	ICP/1800	ICP/0600
O-4 TFLD (T)		07/21	ROSS AVICHOUSER	1	ICP/1800	ICP/0600
O- TFLD			CODY DESUATEL	1	ICP/1800	ICP/0600
C- HC21 HIGHLANDS		07/19	SETH SCHERTENLEIB	20	ICP/1800	ICP/0600
E-7 ENG6 NORTHERN COLUMBIA REFOR		07/20	LENORD DENISON	2	ICP/1800	ICP/0600
E-10 ENG6 EARLY WINTERS		07/20	CHRIS SURFACE	3	ICP/1800	ICP/0600
E-12 ENG6 AEGIS LOGISTICS		07/20	ROY VARENEY	3	ICP/1800	ICP/0600
E-13 ENG6 AEGIS LOGISTICS		07/18	KERRI HENDRIX	3	ICP/1800	ICP/0600
E-15 ENG6 AMERICAN FIREFIGHTER CO		07/20	MIKE RIDEOUT	3	ICP/1800	ICP/0600
E-20 ENG5 DNR HI 7103		07/26	CODY EPPS	4	ICP/1800	ICP/0600
E-21 ENG5 DNR HI 7109		07/26	BROCK HENNEMAN	5	ICP/1800	ICP/0600
E-76 WTS2 BIA				1	ICP/1800	ICP/0600
E-22 DOZ3 PUMPER CAT				2	ICP/1800	ICP/0600
E-77 DOZ3 BIA			JIM PHILLIPS	2	ICP/1800	ICP/0600
E- DOZ3 MCCLURE				2	ICP/1800	ICP/0600
E-18 EMT1 LIFELINE AMBULANCE		07/27	MARA LANDRUM		ICP/1800	ICP/0600
8. Division/Group Communication Summary						
Function	Channel	RX Frequency N/W	RX Tone/NAC	TX Frequency N/W	TX Tone/NAC	Mode
COMMAND	9	164.1625	123.0	169.7125	136.5	A
COMMAND	10	164.1625	100.0	169.7125	136.5	A
TACTICAL	4	166.7250	123.0	166.7250	123.0	A
AIR TO GROUND	14	171.6750		171.6750		A
9. Prepared By (Resource Unit Leader)			Approved By (Planning Section Chief)		Date	Time
JILL JOHNSON			HOWARD JOHNSON		07/14/2021	2000

Division/Group Assignment List (ICS 204 WF)
Controlled Unclassified Information//Basic

1. Incident Name:			3.			
CHUWEAH CREEK FIRE			Branch:		Division/Group	
2. Operational Period: DAY/NIGHT			NIGHT			
Date/Time From: 07/15/2021 0600 THU		Date/Time To: 07/16/2021 0600 FRI				
4. Operations Personnel						
OPERATIONS CHIEF		AARON ROWE; TONY ENGEL KURT RANTA (T)		DIVISION/GROUP SUPERVISOR		
AIR ATTACK SUPERVISOR		PAUL BALFOUR		SAFETY OFFICER		JACK CATES ; KEITH WAKEFIELD TAIJA CORSO (T)
5. Resources Assigned this Period						
Strike Team / Task Force / Resource Designator		LWD	Leader	Number Persons	Drop Off PT./Time	Pick Up PT./Time
6. Control Operations/Work Assignments:						
<p>Div A/Z TASK - Patrol structures and fire perimeter. PURPOSE - Protect property and resources. END STATE - Fire is contained within the current perimeter and the threat to structures is limited.</p> <p>Div D TASK - Anchor and flank the fire perimeter from A/D division break, south to the D/K division break. PURPOSE - Protect resources & property north and east of fire perimeter. END STATE - Anchor point established on Cache Creek Rd and structures are protected.</p> <p>Div K/W TASK - Anchor and flank the fire perimeter from Z/W division break to the K/D division break. PURPOSE - Protect resources and property southeast of the fire. END STATE - The fire is contained north of Buffalo Lake and west of Keller Butte Rd.</p>						
7. Special Instructions:						
Utilize direct line tactics where possible. Burn out indirect line as needed.						
8. Division/Group Communication Summary						
Function	Channel	RX Frequency N/W	RX Tone/NAC	TX Frequency N/W	TX Tone/NAC	Mode
COMMAND	9	164.1625	123.0	169.7125	136.5	A
COMMAND	10	164.1625	100.0	169.7125	136.5	A
TACTICAL	4	166.7250	123.0	166.7250	123.0	A
AIR TO GROUND	14	171.6750		171.6750		A
9. Prepared By (Resource Unit Leader)			Approved By (Planning Section Chief)		Date	Time
JILL JOHNSON			HOWARD JOHNSON		07/14/2021	2000

AIR OPERATIONS SUMMARY

PREPARED BY: Paul Balfour

PREPARED DATE/TIME: July 14, 2130 hrs

INCIDENT NAME CHUWEAH CR	2. OPERATIONAL PERIOD: Date: July 15-16, 2021 0600-0600 Helibase Start Time: 0830 End Time: 2000 Sunrise: 0510 Sunset: 2044 (Times valid for Nespelem)
------------------------------------	---

3. REMARKS (Safety Notes, Hazards, Air Operations Special Equipment, etc.): General Aviation, See & Avoid Bucket work, Retardant drops: ensure area is clear of ground personnel before dropping; watch for wires; be aware of potential for turbulence at ridge tops, saddles, canyons, etc *** BE AWARE OF FATIGUE, TAKE LONGER BREAKS WHEN FLYING IN SMOKEY CONDITIONS. *** Report all TFR intrusions to Air Operations, Air Support or Helibase as soon as possible.	4. MEDEVAC A/C: Contact Mt Tolman Fire Center for closes availability 509-634-3100	5. TFR #1/8801 (A48) Freq: 118.400
---	---	--

6. PERSONNEL	LWD	Phone	7. FREQUENCIES	AM	FM	8. FIXED-WING	# Avail / Type/ Make-Model / FAA N# / Base(s)
AOBD: Paul Balfour O-1.36	7/16	509-993-8739	AIR/AIR Primary (A-6)	118.4000		Lead Planes, Air Tankers, & SEATs	Order as needed through ATGS/AOBD or Mt Tolman Dispatch
ASGS: Tim Lyda O-1.37		541-761-2676	AIR/AIR Secondary (A-7)	12402500			
HEBM:			AIR/GROUND Primary (A-4)		171.6750	ATGS Aircraft	AA Michelle Moore 208-608-6638 690 Commander, IA Air Attacks: Order thru Mt Tolman/NEWICC LATs Order through Air Attack/AOBD Mt Tolman Dispatch
HEMG:			AIR/GROUND Secondary (A-5)		171.7500		
ATGS:			DNR-AIR/GROUND IA		159.270 T-103.5		
ATGS:			AIR/Ground Ch 51 IA		168.3125		
Mt Tolman: Deb Coudell		509-571-4133	UNICOM OMAK	122.8		NOTES:	
			DECK				

9. HELICOPTERS

FAA N#	TY	MAKE/MODEL	BASE	START	AVAIL	REMARKS	FAA N#	TY	MAKE/MODEL	BASE	START	AVAIL	REMARKS
							NOCB	1	K MAX	OMAK	0830	0900	DNR Lend/Lease Only

INCIDENT RADIO COMMUNICATIONS PLAN (ICS 205)

Controlled Unclassified Information//Basic

1. Incident Name:	2. Date/Time Prepared:	3. Operational Period: DAY/NIGHT	
CHUWEAH CREEK FIRE	Date: 07/14/2021 Time: 2000	Date/Time From: 07/15/2021 0600 THU	Date/Time To: 07/16/2021 0600 FRI

4. Basic Radio Channel Use:

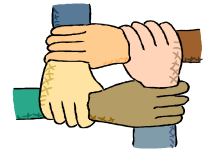
Zone Group	Ch #	Function	Channel Name/Trunked Radio System Talkgroup	Assignment	RX Freq	RX Tone/NAC	TX Freq	TX Tone/NAC	Mode (A,D, or M)	Remarks
	1	TACTICAL	TAC 1	DIV A / Z	168.0500	123.0	168.0500	123.0	A	
	2	TACTICAL	TAC 2	DIV D	168.2000	123.0	168.2000	123.0	A	
	3	TACTICAL	TAC 3	DIV K / W	168.6000	123.0	168.6000	123.0	A	
	4	TACTICAL	TAC 4	NIGHT	166.7250	123.0	166.7250	123.0	A	
	5	TACTICAL	TAC 5	RESERVED	166.7750	123.0	166.7750	123.0	A	NOT IN SERVICE
	6	TACTICAL	TAC 6	RESERVED	168.2500	123.0	168.2500	123.0	A	NOT IN SERVICE
	7	COMMAND	CMD 7	RESERVED	170.4500	123.0	168.1000	123.0	A	NOT IN SERVICE
	8	COMMAND	CMD 8	RESERVED					A	NOT IN SERVICE
	9	COMMAND	KELLER	EAST SIDE	164.1625	123.0	169.7125	136.5	A	
	10	COMMAND	MOSES	WEST SIDE	164.1625	100.0	169.7125	136.5	A	
	11	TACTICAL	WA REDNET		153.8300		153.8300		A	IA ONLY
	12	TACTICAL	FIRE A CAR-CAR		169.7250	88.5	169.7250	88.5	A	IA ONLY
	13	AIR TO GROUND	A/G 51		168.3125		168.3125		A	IA ONLY
	14	AIR TO GROUND	A/G PRI		171.6750		171.6750		A	AIR TO GROUND PRIMARY
	15	AIR TO GROUND	A/G SEC		171.7500		171.7500		A	AIR TO GROUND SECONDARY
	16	AIR GUARD	AIRGUARD	AIRGUARD	168.6250		168.6250	110.9	A	EMERGENCY AIR TRAFFIC ONLY

5. Special Instructions:

6. Prepared By (Communications Unit Leader)	Name: MISSY PARKER	Signature: <i>Missy Parker</i>
ICS 205	IAP Page	Date/Time: 07/14/2021 2000



Human Resource Message



**Chuweah Creek Fire
July 15-16, 2021 0600-0600**

As the Human Resource Specialist assigned to the Chuweah (Chew-Ya) Creek Fire, my role is to facilitate a positive work environment, and be a focal point for informal resolution of issues and concerns. You may come to me with any question or concern about any aspect of your work environment while assigned to the incident.

My office is located at the Nespelem Community Center and my contact number is 602-571-9327. Come see me any time you have questions, concerns, or just want to chat.

As you go about your day, please keep in mind mutual respect. Please be patient and kind to yourself, your co-workers, and with the people of this community. A simple “Hello” goes a long way toward establishing a human connection with others. This fire was devastating to many members of this community and a kind gesture, even a simple hello can make a difference.

If you have questions or need assistance with anything that is related to this fire, please let us know. We are here to support you. Have a safe day!

NESPELEM HISTORY

Nespelem was founded by the Yakama leader Chief Kamiakin and officially incorporated on April 15, 1935. “Nespelem” is a Native American word meaning "large meadow beside a stream". The small town is located on the Colville Indian Reservation, is home to the Colville Tribal Cultural Center and hosts the site of a historic Nez Perce cemetery. Among those buried there is Chief Joseph.

**Susie Manezes, PNW-Team 12- Human Resource Specialist (HRSP)
Contact Number: 602-571-9327**

LOGISTICS MESSAGE

GROUND SUPPORT

Ground Support hours 0600-2200

Attention WEX card users... Fuel is available in Nespelem at Jacksons Service Station. See ground support for directions.

SUPPLY

Cache hours 0600-2200

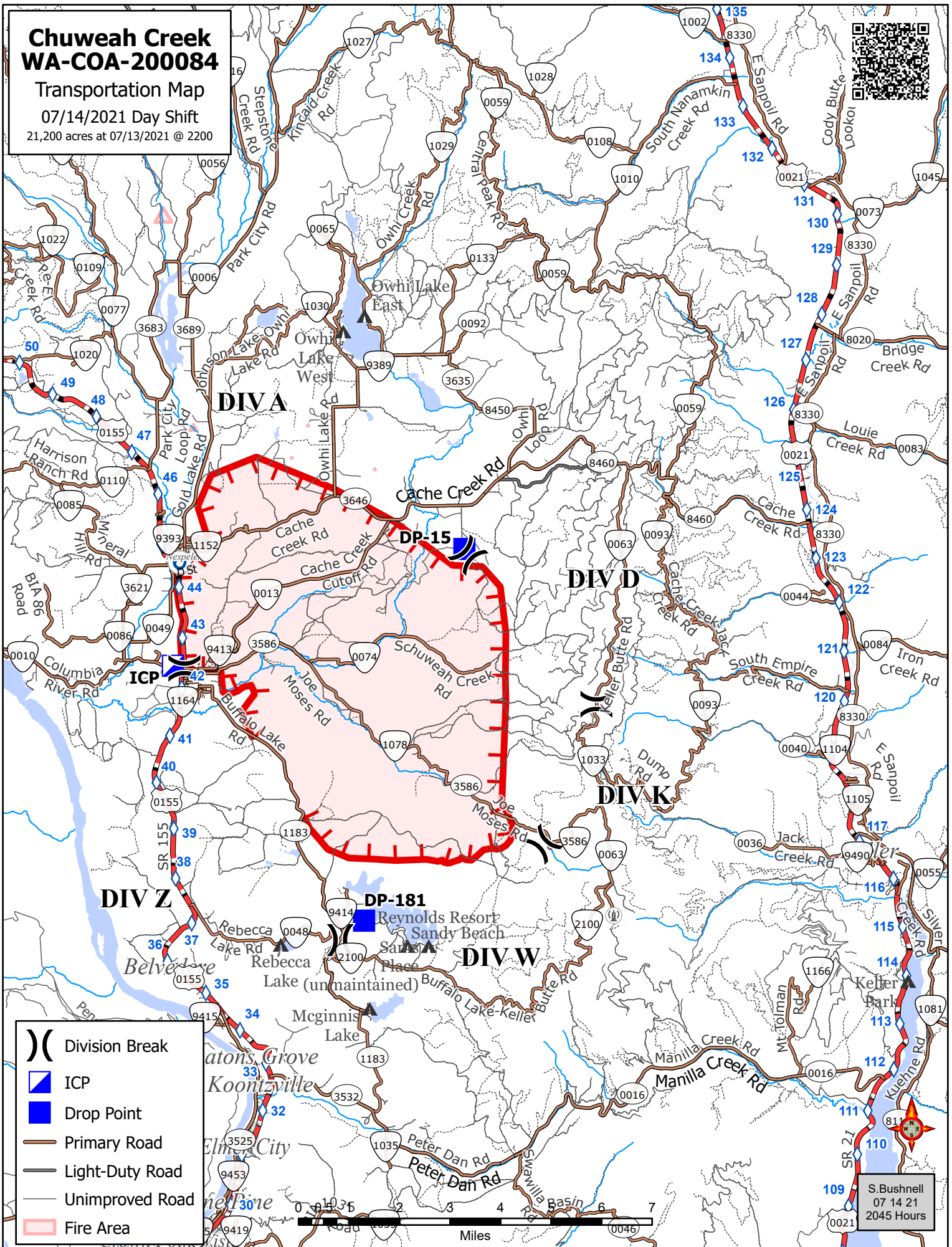
Cache orders prior to 0900 should be delivered same day.

Chuweah Creek WA-COA-200084

Transportation Map

07/14/2021 Day Shift

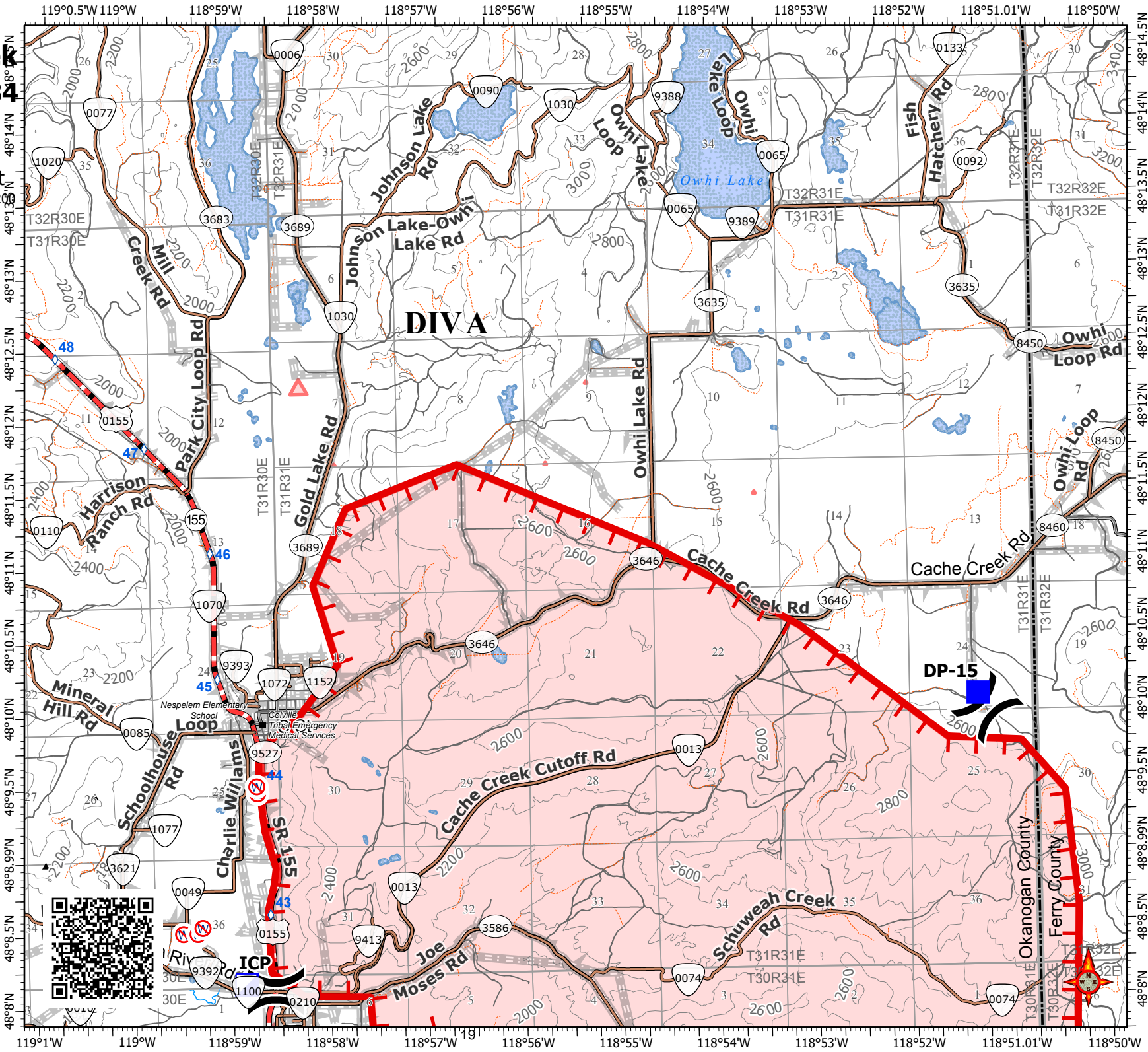
21,200 acres at 07/13/2021 @ 2200



Chuweah Creek WA-COA-200084 IAP Map

07/14/2021 Day Shift
21,200 acres at 07/13/2021 @ 2200

-) Division Break
- Incident Command Post
- Drop Point
- Aerial Hazard
- Structures
- No Dip Site
- Fire Edge
- Primary Road
- Light-Duty Road
- Unimproved Road
- Fire Area
- Tribal Government



DIVA

DP-15

ICP

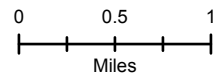
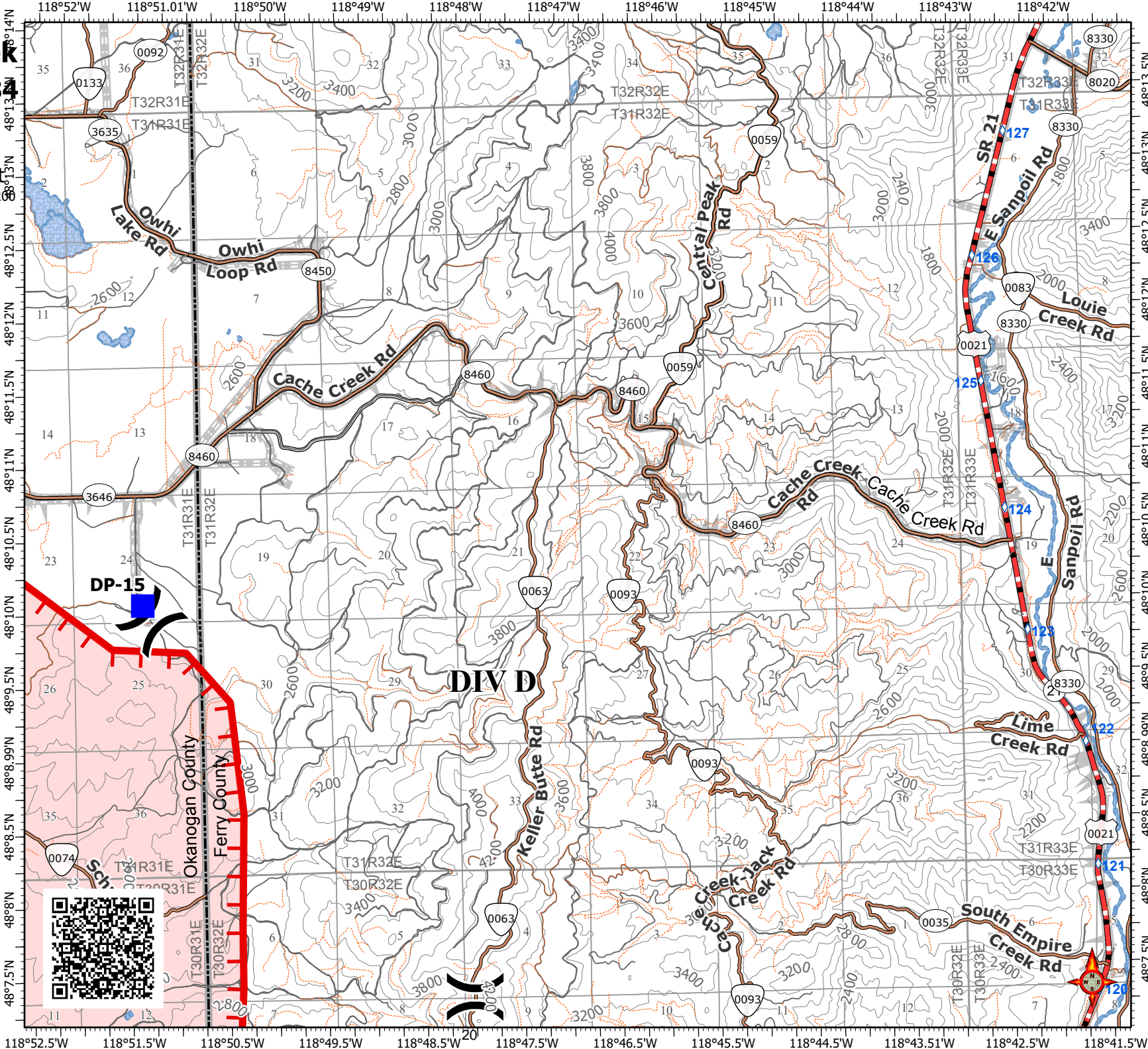
S. Bushnell
07 14 21
2102 Hours

Acres from hand sketch
Datum: North American 1983 HARN

Chuweah Creek WA-COA-200084 IAP Map

07/14/2021 Day Shift
21,200 acres at 07/13/2021 @ 2200

- () Division Break
- Drop Point
- ⊗ Aerial Hazard
- ▬ Fire Edge
- ▬ Primary Road
- ▬ Light-Duty Road
- ▬ Unimproved Road
- Fire Area
- Tribal Government



S. Bushnell
07 14 21
2102 Hours

Acres from hand sketch
Datum: North American 1983 HARN



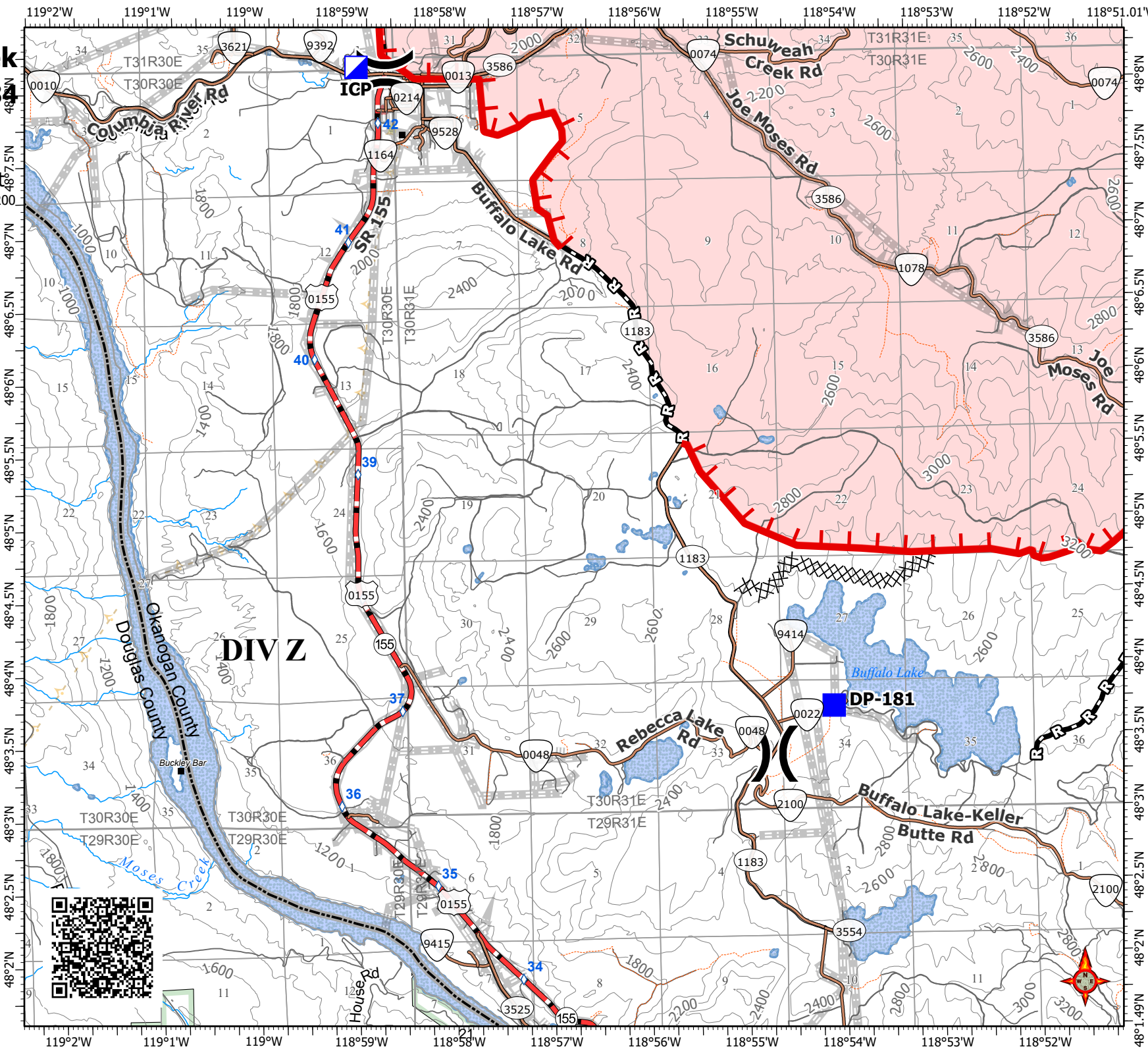
DIV D

Chuweah Creek WA-COA-20008

IAP Map

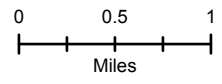
07/14/2021 Day Shift
21,200 acres at 07/13/2021 @ 2200

-) Division Break
- ▣ Incident Command Post
- Drop Point
- ⊗ Aerial Hazard
- Structures
- ⊗ No Dip Site
- ⊗ Completed Dozer Line
- ▣ Completed Road as Line
- ┌ Fire Edge
- Primary Road
- Light-Duty Road
- Unimproved Road
- - - Utility Line
- Substation
- Fire Area
- Federal Government
- Tribal Government



DIV Z

DP-181



S. Bushnell
07 14 21
2102 Hours

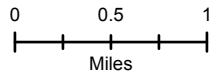
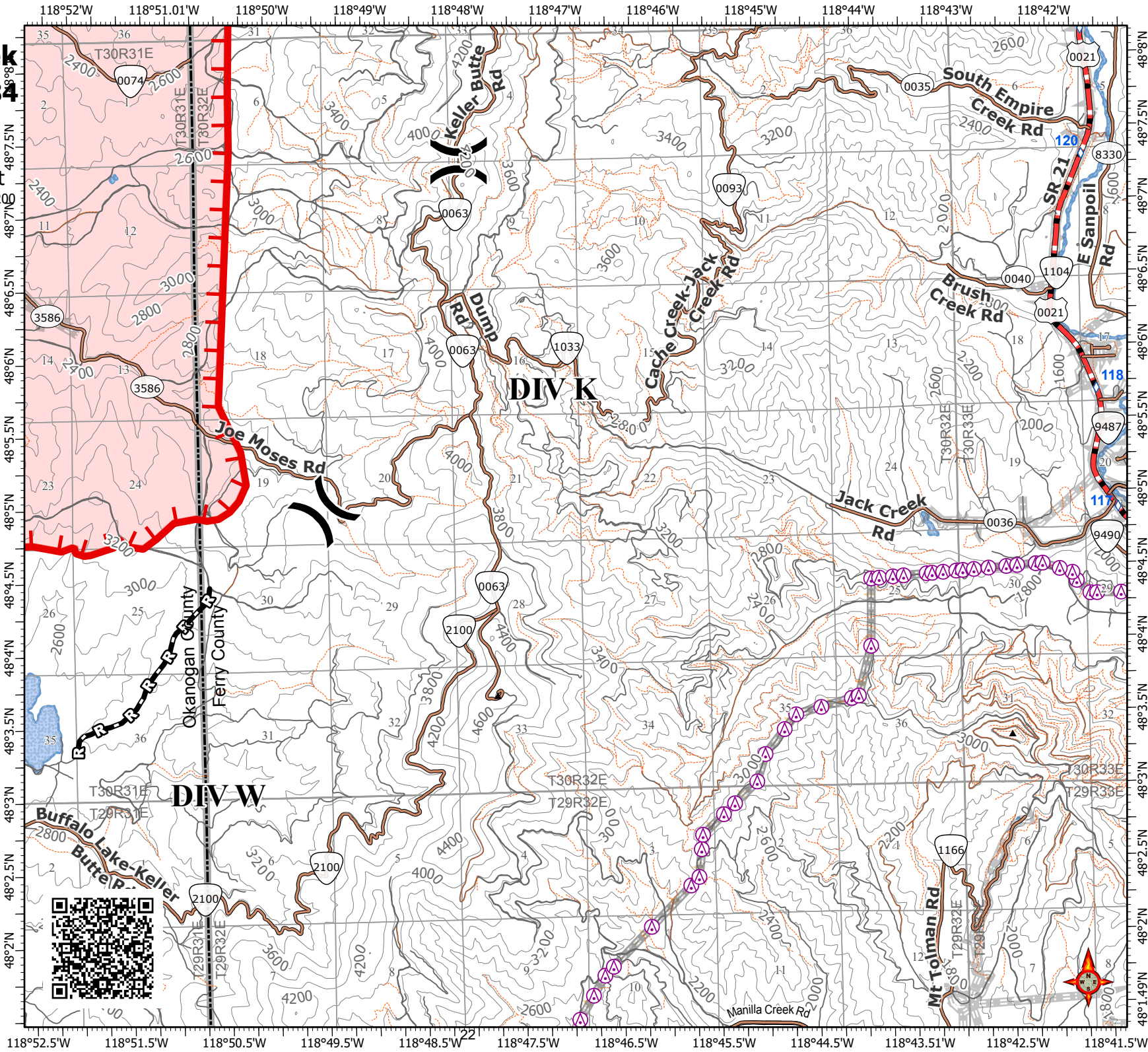
Acres from hand sketch
Datum: North American 1983 HARN



Chuweah Creek WA-COA-200084 IAP Map

07/14/2021 Day Shift
21,200 acres at 07/13/2021 @ 2200

-  Division Break
-  Aerial Hazard
-  Completed Road as Line
-  Fire Edge
-  Primary Road
-  Light-Duty Road
-  Unimproved Road
-  Transmission Lines
-  Utility Line
-  Fire Area
-  Tribal Government



S. Bushnell
07 14 21
2102 Hours

Acres from hand sketch
Datum: North American 1983 HARN



COVID-19 MITIGATIONS FOR CHUWEAH FIRE

- Fully vaccinated individuals are not required to wear masks in camp or at ICP.
- Individuals who have not been vaccinated should continue to wear masks and observe social distancing while gathered with others outside of their module and during ANY indoor activities.
- Conduct daily verbal screening checks within crews, report any COVID-like symptoms to your direct supervisor. Supervisors should report any positive symptoms to the Medical Unit for next steps.
- To the extent possible, observe “Module as One” practices between crews, allowing for safe distance and minimizing close contact with other crews and resources.
- Limit traffic inside of the ICP building to Incident Management Team members and essential visitors as much as possible.
- Observe social distancing standards while waiting in line for food and limit contact with others outside of your crew in the food service line. If possible, send crew representatives to pick up meals.
- Practice good personal hygiene, wash hands frequently and disinfect high-traffic areas on a regular basis.
- Limit close contact between firefighters and the public as much as possible to prevent exposure and spread.

UNIT LOG		1. Incident Name	2. Date Prepared	3. Time Prepared
4. Unit Name/Designators		5. Unit Leader (Name and Position)	6. Operational Period	
7. Personnel Roster Assigned				
Name	ICS Position	Home Base		
8. Activity Log				
Time	Major Events			
9. Prepared by (Name and Position)				

EMERGENCY PLAN

INCIDENT WITHIN AN INCIDENT

ON SCENE SUPERVISOR

In the event of an accident or medical incident of any size, your primary responsibility is to ENSURE that the victim(s) receive prompt and effective Triage, Treatment and Transportation.

- Conduct size-up of the incident (nature of accident, number type of resources involved, latitude and longitude location): notify incident communications center and supervisor, request assistance as needed.
- Order and coordinate medical and support response to the accident.
- Evaluate special needs (law enforcement, haz mat, etc.).
- Clear the command frequency if medical emergency; coordinate with incident communications and air attack for air medical transportation needs
- Preserve and photograph the scene for accident investigation.
- Remain aware of surroundings and the status of the main incident (delegate personnel to monitor the main fire) to ensure safety of medical treatment personnel.
- Until relieved, supervise and manage all personnel involved at the incident scene.
- **ENSURE THE MEDICAL INCIDENT REPORT IN THE INCIDENT ACTION PLAN IS BEING USED AND FOLLOWED.**

MEDICAL PLAN (ICS 206 WF)

1. Incident/Project Name		2. Operational Period						
Chuweah Creek Fire		Date/Time July 15-16, 2021 0600-0600						
3. Ambulance Services								
Name	Complete Address	Phone	Advanced Life Support (ALS)					
			Yes	No				
Colville Tribal EMS Nespelem, WA	410 10 th St. Nespelem, WA 99155	Dispatch 509-978-9323	x					
Lifeline Ambulance	912 Koala Ave Omak, WA 98841	Dispatch 509-663-8091	x					
4. Air Ambulance Services								
Name	Phone	Type of Aircraft & Capability						
Airlift Northwest	800-426-2430 or 911	Rotor in Wenatchee						
Life Flight Network	800-232-0911	2 Rotors, 1 Fixed Wing, Spokane						
5. Hospitals								
Name Complete Address	GPS Datum – WGS 84 Coordinate Standard Degrees Decimal Minutes DD° MM.MMM' N - Lat DD° MM.MMM' W - Long		Travel Time From ICP		Phone	Helipad		Level of Care Facility
	Lat:	Long:	Air	Gnd		Yes	No	
Coulee Medical Center 411 Fortuyn Rd Grand Coulee, WA 99133	44°56.5186'N	119°0.4333'W	20 Min	40 Min	509-633-1753	x		Level 4 Trauma
	VHF:							
	Confluence Health Hospital (Central Washington Hospital) 1201 S Miller St. Wenatchee, WA 98801	47°24.4340'N	120°19.3664'W	1 Hr				
VHF:			10 Min	30 Min				
Mid-Valley Hospital 912 Koala Ave Omak, WA 98841		48°23.8336'N	119°32.8758	40 Min	1 Hr	509-826-1760	x	
	VHF :			14min				
	Harborview Medical 325 9 th Ave Seattle, WA 98104	47°36.1897'N	122°19.4759'W	2 Hr	4 Hr			
VHF:			15 Min	30 Min				
6. Division Branch Group	Capability	Personnel						
Div D		Ambo 1 Lifeline (E-17)						
Div A/Z		EMT 2 (E-19) Brattner						
Div K/W								
Night Shift		(E-18) Landrum EMT 1						
7. Prepared By (Medical Unit Leader)	8. Date/Time	9. Reviewed By (Safety Officer)	10. Date/Time					
Diana Braun, Lee Venning <i>Diana Braun</i>	7-14-2021 1800	Jack Cates <i>Jack Cates</i>	7-14-2021 1800					

MEDICAL PLAN (ICS 206 WF)

Controlled Unclassified Information//Basic

Medical Incident Report

FOR A NON-EMERGENCY INCIDENT, WORK THROUGH CHAIN OF COMMAND TO REPORT AND TRANSPORT INJURED PERSONNEL AS NECESSARY.

FOR A MEDICAL EMERGENCY: IDENTIFY ON SCENE INCIDENT COMMANDER BY NAME AND POSITION AND ANNOUNCE "MEDICAL EMERGENCY" TO INITIATE RESPONSE FROM IMT COMMUNICATIONS/DISPATCH.

Use the following items to communicate situation to communications/dispatch.

1. CONTACT COMMUNICATIONS / DISPATCH (**Verify correct frequency prior to starting report**)

Ex: "Communications, Div. Alpha. Stand-by for Emergency Traffic."

2. INCIDENT STATUS: *Provide incident summary (including number of patients) and command structure.*

Ex: "Communications, I have a Red priority patient, unconscious, struck by a falling tree. Requesting air ambulance to Forest Road 1 at (Lat./Long.) This will be the Trout Meadow Medical, IC is TFLD Jones. EMT Smith is providing medical care."

Severity of Emergency / Transport Priority	<input type="checkbox"/> RED / PRIORITY 1 Life or limb threatening injury or illness. Evacuation need is IMMEDIATE <i>Ex: Unconscious, difficulty breathing, bleeding severely, 2° – 3° burns more than 4 palm sizes, heat stroke, disoriented.</i> <input type="checkbox"/> YELLOW / PRIORITY 2 Serious Injury or illness. Evacuation may be DELAYED if necessary. <i>Ex: Significant trauma, unable to walk, 2° – 3° burns not more than 1-3 palm sizes.</i> <input type="checkbox"/> GREEN / PRIORITY 3 Minor Injury or illness. Non-Emergency transport <i>Ex: Sprains, strains, minor heat-related illness.</i>	
Nature of Injury or Illness & Mechanism of Injury		<i>Brief Summary of Injury or Illness (Ex: Unconscious, Struck by Falling Tree)</i>
Transport Request		<i>Air Ambulance / Short Haul/Hoist Ground Ambulance / Other</i>
Patient Location		<i>Descriptive Location & Lat. / Long. (WGS84)</i>
Incident Name		<i>Geographic Name + "Medical" (Ex: Trout Meadow Medical)</i>
On-Scene Incident Commander		<i>Name of on-scene IC of Incident within an Incident (Ex: TFLD Jones)</i>
Patient Care		<i>Name of Care Provider (Ex: EMT Smith)</i>

3. INITIAL PATIENT ASSESSMENT: *Complete this section for each patient as applicable (start with the most severe patient)*

Patient Assessment: See IRPG page 106

Treatment:

4. TRANSPORT PLAN:

Evacuation Location (if different): *(Descriptive Location (drop point, intersection, etc.) or Lat. / Long.)* Patient's ETA to Evacuation Location:

Helispot / Extraction Site Size and Hazards:

5. ADDITIONAL RESOURCES / EQUIPMENT NEEDS:

Example: Paramedic/EMT, Crews, Immobilization Devices, AED, Oxygen, Trauma Bag, IV/Fluid(s), Splints, Rope rescue, Wheeled litter, HAZMAT, Extrication

6. COMMUNICATIONS: Identify State Air/Ground EMS Frequencies and Hospital Contacts as applicable

Function	Channel Name/Number	Receive (RX)	Tone/NAC *	Transmit (TX)	Tone/NAC *
COMMAND					
AIR-TO-GRND					
TACTICAL					

7. CONTINGENCY: **Considerations:** *If primary options fail, what actions can be implemented in conjunction with primary evacuation method? Be thinking ahead.*

8. ADDITIONAL INFORMATION: *Updates/Changes, etc.*

REMEMBER: Confirm ETA's of resources ordered. Act according to your level of training. Be Alert. Keep Calm. Think Clearly. Act Decisively.

Controlled Unclassified Information//Basic