

Incident Action Plan

Chuweah Creek Fire

July 16-17, 2021

Day / Night Operational Period 0600-0600

NOTES:



**SCAN TO
CHECK IN**

<https://bit.ly/2Rr545v>



**DOWNLOAD
IAP**

WA-COA-200084

N5RG [P] 1522
221 KPA




**DOWNLOAD
MAPS**



INCIDENT OBJECTIVES (ICS 202)

1. Incident Name:	2. Operational Period: DAY/NIGHT	
CHUWEAH CREEK FIRE	Date/Time From: 07/16/2021 0600 FRI	Date/Time To: 07/17/2021 0600 SAT
3. Objective(s):		
<p>Implement risk management practices for the safety of firefighters, other responders and the public as the first priority.</p> <p>Minimize impacts to private property, critical infrastructure, timber, cultural and natural resources including water, fish, wildlife, and range land.</p> <p>Maintain or improve positive community relationships and provide timely fire information to the public and cooperators.</p> <p>Establish and maintain all current COVID-19 mitigation protocols according to CDC guidelines.</p>		
4. Operational Period Command Emphasis:		
Implement direct suppression tactics where safe to do so to minimize fire size, protect timber values and private property.		
General Situational Awareness:		
Monitor the weather conditions and base all actions on current and expected fire behavior.		
5. Site Safety Plan Required? Yes <input type="checkbox"/> No <input checked="" type="checkbox"/>		
Approved Site Safety Plan(s) Located		
6. Incident Action Plan (the items checked below are included in this Incident Action Plan):		
<input checked="" type="checkbox"/> ICS 202 <input checked="" type="checkbox"/> ICS 203 <input checked="" type="checkbox"/> ICS 204 <input checked="" type="checkbox"/> ICS 205 <input type="checkbox"/> ICS 205A <input checked="" type="checkbox"/> ICS 206	<input type="checkbox"/> ICS 207 <input type="checkbox"/> ICS 208 <input checked="" type="checkbox"/> ICS 220 <input checked="" type="checkbox"/> Map/Chart <input checked="" type="checkbox"/> Weather Forecast/Tides/Currents	Other Attachments: <input checked="" type="checkbox"/> HR MESSAGE <input type="checkbox"/> _____ <input type="checkbox"/> _____ <input type="checkbox"/> _____
7. Prepared by: HOWARD JOHNSON Position/Title: PSC2	Signature: <i>Howard Johnson</i>	
8. Approved by Incident Commander:	Name: BOB SHINDELAR	Signature: <i>Bob Shindelar</i>
ICS 202	IAP Page	Date/Time: 07/15/2021 2000

ORGANIZATION ASSIGNMENT LIST (ICS 203)

1. Incident Name:		2. Operational Period: DAY/NIGHT	
CHUWEAH CREEK FIRE		Date/Time From: 07/16/2021 0600	FRI
		Date/Time To: 07/17/2021 0600	SAT
3. Incident Commander(s) and Command Staff:			
IC/UC	BOB SHINDELAR	FOOD UNIT	RUSS HOVEY ALEXANDER LILLA
SAFETY OFFICER	KEITH WAKEFIELD; JACK CATES TAIJA CORSO (T)	SECURITY UNIT	
INFORMATION OFFICER	MARY BEAN; ROLAND EMETAZ KATHY MOSES		
LIAISON OFFICER	SCOTT CRAWFORD		
7. Operations Section:			
HUMAN RESOURCE SPECIALIST	SUSIE MANEZES	OPS SECTION CHIEF	AARON ROWE
HEALTH LIAISON	LIV STECKER	PLANNING OPS	TONY ENGEL KURT RANTA (T)
4. Agency/Organization Representative(s):			
Agency/Organization	Name	DIVISION/GROUP	A/Z
			LARRY LEACH
		DIVISION/GROUP	D
			MATT KENNEDY
DNR AREP	PAT RYAN	DIVISION/GROUP	K/W
			BOB HINDS
BIA COLVILLE AGENCY AREP	JOSEPH HOLFORD	DIVISION/GROUP	NIGHT
			MICHAEL JACKSON
7b. Air Operations Branch:			
		AIR OPS BRANCH DIRECTOR	PAUL BALFOUR
		AIR ATTACK SUPERVISOR	TIM LYDA
		AIR SUPPORT SUPERVISOR	
		HELICOPTER COORDINATOR	
		AIR TANKER COORDINATOR	
5. Planning Section:			
CHIEF	HOWARD JOHNSON		
DEPUTY	ERIC BLACK		
RESOURCES UNIT	JILL JOHNSON		
SITUATION UNIT	DAVE WISCHER		
DEMOBILIZATION UNIT	MIKE HESTON		
TECHNOLOGY SUPPORT SPECIALIST	GEORGE JENKINS TODD MALLERY		
GIS SPECIALIST	SHAWN BUSHNELL MIKE TONKEL (T)		
INCIDENT METEOROLOGIST	BOB TOBIN		
8. Finance/Administration Section:			
		CHIEF	CHERI FULLER CHRISTINA GOEBEL
		TIME UNIT	CAROL LONG
		PROCUREMENT UNIT	MARK BOHNET
		COST UNIT	KATHLEEN HIGH
		ICPI	ROB HECHINGER
6. Logistics Section:			
CHIEF	DAN SOPTICH		
DEPUTY	KEVIN HAUGHTON		
SUPPLY UNIT	JOHN KAUPA		
FACILITIES UNIT	MIKE RENDON		
GROUND SUPPORT UNIT	DAVE HARSH		
COMMUNICATIONS UNIT	MISSY PARKER		
MEDICAL UNIT	EAMMON RYAN; DIANA BRAUN LEE VENNING (T)		
9. Prepared By:	Name: JILL JOHNSON	Position/Title: RESL	Signature: 
ICS 203	IAP Page	Date/Time: 07/15/2021 2000	

Fire Weather Forecast

FORECAST NO: 3
PREDICTION FOR: Friday
Shift Date: July 16-17, 2021 0600-0600
TIME AND DATE
FORECAST ISSUED: 7/15/2021 at 2000

INCIDENT: Chuweah Creek Fire
UNIT: Colville Reservation
SIGNED: Bob Tobin
Incident Meteorologist (IMET)

Weather Discussion: A deep upper level low pressure system will move south along the British Columbia coast today through Sunday. Several weak pieces of energy will eject off the low and through the Pac NW. This will result in temperatures cooling around 5 degrees both Friday and again Saturday, but also with shifting and gusty winds. By Sunday the low will be right on the coast. This will warm temperatures back into the 90s early next week, but also allow monsoon moisture to move into the region from the south. So expect to see cool, dry, and breezy conditions over the weekend. Then warming with a chance for thunderstorms by early next week.

WEATHER FORECAST:

Today:
SKY/WEATHER: Sunny.
High Temperature...78-83 above 2500 feet...85-90 below 2500 feet.
Min RH.....20-25% above 2500 feet...15-20% below 2500 feet
20-FOOT WINDS: Southwest 10 to 15 mph with gusts 20-25 mph after 1400.
CWR (>=0.10").... 0% **LAL....**1 **Haines Index...2 (Very Low)** **Mixing Height...8700 ft AGL**

Tonight:
Weather: Clear and a little cooler.
Low Temperature...55-60.
Max RH.....50-60%
20-FOOT WINDS: Southwest-west 8-10 mph after 2100 mph.
CWR (>=0.10")....0% **LAL...1.**

Saturday:
SKY/WEATHER: Sunny and still cool.
High Temperature...78-83 above 2500 feet...85-90 below 2500 feet.
Min RH.....20-25% above 2500 feet...15-20% below 2500 feet
20-FOOT WINDS: South-southwest winds 10-12 mph with gusts to 20 mph.
CWR (>=0.10")....0% **LAL....1** **Haines Index...4 (Low)** **Mixing Height...7800 ft AGL**

Extended Outlook
Sunday...Sunny. Low: 60-65...High: 85-95. Min RH: 15-20% Winds: southwest 8-10 mph with gusts to 20 mph.
Monday... Mostly sunny...a chance of thunderstorms Monday night. Low: 60-65...High: 85-95. Min RH: 12-17% Winds: South-southwest 8-12 mph.

FIRE BEHAVIOR FORECAST

FORECAST NUMBER: 3	TYPE OF FIRE: Wildland
FIRE NAME: Chuweah Creek	OPERATIONAL PERIOD: July 16-17, 2021 0600-0600
DATE ISSUED: July 15, 2021	TIME ISSUED: 1800
UNIT: WA-COA	Don Strand FBAN

INPUTS

WEATHER SUMMARY: Sunny and cooler today. Max Temps near 90 with min RH near 15%. Winds SW 10-15 mph gusts 20 to 25 mph after 1400 hours.

OUTPUTS

FIRE BEHAVIOR

GENERAL: Fuels are very dry. Some higher elevation shrub and conifers still have some greenness. Continued active fire behavior today, especially in the afternoon in those isolated areas where fuels are exposed to afternoon and evening winds. Energy Release Component at Nespelem and Gold Mountain RAWS' are in the 97+ percentile. Fuel moistures are; 1 hour min. 3%, 10-hour min. 3-4%, 100-hour min 4-5%. 1000-hour fuel moistures are 6-7%. Fuels are mixed grass, brush, conifer with grass and brush understory with areas of light logging slash.

Probability of Ignition will approach 90% today. Maximum spotting distance approaching 0.2 mile or more with afternoon winds. Expect continued fire spread today. Single and group torching likely with potential for periodic runs in afternoon continuing into evening.

Potential Rates of Spread and Flame Lengths calculated using forecasted weather and NFDRS fuels data from Nespelem and Gold Mountain RAWS

	FM 2 Grass	FM 5 Brush	FM 9 Needle litter	FM 10 Heavy litter
Rate of Spread	120 Chain/Hr.	80 Chain/Hr.	24 Chain/Hr.	27 Chains/Hr.
Flame Length	12'	10'	4'	9'

Specific:

DIV: D. Expect fire to back and flank with occasional short upslope runs. In limited areas where afternoon winds align with topography, potential for short torching runs exist north of Cache Creek Road. In areas east of Keller Butte Road, expect backing and flanking fire behavior.

New addition to division: Fire is in a harvest unit with pockets of pine regeneration, grass and brush. Fire is continuing to clean up surface debris and consume unburned interior fuels. Expect squirrely winds at times to contribute possible flare ups.

DIV: K/W. Expect areas unburned areas west of Keller Butte Road to continue to clean up with surface fire spread with torching upslope runs. Watch for any hold over spots from yesterday's fire activity.

AIR OPERATIONS: Watch for turbulence in the complex terrain.

SAFETY

Pay attention to fire weakened trees and snags.

Continue to monitor for hold over spots as well as any new spots. A spot fire in light fuels can develop very quickly and spread rapidly.

Strong Inversion this morning, expect increasing fire behavior after lifts around 1100 hours.

Watch for increased fire activity with wind slope alignment.

Safety Message

July 16-17, 2021 0600-0600

INCIDENT: Chuweah Creek

OPERATIONAL PERIOD: 0600-1800

TOPICS:

DRIVING

Driving safety is critical; some areas on the incident have narrow roads with limited sight distance and minimal turnouts. Drive with your lights on. Accidents happen fast. We are in a high traffic/high incident rate area. Limit speeds and maintain a longer vehicle spacing and keep awareness of other vehicles high. Always chock tires when parked and have a spotter when backing. Limit speeds at Basecamp to less than **5 mph**.

MANAGING THE MAYDAY

The four (4) W's of sizeup: While we fight fires of varying complexities throughout the year, we rarely (and thankfully) deal with managing the EMS incident from beginning to end. This can be a daunting and stressful task for personnel. While the Emergency Plan is a useful tool, the four (4) W's is a simple, easy and provides you with a guide to establish a majority of the pertinent information needed to successfully manage the IWI.

"W"hat do I have?

"W"hat am I doing?

"W"hat do I need?

"W"ho is in command?

We call this the 30 second blueprint for success. While it may not answer all the questions needed, it certainly gets you off on the right foot.



****KEEP UP ON PROPER HYDRATION BEFORE, DURING, AND AFTER SHIFT****

SAFETY OFFICER: Jack Cates, Keith Wakefield, Taija Corso (T)

Deliberate Risk Assessment-Hazard Summary

July 16-17, 2021 0600-0600

Hazard	Mitigation	Post Risk
Viral Transmission Mitigations, Communicable Disease	Maintain awareness of health, perform self-checks, maintain social distancing, and wear face coverings in accordance with CDC recommendations. Report and isolate if not feeling well.	Low
Extraction Time	Identify medivac sites and helispots. Initiate ground transport to accident site. Identify EMT/EMTP from resources assigned to division. Provide line qualified paramedics to each division as available. Review IWI protocol to ensure familiarity. Utilize civilian medivac as treatment/timing dictates. Evaluate on-going need for repositioning medical personnel.	High
Steep Terrain/Gravity	Do not work crews above or below each other. Post lookouts for rolling material. Watch footing in loose soil, rock and around vegetation. Do not work below heavy equipment. Scout and identify travel routes. Establish LCES.	Moderate
Snags	Use avoidance to limit exposure time. Snag ahead to avoid exposure. Use qualified fallers, blasting, or alternate methods if needed. Conduct on-going risk analysis of all work areas. Follow Hazard Tree Safety Guidelines (IRPG page 22).	High
Communication	Evaluate for dead zones prior to engagement. Utilize human repeaters as needed. Ensure accountability of resources in problem areas.	Moderate
Physical Factors	Maintain hydration schedule. Closely monitor work rate and implement rest periods. Maintain nutrition. Ensure adequate work/rest.	Moderate
Environmental Factors	Assign medical personnel to camp. Assess for known allergies and report to medical personnel. Obtain Bee Bopper/wasp spray and yellow jacket traps. Maintain an awareness of livestock. Keep an eye out for wildlife including bears, cougars, and rattlesnakes.	Moderate
Fire Behavior	Be aware of burn windows and weather impacts and min/max RH for flashy fuels/local conditions. Report changes to FBAN and IMET.	Moderate
Unburned Fuels/Firing Ops	Establish LCES. Ensure management action points are implemented and followed. Weather updates as needed during burning operations. Locate indirect firelines to minimize the amount of unburned fuels. Follow Interagency Ignition Guide. Ensure communications between all firing operations. Establish road security at all firing sites. Follow approved firing plan for unburned fuels.	Moderate
Transportation	Signing of all incident roads that provide access to divisions. Daily updated travel plan maps. Practice defensive driving. In local communities obey the posted speed limits. Use reader boards to control entry as needed. Identify and evaluate contingency and alternate escape and travel routes.	High
Aircraft	Utilize Air Attack. Ensure all resources are a safe distance from all bucket and retardant drops. Establish LCES. Utilize air to ground primary radio channel. Reference IRPG (Safe aircraft operations pg. 56-58). Ensure IA resources have coordination with unassigned local air resources to provide deconfliction.	High
Heavy Equipment	Post lookouts around equipment work areas. Establish communications with equipment boss and operator. Do not work down slope from equipment.	High
Transmission Lines	Maintain one span radius from any downed line or compromised pole, be aware of smoke conductivity, report any downed lines or burning poles. Maintain awareness of utility repair crews working in and adjacent to the fire perimeter.	High
Public Interaction	Place new road closures as necessary and maintain current closures. Maintain awareness of evacuation areas and provide accurate information dissemination.	Low
Initial Attack	Ensure identified IA resources are briefed of expectations and ensure communication plan is provided. Ensure resources are briefed on IA command structure. Provide identified crews with area maps.	Moderate

Division/Group Assignment List (ICS 204 WF)
Controlled Unclassified Information//Basic

1. Incident Name:			3.			
CHUWEAH CREEK FIRE			Branch:		Division/Group	
2. Operational Period: DAY/NIGHT					A/Z	
Date/Time From: 07/16/2021 0600 FRI		Date/Time To: 07/17/2021 0600 SAT				
4. Operations Personnel						
OPERATIONS CHIEF		AARON ROWE; TONY ENGEL KURT RANTA (T)		DIVISION/GROUP SUPERVISOR		LARRY LEACH
AIR ATTACK SUPERVISOR		PAUL BALFOUR		SAFETY OFFICER		KEITH WAKEFIELD JACK CATES; TAIJA CORSO (T)
5. Resources Assigned this Period						
Strike Team / Task Force / Resource Designator		LWD	Leader	Number Persons	Drop Off PT./Time	Pick Up PT./Time
O-1.55 SOF2		07/27	DON WALLER	1	ICP/0600	ICP/1800
E-6 ENG5 DNR SO 7202		07/26	AUSTIN VARGAS	4	ICP/0600	ICP/1800
E-11 ENG6 SILVER TIP FORESTRY 21		07/26	CASEY LOUIE	3	ICP/0600	ICP/1800
E-76 WTS2 BIA		07/26		1	ICP/0600	ICP/1800
E-19 EMT 2		07/27	TOM BRATTNER	1	ICP/0600	ICP/1800
INSURANCE ENGINE RAINIER 10				2		
INSURANCE ENGINE 5433				2		
INSURANCE ENGINE SGS7				2		
6. Control Operations/Work Assignments:						
<p>TASK - Patrol structures and fire perimeter. PURPOSE - Protect property and resources. END STATE - Fire is contained within the current perimeter and the threat to structures is limited.</p>						
7. Special Instructions:						
Utilize direct line tactics where possible. Burn out indirect line as needed.						
8. Division/Group Communication Summary						
Function	Channel	RX Frequency N/W	RX Tone/NAC	TX Frequency N/W	TX Tone/NAC	Mode
COMMAND	9	169.7125	136.5	164.1625	123.0	A
COMMAND	10	169.7125	136.5	164.1625	100.0	A
TACTICAL	1	168.0500	123.0	168.0500	123.0	A
AIR TO GROUND	14	171.6750		171.6750		A
9. Prepared By (Resource Unit Leader)			Approved By (Planning Section Chief)		Date	Time
JILL JOHNSON			HOWARD JOHNSON		07/15/2021	2000

Division/Group Assignment List (ICS 204 WF)
Controlled Unclassified Information//Basic

1. Incident Name:				3.		
CHUWEAH CREEK FIRE				Branch:	Division/Group D	
2. Operational Period: DAY/NIGHT						
Date/Time From: 07/16/2021 0600 FRI		Date/Time To: 07/17/2021 0600 SAT				
4. Operations Personnel						
OPERATIONS CHIEF		AARON ROWE; TONY ENGEL KURT RANTA (T)		DIVISION/GROUP SUPERVISOR		MATT KENNEDY
AIR ATTACK SUPERVISOR		PAUL BALFOUR		SAFETY OFFICER		KEITH WAKEFIELD JACK CATES; TAIJA CORSO (T)
5. Resources Assigned this Period						
Strike Team / Task Force / Resource Designator		LWD	Leader	Number Persons	Drop Off PT./Time	Pick Up PT./Time
O-1.67 SOF2		07/27	JOSH NORTHRUP	1	ICP/0600	ICP/1800
O-46 SOFR		07/29	DAN GARNER	1	ICP/0600	ICP/1800
O- TFLD		07/28	GREG ANDERSON	1	ICP/0600	ICP/1800
O-94 HEQB		07/28	NICHOLAS HARPER	1	ICP/0600	ICP/1800
O-95 HEQB (T)		07/29	ASA RAY	1	ICP/0600	ICP/1800
C-7 HC2 SUNSET FORESTRY 1		07/29	ADAN MEJIA	20	ICP/0600	ICP/1800
E-3 ENG5 DNR SO 7204		07/27	LOGAN KOVALENKO	4	ICP/0600	ICP/1800
E-5 ENG5 DNR SO 7206		07/27	JADON MCCABE	4	ICP/0600	ICP/1800
E-9 ENG6 SILVER TIP FORESTRY 21		07/26	JEREMY TAYLOR	3	ICP/0600	ICP/1800
E-14 ENG6 BLACK PINE		07/20	BEATTEY, JOE	3	ICP/0600	ICP/1800
E-16 ENG6 THE GENERAL BR 102		07/20	ADAM BENKEL	2	ICP/0600	ICP/1800
E-87 SKG3 SKIDGINE		07/28	JACK OBRYAN	2	ICP/0600	ICP/1800
E-1 WTS2 INNES WOOD PRODUCTS		07/27	SCOTT DAWSON	1	ICP/0600	ICP/1800
E-82 WTS2 ASPEN MTN RESOURCES 10		07/29	RANDY OWEN	1	ICP/0600	ICP/1800
E-83 WTS2 ASPEN MTN RESOURCES 14		07/29	WARREN HANSEN	1	ICP/0600	ICP/1800
E-23 DOZ3 TIGER TRUCKING			CODY HASTINGS	2	ICP/0600	ICP/1800
8. Division/Group Communication Summary						
Function	Channel	RX Frequency N/W	RX Tone/NAC	TX Frequency N/W	TX Tone/NAC	Mode
COMMAND	9	169.7125	136.5	164.1625	123.0	A
TACTICAL	2	168.2000	123.0	168.2000	123.0	A
AIR TO GROUND	14	171.6750		171.6750		A
9. Prepared By (Resource Unit Leader)			Approved By (Planning Section Chief)		Date	Time
JILL JOHNSON			HOWARD JOHNSON		07/15/2021	2000

Division/Group Assignment List (ICS 204 WF)
Controlled Unclassified Information//Basic

1. Incident Name:			3.			
CHUWEAH CREEK FIRE			Branch:		Division/Group	
2. Operational Period: DAY/NIGHT					D	
Date/Time From: 07/16/2021 0600 FRI		Date/Time To: 07/17/2021 0600 SAT				
4. Operations Personnel						
OPERATIONS CHIEF		AARON ROWE; TONY ENGEL KURT RANTA (T)		DIVISION/GROUP SUPERVISOR		MATT KENNEDY
AIR ATTACK SUPERVISOR		PAUL BALFOUR		SAFETY OFFICER		KEITH WAKEFIELD JACK CATES; TAIJA CORSO (T)
5. Resources Assigned this Period						
Strike Team / Task Force / Resource Designator		LWD	Leader	Number Persons	Drop Off PT./Time	Pick Up PT./Time
E- DOZ3 MCCLURE EQUIP			GARY MCCLURE	2	ICP/0600	ICP/1800
E-56 UTV			-- NONE --		ICP/0600	ICP/1800
E-57 UTV			-- NONE --		ICP/0600	ICP/1800
E-17 ALS AMBU LIFELINE		07/27	DALE SMITH	2	ICP/0600	ICP/1800
6. Control Operations/Work Assignments:						
<p>TASK - Anchor and flank the fire perimeter from A/D division break, south to the D/K division break. Scout and contain Incident 90.</p> <p>PURPOSE - Protect resources & property north and east of fire perimeter.</p> <p>END STATE - Fire is contained north of Cache Creek Rd and south toward the Div K break. Structures secured south of Cache Creek Rd.</p>						
7. Special Instructions:						
Utilize direct line tactics where possible. Burn out indirect line as needed.						
8. Division/Group Communication Summary						
Function	Channel	RX Frequency N/W	RX Tone/NAC	TX Frequency N/W	TX Tone/NAC	Mode
COMMAND	9	169.7125	136.5	164.1625	123.0	A
TACTICAL	2	168.2000	123.0	168.2000	123.0	A
AIR TO GROUND	14	171.6750		171.6750		A
9. Prepared By (Resource Unit Leader)			Approved By (Planning Section Chief)		Date	Time
JILL JOHNSON			HOWARD JOHNSON		07/15/2021	2000

Division/Group Assignment List (ICS 204 WF)
Controlled Unclassified Information//Basic

1. Incident Name:			3.			
CHUWEAH CREEK FIRE			Branch:		Division/Group	
2. Operational Period: DAY/NIGHT					K/W	
Date/Time From: 07/16/2021 0600 FRI		Date/Time To: 07/17/2021 0600 SAT				
4. Operations Personnel						
OPERATIONS CHIEF		AARON ROWE; TONY ENGEL KURT RANTA (T)		DIVISION/GROUP SUPERVISOR		BOB HINDS
AIR ATTACK SUPERVISOR		PAUL BALFOUR		SAFETY OFFICER		KEITH WAKEFIELD JACK CATES; TAIJA CORSO (T)
5. Resources Assigned this Period						
Strike Team / Task Force / Resource Designator		LWD	Leader	Number Persons	Drop Off PT./Time	Pick Up PT./Time
O-1.66 SOF2		07/27	JOHN BARNES	1	ICP/0600	ICP/1800
O-46 SOFR		07/29	DAN GARNER	1	ICP/0600	ICP/1800
O-112 TFLD (T)		07/29	GARY HUGHES	1	ICP/0600	ICP/1800
O- STEQ (T)			RANDY BURKE	1	ICP/0600	ICP/1800
C-4 HC2I RSF - NWR1			JOSEPH WELBURN	20	ICP/0600	ICP/1800
E-4 ENG5 DNR HI 7104		07/27	ENRIQUE ORTEGA	4	ICP/0600	ICP/1800
E-88 SKG3 SKIDGINE		07/28	SCOTT SHINALL	2	ICP/0600	ICP/1800
E-84 WTS2 RAINS CONTRACTING 3		07/29	JIM HUTTON	1	ICP/0600	ICP/1800
E-24 DOZ3 JONES LOGGING			JASON JONES	2	ICP/0600	ICP/1800
E-77 DOZ3 BIA			JIM PHILLIPS	2	ICP/0600	ICP/1800
6. Control Operations/Work Assignments:						
TASK - Anchor and flank the fire perimeter from Z/W division break to the K/D division break. PURPOSE - Protect resources and property southeast of the fire. END STATE - The fire is contained north of Buffalo Lake and west of Keller Butte Rd.						
7. Special Instructions:						
Utilize direct line tactics where possible. Burn out indirect line as needed.						
8. Division/Group Communication Summary						
Function	Channel	RX Frequency N/W	RX Tone/NAC	TX Frequency N/W	TX Tone/NAC	Mode
COMMAND	9	169.7125	136.5	164.1625	123.0	A
TACTICAL	3	168.6000	123.0	168.6000	123.0	A
AIR TO GROUND	14	171.6750		171.6750		A
9. Prepared By (Resource Unit Leader)			Approved By (Planning Section Chief)		Date	Time
JILL JOHNSON			HOWARD JOHNSON		07/15/2021	2000

Division/Group Assignment List (ICS 204 WF)
Controlled Unclassified Information//Basic

1. Incident Name:				3.		
CHUWEAH CREEK FIRE				Branch:	Division/Group NIGHT	
2. Operational Period: DAY/NIGHT						
Date/Time From: 07/16/2021 0600 FRI		Date/Time To: 07/17/2021 0600 SAT				
4. Operations Personnel						
OPERATIONS CHIEF		AARON ROWE; TONY ENGEL KURT RANTA (T)		DIVISION/GROUP SUPERVISOR		MICHAEL JACKSON
AIR ATTACK SUPERVISOR		PAUL BALFOUR		SAFETY OFFICER		JACK CATES ; KEITH WAKEFIELD TAIJA CORSO (T)
5. Resources Assigned this Period						
Strike Team / Task Force / Resource Designator		LWD	Leader	Number Persons	Drop Off PT./Time	Pick Up PT./Time
O-117 SOF2		07/29	DEAN KIEFER	1	ICP/1800	ICP/0600
O-3 TFLD		07/21	LANNIE PEDERSEN	1	ICP/1800	ICP/0600
O-4 TFLD (T)		07/21	ROSS AVICHOUSER	1	ICP/1800	ICP/0600
O-49 TFLD			CODY DESUATEL	1	ICP/1800	ICP/0600
C-3 HC2I HIGHLANDS		07/19	SETH SCHERTENLEIB	20	ICP/1800	ICP/0600
E-7 ENG6 NORTHERN COLUMBIA REFOR		07/20	LENORD DENISON	2	ICP/1800	ICP/0600
E-10 ENG6 EARLY WINTERS		07/20	CHRIS SURFACE	3	ICP/1800	ICP/0600
E-12 ENG6 AEGIS LOGISTICS		07/20	ROY VARENEY	3	ICP/1800	ICP/0600
E-13 ENG6 AEGIS LOGISTICS		07/27	KERRI HENDRIX	3	ICP/1800	ICP/0600
E-15 ENG6 AMERICAN FIREFIGHTER CO		07/20	MIKE RIDEOUT	3	ICP/1800	ICP/0600
E-20 ENG5 DNR HI 7103		07/26	MATT SMITT	4	ICP/1800	ICP/0600
E-21 ENG5 DNR HI 7109		07/26	BROCK HENNEMAN	5	ICP/1800	ICP/0600
E-53 WTS3 JRD CONSTRUCTION		07/28	DENNIS PAYNE	1	ICP/1800	ICP/0600
E-76 WTS2 BIA			COVINGTON	1	ICP/1800	ICP/0600
E-22 DOZ3 PUMPER CAT				2	ICP/1800	ICP/0600
E-77 DOZ3 BIA			JIM PHILLIPS	2	ICP/1800	ICP/0600
E- DOZ3 MCCLURE				2	ICP/1800	ICP/0600
8. Division/Group Communication Summary						
Function	Channel	RX Frequency N/W	RX Tone/NAC	TX Frequency N/W	TX Tone/NAC	Mode
COMMAND	9	169.7125	136.5	164.1625	123.0	A
COMMAND	10	169.7125	136.5	164.1625	100.0	A
TACTICAL	4	166.7250	123.0	166.7250	123.0	A
AIR TO GROUND	14	171.6750		171.6750		A
9. Prepared By (Resource Unit Leader)			Approved By (Planning Section Chief)		Date	Time
JILL JOHNSON			HOWARD JOHNSON		07/15/2021	2000

Division/Group Assignment List (ICS 204 WF)
Controlled Unclassified Information//Basic

1. Incident Name:				3.		
CHUWEAH CREEK FIRE				Branch:	Division/Group NIGHT	
2. Operational Period: DAY/NIGHT						
Date/Time From: 07/16/2021 0600 FRI		Date/Time To: 07/17/2021 0600 SAT				
4. Operations Personnel						
OPERATIONS CHIEF		AARON ROWE; TONY ENGEL KURT RANTA (T)		DIVISION/GROUP SUPERVISOR		MICHAEL JACKSON
AIR ATTACK SUPERVISOR		PAUL BALFOUR		SAFETY OFFICER		JACK CATES ; KEITH WAKEFIELD TAIJA CORSO (T)
5. Resources Assigned this Period						
Strike Team / Task Force / Resource Designator		LWD	Leader	Number Persons	Drop Off PT./Time	Pick Up PT./Time
E-92 ALS AMBU 2		07/29	TAYLOR MORROW	2	ICP/1800	ICP/0600
E-18 EMT1		07/27	MARA LANDRUM	1	ICP/1800	ICP/0600
O-93 EMPF MEDIC 3		07/28	BRIAN SPENDLOVE	1	ICP/1800	ICP/0600
6. Control Operations/Work Assignments:						
<p>Div A/Z TASK - Patrol structures and fire perimeter. PURPOSE - Protect property and resources. END STATE - Fire is contained within the current perimeter and the threat to structures is limited.</p> <p>Div D TASK - Anchor and flank the fire perimeter from A/D division break, south to the D/K division break. PURPOSE - Protect resources & property north and east of fire perimeter. END STATE - Anchor point established on Cache Creek Rd and structures are protected.</p> <p>Div K/W TASK - Anchor and flank the fire perimeter from Z/W division break to the K/D division break. PURPOSE - Protect resources and property southeast of the fire. END STATE - The fire is contained north of Buffalo Lake and west of Keller Butte Rd.</p>						
7. Special Instructions:						
Utilize direct line tactics where possible. Burn out indirect line as needed.						
8. Division/Group Communication Summary						
Function	Channel	RX Frequency N/W	RX Tone/NAC	TX Frequency N/W	TX Tone/NAC	Mode
COMMAND	9	169.7125	136.5	164.1625	123.0	A
COMMAND	10	169.7125	136.5	164.1625	100.0	A
TACTICAL	4	166.7250	123.0	166.7250	123.0	A
AIR TO GROUND	14	171.6750		171.6750		A
9. Prepared By (Resource Unit Leader)			Approved By (Planning Section Chief)		Date	Time
JILL JOHNSON			HOWARD JOHNSON		07/15/2021	2000

AIR OPERATIONS SUMMARY

PREPARED BY: Paul Balfour

PREPARED DATE/TIME: July 15,1800 hrs

INCIDENT NAME CHUWEAH CR	2. OPERATIONAL PERIOD: Date: July 16-17, 2021 0600-0600 Helibase Start Time: 0830 End Time: 2000 Sunrise: 0513 Sunset: 2051 (Times valid for Nespelem)
3. REMARKS (Safety Notes, Hazards, Air Operations Special Equipment, etc.): General Aviation, See & Avoid Bucket work, Retardant drops: ensure area is clear of ground personnel before dropping; watch for wires; be aware of potential for turbulence at ridge tops, saddles, canyons, etc *** BE AWARE OF FATIGUE, TAKE LONGER BREAKS WHEN FLYING IN SMOKEY CONDITIONS. *** Report all TFR intrusions to Air Operations, Air Support or Helibase as soon as possible.	4. MEDEVAC A/C: Contact Mt Tolman Fire Center for closes availability 509-634-3100
5. TFR #1/8801 (A48) Freq: 118.400 Will Change 7/16/21 by 1200hrs	

6. PERSONNEL	LWD	Phone	7. FREQUENCIES	AM	FM	8. FIXED-WING	# Avail / Type/ Make-Model / FAA N# / Base(s)
AOBD: Paul Balfour O-1.36	7/16	509-993-8739	AIR/AIR Primary (A-6)	118.4000		Lead Planes, Air Tankers, & SEATs	Order as needed through ATGS/AOBD or Mt Tolman Dispatch
ASGS: Tim Lyda O-1.37		541-761-2676	AIR/AIR Secondary (A-7)	12402500			
HEBM:			AIR/GROUND Primary (A-4)		171.6750	ATGS Aircraft	AA Michelle Moore 208-608-6638 690 Commander N364WA, IA AA Matt Woosley 509-322-5260 500 Commander N531SA (A-54) LATs Order through Air Attack/AOBD Mt Tolman Dispatch
HEMG:			AIR/GROUND Secondary (A-5)		171.7500		
ATGS: Matt Woosley O-101		509-322-5260	DNR-AIR/GROUND IA		159.270 T-103.5		
ATGS:			AIR/Ground Ch 51 IA		168.3125		
Mt Tolman: Deb Coudell		509-571-4133	UNICOM OMAK	122.8		NOTES:	
			DECK				

9. HELICOPTERS

FAA N#	TY	MAKE/MODEL	BASE	START	AVAIL	REMARKS	FAA N#	TY	MAKE/MODEL	BASE	START	AVAIL	REMARKS
N448JS	1	S-61	OMK	0830	0900	Long Line Bucket	NOCB	1	K MAX	OMK	1000	1000	DNR Lend/Lease Only

INCIDENT RADIO COMMUNICATIONS PLAN (ICS 205)

Controlled Unclassified Information//Basic

1. Incident Name:	2. Date/Time Prepared:	3. Operational Period: DAY/NIGHT	
CHUWEAH CREEK FIRE	Date: 07/15/2021 Time: 2000	Date/Time From: 07/16/2021 0600 FRI	Date/Time To: 07/17/2021 0600 SAT

4. Basic Radio Channel Use:

Zone Group	Ch #	Function	Channel Name/Trunked Radio System Talkgroup	Assignment	RX Freq	RX Tone/NAC	TX Freq	TX Tone/NAC	Mode (A,D, or M)	Remarks
	1	TACTICAL	TAC 1	DIV A / Z	168.0500	123.0	168.0500	123.0	A	
	2	TACTICAL	TAC 2	DIV D	168.2000	123.0	168.2000	123.0	A	
	3	TACTICAL	TAC 3	DIV K / W	168.6000	123.0	168.6000	123.0	A	
	4	TACTICAL	TAC 4	NIGHT	166.7250	123.0	166.7250	123.0	A	
	5	TACTICAL	TAC 5	RESERVED	166.7750	123.0	166.7750	123.0	A	NOT IN SERVICE
	6	TACTICAL	TAC 6	RESERVED	168.2500	123.0	168.2500	123.0	A	NOT IN SERVICE
	7	COMMAND	CMD 7	EAST SIDE	170.4500	123.0	168.1000	123.0	A	AT KELLER LO
	8	COMMAND	CMD 8	WEST SIDE	169.7250	88.5	164.2500	100.0	A	FIRE A - MOSES MTN
	9	COMMAND	KELLER	EAST SIDE	169.7125	136.5	164.1625	123.0	A	FIRE B - KELLER LO
	10	COMMAND	MOSES	WEST SIDE	169.7125	136.5	164.1625	100.0	A	FIRE B - MOSES MTN
	11	TACTICAL	WA REDNET	IA	153.8300		153.8300		A	IA ONLY
	12	TACTICAL	FIRE C TAC	IA	166.9750	151.4	166.9750	151.4	A	IA ONLY
	13	AIR TO GROUND	A/G 51	IA	168.3125		168.3125		A	IA ONLY
	14	AIR TO GROUND	A/G PRI		171.6750		171.6750		A	AIR TO GROUND PRIMARY
	15	AIR TO GROUND	A/G SEC		171.7500		171.7500		A	AIR TO GROUND SECONDARY
	16	AIR GUARD	AIRGUARD	AIRGUARD	168.6250		168.6250	110.9	A	EMERGENCY AIR TRAFFIC ONLY

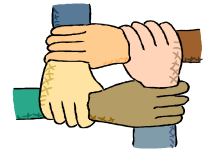
5. Special Instructions:

6. Prepared By (Communications Unit Leader)	Name: MISSY PARKER	Signature: <i>Missy Parker</i>
ICS 205	IAP Page	Date/Time: 07/15/2021 2000

Controlled Unclassified Information//Basic



Human Resource Message



Chuweah Creek Fire
July 16, 2021

Mutual Respect:

- Everyone has the right to work in a harassment-free environment where people treat one another with dignity, equity, courtesy, and respect.
- Everyone has the responsibility to behave in a manner that treats people with dignity, equity, courtesy, and respect.
- There is zero tolerance for inappropriate behavior of any kind; including the possession or use of illegal drugs or alcohol.
- Remember safety is foremost in everything we do, and it is both an individual and a team responsibility. Stay focused on the task at hand, focus on the fundamentals, keep team members informed, respectfully share your viewpoint, listen to what others are saying and be sure to ask questions if you are unsure of any assignment.

QUIET TIME REMINDER: Please observe quiet hours from 2200 to 0600 hours.

- When using the Porta Johns, please do not let the door slam.
- Please park your vehicle(s) away from the sleeping areas.
- Please do not carry-on cell phone conversations in your tent & or hold conversations with co-workers during these hours in the sleeping areas.

MUTUAL RESPECT, YOU MAKE THE DIFFERENCE!

Be safe, stay cool, and have a good day!



Susie Manezes, PNW-Team 12- (HRSP) Contact Number: 602-571-9327

LOGISTICS MESSAGE

KITCHEN

Breakfast 0500 – 0900

Dinner 1700-2200

Lunches and ice are available at the refrigerated trailers.

SHOWERS

Open hours

0500 - 1200 and 1400 - 2200

GROUND SUPPORT

Ground Support hours **0600-2200**

Attention WEX card users... Fuel is available in Nespelem at Jacksons Service Station. See ground support for directions.

SUPPLY

Cache hours **0600-2200**

Cache orders prior to 0900 should be delivered same day.



Chuweah Creek Fire Finance

FSC2 – Cheri Fuller, FSC2 (T) Christina Goebel

Email : 2021.chuweahcreek.finance@firenet.gov

Phone: 425-495-3420

Hours of operation 0530 – 2200

If you haven't checked in with finance, you need to do so if you would like to be paid. If you were part of the initial attack, please come see us ASAP.

Need to see the following ...

E-12

E- 22

E-23

Thank you and remember to be safe

Incident Maps

Maps are not included in the IAP document due to size and page count. For detailed Operations, Transportation and other maps, [click here](#) or scan QR code:



Send Map Updates

Send map updates by email to 2021.chuweahcreek.situation@firenet.gov or text/call the Situation Unit at 360-584-3373. Make sure to include your name, position and explanation of the update you send.

How to correctly send data from Avenza

1. Open the map in Avenza.
2. Click the pin with three lines near the lower-right corner.
3. *iPhone*: In the lower right, click the square with up arrow. From the pop-up menu, choose Export to Others.

Android: In the lower right, click the circle with three lines. Click the pop-up circle with up arrow.

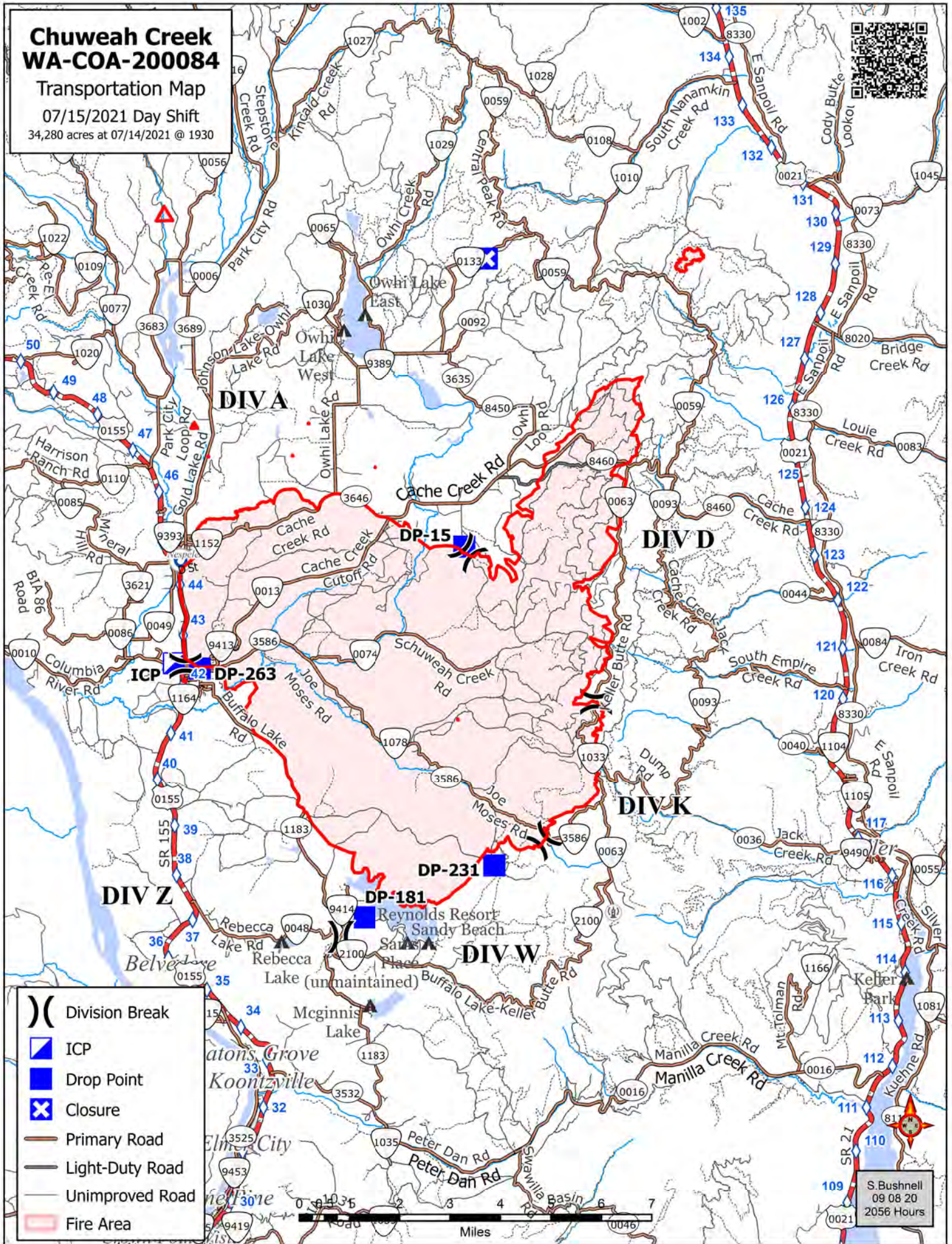
4. Set these options:
 - a. Filename – leave alone
 - b. Export Format – choose SHP, GPX or XML
 - c. Data – all features
 - d. Image size – no image
5. Click the Export button in the upper-right corner.
6. When the export is ready, choose your Mail application.
7. Send the email to 2021.chuweahcreek.situation@firenet.gov.
8. Your email needs to include your name and position
9. Your email needs to include an explanation of the data you are sending.

Chuweah Creek WA-COA-200084

Transportation Map

07/15/2021 Day Shift

34,280 acres at 07/14/2021 @ 1930



COVID-19 MITIGATIONS FOR CHUWEAH FIRE

- Fully vaccinated individuals are not required to wear masks in camp or at ICP.
- Individuals who have not been vaccinated should continue to wear masks and observe social distancing while gathered with others outside of their module and during ANY indoor activities.
- Conduct daily verbal screening checks within crews, report any COVID-like symptoms to your direct supervisor. Supervisors should report any positive symptoms to the Medical Unit for next steps.
- To the extent possible, observe “Module as One” practices between crews, allowing for safe distance and minimizing close contact with other crews and resources.
- Limit traffic inside of the ICP building to Incident Management Team members and essential visitors as much as possible.
- Observe social distancing standards while waiting in line for food and limit contact with others outside of your crew in the food service line. If possible, send crew representatives to pick up meals.
- Practice good personal hygiene, wash hands frequently and disinfect high-traffic areas on a regular basis.
- Limit close contact between firefighters and the public as much as possible to prevent exposure and spread.

EMERGENCY PLAN

INCIDENT WITHIN AN INCIDENT

ON SCENE SUPERVISOR

In the event of an accident or medical incident of any size, your primary responsibility is to ENSURE that the victim(s) receive prompt and effective Triage, Treatment and Transportation.

- Conduct size-up of the incident (nature of accident, number type of resources involved, latitude and longitude location): notify incident communications center and supervisor, request assistance as needed.
- Order and coordinate medical and support response to the accident.
- Evaluate special needs (law enforcement, haz mat, etc.).
- Clear the command frequency if medical emergency; coordinate with incident communications and air attack for air medical transportation needs
- Preserve and photograph the scene for accident investigation.
- Remain aware of surroundings and the status of the main incident (delegate personnel to monitor the main fire) to ensure safety of medical treatment personnel.
- Until relieved, supervise and manage all personnel involved at the incident scene.
- **ENSURE THE MEDICAL INCIDENT REPORT IN THE INCIDENT ACTION PLAN IS BEING USED AND FOLLOWED.**

MEDICAL PLAN (ICS 206 WF)

1. Incident/Project Name				2. Operational Period							
Chuweah Creek Fire				Date/Time July 16-17, 2021 0600-0600							
3. Ambulance Services											
Name		Complete Address		Phone		Advanced Life Support (ALS) Yes No					
Colville Tribal EMS Nespelem, WA		410 10 th St. Nespelem, WA 99155		Dispatch 509-978-9323		x					
Lifeline Ambulance		912 Koala Ave Omak, WA 98841		Dispatch 509-663-8091		x					
4. Air Ambulance Services											
Name		Phone		Type of Aircraft & Capability							
Airlift Northwest		800-426-2430 or 911		Rotor in Wenatchee							
Life Flight Network		800-232-0911		2 Rotors, 1 Fixed Wing, Spokane							
5. Hospitals											
Name Complete Address		GPS Datum – WGS 84 Coordinate Standard Degrees Decimal Minutes DD° MM.MMM' N - Lat DD° MM.MMM' W - Long		Travel Time From ICP Air Gnd		Phone		Helipad Yes No		Level of Care Facility	
		Lat: 44°56.5186'N Long: 119°0.4333'W VHF:		20 Min 40 Min		509-633-1753		X			
Coulee Medical Center 411 Fortuyn Rd Grand Coulee, WA 99133		Lat: 47°24.4340'N Long: 120°19.3664'W VHF:		1 Hr 2Hr 10 Min 30 Min		509-662-1511		X		Level 2 Trauma	
		Lat: 48°23.8336'N Long: 119°32.8758 VHF :		40 Min 1 Hr 14min		509-826-1760		X			
		Lat: 47°36.1897'N Long: 122°19.4759'W VHF:		2 Hr 4 Hr 15 Min 30 Min		541-222-6929		X			
Mid-Valley Hospital 912 Koala Ave Omak, WA 98841		Lat: 47°36.1897'N Long: 122°19.4759'W VHF:		2 Hr 4 Hr 15 Min 30 Min		541-222-6929		X			
Harborview Medical 325 9 th Ave Seattle, WA 98104		Lat: 47°36.1897'N Long: 122°19.4759'W VHF:		2 Hr 4 Hr 15 Min 30 Min		541-222-6929		X			
6. Division Branch Group		Capability				Personnel					
Div D						ALS Ambo 1 Lifeline (E-17)					
Div A/Z						EMT 2 (E-19) Brattner					
Div K/W											
Night Shift						(O-93) Spendlove Medic 3, (E-18) Landrum EMT 1 ALS Ambo 2 Lifeline (E-92)					
7. Prepared By (Medical Unit Leader)				8. Date/Time		9. Reviewed By (Safety Officer)			10. Date/Time		
Eamonn Ryan, Lee Venning <i>Eamonn Ryan</i>				7-15-2021 1800		Jack Cates <i>Jack Cates</i>			7-15-2021 1800		

MEDICAL PLAN (ICS 206 WF)

Controlled Unclassified Information//Basic

Medical Incident Report

FOR A NON-EMERGENCY INCIDENT, WORK THROUGH CHAIN OF COMMAND TO REPORT AND TRANSPORT INJURED PERSONNEL AS NECESSARY.

FOR A MEDICAL EMERGENCY: IDENTIFY ON SCENE INCIDENT COMMANDER BY NAME AND POSITION AND ANNOUNCE "MEDICAL EMERGENCY" TO INITIATE RESPONSE FROM IMT COMMUNICATIONS/DISPATCH.

Use the following items to communicate situation to communications/dispatch.

1. CONTACT COMMUNICATIONS / DISPATCH (**Verify correct frequency prior to starting report**)

Ex: "Communications, Div. Alpha. Stand-by for Emergency Traffic."

2. INCIDENT STATUS: *Provide incident summary (including number of patients) and command structure.*

Ex: "Communications, I have a Red priority patient, unconscious, struck by a falling tree. Requesting air ambulance to Forest Road 1 at (Lat./Long.) This will be the Trout Meadow Medical, IC is TFLD Jones. EMT Smith is providing medical care."

Severity of Emergency / Transport Priority	<input type="checkbox"/> RED / PRIORITY 1 Life or limb threatening injury or illness. Evacuation need is IMMEDIATE <i>Ex: Unconscious, difficulty breathing, bleeding severely, 2° – 3° burns more than 4 palm sizes, heat stroke, disoriented.</i> <input type="checkbox"/> YELLOW / PRIORITY 2 Serious Injury or illness. Evacuation may be DELAYED if necessary. <i>Ex: Significant trauma, unable to walk, 2° – 3° burns not more than 1-3 palm sizes.</i> <input type="checkbox"/> GREEN / PRIORITY 3 Minor Injury or illness. Non-Emergency transport <i>Ex: Sprains, strains, minor heat-related illness.</i>	
Nature of Injury or Illness & Mechanism of Injury		<i>Brief Summary of Injury or Illness (Ex: Unconscious, Struck by Falling Tree)</i>
Transport Request		<i>Air Ambulance / Short Haul/Hoist Ground Ambulance / Other</i>
Patient Location		<i>Descriptive Location & Lat. / Long. (WGS84)</i>
Incident Name		<i>Geographic Name + "Medical" (Ex: Trout Meadow Medical)</i>
On-Scene Incident Commander		<i>Name of on-scene IC of Incident within an Incident (Ex: TFLD Jones)</i>
Patient Care		<i>Name of Care Provider (Ex: EMT Smith)</i>

3. INITIAL PATIENT ASSESSMENT: *Complete this section for each patient as applicable (start with the most severe patient)*

Patient Assessment: See IRPG page 106

Treatment:

4. TRANSPORT PLAN:

Evacuation Location (if different): *(Descriptive Location (drop point, intersection, etc.) or Lat. / Long.)* Patient's ETA to Evacuation Location:

Helispot / Extraction Site Size and Hazards:

5. ADDITIONAL RESOURCES / EQUIPMENT NEEDS:

Example: Paramedic/EMT, Crews, Immobilization Devices, AED, Oxygen, Trauma Bag, IV/Fluid(s), Splints, Rope rescue, Wheeled litter, HAZMAT, Extrication

6. COMMUNICATIONS: Identify State Air/Ground EMS Frequencies and Hospital Contacts as applicable

Function	Channel Name/Number	Receive (RX)	Tone/NAC *	Transmit (TX)	Tone/NAC *
COMMAND					
AIR-TO-GRND					
TACTICAL					

7. CONTINGENCY: **Considerations:** *If primary options fail, what actions can be implemented in conjunction with primary evacuation method? Be thinking ahead.*

8. ADDITIONAL INFORMATION: *Updates/Changes, etc.*

REMEMBER: Confirm ETA's of resources ordered. Act according to your level of training. Be Alert. Keep Calm. Think Clearly. Act Decisively.

Controlled Unclassified Information//Basic