

# INCIDENT ACTION PLAN

# Chuweah Creek Fire

## July 17-18, 2021

Day/Night Operational Period 0600-0600



DOWNLOAD  
IAP



SCAN TO  
CHECK IN  
<https://bit.ly/2Rr545v>



DOWNLOAD  
MAPS

**WA-COA-200084**

N5RG [P] 1502  
221 KPA



## INCIDENT OBJECTIVES (ICS 202)

<b>1. Incident Name:</b>	<b>2. Operational Period: DAY/NIGHT</b>	
CHUWEAH CREEK FIRE	Date/Time From: 07/17/2021 0600      SAT	Date/Time To: 07/18/2021 0600      SUN
<b>3. Objective(s):</b>		
<p>Implement risk management practices for the safety of firefighters, other responders and the public as the first priority.</p> <p>Minimize impacts to private property, critical infrastructure, timber, cultural and natural resources including water, fish, wildlife, and range land.</p> <p>Maintain or improve positive community relationships and provide timely fire information to the public and cooperators.</p> <p>Establish and maintain all current COVID-19 mitigation protocols according to CDC guidelines.</p>		
<b>4. Operational Period Command Emphasis:</b>		
Implement direct suppression tactics where safe to do so to minimize fire size, protect timber values and private property.		
<b>General Situational Awareness:</b>		
Monitor the weather conditions and base all actions on current and expected fire behavior.		
<b>5. Site Safety Plan Required?</b> Yes <input type="checkbox"/> No <input checked="" type="checkbox"/>		
<b>Approved Site Safety Plan(s) Located</b>		
<b>6. Incident Action Plan</b> (the items checked below are included in this Incident Action Plan):		
<input checked="" type="checkbox"/> ICS 202 <input checked="" type="checkbox"/> ICS 203 <input checked="" type="checkbox"/> ICS 204 <input checked="" type="checkbox"/> ICS 205 <input type="checkbox"/> ICS 205A <input checked="" type="checkbox"/> ICS 206	<input type="checkbox"/> ICS 207 <input type="checkbox"/> ICS 208 <input checked="" type="checkbox"/> ICS 220 <input checked="" type="checkbox"/> Map/Chart <input checked="" type="checkbox"/> Weather Forecast/Tides/Currents	<b>Other Attachments:</b> <input checked="" type="checkbox"/> HR MESSAGE <input type="checkbox"/> _____ <input type="checkbox"/> _____ <input type="checkbox"/> _____
<b>7. Prepared by:</b> HOWARD JOHNSON      Position/Title:      PSC2	Signature: <i>Howard Johnson</i>	
<b>8. Approved by Incident Commander:</b>	Name:      BOB SHINDELAR	Signature: <i>Bob Shindelar</i>
<b>ICS 202</b>	<b>IAP Page</b>	Date/Time:      07/16/2021 2000



## **Fire Weather Forecast**

**FORECAST NO:** 4  
**PREDICTION FOR:** Saturday  
**Shift Date:** July 17-18, 2021 0600-0600  
**TIME AND DATE**  
**FORECAST ISSUED:** 7/16/2021 at 2000

**INCIDENT:** Chuweah Creek Fire  
**UNIT:** Colville Reservation  
**SIGNED:** Bob Tobin  
**Incident Meteorologist (IMET)**

---

**Weather Discussion:** The deep low pressure system off the British Columbia coast will continue to sag south. The flow will become west-southwest and finally to the south-southwest. This will bring one last cool day on Saturday. Relative humidity will still be on the dry side but show some improvement. As we head into Sunday and Monday the low will continue to track south. This will allow high pressure to push into the region from the south. This will increase temperatures beginning Sunday and continuing through next week. It will also increase moisture with the atmosphere becoming increasingly unstable. The chances for thunderstorms will increase Monday night, with a better chance of convection Tuesday.

### **WEATHER FORECAST:**

**Today:**  
**SKY/WEATHER:** Mostly sunny, and cool.  
**High Temperature...**78-83 above 2500 feet...85-90 below 2500 feet.  
**Min RH.....**20-25% above 2500 feet...15-20% below 2500 feet  
**20-FOOT WINDS:** Southwest 10 to 12 mph with gusts around 20 mph.  
**CWR (>=0.10")....** 0%    **LAL....**1    **Haines Index...3 (Very Low)**    **Mixing Height...7500 ft AGL**

**Tonight:**  
**Weather:** Clear and a little cooler.  
**Low Temperature...**62-66.  
**Max RH.....**40-50%  
**20-FOOT WINDS:** Becoming north-northeast 5 to 10 mph.  
**CWR (>=0.10")....**0%    **LAL...1.**

**Sunday:**  
**SKY/WEATHER:** Sunny and still cool.  
**High Temperature...**83-88 above 2500 feet...92-97 below 2500 feet.  
**Min RH.....**15-20% above 2500 feet...10-15% below 2500 feet  
**20-FOOT WINDS:** South-southwest winds 10-12 mph with gusts to 20 mph.  
**CWR (>=0.10")....**0%    **LAL....1**    **Haines Index...4 ( Low)**    **Mixing Height...9000 ft AGL**

**Extended Outlook**  
**Monday...** Mostly sunny...Increasing clouds in the afternoon. a slight chance of thunderstorms Monday night. Low: 65-70...High: 85-95. Min RH: 12-18% Winds: South-southwest 8-12 mph with gusts to 20 mph.  
**Tuesday...**Partly cloudy. A chance of thunderstorms. Low: 60-70...High: 83-93. Min RH: 13-18% Winds: southwest 10-15 mph with gusts 20-25 mph.

## FIRE BEHAVIOR FORECAST

<b>FORECAST NUMBER:</b> 4	<b>TYPE OF FIRE:</b> Wildland
<b>FIRE NAME:</b> Chuweah Creek	<b>OPERATIONAL PERIOD:</b> July 17-18, 2021 0600-0600
<b>DATE ISSUED:</b> July 16, 2021	<b>TIME ISSUED:</b> 1800
<b>UNIT:</b> WA-COA	<b>Don Strand FBAN</b>

### INPUTS

**WEATHER SUMMARY:** Sunny today. Max Temps near 90 with min RH near 15%. Winds SW 10-12 mph gusts 20 mph.

### OUTPUTS

#### FIRE BEHAVIOR

**GENERAL:** Fuels are very dry. Some higher elevation shrub and conifers still have some greenness. Continued active fire behavior today, especially in the afternoon in those isolated areas where fuels are exposed to afternoon and evening winds. Energy Release Component at Nespelem and Gold Mountain RAWS' are in the 97+ percentile. Fuel moistures are; 1 hour min. 4%, 10-hour min. 4-5%, 100-hour min 5%. 1000-hour fuel moistures are 6-7%. Fuels are mixed grass, brush, conifer with grass and brush understory with areas of light logging slash.

Probability of Ignition will approach 90% today. Maximum spotting distance approaching 0.2 mile or more with afternoon winds. Expect continued fire spread today. Single and group torching likely with potential for periodic runs in afternoon continuing into evening.

Potential head fire Rates of Spread and Flame Lengths calculated using forecasted weather and NFDRS fuels data from Nespelem and Gold Mountain RAWS

	FM 2 Grass	FM 5 Brush	FM 9 Needle litter	FM 10 Heavy litter
Rate of Spread	52 Chain/Hr.	40 Chain/Hr.	9 Chain/Hr.	12 Chains/Hr.
Flame Length	7'	8'	3'	6'

#### Specific:

**DIV: D.** Expect fire to back and flank with occasional short upslope runs. In limited areas where afternoon winds align with topography, potential for torching exists. In areas east of Keller Butte Road, expect backing and flanking fire behavior with isolated torching.

New addition to division: Fire is in a harvest unit with pockets of pine regeneration, grass and brush. Fire is continuing to clean up surface debris and consume unburned interior fuels. Expect squirrely winds at times to contribute possible flare ups.

**DIV: G:** Expect backing and flanking fire behavior. Potential for isolated torching on east side of Keller Butte Road. On steeper slopes, watch for roll outs carrying burning material down slope below your location.

**DIV: K/W.** Expect areas unburned areas west of Keller Butte Road to continue to clean up with surface fire spread with torching upslope runs. Expect backing and flanking fire behavior east of Keller Butte Road Continue to watch for spot fires. On steeper slopes, watch for roll outs

**AIR OPERATIONS:** Watch for turbulence in the complex terrain.

### SAFETY

**Pay attention to fire weakened trees and snags.**

**Continue to monitor for hold over spots as well as any new spots. Watch out for roll outs on steep slopes.**

**Strong Inversion this morning, expect increasing fire behavior after lifts around 1100 hours.**

**Watch for increased fire activity with wind slope alignment.**

# Safety Message

July 17-18, 2021

**INCIDENT: Chuweah Creek**

**OPERATIONAL PERIOD: 0600-0600**

## TOPICS:



### UTV Use

All employees must be trained and certified to operate a UTV as determined by home agency. Wear all personal protective equipment: approved helmet, gloves, eye protection, boots, long sleeve shirt. Use proper riding positions and all passengers must have and use safety belts. Maintain a safe and slow speed for the conditions. Never operate the UTV on hills too steep for the UTV or for your abilities. Travel straight uphill to the maximum extent practicable. If UTV begins to flip, quickly turn front wheels downhill, if possible, dismount on the uphill side. Ensure any loads are balanced and distributed correctly. Secure all loads as appropriate.

### Snags

Use avoidance to limit exposure time. Identify, flag and communicate location of hazard trees that cannot be taken down safely. Use qualified fallers or alternate methods such as use of heavy equipment to fall trees. Practice an ongoing risk analysis of all work areas. Follow hazard tree safety guidelines (irpg page 22).



**\*\*KEEP UP ON PROPER HYDRATION BEFORE, DURING, AND AFTER SHIFT\*\***

**SAFETY OFFICER: Jack Cates, Keith Wakefield, Taija Corso (T)**

# Deliberate Risk Assessment-Hazard Summary

July 17-18, 2021 0600-0600

Hazard	Mitigation	Post Risk
Viral Transmission Mitigations, Communicable Disease	Maintain awareness of health, perform self-checks, maintain social distancing, and wear face coverings in accordance with CDC recommendations. Report and isolate if not feeling well.	Low
Extraction Time	<b>Identify medivac sites and helispots.</b> Initiate ground transport to accident site. Identify EMT/EMTP from resources assigned to division. Provide line qualified paramedics to each division as available. Review IWI protocol to ensure familiarity. Utilize civilian medivac as treatment/timing dictates. Evaluate on-going need for repositioning medical personnel.	High
Steep Terrain/Gravity	Do not work crews above or below each other. Post lookouts for rolling material. Watch footing in loose soil, rock and around vegetation. Do not work below heavy equipment. Scout and identify travel routes. Establish LCES.	Moderate
Snags	Use avoidance to limit exposure time. Snag ahead to avoid exposure. Use qualified fallers, blasting, or alternate methods if needed. Conduct on-going risk analysis of all work areas. Follow Hazard Tree Safety Guidelines (IRPG page 22).	High
Communication	Evaluate for dead zones prior to engagement. Utilize human repeaters as needed. Ensure accountability of resources in problem areas.	Low
Physical Factors	Maintain hydration schedule. Closely monitor work rate and implement rest periods. Maintain nutrition. Ensure adequate work/rest.	Moderate
Environmental Factors	Assign medical personnel to camp. Assess for known allergies and report to medical personnel. Obtain Bee Bopper/wasp spray and yellow jacket traps. Maintain an awareness of livestock. Keep an eye out for wildlife including bears, cougars, and rattlesnakes.	Moderate
Fire Behavior	Be aware of burn windows and weather impacts and min/max RH for flashy fuels/local conditions. Report changes to FBAN and IMET.	Moderate
Unburned Fuels/Firing Ops	Establish LCES. Ensure management action points are implemented and followed. Weather updates as needed during burning operations. Locate indirect firelines to minimize the amount of unburned fuels. Follow Interagency Ignition Guide. Ensure communications between all firing operations. Establish road security at all firing sites. Follow approved firing plan for unburned fuels.	Moderate
Transportation	Signing of all incident roads that provide access to divisions. Daily updated travel plan maps. Practice defensive driving. In local communities obey the posted speed limits. Use reader boards to control entry as needed. Identify and evaluate contingency and alternate escape and travel routes.	High
Aircraft	Utilize Air Attack. Ensure all resources are a safe distance from all bucket and retardant drops. Establish LCES. Utilize air to ground primary radio channel. Reference IRPG (Safe aircraft operations pg. 56-58). Ensure IA resources have coordination with unassigned local air resources to provide deconfliction.	High
Heavy Equipment	Post lookouts around equipment work areas. Establish communications with equipment boss and operator. Do not work down slope from equipment.	High
Transmission Lines	Maintain one span radius from any downed line or compromised pole, be aware of smoke conductivity, report any downed lines or burning poles. Maintain awareness of utility repair crews working in and adjacent to the fire perimeter.	High
Public Interaction	Place new road closures as necessary and maintain current closures. Maintain awareness of evacuation areas and provide accurate information dissemination.	Low
Initial Attack	Ensure identified IA resources are briefed of expectations and ensure communication plan is provided. Ensure resources are briefed on IA command structure. Provide identified crews with area maps.	Moderate

**Division/Group Assignment List (ICS 204 WF)**  
**Controlled Unclassified Information//Basic**

<b>1. Incident Name:</b>				<b>3.</b>		
CHUWEAH CREEK FIRE				<b>Branch:</b>	<b>Division/Group</b>  <b>A/Z</b>	
<b>2. Operational Period: DAY/NIGHT</b>						
Date/Time From: 07/17/2021 0600 SAT		Date/Time To: 07/18/2021 0600 SUN				
<b>4. Operations Personnel</b>						
<b>OPERATIONS CHIEF</b>		AARON ROWE; TONY ENGEL KURT RANTA (T)		<b>DIVISION/GROUP SUPERVISOR</b>		LARRY LEACH
<b>AIR SUPPORT SUPERVISOR</b>		TIM LYDA		<b>SAFETY OFFICER</b>		KEITH WAKEFIELD JACK CATES; TAIJA CORSO (T)
<b>5. Resources Assigned this Period</b>						
Strike Team / Task Force / Resource Designator		LWD	Leader	Number Persons	Drop Off PT./Time	Pick Up PT./Time
O-1.55 SOF2		07/27	DON WALLER	1	ICP/0600	ICP/1800
E-11 ENG6 SILVER TIP FORESTRY 21		07/26	CASEY LOUIE	3	ICP/0600	ICP/1800
E-76 WTS2 BIA		07/26	BRIAN COVINGTON	1	ICP/0600	ICP/1800
E-113 BLS AMBU 3 - GRAYS HARBOR		07/29	CARLTON RHOADES	2	ICP/0600	ICP/1800
E-19 EMT 2		07/27	TOM BRANTNER	1	ICP/0600	ICP/1800
INSURANCE ENGINE RAINIER 10				2		
INSURANCE ENGINE 5433				2		
INSURANCE ENGINE SGS7				2		
<b>6. Control Operations/Work Assignments:</b>						
<p>TASK - Patrol structures and fire perimeter.  PURPOSE - Protect property and resources.  END STATE - Fire is contained within the current perimeter and the threat to structures is limited.</p>						
<b>7. Special Instructions:</b>						
Utilize direct line tactics where possible. Burn out indirect line as needed.						
<b>8. Division/Group Communication Summary</b>						
Function	Channel	RX Frequency N/W	RX Tone/NAC	TX Frequency N/W	TX Tone/NAC	Mode
COMMAND	6	159.4275	192.8	151.2725	192.8	A
COMMAND	7	170.4500	123.0	168.1000	123.0	A
TACTICAL	1	168.0500	123.0	168.0500	123.0	A
AIR TO GROUND	14	171.6750		171.6750		A
<b>9. Prepared By (Resource Unit Leader)</b>			<b>Approved By (Planning Section Chief)</b>		<b>Date</b>	<b>Time</b>
JILL JOHNSON			HOWARD JOHNSON		07/16/2021	2000



**Division/Group Assignment List (ICS 204 WF)**  
**Controlled Unclassified Information//Basic**

<b>1. Incident Name:</b>				<b>3.</b>		
CHUWEAH CREEK FIRE				<b>Branch:</b>	<b>Division/Group</b>  <b>D/G</b>	
<b>2. Operational Period: DAY/NIGHT</b>						
Date/Time From: 07/17/2021 0600 SAT		Date/Time To: 07/18/2021 0600 SUN				
<b>4. Operations Personnel</b>						
<b>OPERATIONS CHIEF</b>		AARON ROWE; TONY ENGEL KURT RANTA (T)		<b>DIVISION/GROUP SUPERVISOR</b>		MATT KENNEDY
<b>AIR SUPPORT SUPERVISOR</b>		TIM LYDA		<b>SAFETY OFFICER</b>		KEITH WAKEFIELD JACK CATES; TAIJA CORSO (T)
<b>5. Resources Assigned this Period</b>						
Strike Team / Task Force / Resource Designator	LWD	Leader	Number Persons	Drop Off PT./Time	Pick Up PT./Time	
O-1.67 SOF2	07/27	JOSH NORTHRUP	1	ICP/0600	ICP/1800	
O-46 SOFR	07/29	DAN GARNER	1	ICP/0600	ICP/1800	
O-124 TFLD	07/28	GREG ANDERSON	1	ICP/0600	ICP/1800	
O-9 HEQB	07/29	JEREMY HUNT	1	ICP/0600	ICP/1800	
O-94 HEQB	07/28	NICHOLAS HARPER	1	ICP/0600	ICP/1800	
O-95 HEQB (T)	07/29	ASA RAY	1	ICP/0600	ICP/1800	
C-6 HC2 PACIFIC OASIS #1	07/29	JAMES SPRIGGS	20	ICP/0600	ICP/1800	
C-7 HC2 SUNSET FORESTRY 1	07/29	ADAN MEJIA	20	ICP/0600	ICP/1800	
E-9 ENG6 SILVER TIP FORESTRY 21	07/26	JEREMY TAYLOR	3	ICP/0600	ICP/1800	
E-14 ENG6 BLACK PINE	07/20	BEATTEY, JOE	3	ICP/0600	ICP/1800	
E-16 ENG6 THE GENERAL BR 102	07/20	ADAM BENKEL	2	ICP/0600	ICP/1800	
E-105 ENG6 OSPREY WILDFIRE LLC	07/29	KEVIN ROE	3	ICP/0600	ICP/1800	
E-109 ENG6 BAILY ENTERPRISES	07/29	MIKE OJANEN	3	ICP/0600	ICP/1800	
E-110 ENG6 PACIFIC NW WILDFIRE 1	07/29	WILLIAM WELSH	3	ICP/0600	ICP/1800	
E-87 SKG3 SKIDGINE	07/28	JACK OBRYAN	2	ICP/0600	ICP/1800	
E-1 WTS2 INNES WOOD PRODUCTS	07/27	SCOTT DAWSON	1	ICP/0600	ICP/1800	
E-82 WTS2 ASPEN MTN RESOURCES 10	07/29	RANDY OWEN	1	ICP/0600	ICP/1800	
<b>8. Division/Group Communication Summary</b>						
Function	Channel	RX Frequency N/W	RX Tone/NAC	TX Frequency N/W	TX Tone/NAC	Mode
COMMAND	6	159.4275	192.8	151.2725	192.8	A
TACTICAL	2	168.2000	123.0	168.2000	123.0	A
AIR TO GROUND	14	171.6750		171.6750		A
<b>9. Prepared By (Resource Unit Leader)</b>			<b>Approved By (Planning Section Chief)</b>		<b>Date</b>	<b>Time</b>
JILL JOHNSON			HOWARD JOHNSON		07/16/2021	2000

**Division/Group Assignment List (ICS 204 WF)**  
**Controlled Unclassified Information//Basic**

<b>1. Incident Name:</b>			<b>3.</b>			
CHUWEAH CREEK FIRE			<b>Branch:</b>		<b>Division/Group</b>	
<b>2. Operational Period:</b> DAY/NIGHT					<b>D/G</b>	
Date/Time From: 07/17/2021 0600 SAT		Date/Time To: 07/18/2021 0600 SUN				
<b>4. Operations Personnel</b>						
<b>OPERATIONS CHIEF</b>		AARON ROWE; TONY ENGEL KURT RANTA (T)		<b>DIVISION/GROUP SUPERVISOR</b>		MATT KENNEDY
<b>AIR SUPPORT SUPERVISOR</b>		TIM LYDA		<b>SAFETY OFFICER</b>		KEITH WAKEFIELD JACK CATES; TAIJA CORSO (T)
<b>5. Resources Assigned this Period</b>						
Strike Team / Task Force / Resource Designator		LWD	Leader	Number Persons	Drop Off PT./Time	Pick Up PT./Time
E-83 WTS2 ASPEN MTN RESOURCES 14		07/29	WARREN HANSEN	1	ICP/0600	ICP/1800
E-23 DOZ3 TIGER TRUCKING			CODY HASTINGS	2	ICP/0600	ICP/1800
E-80 DOZ2 IRON TRIANGLE		07/28	JOSH MOULTON	2	ICP/0600	ICP/1800
E- DOZ3 MCCLURE EQUIP			GARY MCCLURE	2	ICP/0600	ICP/1800
E-56 UTV			-- NONE --		ICP/0600	ICP/1800
E-57 UTV			-- NONE --		ICP/0600	ICP/1800
E-17 ALS AMBU LIFELINE		07/27	DALE SMITH	2	ICP/0600	ICP/1800
<b>6. Control Operations/Work Assignments:</b>						
<p>TASK - Anchor and flank the fire perimeter from A/D division break, south to the D/K division break. Contain Incident 90.  PURPOSE - Protect resources &amp; property north and east of fire perimeter.  END STATE - Fire is contained north of Cache Creek Rd and south toward the Div K break. Structures secured south of Cache Creek Rd.</p>						
<b>7. Special Instructions:</b>						
Utilize direct line tactics where possible. Burn out indirect line as needed.						
<b>8. Division/Group Communication Summary</b>						
Function	Channel	RX Frequency N/W	RX Tone/NAC	TX Frequency N/W	TX Tone/NAC	Mode
COMMAND	6	159.4275	192.8	151.2725	192.8	A
TACTICAL	2	168.2000	123.0	168.2000	123.0	A
AIR TO GROUND	14	171.6750		171.6750		A
<b>9. Prepared By (Resource Unit Leader)</b>			<b>Approved By (Planning Section Chief)</b>		<b>Date</b>	<b>Time</b>
JILL JOHNSON			HOWARD JOHNSON		07/16/2021	2000

**Division/Group Assignment List (ICS 204 WF)**  
**Controlled Unclassified Information//Basic**

<b>1. Incident Name:</b>			<b>3.</b>			
CHUWEAH CREEK FIRE			<b>Branch:</b>		<b>Division/Group</b>	
<b>2. Operational Period:</b> DAY/NIGHT					<b>K/W</b>	
Date/Time From: 07/17/2021 0600 SAT		Date/Time To: 07/18/2021 0600 SUN				
<b>4. Operations Personnel</b>						
<b>OPERATIONS CHIEF</b>		AARON ROWE; TONY ENGEL KURT RANTA (T)		<b>DIVISION/GROUP SUPERVISOR</b>		BOB HINDS
<b>AIR SUPPORT SUPERVISOR</b>		TIM LYDA		<b>SAFETY OFFICER</b>		KEITH WAKEFIELD JACK CATES; TAIJA CORSO (T)
<b>5. Resources Assigned this Period</b>						
Strike Team / Task Force / Resource Designator		LWD	Leader	Number Persons	Drop Off PT./Time	Pick Up PT./Time
O-1.66 SOF2		07/27	JOHN BARNES	1	ICP/0600	ICP/1800
O-46 SOFR		07/29	DAN GARNER	1	ICP/0600	ICP/1800
O-112 TFLD (T)		07/29	GARY HUGHES	1	ICP/0600	ICP/1800
O- STEQ (T)			RANDY BURKE	1	ICP/0600	ICP/1800
O-122 FMOD BAILEY LOGGING		07/29	JOSH NEWMAN	2	ICP/0600	ICP/1800
O-123 FMOD BROTHERS FIRE LLC		07/29	TOM HOFFMAN	2	ICP/0600	ICP/1800
C-4 HC2I RSF - NWR1			JOSEPH WELBURN	20	ICP/0600	ICP/1800
C-5 HC2 PACIFIC COAST CONTRACTING		07/29	NORBERTO PANTALEON	20	ICP/0600	ICP/1800
E-98 ENG4 A TEAM WILDFIRE		07/30	RICK SCHMITTLE	2	ICP/0600	ICP/1800
E-103 ENG6 LATE SUMMERS WF 05		07/29	MATTHEW HENRY	3	ICP/0600	ICP/1800
E-106 ENG6 TIMBERMANS QUAL TREE SVC 2		07/29	JACK HENDRIX	3	ICP/0600	ICP/1800
E-88 SKG3 SKIDGINE		07/28	SCOTT SHINALL	2	ICP/0600	ICP/1800
E-84 WTS2 RAINS CONTRACTING 3		07/29	JIM HUTTON	1	ICP/0600	ICP/1800
E-24 DOZ3 JONES LOGGING		07/27	JASON JONES	2	ICP/0600	ICP/1800
E-77 DOZ3 BIA			JIM PHILLIPS	2	ICP/0600	ICP/1800
<b>8. Division/Group Communication Summary</b>						
Function	Channel	RX Frequency N/W	RX Tone/NAC	TX Frequency N/W	TX Tone/NAC	Mode
COMMAND	7	170.4500	123.0	168.1000	123.0	A
TACTICAL	3	168.6000	123.0	168.6000	123.0	A
AIR TO GROUND	14	171.6750		171.6750		A
<b>9. Prepared By (Resource Unit Leader)</b>			<b>Approved By (Planning Section Chief)</b>		<b>Date</b>	<b>Time</b>
JILL JOHNSON			HOWARD JOHNSON		07/16/2021	2000

**Division/Group Assignment List (ICS 204 WF)**  
**Controlled Unclassified Information//Basic**

<b>1. Incident Name:</b>			<b>3.</b>			
CHUWEAH CREEK FIRE			<b>Branch:</b>		<b>Division/Group</b>	
<b>2. Operational Period:</b> DAY/NIGHT					<b>K/W</b>	
Date/Time From: 07/17/2021 0600 SAT		Date/Time To: 07/18/2021 0600 SUN				
<b>4. Operations Personnel</b>						
<b>OPERATIONS CHIEF</b>		AARON ROWE; TONY ENGEL KURT RANTA (T)		<b>DIVISION/GROUP SUPERVISOR</b>		BOB HINDS
<b>AIR SUPPORT SUPERVISOR</b>		TIM LYDA		<b>SAFETY OFFICER</b>		KEITH WAKEFIELD JACK CATES; TAIJA CORSO (T)
<b>5. Resources Assigned this Period</b>						
Strike Team / Task Force / Resource Designator		LWD	Leader	Number Persons	Drop Off PT./Time	Pick Up PT./Time
<b>6. Control Operations/Work Assignments:</b>						
TASK - Anchor and flank the fire perimeter from Z/W division break to the K/G division break. PURPOSE - Protect resources and property southeast of the fire. END STATE - The fire is contained north of Buffalo Lake and west of Keller Butte Rd.						
<b>7. Special Instructions:</b>						
Utilize direct line tactics where possible. Burn out indirect line as needed.						
<b>8. Division/Group Communication Summary</b>						
Function	Channel	RX Frequency N/W	RX Tone/NAC	TX Frequency N/W	TX Tone/NAC	Mode
COMMAND	7	170.4500	123.0	168.1000	123.0	A
TACTICAL	3	168.6000	123.0	168.6000	123.0	A
AIR TO GROUND	14	171.6750		171.6750		A
<b>9. Prepared By (Resource Unit Leader)</b>			<b>Approved By (Planning Section Chief)</b>		<b>Date</b>	<b>Time</b>
JILL JOHNSON			HOWARD JOHNSON		07/16/2021	2000

**Division/Group Assignment List (ICS 204 WF)**  
**Controlled Unclassified Information//Basic**

<b>1. Incident Name:</b>				<b>3.</b>		
CHUWEAH CREEK FIRE				<b>Branch:</b>	<b>Division/Group</b>  <b>NIGHT</b>	
<b>2. Operational Period: DAY/NIGHT</b>						
Date/Time From: 07/17/2021 0600 SAT		Date/Time To: 07/18/2021 0600 SUN				
<b>4. Operations Personnel</b>						
<b>OPERATIONS CHIEF</b>		AARON ROWE; TONY ENGEL KURT RANTA (T)		<b>DIVISION/GROUP SUPERVISOR</b>		MICHAEL JACKSON
<b>AIR SUPPORT SUPERVISOR</b>		TIM LYDA		<b>SAFETY OFFICER</b>		JACK CATES ; KEITH WAKEFIELD TAIJA CORSO (T)
<b>5. Resources Assigned this Period</b>						
Strike Team / Task Force / Resource Designator	LWD	Leader	Number Persons	Drop Off PT./Time	Pick Up PT./Time	
O-117 SOF2	07/29	DEAN KIEFER	1	ICP/1800	ICP/0600	
O-3 TFLD	07/21	LANNIE PEDERSEN	1	ICP/1800	ICP/0600	
O-4 TFLD (T)	07/21	ROSS AVICHOUSER	1	ICP/1800	ICP/0600	
O-49 TFLD	07/18	CODY DESUATEL	1	ICP/1800	ICP/0600	
C-3 HC2I HIGHLANDS	07/19	SETH SCHERTENLEIB	20	ICP/1800	ICP/0600	
E-7 ENG6 NORTHERN COLUMBIA REFOR	07/20	LENORD DENISON	2	ICP/1800	ICP/0600	
E-10 ENG6 EARLY WINTERS	07/20	CHRIS SURFACE	3	ICP/1800	ICP/0600	
E-12 ENG6 AEGIS LOGISTICS	07/20	ROY VARENEY	3	ICP/1800	ICP/0600	
E-13 ENG6 AEGIS LOGISTICS	07/27	KERRI HENDRIX	3	ICP/1800	ICP/0600	
E-15 ENG6 AMERICAN FIREFIGHTER CO	07/20	MIKE RIDEOUT	3	ICP/1800	ICP/0600	
E-53 WTS3 JRD CONSTRUCTION	07/28	DENNIS PAYNE	1	ICP/1800	ICP/0600	
E-76 WTS2 BIA	07/26	BLAIN COVINGTON	1	ICP/1800	ICP/0600	
E-22 DOZ3 PUMPER CAT	07/26	DARRELL GREEN	2	ICP/1800	ICP/0600	
E-77 DOZ3 BIA	07/26	GEORGE BATTEN	2	ICP/1800	ICP/0600	
E- DOZ3 MCCLURE	07/29	RICH PETERSON	2	ICP/1800	ICP/0600	
E-92 ALS AMBU 2	07/29	TAYLOR MORROW	2	ICP/1800	ICP/0600	
<b>8. Division/Group Communication Summary</b>						
Function	Channel	RX Frequency N/W	RX Tone/NAC	TX Frequency N/W	TX Tone/NAC	Mode
COMMAND	6	159.4275	192.8	151.2725	192.8	A
COMMAND	7	170.4500	123.0	168.1000	123.0	A
TACTICAL	4	166.7250	123.0	166.7250	123.0	A
AIR TO GROUND	14	171.6750		171.6750		A
<b>9. Prepared By (Resource Unit Leader)</b>			<b>Approved By (Planning Section Chief)</b>		<b>Date</b>	<b>Time</b>
JILL JOHNSON			HOWARD JOHNSON		07/16/2021	2000

**Division/Group Assignment List (ICS 204 WF)**  
**Controlled Unclassified Information//Basic**

<b>1. Incident Name:</b>			<b>3.</b>			
CHUWEAH CREEK FIRE			<b>Branch:</b>		<b>Division/Group</b>	
<b>2. Operational Period:</b> DAY/NIGHT			<b>NIGHT</b>			
Date/Time From: 07/17/2021 0600 SAT		Date/Time To: 07/18/2021 0600 SUN				
<b>4. Operations Personnel</b>						
<b>OPERATIONS CHIEF</b>		AARON ROWE; TONY ENGEL KURT RANTA (T)		<b>DIVISION/GROUP SUPERVISOR</b>		MICHAEL JACKSON
<b>AIR SUPPORT SUPERVISOR</b>		TIM LYDA		<b>SAFETY OFFICER</b>		JACK CATES ; KEITH WAKEFIELD TAIJA CORSO (T)
<b>5. Resources Assigned this Period</b>						
Strike Team / Task Force / Resource Designator		LWD	Leader	Number Persons	Drop Off PT./Time	Pick Up PT./Time
E-18 EMT1		07/27	MARA LANDRUM	1	ICP/1800	ICP/0600
O-93 EMPF MEDIC 3		07/28	BRIAN SPENDLOVE	1	ICP/1800	ICP/0600
<b>6. Control Operations/Work Assignments:</b>						
<p>Div A/Z  TASK - Patrol structures and fire perimeter.  PURPOSE - Protect property and resources.  END STATE - Fire is contained within the current perimeter and the threat to structures is limited.</p> <p>Div D  TASK - Anchor and flank the fire perimeter from A/D division break, south to the D/K division break. Contain Incident 90.  PURPOSE - Protect resources &amp; property north and east of fire perimeter.  END STATE - Fire is contained north of Cache Creek Rd and south toward the Div K break. Structures secured south of Cache Creek Rd.</p> <p>Div K/W  TASK - Anchor and flank the fire perimeter from Z/W division break to the K/G division break.  PURPOSE - Protect resources and property southeast of the fire.  END STATE - The fire is contained north of Buffalo Lake and west of Keller Butte Rd.</p>						
<b>7. Special Instructions:</b>						
Utilize direct line tactics where possible. Burn out indirect line as needed.						
<b>8. Division/Group Communication Summary</b>						
Function	Channel	RX Frequency N/W	RX Tone/NAC	TX Frequency N/W	TX Tone/NAC	Mode
COMMAND	6	159.4275	192.8	151.2725	192.8	A
COMMAND	7	170.4500	123.0	168.1000	123.0	A
TACTICAL	4	166.7250	123.0	166.7250	123.0	A
AIR TO GROUND	14	171.6750		171.6750		A
<b>9. Prepared By (Resource Unit Leader)</b>			<b>Approved By (Planning Section Chief)</b>		<b>Date</b>	<b>Time</b>
JILL JOHNSON			HOWARD JOHNSON		07/16/2021	2000

AIR OPERATIONS SUMMARY

PREPARED BY: Paul Balfour

PREPARED DATE/TIME: July 16,1800 hrs

<b>INCIDENT NAME</b> CHUWEAH CR	<b>2. OPERATIONAL PERIOD:</b> Date: July 17-18, 2021 0600-0600 Helibase Start Time: 0830 End Time: 2000 Sunrise: 0514 Sunset: 2051 (Times valid for Nespelem)
------------------------------------	---

<b>3. REMARKS (Safety Notes, Hazards, Air Operations Special Equipment, etc.):</b> General Aviation, See & Avoid  Bucket work, Retardant drops: ensure area is clear of ground personnel before dropping; watch for wires; be aware of potential for turbulence at ridge tops, saddles, canyons, etc *** BE AWARE OF FATIGUE, TAKE LONGER BREAKS WHEN FLYING IN SMOKEY CONDITIONS. *** Report all TFR intrusions to Air Operations, Air Support or Helibase as soon as possible.	<b>4. MEDEVAC A/C:</b> Contact Mt Tolman Fire Center 509-634-3100 Or Chuweah Cr Comm 509-634-2022	<b>5. TFR #1/8801 (A48)</b> Freq: 118.400
---	---	--

6. PERSONNEL	LWD	Phone	7. FREQUENCIES	AM	FM	8. FIXED-WING	# Avail / Type/ Make-Model / FAA N# / Base(s)
AOBD: Mike Davis (virtual)		509-699-9350	AIR/AIR Primary (A-6)	118.4000		Fixed Wing/Buckets	DIVS order thru ATGS if up, if not go to Communications
ASGS: Tim Lyda O-1.37		206-473-1425	AIR/AIR Secondary (A-7)	12402500			
HEBM:			AIR/GROUND Primary (A-4)		171.6750	ATGS Aircraft	AA Michelle Moore 208-608-6638 690 Commander N364WA, IA  AA Matt Woosely 509-322-5260 500 Commander N531SA (A-54)
HEMG:			AIR/GROUND Secondary (A-5)		167.9500		
ATGS: Matt Woosley O-101		509-322-5260	DNR-AIR/GROUND IA		159.270 T-103.5		
ATGS:			AIR/Ground Ch 51 IA		168.3125		LATs Order through Air Attack/AOBD Mt Tolman Dispatch
Mt Tolman:		509-634-3100	UNICOM OMAK	122.8		NOTES:	ICP helispot: N48 08 023 W118 59 226
Debbie Coudell		509-570-4133	DECK				
Michelle		509-675-0675					

9. HELICOPTERS

FAA N#	TY	MAKE/MODEL	BASE	START	AVAIL	REMARKS	FAA N#	TY	MAKE/MODEL	BASE	START	AVAIL	REMARKS
N448JS	1	S-61	OMK	0830	0900	Long Line Bucket	NOCB	1	K MAX	OMK	1000	1000	DNR Lend/Lease Only
N947CH	1	CH 47				Arrive PM							

# INCIDENT RADIO COMMUNICATIONS PLAN (ICS 205)

Controlled Unclassified Information//Basic

<b>1. Incident Name:</b>	<b>2. Date/Time Prepared:</b>	<b>3. Operational Period: DAY/NIGHT</b>	
CHUWEAH CREEK FIRE	Date: 07/16/2021 Time: 2000	Date/Time From: 07/17/2021 0600 SAT	Date/Time To: 07/18/2021 0600 SUN

**4. Basic Radio Channel Use:**

Zone Group	Ch #	Function	Channel Name/Trunked Radio System Talkgroup	Assignment	RX Freq	RX Tone/NAC	TX Freq	TX Tone/NAC	Mode (A,D, or M)	Remarks
	1	TACTICAL	TAC 1	DIV A / Z	168.0500	123.0	168.0500	123.0	A	
	2	TACTICAL	TAC 2	DIV D / G	168.2000	123.0	168.2000	123.0	A	
	3	TACTICAL	TAC 3	DIV K / W	168.6000	123.0	168.6000	123.0	A	
	4	TACTICAL	TAC 4	NIGHT	166.7250	123.0	166.7250	123.0	A	
	5	TACTICAL	TAC 5	RESERVED	166.7750	123.0	166.7750	123.0	A	NOT IN SERVICE
	6	COMMAND	CMD 6	NORTH	159.4275	192.8	151.2725	192.8	A	CODY BUTTE - LINKED TO CMD 7
	7	COMMAND	CMD 7	SOUTH	170.4500	123.0	168.1000	123.0	A	KELLER LO - LINKED TO CMD 6
	8	COMMAND	CMD 8	BACKUP COMMAND	169.7250	88.5	164.2500	100.0	A	FIRE A - MOSES MTN
	9	COMMAND	KELLER REPEATER	IA	169.7125	136.5	164.1625	123.0	A	FIRE B - KELLER LO
	10	COMMAND	MOSES REPEATER	IA	169.7125	136.5	164.1625	100.0	A	FIRE B - MOSES MTN
	11	TACTICAL	WA REDNET	IA	153.8300		153.8300		A	IA ONLY
	12	TACTICAL	FIRE C TAC	IA	166.9750	151.4	166.9750	151.4	A	IA ONLY
	13	AIR TO GROUND	A/G 51	IA	168.3125		168.3125		A	IA ONLY
	14	AIR TO GROUND	A/G PRI		171.6750		171.6750		A	AIR TO GROUND PRIMARY
	15	AIR TO GROUND	A/G SEC		167.9500		167.9500		A	AIR TO GROUND SECONDARY
	16	AIR GUARD	AIRGUARD	AIRGUARD	168.6250		168.6250	110.9	A	EMERGENCY AIR TRAFFIC ONLY

**5. Special Instructions:**

<b>6. Prepared By</b> (Communications Unit Leader)	Name: MISSY PARKER	Signature: <i>Missy Parker</i>
ICS 205	IAP Page	Date/Time: 07/16/2021 2000

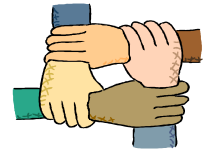
Controlled Unclassified Information//Basic

FINAL





# Human Resource Message



## Chuweah Creek Fire July 17-18, 2021 0600-0600

### **Fit for Duty, Fatigue & You:**

According to OSHA, **fit for duty** means that an individual is in a physical, mental, and emotional state which enables the employee to perform the essential tasks of his or her work assignment in a manner which does NOT threaten the safety or health of oneself, co-workers, property, or the public at large.

The National Interagency Fire Center upgraded Wednesday to Preparedness Level 5 for the earliest time in 10 years. Preparedness Level 5 is the highest level of wildland fire activity. NIFC made the decision due to "significant fire activity occurring in multiple geographical areas, an increase in incident management team mobilization, and heavy shared resources commitment to large fires nationally."

With the increase in fire activity nationally and the competition for resources, a lot of stress is placed on firefighters to support, regionally and nationally, all the fires. Fatigue is always a concern given the long, hard hours spent fighting fire or working in support of the fire. So, the question regarding, "am I fit for duty" is an important question to ask. By making healthy food choices, getting adequate rest, taking breaks when necessary, and staying hydrated, we have a greater ability to be fit for duty. To take care of others, you must first take care of yourself. As you know, one cannot pour from an empty cup.

We are here for your support so please do not hesitate to reach out to any team member or human resources for that support. Pay attention to what your body is telling you and take breaks and rest when necessary. Take the time to call home to let your family know you are okay.

### **Quote for the Day:**



***"To keep the body in good health is a duty, otherwise we shall not be able to keep our mind strong and clear." ~Buddha***

**Susie Manezes, PNW-Team 12- (HRSP) Contact Number: 602-571-9327**

Quiet Hours between 2200 and 0600.

Mutual Respect, You Make the Difference!

## Nespelem History

The Chuweah Fire is burning within the traditional territory of the *nspiləm* (Nespelem), one of the twelve constituent tribes of the Confederated Tribes of the Colville Reservation. *Nspiləm*, in the Tribe's native language of *nsəlxcin*, part of the Northern Interior Salish language family, means "Prairie." The town of Nespelem is located in the heart of the *nspiləm* traditional territory. The *nspiləm* territory extends north to the headwaters of the Nespelem River and south across the Columbia River. Most *nspiləm* villages lined the Columbia River. The easternmost village located at the Grand Coulee, while the western limit was near Hopkins Canyon. The largest of the *nspiləm* villages was located on the lower Nespelem River, extending from the falls to the river's mouth.

The *nspiləm* traditional territory is encompassed within the boundaries of the Colville Reservation. Although the *nspiləm* maintained their aboriginal homeland, they had to adjust to the influx of other displaced tribal members sent to live on the Colville Reservation. The Colville Reservation was created by the Executive Order of July 2, 1872. The original Indian Agency for these and other tribes was located in the town of Chewelah.

By 1880 at least two families occupied the immediate area of Nespelem, those of Johnny Frank and Nespelem George. Nespelem George was the last traditional leader of the band prior to the Colville Tribes moving to an elected government in 1938. Other Indian families lived along the Little Nespelem River, Owhi Lake, Johnson Lake, and Gold Lake. Tribal members hunted the valleys and hills, fished for salmon in the Columbia River and along its tributaries, and collected roots, berries and other foods throughout the year.

Later in the 1880s, Chief Moses and his people moved to the Nespelem area and then the Chief Joseph Band of Nez Perce. After the arrival of the Moses Columbia and Joseph Band, Nespelem became a Sub-Agency for the Colville Reservation in 1912 and 1913. Agency headquarters moved permanently to the current Agency Campus two miles south of Nespelem in 1935.

The Town of Nespelem was platted 1913 and incorporated in 1934. The big changes in Nespelem came not when the South Half was opened to mineral entry in 1889, but when construction of Grand Coulee Dam began in the early 1930s. Downtown streets were paved, roads improved, a community waterworks and irrigation system constructed, and an REA-financed cooperative brought in electricity in 1942, to be followed by introduction of the telephone. During the Grand Coulee Dam construction era, Nespelem's population increased to 500 people.

Today the Agency Campus in Nespelem remains the seat of tribal government for more than 9,429 descendants of 12 aboriginal tribes of Indians enrolled in the Confederated Tribes of the Colville. The twelve tribes which compose the Confederated Tribes of the Colville Reservation include: *ščəlámxəx<sup>w</sup>* (deep water) or Chelan; *wałwáma* (Wallowa people) or Chief Joseph Band of Nez Perce; *sǎ<sup>w</sup>yʔilp* (sharp pointed trees) or Colville; *šntiyátk<sup>w</sup>əx<sup>w</sup>* (grass in the water) or Entiat; *snʔáyckst* (speckled fish) or Lakes; *mətx<sup>w</sup>u* (blunt hills around a valley) or Methow; *škwáxcənəx<sup>w</sup>* (people living on the bank) or Moses-Columbia; *nspilm* (prairie) or Nespelem; *uknaqin* (seeing over the top) or Okanogan; *palúšpam* (people from Palouse) or Palus; *sənpʔwílx* (grey mist as far as one can see) or San Poil, and *šnpəšq<sup>w</sup>áwsəx<sup>w</sup>* (people in between) or Wenatchi.

# **LOGISTICS MESSAGE**

## **KITCHEN**

Breakfast 0500 – 0900

Dinner 1700-2200

Lunches and ice are available at the refrigerated trailers.

## **SHOWERS**

### **Open hours**

0500 - 1200 and 1400 - 2200

## **GROUND SUPPORT**

Ground Support hours **0600-2200**

Attention WEX card users... Fuel is available in Nespelem at Jacksons Service Station. See ground support for directions.

## **SUPPLY**

Cache hours **0600-2200**

Cache orders prior to 0900 should be delivered same day.



## Chuweah Creek Fire Finance

FSC2 – Cheri Fuller, FSC2 (T) Christina Goebel

Email : [2021.chuweahcreek.finance@firenet.gov](mailto:2021.chuweahcreek.finance@firenet.gov)

Phone: 425-495-3420

Hours of operation 0530 – 2200

If you haven't checked in with finance, you need to do so if you would like to be paid. If you were part of the initial attack, please come see us ASAP.

### **Need to see the following ...**

C-11

E-5  
E- 22  
E- 52  
E- 53  
E- 77  
E- 91  
E-103

O-1.67  
O- 41  
O- 49  
O- 130

Thank you and remember to be safe

# Incident Maps

Maps are not included in the IAP document due to size and page count. For detailed Operations, Transportation and other maps, [click here](#) or scan QR code:



## Send Map Updates

Send map updates by email to [2021.chuweahcreek.situation@firenet.gov](mailto:2021.chuweahcreek.situation@firenet.gov) or text/call the Situation Unit at 360-584-3373. Make sure to include your name, position and explanation of the update you send.

### How to correctly send data from Avenza

1. Open the map in Avenza.
2. Click the pin with three lines near the lower-right corner.
3. *iPhone*: In the lower right, click the square with up arrow. From the pop-up menu, choose Export to Others.

*Android*: In the lower right, click the circle with three lines. Click the pop-up circle with up arrow.

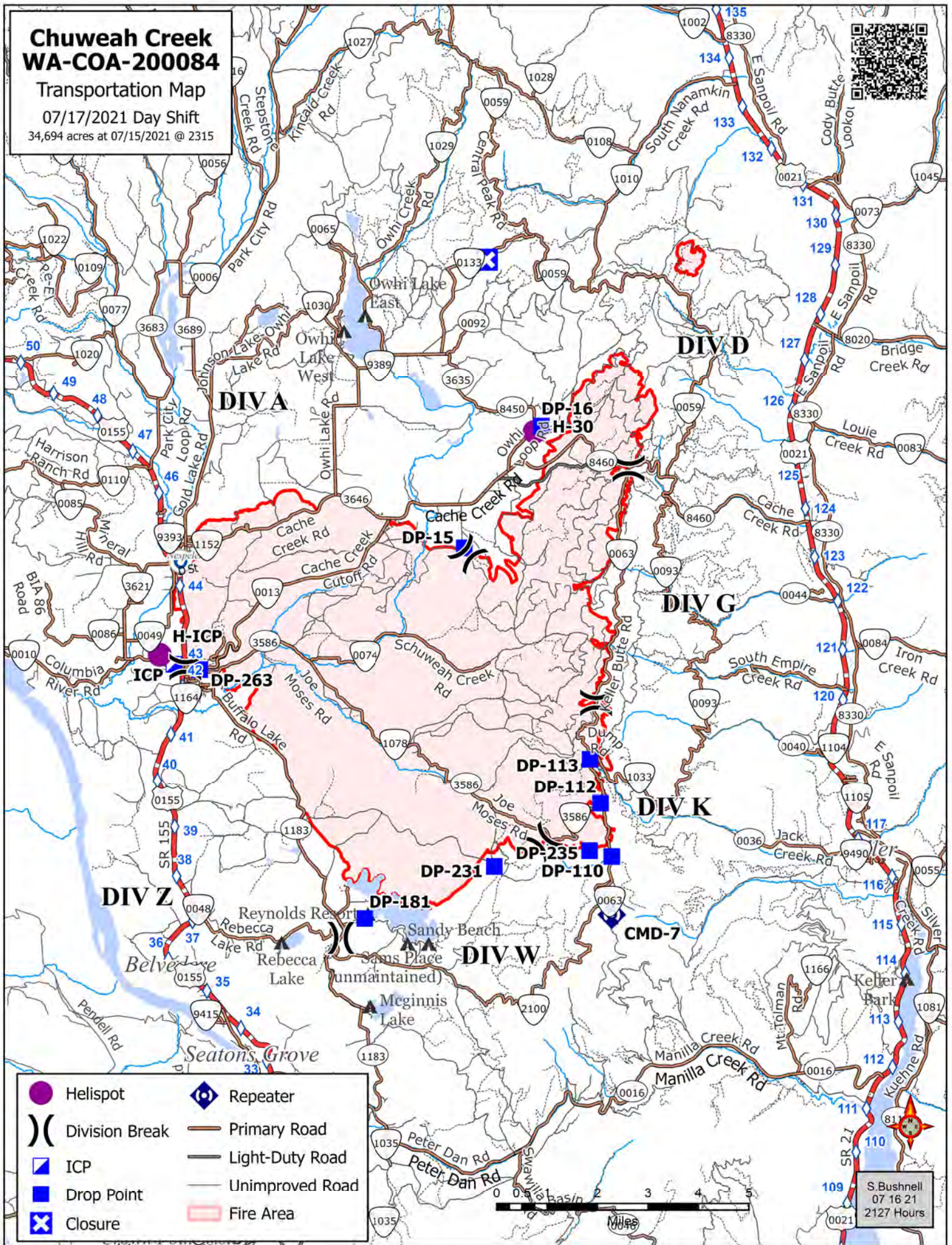
4. Set these options:
  - a. Filename – leave alone
  - b. Export Format – choose SHP, GPX or XML
  - c. Data – all features
  - d. Image size – no image
5. Click the Export button in the upper-right corner.
6. When the export is ready, choose your Mail application.
7. Send the email to [2021.chuweahcreek.situation@firenet.gov](mailto:2021.chuweahcreek.situation@firenet.gov).
8. Your email needs to include your name and position
9. Your email needs to include an explanation of the data you are sending.

# Chuweah Creek WA-COA-200084

Transportation Map

07/17/2021 Day Shift

34,694 acres at 07/15/2021 @ 2315



	Helispot		Repeater
	Division Break		Primary Road
	ICP		Light-Duty Road
	Drop Point		Unimproved Road
	Closure		Fire Area



S. Bushnell  
07 16 21  
2127 Hours

## **COVID-19 MITIGATIONS FOR CHUWEAH FIRE**

- Fully vaccinated individuals are not required to wear masks in camp or at ICP.
- Individuals who have not been vaccinated should continue to wear masks and observe social distancing while gathered with others outside of their module and during ANY indoor activities.
- Conduct daily verbal screening checks within crews, report any COVID-like symptoms to your direct supervisor. Supervisors should report any positive symptoms to the Medical Unit for next steps.
- To the extent possible, observe “Module as One” practices between crews, allowing for safe distance and minimizing close contact with other crews and resources.
- Limit traffic inside of the ICP building to Incident Management Team members and essential visitors as much as possible.
- Observe social distancing standards while waiting in line for food and limit contact with others outside of your crew in the food service line. If possible, send crew representatives to pick up meals.
- Practice good personal hygiene, wash hands frequently and disinfect high-traffic areas on a regular basis.
- Limit close contact between firefighters and the public as much as possible to prevent exposure and spread.





## **EMERGENCY PLAN**

### **INCIDENT WITHIN AN INCIDENT**

#### **ON SCENE SUPERVISOR**

**In the event of an accident or medical incident of any size, your primary responsibility is to ENSURE that the victim(s) receive prompt and effective Triage, Treatment and Transportation.**

- Conduct size-up of the incident (nature of accident, number type of resources involved, latitude and longitude location): notify incident communications center and supervisor, request assistance as needed.
- Order and coordinate medical and support response to the accident.
- Evaluate special needs (law enforcement, haz mat, etc.).
- Clear the command frequency if medical emergency; coordinate with incident communications and air attack for air medical transportation needs
- Preserve and photograph the scene for accident investigation.
- Remain aware of surroundings and the status of the main incident (delegate personnel to monitor the main fire) to ensure safety of medical treatment personnel.
- Until relieved, supervise and manage all personnel involved at the incident scene.
- **ENSURE THE MEDICAL INCIDENT REPORT IN THE INCIDENT ACTION PLAN IS BEING USED AND FOLLOWED.**

# MEDICAL PLAN (ICS 206 WF)

1. Incident/Project Name		2. Operational Period						
Chuweah Creek Fire		Date/Time July 17-18, 2021 0600-0600						
3. Ambulance Services								
Name	Complete Address	Phone	Advanced Life Support (ALS) Yes No					
Colville Tribal EMS Nespelem, WA	410 10 <sup>th</sup> St. Nespelem, WA 99155	Dispatch 509-978-9323			x			
Lifeline Ambulance	912 Koala Ave Omak, WA 98841	Dispatch 509-663-8091		x				
4. Air Ambulance Services								
Name	Phone	Type of Aircraft & Capability						
Airlift Northwest	800-426-2430 or 911	Rotor in Wenatchee						
Life Flight Network	800-232-0911	2 Rotors, 1 Fixed Wing, Spokane						
5. Hospitals								
Name Complete Address	GPS Datum – WGS 84 Coordinate Standard Degrees Decimal Minutes DD° MM.MMM' N - Lat DD° MM.MMM' W - Long		Travel Time From ICP Air Gnd		Phone	Helipad Yes No		Level of Care Facility
	Lat:	Long:						
Coulee Medical Center 411 Fortuyn Rd Grand Coulee, WA 99133	Lat:	44°56.5186'N	20 Min	40 Min	509-633-1753	X		Level 4 Trauma
	Long:	119°0.4333'W						
	VHF:							
Confluence Health Hospital (Central Washington Hospital) 1201 S Miller St. Wenatchee, WA 98801	Lat:	47°24.4340'N	1 Hr	2Hr	509-662-1511	X		Level 2 Trauma
	Long:	120°19.3664'W						
	VHF:							
Mid-Valley Hospital 912 Koala Ave Omak, WA 98841	Lat:	48°23.8336'N	40 Min	1 Hr 14min	509-826-1760	X		Level 4 Trauma
	Long:	119°32.8758						
	VHF :							
Harborview Medical 325 9 <sup>th</sup> Ave Seattle, WA 98104	Lat:	47°36.1897'N	2 Hr	4 Hr	541-222-6929	X		Level 1 Trauma Burn Center
	Long:	122°19.4759'W						
	VHF:							
6. Division   Branch   Group		Capability	Personnel					
Div D/G		ALS Ambo 1 Lifeline (E-17)						
Div A/Z		BLS Ambo 3 Greys Harbor (E113) EMT 2 Brantner (E-19)						
Div K/W								
Night Shift		ALS Ambo 2 Lifeline (E 92) Medic 3 Spendlove (O-93), EMT 1 Landrum (E-18)						
7. Prepared By (Medical Unit Leader)		8. Date/Time	9. Reviewed By (Safety Officer)		10. Date/Time			
Eamonn Ryan, Lee Venning <i>Eamonn Ryan</i>		7-16-2021 1800	Jack Cates <i>Jack Cates</i>		7-16-2021 1800			

# MEDICAL PLAN (ICS 206 WF)

Controlled Unclassified Information//Basic

## Medical Incident Report

**FOR A NON-EMERGENCY INCIDENT, WORK THROUGH CHAIN OF COMMAND TO REPORT AND TRANSPORT INJURED PERSONNEL AS NECESSARY.**

**FOR A MEDICAL EMERGENCY: IDENTIFY ON SCENE INCIDENT COMMANDER BY NAME AND POSITION AND ANNOUNCE "MEDICAL EMERGENCY" TO INITIATE RESPONSE FROM IMT COMMUNICATIONS/DISPATCH.**

Use the following items to communicate situation to communications/dispatch.

**1. CONTACT COMMUNICATIONS / DISPATCH (Verify correct frequency prior to starting report)**

*Ex: "Communications, Div. Alpha. Stand-by for Emergency Traffic."*

**2. INCIDENT STATUS: Provide incident summary (including number of patients) and command structure.**

*Ex: "Communications, I have a Red priority patient, unconscious, struck by a falling tree. Requesting air ambulance to Forest Road 1 at (Lat./Long.) This will be the Trout Meadow Medical, IC is TFLD Jones. EMT Smith is providing medical care."*

Severity of Emergency / Transport Priority	<input type="checkbox"/> RED / PRIORITY 1 Life or limb threatening injury or illness. Evacuation need is IMMEDIATE <i>Ex: Unconscious, difficulty breathing, bleeding severely, 2° – 3° burns more than 4 palm sizes, heat stroke, disoriented.</i> <input type="checkbox"/> YELLOW / PRIORITY 2 Serious Injury or illness. Evacuation may be DELAYED if necessary. <i>Ex: Significant trauma, unable to walk, 2° – 3° burns not more than 1-3 palm sizes.</i> <input type="checkbox"/> GREEN / PRIORITY 3 Minor Injury or illness. Non-Emergency transport <i>Ex: Sprains, strains, minor heat-related illness.</i>	
Nature of Injury or Illness & Mechanism of Injury		<i>Brief Summary of Injury or Illness (Ex: Unconscious, Struck by Falling Tree)</i>
Transport Request		<i>Air Ambulance / Short Haul/Hoist Ground Ambulance / Other</i>
Patient Location		<i>Descriptive Location &amp; Lat. / Long. (WGS84)</i>
Incident Name		<i>Geographic Name + "Medical" (Ex: Trout Meadow Medical)</i>
On-Scene Incident Commander		<i>Name of on-scene IC of Incident within an Incident (Ex: TFLD Jones)</i>
Patient Care		<i>Name of Care Provider (Ex: EMT Smith)</i>

**3. INITIAL PATIENT ASSESSMENT: Complete this section for each patient as applicable (start with the most severe patient)**

Patient Assessment: See IRPG page 106

Treatment:

**4. TRANSPORT PLAN:**

Evacuation Location (if different): (Descriptive Location (drop point, intersection, etc.) or Lat. / Long.) Patient's ETA to Evacuation Location:

Helispot / Extraction Site Size and Hazards:

**5. ADDITIONAL RESOURCES / EQUIPMENT NEEDS:**

*Example: Paramedic/EMT, Crews, Immobilization Devices, AED, Oxygen, Trauma Bag, IV/Fluid(s), Splints, Rope rescue, Wheeled litter, HAZMAT, Extrication*

**6. COMMUNICATIONS: Identify State Air/Ground EMS Frequencies and Hospital Contacts as applicable**

Function	Channel Name/Number	Receive (RX)	Tone/NAC *	Transmit (TX)	Tone/NAC *
COMMAND					
AIR-TO-GRND					
TACTICAL					

**7. CONTINGENCY: Considerations: If primary options fail, what actions can be implemented in conjunction with primary evacuation method? Be thinking ahead.**

**8. ADDITIONAL INFORMATION: Updates/Changes, etc.**

**REMEMBER:** Confirm ETA's of resources ordered. Act according to your level of training. Be Alert. Keep Calm. Think Clearly. Act Decisively.

Controlled Unclassified Information//Basic