

Incident Action Plan CHUWEAH CREEK FIRE

WA-COA-200084

N5RG [P] (1522)
221 KPA

July 22-23, 2021

0600-1800 Day Operational Period
1800-0600 Night Operational Period



DOWNLOAD
IAP



SCAN TO
CHECK IN

<https://bit.ly/2Rr545v>



DOWNLOAD
MAPS



NORTHWEST INCIDENT MANAGEMENT TEAM



IC - CA IMT10
Daren Dalrymple



Council Chairman
Andy Joseph



Governor
Jay Inslee



IC - NW IMT12
Bobby Shindelar


This page intentionally left blank.



INCIDENT OBJECTIVES (ICS 202)

1. Incident Name:	2. Operational Period: DAY/NIGHT	
CHUWEAH CREEK FIRE	Date/Time From: 07/22/2021 0600 THU	Date/Time To: 07/23/2021 0600 FRI
3. Objective(s):		
<p>Implement risk management practices for the safety of firefighters, other responders and the public as the first priority.</p> <p>Minimize impacts to private property, critical infrastructure, timber, cultural and natural resources including water, fish, wildlife, and range land.</p> <p>Maintain and strengthen community relationships and provide timely fire information to the public and cooperators.</p> <p>Establish and maintain all current COVID-19 mitigation protocols according to CDC guidelines.</p>		
4. Operational Period Command Emphasis:		
Implement direct suppression tactics where safe to do so to minimize fire size, protect timber values and private property.		
General Situational Awareness:		
Monitor the weather conditions and base all actions on current and expected fire behavior.		
5. Site Safety Plan Required? Yes <input type="checkbox"/> No <input checked="" type="checkbox"/>		
Approved Site Safety Plan(s) Located		
6. Incident Action Plan (the items checked below are included in this Incident Action Plan):		
<input checked="" type="checkbox"/> ICS 202 <input type="checkbox"/> ICS 207 <input checked="" type="checkbox"/> ICS 203 <input type="checkbox"/> ICS 208 <input checked="" type="checkbox"/> ICS 204 <input checked="" type="checkbox"/> ICS 220 <input checked="" type="checkbox"/> ICS 205 <input checked="" type="checkbox"/> Map/Chart <input type="checkbox"/> ICS 205A <input checked="" type="checkbox"/> Weather Forecast/Tides/Currents <input checked="" type="checkbox"/> ICS 206	Other Attachments: <input checked="" type="checkbox"/> HR MESSAGE _____ <input type="checkbox"/> _____ <input type="checkbox"/> _____ <input type="checkbox"/> _____	
7. Prepared by: HOWARD JOHNSON Position/Title: PSC2	Signature: <i>Howard Johnson</i>	
8. Approved by Incident Commander:	Name: BOBBY SHINDELAR	Signature: <i>Bobby Shindelar</i>
ICS 202	IAP Page	Date/Time: 07/21/2021 2000

ORGANIZATION ASSIGNMENT LIST (ICS 203)

1. Incident Name:		2. Operational Period: DAY/NIGHT	
CHUWEAH CREEK FIRE		Date/Time From: 07/22/2021 0600	THU Date/Time To: 07/23/2021 0600 FRI
3. Incident Commander(s) and Command Staff:		MEDICAL UNIT	EAMMON RYAN; DIANA BRAUN LEE VENNING (T)
IC/UC	BOB SHINDELAR	FOOD UNIT	RUSS HOVEY ALEXANDER LILLA
SAFETY OFFICER	KEITH WAKEFIELD; JACK CATES TAIJA CORSO (T)	SECURITY UNIT	
INFORMATION OFFICER	MARY BEAN; ROLAND EMETAZ KATHY MOSES		
LIAISON OFFICER	SCOTT CRAWFORD		
HUMAN RESOURCE SPECIALIST	SUSIE MANEZES		
HEALTH LIAISON	LIV STECKER	7. Operations Section:	
		OPS SECTION CHIEF	AARON ROWE
		PLANNING OPS	KURT RANTA (T)
4. Agency/Organization Representative(s):			
Agency/Organization	Name		
DNR AREP	PAT RYAN	DIVISION/GROUP	A/Z RICK WOODALL
BIA COLVILLE AGENCY AREP	JOSEPH HOLFORD	DIVISION/GROUP	D MATT KENNEDY
		DIVISION/GROUP	G LARRY LEACH
		DIVISION/GROUP	K/W BOB HINDS
		DIVISION/GROUP	NIGHT MICHAEL JACKSON
5. Planning Section:		7b. Air Operations Branch:	
CHIEF	HOWARD JOHNSON	AIR OPS BRANCH DIRECTOR	MIKE DAVIS (VIRTUAL)
DEPUTY	ERIC BLACK	AIR SUPPORT SUPERVISOR	TIM LYDA
RESOURCES UNIT	JILL JOHNSON	AIR ATTACK SUPERVISOR	MATT WOOSLEY
SITUATION UNIT	DAVE WISCHER	HELICOPTER COORDINATOR	
DEMOBILIZATION UNIT	MIKE HESTON	AIR TANKER COORDINATOR	
GIS SPECIALIST	SHAWN BUSHNELL	8. Finance/Administration Section:	
TECHNOLOGY SUPPORT SPECIALIST	GEORGE JENKINS	CHIEF	CHERI FULLER CHRISTINA GOEBEL (T)
INCIDENT METEOROLOGIST	BOB TOBIN	TIME UNIT	CAROL LONG
FIRE BEHAVIOR ANALYST	DON STRAND	PROCUREMENT UNIT	MARK BOHNET
		COST UNIT	KATHLEEN HIGH
		ICPI	ROB HECHINGER
6. Logistics Section:			
CHIEF	DAN SOPTICH		
DEPUTY	KEVIN HAUGHTON		
SUPPLY UNIT	JOHN KAUPA		
FACILITIES UNIT	MIKE RENDON		
GROUND SUPPORT UNIT	DAVE HARSH		
COMMUNICATIONS UNIT	MISSY PARKER		
9. Prepared By:	Name: JILL JOHNSON	Position/Title: RESL	Signature: 
ICS 203	IAP Page	Date/Time: 07/21/2021 2000	

Fire Weather Forecast

FORECAST NO: 9
PREDICTION FOR: Thursday
Shift Date: July 22-23, 2021 0600-0600
TIME AND DATE
FORECAST ISSUED: 7/21/2021 at 2000

INCIDENT: Chuweah Creek Fire
UNIT: Colville Reservation
SIGNED: Bob Tobin
Incident Meteorologist (IMET)

Weather Discussion: It will be cool, dry and unstable behind the exiting cold front. Relative humidity will remain below normal and temperatures will cool to near or just below seasonal normal. Winds will once again come around to the southwest and are not expected to be quite as gusty as Tuesday and Wednesday. High pressure will once again strengthen late on Thursday for a warming trend Friday through the weekend. Then we start to game all over again as another weather disturbance is expected the first part of next week.

WEATHER FORECAST:

Today:

SKY/WEATHER: Sunny and not so warm.
High Temperature...72-76 above 2500 feet...82-86 below 2500 feet.
24hr Change...Down...4-6 degrees.
Min RH.....10-15% above 2500 feet...8-12% below 2500 feet
24hr Change...Up...1-2 percent.
20-FOOT WINDS: Southwest-west 10-12 mph with gusts around 25 mph.
CWR (>=0.10")...0% **LAL....**1 **Haines Index...**5 (Moderate) **Mixing Height...**6900 ft AGL

Tonight:

Weather: Clear. Areas of smoke.
Low Temperature...55-60.
Max RH.....35-50%
20-FOOT WINDS: Becoming northwest-north 5-9 mph after 2300.
CWR (>=0.10")...0% **LAL...**1.

Friday:

SKY/WEATHER: Sunny.
High Temperature...77-82 above 2500 feet...85-90 below 2500 feet.
Min RH.....10-15% above 2500 feet...10-15% below 2500 feet
20-FOOT WINDS: Southwest-west winds 10-12 mph..
CWR (>=0.10")...0% **LAL....**1 **Haines Index...**4 (Low) **Mixing Height...**7200 ft AGL

Extended Outlook

Saturday...Sunny and warmer. Low: 56-60...High: 85-94. Min RH: 10-15% Winds: southwest 8-10 mph with gusts to 20 mph.

Sunday...Sunny. Low: 60-65...High: 85-95. Min RH: 10-15% Winds: Southwest 8-10 mph.

FIRE BEHAVIOR FORECAST

FORECAST NUMBER: 9	TYPE OF FIRE: Wildland
FIRE NAME: Chuweah Creek	OPERATIONAL PERIOD: July 22-23, 2021. 0600-0600
DATE ISSUED: July 21, 2021	TIME ISSUED: 1800
UNIT: WA-COA	Don Strand FBAN

INPUTS

WEATHER SUMMARY: Sunny. Haines 5. Max Temps near 86 with min RH near 8%. Winds SW 10-12 mph gusts to 25 mph.

OUTPUTS

FIRE BEHAVIOR

GENERAL:

- Fuels: Dead fuels moistures continue to be very dry. Live fuels are drying and becoming more available to burn.
- Fire behavior potential remains very high. Haines 5 will contribute to fire potential the atmosphere being more unstable. Potential exists for active fire behavior in the afternoon/evening where wind/topography align and have available fuels. Fire activity will continue most of the night in the thermal belt. ERC's will continue to be near the 97percentile. Fuels are mixed grass, brush, conifer with grass and brush understory with areas of light logging slash.
- Probability of Ignition will approach 80% today unshaded. Maximum spotting distance approaching 0.2 mile. Expect continued backing, flanking fire spread with occasional upslope movement. Flare up potential exists in areas of dirty burns where live fuels close to surface have been heat treated previously, torching likely

Specific:

DIV: D. Expect fire to back and flank with occasional short runs. In limited areas where afternoon winds align with topography, potential for torching runs with spotting exist. Watch for hold over spot fires.

Incident 90 Fire: Fire is in a harvest unit with pockets of pine regeneration, grass and brush. Fire is continuing to clean up surface debris and consume unburned interior fuels. Expect squirrely winds at times to contribute possible flare ups and spotting.

DIV: G: Expect backing and flanking fire behavior. Potential for isolated torching in areas with dirty burns. On steeper slopes, watch for roll outs carrying burning material down slope below your location.

DIV: K/W. Expect areas unburned areas west of Keller Butte Road to continue to clean up with surface fire spread and occasional torching. Continue to watch for spot fires. On steeper slopes, watch for roll outs.

INITAIL ATTACK: In the event resources are assisting with local IA, update your SA to your new work area. Remember, the light flashy fuels can quickly change directions of spread and rapidly accelerate. Rates of spread in grass and brush can be much faster than firefighters can move.

AIR OPERATIONS: Watch for turbulence in the complex terrain.

SAFETY

Haines 5 of or higher days can contribute to fires becoming very active.

Stump holes burning deep.

Watch for increased fire activity with wind slope alignment.

Areas of dirty burns with heat treated brush have potential for reburn.

Dozer and road berms have potential to hold heat.



16.GETTING FREQUENT SPOT FIRES ACROSS LINE

Safety Message

22-23 July 2021

INCIDENT: Chuweah Creek

OPERATIONAL PERIOD: 0600-0600

TOPICS:

MISSION CREEP

Mission Creep is the expansion of a mission or task beyond original objectives or assignment. In our business this is most often undesirable unless serious life considerations are at risk. Many times Mission Creep will continue once started until catastrophic failure or undesirable outcomes are encountered. Plans are built based on set and measurable objectives. Stay in your lane and avoid the urge to creep!

HYDRATION/NUTRITION

- * Drink fluids throughout operational period (water and Gatorade) not energy drinks
- * Rotate crews out of smoky areas
- * Follow work / rest guidelines
- * Set a reasonable work pace and allow adequate rest breaks
- * Use buddy system to monitor personnel of heat related and fatigue issues
- * For Heat Related Injuries refer to IRPG pg.109
- * Ensure adequate caloric intake.



Remember: SLOW IS SMOOTH, SMOOTH IS FAST

SAFETY OFFICER: Jack Cates, Keith Wakefield, Taija Corso (T)

Deliberate Risk Assessment-Hazard Summary

22-23 July 2021

Hazard	Mitigation	Post Risk
Viral Transmission Mitigations, Communicable Disease	Maintain awareness of health, perform self-checks, maintain social distancing, and wear face coverings in accordance with CDC recommendations. Report and isolate if not feeling well.	Low
Extraction Time	Identify medivac sites and helispots. Initiate ground transport to accident site. Identify EMT/EMTP from resources assigned to division. Provide line qualified paramedics to each division as available. Review IWI protocol to ensure familiarity. Utilize civilian medivac as treatment/timing dictates. Evaluate on-going need for repositioning medical personnel.	High
Steep Terrain/Gravity	Do not work crews above or below each other. Post lookouts for rolling material. Watch footing in loose soil, rock and around vegetation. Do not work below heavy equipment. Scout and identify travel routes. Establish LCES.	Moderate
Hazard Trees	Use avoidance to limit exposure time. Snag ahead to avoid exposure. Use qualified fallers, blasting, or alternate methods if needed. Conduct on-going risk analysis of all work areas. Follow Hazard Tree Safety Guidelines (IRPG page 22).	High
Communication	Evaluate for dead zones prior to engagement. Utilize human repeaters as needed. Ensure accountability of resources in problem areas.	Low
Physical Factors	Maintain hydration schedule. Closely monitor work rate and implement rest periods. Maintain nutrition. Ensure adequate work/rest.	Moderate
Environmental Factors	Assign medical personnel to camp. Assess for known allergies and report to medical personnel. Obtain Bee Bopper/wasp spray and yellow jacket traps. Maintain an awareness of livestock. Keep an eye out for wildlife including bears, cougars, and rattlesnakes.	Moderate
Fire Behavior	Be aware of burn windows and weather impacts and min/max RH for flashy fuels/local conditions. Be aware of increased fire behavior and concerns specific to thunderstorm safety (IRPG p. 21). Report changes to FBAN and IMET. Include thunderstorm safety message in IAP.	Moderate
Unburned Fuels/Firing Ops	Establish LCES. Ensure management action points are implemented and followed. Weather updates as needed during burning operations. Locate indirect firelines to minimize the amount of unburned fuels. Follow Interagency Ignition Guide. Ensure communications between all firing operations. Establish road security at all firing sites. Follow approved firing plan for unburned fuels.	Moderate
Transportation	Signing of all incident roads that provide access to divisions. Daily updated travel plan maps. Practice defensive driving. In local communities obey the posted speed limits. Use reader boards to control entry as needed. Identify and evaluate contingency and alternate escape and travel routes.	Moderate
Aircraft	Utilize Air Attack. Ensure all resources are a safe distance from all bucket and retardant drops. Establish LCES. Utilize air to ground primary radio channel. Reference IRPG (Safe aircraft operations pg. 56-58). Ensure IA resources have coordination with unassigned local air resources to provide deconfliction.	High
Heavy Equipment	Post lookouts around equipment work areas. Establish communications with equipment boss and operator. Do not work down slope from equipment.	High
Public Interaction	Place new road closures as necessary and maintain current closures. Maintain awareness of evacuation areas and provide accurate information dissemination.	Low
Initial Attack	Ensure identified IA resources are briefed of expectations and ensure communication plan is provided. Ensure resources are briefed on IA command structure. Provide identified crews with area maps.	Moderate
Uncoordinated Resources/Efforts, Communication with adjacent incident	Coordinate Aviation and Operations efforts with adjacent incidents. Schedule daily check-ins. Share maps, IAPS, and 209's. Coordinate Initial Attack response. Share 205 and use back up tac and command channels.	Low

Division/Group Assignment List (ICS 204 WF)
Controlled Unclassified Information//Basic

1. Incident Name:				3.		
CHUWEAH CREEK FIRE				Branch:	Division/Group A/Z	
2. Operational Period: DAY/NIGHT						
Date/Time From: 07/22/2021 0600 THU		Date/Time To: 07/23/2021 0600 FRI				
4. Operations Personnel						
OPERATIONS CHIEF		AARON ROWE KURT RANTA (T)		DIVISION/GROUP SUPERVISOR		RICK WOODALL
AIR SUPPORT SUPERVISOR		TIM LYDA		SAFETY OFFICER		KEITH WAKEFIELD JACK CATES; TAIJA CORSO (T)
5. Resources Assigned this Period						
Strike Team / Task Force / Resource Designator		LWD	Leader	Number Persons	Drop Off PT./Time	Pick Up PT./Time
E-11 ENG6 SILVER TIP FORESTRY 21		07/26	CASEY LOUIE	3	ICP/0600	ICP/1800
E-104 ENG6 LATE SUMMERS WF 03		07/30	ETHAN MELVILLE	3	ICP/0600	ICP/1800
E-19 EMTF 2		07/27	TOM BRANTNER	1	ICP/0600	ICP/1800
6. Control Operations/Work Assignments:						
<p>TASK - Patrol structures and fire perimeter. PURPOSE - Protect property and resources. END STATE - Fire is contained within the current perimeter and the threat to structures is eliminated.</p>						
7. Special Instructions:						
Utilize direct line tactics where possible. Burn out indirect line as needed.						
8. Division/Group Communication Summary						
Function	Channel	RX Frequency N/W	RX Tone/NAC	TX Frequency N/W	TX Tone/NAC	Mode
COMMAND	6	159.4275	192.8	151.2725	192.8	A
COMMAND	7	170.4500	123.0	168.1000	123.0	A
TACTICAL	1	168.0500	123.0	168.0500	123.0	A
AIR TO GROUND	14	171.6750		171.6750		A
9. Prepared By (Resource Unit Leader)			Approved By (Planning Section Chief)		Date	Time
JILL JOHNSON			HOWARD JOHNSON		07/21/2021	2000

Division/Group Assignment List (ICS 204 WF)
Controlled Unclassified Information//Basic

1. Incident Name:				3.		
CHUWEAH CREEK FIRE				Branch:	Division/Group D	
2. Operational Period: DAY/NIGHT						
Date/Time From: 07/22/2021 0600 THU		Date/Time To: 07/23/2021 0600 FRI				
4. Operations Personnel						
OPERATIONS CHIEF		AARON ROWE KURT RANTA (T)		DIVISION/GROUP SUPERVISOR		MATT KENNEDY
AIR SUPPORT SUPERVISOR		TIM LYDA		SAFETY OFFICER		KEITH WAKEFIELD JACK CATES; TAIJA CORSO (T)
5. Resources Assigned this Period						
Strike Team / Task Force / Resource Designator		LWD	Leader	Number Persons	Drop Off PT./Time	Pick Up PT./Time
O-1.67 SOF2		07/27	JOSH NORTHRUP	1	ICP/0600	ICP/1800
O-46 SOFR		07/29	DAN GARNER	1	ICP/0600	ICP/1800
O-31 TFLD (T)		07/29	CHARLES DAVIS	1	ICP/0600	ICP/1800
O-124 TFLD		07/30	GREGORY ANDERSON	1	ICP/0600	ICP/1800
O-9 HEQB		07/29	JEREMY HUNT	1	ICP/0600	ICP/1800
O-94 HEQB		07/28	NICHOLAS HARPER	1	ICP/0600	ICP/1800
O-95 HEQB (T)		07/29	ASA RAY	1	ICP/0600	ICP/1800
O-155 FMOD ATHERLY CONTRACTING		08/01	CODY HENDERSON	2	ICP/0600	ICP/1800
O-156 FMOD SWEDBERG CONTRACTING		08/02	RICHARD SMALLEY	2	ICP/0600	ICP/1800
C-12 HC1 SILVER CITY IHC		07/31	JUSTIN ROMERO	21	ICP/0600	ICP/1800
C-6 HC2 PACIFIC OASIS #1		07/29	JAMES SPRIGGS	20	ICP/0600	ICP/1800
C-7 HC2 SUNSET FORESTRY 1		07/29	ADAN MEJIA	20	ICP/0600	ICP/1800
E-9 ENG6 SILVER TIP FORESTRY 21		07/26	JEREMY TAYLOR	3	ICP/0600	ICP/1800
E-16 ENG6 THE GENERAL BR 102		08/03	FRANK BRAUN	2	ICP/0600	ICP/1800
E-97 ENG5 UTTING CONSTRUCTION 04		07/30	TYLER NELSON	3	ICP/0600	ICP/1800
E-99 ENG4 TORRES CONTRACTING 9		07/30	JOHN MARTINEZ	3	ICP/0600	ICP/1800
E-100 ENG4 COOPER CONTRACTING 14		07/30	CODY BURWELL	3	ICP/0600	ICP/1800
E-109 ENG6 BAILEY ENTERPRISES		07/29	MIKE OJANEN	3	ICP/0600	ICP/1800
E-110 ENG6 PACIFIC NW WILDFIRE 1		07/29	WILLIAM WELSH	3	ICP/0600	ICP/1800
8. Division/Group Communication Summary						
Function	Channel	RX Frequency N/W	RX Tone/NAC	TX Frequency N/W	TX Tone/NAC	Mode
COMMAND	6	159.4275	192.8	151.2725	192.8	A
TACTICAL	2	168.2000	123.0	168.2000	123.0	A
AIR TO GROUND	14	171.6750		171.6750		A
9. Prepared By (Resource Unit Leader)			Approved By (Planning Section Chief)		Date	Time
JILL JOHNSON			HOWARD JOHNSON		07/21/2021	2000

Division/Group Assignment List (ICS 204 WF)
Controlled Unclassified Information//Basic

1. Incident Name:				3.		
CHUWEAH CREEK FIRE				Branch:	Division/Group D	
2. Operational Period: DAY/NIGHT						
Date/Time From: 07/22/2021 0600 THU		Date/Time To: 07/23/2021 0600 FRI				
4. Operations Personnel						
OPERATIONS CHIEF		AARON ROWE KURT RANTA (T)		DIVISION/GROUP SUPERVISOR		MATT KENNEDY
AIR SUPPORT SUPERVISOR		TIM LYDA		SAFETY OFFICER		KEITH WAKEFIELD JACK CATES; TAIJA CORSO (T)
5. Resources Assigned this Period						
Strike Team / Task Force / Resource Designator		LWD	Leader	Number Persons	Drop Off PT./Time	Pick Up PT./Time
E-125 ENG6 LAVA RIVER FORESTRY		08/02	RAUL HERRA	3	ICP/0600	ICP/1800
E-87 SKG3 TUNK CREEK 4		07/28	JACK OBRYAN	2	ICP/0600	ICP/1800
E-1 WT2 INNES WOOD PRODUCTS		07/27	SCOTT DAWSON	1	ICP/0600	ICP/1800
E-82 WT2 ASPEN MTN RESOURCES 10		07/29	TYLER OWEN	1	ICP/0600	ICP/1800
E-83 WT2 ASPEN MTN RESOURCES 14		07/29	WARREN HANSEN	1	ICP/0600	ICP/1800
E-23 DOZ3 TIGER TRUCKING		07/27	CODY HASTING	2	ICP/0600	ICP/1800
E-80 DOZ2 IRON TRIANGLE		07/28	JOSH MOULTON	2	ICP/0600	ICP/1800
E-123 DOZ3 MCCLURE EQUIPMENT		07/26	GARY MCCLURE	3	ICP/0600	ICP/1800
E-56 UTV TOP GUN			-NONE-			
E-129 UTV TOP GUN			-NONE-			
E-130 UTV TOP GUN			-NONE-			
E-113 BLS AMBU3 GRAYS HARBOR		07/29	CARLTON RHOADES	2	ICP/0600	ICP/1800
6. Control Operations/Work Assignments:						
<p>TASK - Anchor and flank the fire perimeter from A/D division break, south to the D/G division break. Secure Incident 90. PURPOSE - Protect property and resources north of fire perimeter. END STATE - Fire is contained north of Cache Creek Rd. Incident 90 lined and secured. Structures secured south of Cache Creek Rd.</p>						
7. Special Instructions:						
Utilize direct line tactics where possible. Burn out indirect line as needed.						
8. Division/Group Communication Summary						
Function	Channel	RX Frequency N/W	RX Tone/NAC	TX Frequency N/W	TX Tone/NAC	Mode
COMMAND	6	159.4275	192.8	151.2725	192.8	A
TACTICAL	2	168.2000	123.0	168.2000	123.0	A
AIR TO GROUND	14	171.6750		171.6750		A
9. Prepared By (Resource Unit Leader)			Approved By (Planning Section Chief)		Date	Time
JILL JOHNSON			HOWARD JOHNSON		07/21/2021	2000

Division/Group Assignment List (ICS 204 WF)
Controlled Unclassified Information//Basic

1. Incident Name:				3.		
CHUWEAH CREEK FIRE				Branch:	Division/Group G	
2. Operational Period: DAY/NIGHT						
Date/Time From: 07/22/2021 0600 THU		Date/Time To: 07/23/2021 0600 FRI				
4. Operations Personnel						
OPERATIONS CHIEF		AARON ROWE KURT RANTA (T)		DIVISION/GROUP SUPERVISOR		LARRY LEACH
AIR SUPPORT SUPERVISOR		TIM LYDA		SAFETY OFFICER		KEITH WAKEFIELD; JACK CATES; TAIJA CORSO (T)
5. Resources Assigned this Period						
Strike Team / Task Force / Resource Designator		LWD	Leader	Number Persons	Drop Off PT./Time	Pick Up PT./Time
O-1.55 SOF2 (T)		07/27	DON WALLER	1	ICP/0600	ICP/1800
O-46 SOFR		07/29	DAN GARNER	1	ICP/0600	ICP/1800
E-96 ENG6 FIRST STRIKE ENV CO		07/31	GERALD COATS	3	ICP/0600	ICP/1800
E-101 ENG4 AAA THUNDERBOLT FIRE 15		07/31	DAVID BOX	3	ICP/0600	ICP/1800
E-102 ENG6 AZ-CCA ENG 836		08/01	RANDY JUSTUS	3	ICP/0600	ICP/1800
E-105 ENG6 OSPREY WILDFIRE LLC		07/29	KEVIN ROE	3	ICP/0600	ICP/1800
E-108 ENG3 AZ-CEA ENG 66		08/02	BEN D BUCHANAN	4	ICP/0600	ICP/1800
E-121 WTS2 H&H FIRE CONTR SVCS WT1		07/30	TOM FERRO	1	ICP/0600	ICP/1800
E-77 DOZ3 BIA ROADS		07/26	JIM PHILLIPS	2	ICP/0600	ICP/1800
6. Control Operations/Work Assignments:						
<p>TASK - Anchor and flank the fire perimeter from D/G division break south to G/K division break. PURPOSE - Protect natural resources and prevent fire spread toward Hwy 21. END STATE - Fire is contained south of Cache Creek Rd along Keller Butte Rd toward Div K division break.</p>						
7. Special Instructions:						
Utilize direct line tactics where possible. Burn out indirect line as needed.						
8. Division/Group Communication Summary						
Function	Channel	RX Frequency N/W	RX Tone/NAC	TX Frequency N/W	TX Tone/NAC	Mode
COMMAND	6	159.4275	192.8	151.2725	192.8	A
TACTICAL	5	166.7750	123.0	166.7750	123.0	A
AIR TO GROUND	14	171.6750		171.6750		A
9. Prepared By (Resource Unit Leader)			Approved By (Planning Section Chief)		Date	Time
JILL JOHNSON			HOWARD JOHNSON		07/21/2021	2000

Division/Group Assignment List (ICS 204 WF)
Controlled Unclassified Information//Basic

1. Incident Name:				3.		
CHUWEAH CREEK FIRE				Branch:	Division/Group K/W	
2. Operational Period: DAY/NIGHT						
Date/Time From: 07/22/2021 0600 THU		Date/Time To: 07/23/2021 0600 FRI				
4. Operations Personnel						
OPERATIONS CHIEF		AARON ROWE KURT RANTA (T)		DIVISION/GROUP SUPERVISOR		BOB HINDS
AIR SUPPORT SUPERVISOR		TIM LYDA		SAFETY OFFICER		KEITH WAKEFIELD JACK CATES; TAIJA CORSO (T)
5. Resources Assigned this Period						
Strike Team / Task Force / Resource Designator		LWD	Leader	Number Persons	Drop Off PT./Time	Pick Up PT./Time
O-1.66 SOF2		07/27	JOHN BARNES	1	ICP/0600	ICP/1800
O-112 TFLD (T)		07/29	GARY HUGHES	1	ICP/0600	ICP/1800
O-152 FELB		07/31	HENRY KUEHNE	1	ICP/0600	ICP/1800
O-122 FMOD BAILEY LOGGING		07/29	JOSH NEWMAN	2	ICP/0600	ICP/1800
O-123 FMOD BROTHERS FIRE LLC		07/29	TOM HOFFMAN	2	ICP/0600	ICP/1800
C-4 HC2I RSF - NWR1		07/29	JOSEPH WELBURN	20	ICP/0600	ICP/1800
C-5 HC2 PACIFIC COAST CONTRACTING		07/29	NORBERTO PANTALEON	20	ICP/0600	ICP/1800
C-13 HC2I NMCIF - MT. TAYLOR		07/31	ERIC MCKENNA	18	ICP/0600	ICP/1800
E-93 ENG4 BASIN WILDLAND RESPONSE B1		07/30	JOHN SCHALO	3	ICP/0600	ICP/1800
E-95 ENG3 WHETSTONE 322		08/03	DANIEL SPEER	4	ICP/0600	ICP/1800
E-98 ENG4 A TEAM WILDFIRE		07/30	RICK SCHMITTLE	2	ICP/0600	ICP/1800
E-103 ENG6 LATE SUMMERS WF 05		07/29	DUANE REESE	3	ICP/0600	ICP/1800
E-106 ENG6 TIMBERMANS QUAL TREE SVC 2		07/29	JACK HENDRIX	3	ICP/0600	ICP/1800
E-107 ENG5 LATE SUMMERS WF 4		08/01	JOSH CROLLARD	3	ICP/0600	ICP/1800
E-88 SKG3 SKIDGINE		07/28	SCOTT SHINALL	2	ICP/0600	ICP/1800
E-76 WT2 BIA ROADS T3		07/26	KERRY CARDEN	1	ICP/0600	ICP/1800
8. Division/Group Communication Summary						
Function	Channel	RX Frequency N/W	RX Tone/NAC	TX Frequency N/W	TX Tone/NAC	Mode
COMMAND	7	170.4500	123.0	168.1000	123.0	A
TACTICAL	3	168.6000	123.0	168.6000	123.0	A
AIR TO GROUND	14	171.6750		171.6750		A
9. Prepared By (Resource Unit Leader)			Approved By (Planning Section Chief)		Date	Time
JILL JOHNSON			HOWARD JOHNSON		07/21/2021	2000

Division/Group Assignment List (ICS 204 WF)
Controlled Unclassified Information//Basic

1. Incident Name:			3.			
CHUWEAH CREEK FIRE			Branch:		Division/Group	
2. Operational Period: DAY/NIGHT					K/W	
Date/Time From: 07/22/2021 0600 THU		Date/Time To: 07/23/2021 0600 FRI				
4. Operations Personnel						
OPERATIONS CHIEF		AARON ROWE KURT RANTA (T)		DIVISION/GROUP SUPERVISOR		BOB HINDS
AIR SUPPORT SUPERVISOR		TIM LYDA		SAFETY OFFICER		KEITH WAKEFIELD JACK CATES; TAIJA CORSO (T)
5. Resources Assigned this Period						
Strike Team / Task Force / Resource Designator		LWD	Leader	Number Persons	Drop Off PT./Time	Pick Up PT./Time
E-84 WTS2 RAINS CONTRACTING 3		07/29	JIM HUTTON	1	ICP/0600	ICP/1800
E-85 WTS2 ALL WET WATER TRUCKING		07/30	WILLIAM HOOVER	1	ICP/0600	ICP/1800
E-24 DOZ3 JONES LOGGING		07/27	JASON JONES	2	ICP/0600	ICP/1800
E-57 UTV			-- NONE --			
E-17 ALS AMBU 1 LIFELINE		07/27	HEIDI LARSON	2	ICP/0600	ICP/1800
E-134 UTV (MEDICAL ONLY)			AMBU 1 STAFF USE AS NEEDED			
6. Control Operations/Work Assignments:						
TASK - Anchor and flank the fire perimeter from W/K division break to the K/G division break. PURPOSE - Protect natural resources and property southeast of the fire. END STATE - The fire is contained northeast of Buffalo Lake and west of Keller Butte Rd.						
7. Special Instructions:						
Utilize direct line tactics where possible. Burn out indirect line as needed.						
8. Division/Group Communication Summary						
Function	Channel	RX Frequency N/W	RX Tone/NAC	TX Frequency N/W	TX Tone/NAC	Mode
COMMAND	7	170.4500	123.0	168.1000	123.0	A
TACTICAL	3	168.6000	123.0	168.6000	123.0	A
AIR TO GROUND	14	171.6750		171.6750		A
9. Prepared By (Resource Unit Leader)			Approved By (Planning Section Chief)		Date	Time
JILL JOHNSON			HOWARD JOHNSON		07/21/2021	2000

Division/Group Assignment List (ICS 204 WF)
Controlled Unclassified Information//Basic

1. Incident Name:			3.			
CHUWEAH CREEK FIRE			Branch:		Division/Group	
2. Operational Period: DAY/NIGHT					NIGHT	
Date/Time From: 07/22/2021 0600 THU		Date/Time To: 07/23/2021 0600 FRI				
4. Operations Personnel						
OPERATIONS CHIEF		AARON ROWE KURT RANTA (T)		DIVISION/GROUP SUPERVISOR		MICHAEL JACKSON
AIR SUPPORT SUPERVISOR		TIM LYDA		SAFETY OFFICER		JACK CATES ; KEITH WAKEFIELD TAIJA CORSO (T)
5. Resources Assigned this Period						
Strike Team / Task Force / Resource Designator		LWD	Leader	Number Persons	Drop Off PT./Time	Pick Up PT./Time
O-49 TFLD			CODY DESUATEL	1	ICP/1800	ICP/0600
E-7 ENG6 NORTHERN COLUMBIA REFOR		07/27	LENORD DENISON	2	ICP/1800	ICP/0600
E-10 ENG6 EARLY WINTERS		08/01	CHRIS SURFACE	3	ICP/1800	ICP/0600
E-12 ENG6 AEGIS LOGISTICS		07/27	ROY VARENEY	3	ICP/1800	ICP/0600
E-13 ENG6 AEGIS LOGISTICS		07/27	KERRI HENDRIX	3	ICP/1800	ICP/0600
E-94 ENG4 UTTING CONSTRUCTION		07/30	STEPHEN BAILEY	3	ICP/1800	ICP/0600
E-53 WTS3 JRD CONSTRUCTION		07/28	GILBERT DESUATEL	1	ICP/1800	ICP/0600
E-76 WTS2 BIA		07/26	BLAIN COVINGTON	1	ICP/1800	ICP/0600
E-22 DOZ3 PUMPER CAT		07/26	DARRELL GREEN	2	ICP/1800	ICP/0600
E-77 DOZ3 BIA		07/26	GEORGE BATTEN	2	ICP/1800	ICP/0600
E-123 DOZ3 MCCLURE		07/29	DON WILSON	2	ICP/1800	ICP/0600
E-92 ALS AMBU 2		07/29	TAYLOR MORROW	2	ICP/1800	ICP/0600
E-18 EMT1		07/27	MARA LANDRUM	1	ICP/1800	ICP/0600
O-93 EMPF MEDIC 3		07/28	BRIAN SPENDLOVE	1	ICP/1800	ICP/0600
8. Division/Group Communication Summary						
Function	Channel	RX Frequency N/W	RX Tone/NAC	TX Frequency N/W	TX Tone/NAC	Mode
COMMAND	6	159.4275	192.8	151.2725	192.8	A
COMMAND	7	170.4500	123.0	168.1000	123.0	A
TACTICAL	4	166.7250	123.0	166.7250	123.0	A
AIR TO GROUND	14	171.6750		171.6750		A
9. Prepared By (Resource Unit Leader)			Approved By (Planning Section Chief)		Date	Time
JILL JOHNSON			HOWARD JOHNSON		07/21/2021	2000

Division/Group Assignment List (ICS 204 WF)
Controlled Unclassified Information//Basic

1. Incident Name:				3.		
CHUWEAH CREEK FIRE				Branch:	Division/Group NIGHT	
2. Operational Period: DAY/NIGHT						
Date/Time From: 07/22/2021 0600 THU		Date/Time To: 07/23/2021 0600 FRI				
4. Operations Personnel						
OPERATIONS CHIEF		AARON ROWE KURT RANTA (T)		DIVISION/GROUP SUPERVISOR		MICHAEL JACKSON
AIR SUPPORT SUPERVISOR		TIM LYDA		SAFETY OFFICER		JACK CATES ; KEITH WAKEFIELD TAIJA CORSO (T)
5. Resources Assigned this Period						
Strike Team / Task Force / Resource Designator		LWD	Leader	Number Persons	Drop Off PT./Time	Pick Up PT./Time
6. Control Operations/Work Assignments:						
<p>Div A/Z TASK - Patrol structures and fire perimeter. PURPOSE - Protect property and resources. END STATE - Fire is contained within the current perimeter and the threat to structures is eliminated.</p> <p>Div D TASK - Anchor and flank the fire perimeter from A/D division break, south to the D/G division break. Secure Incident 90. PURPOSE - Protect resources & property north of fire perimeter. END STATE - Fire is contained north of Cache Creek Rd. Incident 90 lined and secured. Structures secured south of Cache Creek Rd.</p> <p>Div G TASK - Anchor and flank the fire perimeter from D/G division break south to G/K division break. PURPOSE - Protect natural resources and prevent fire spread toward Hwy 21. END STATE - Fire is contained south of Cache Creek Rd along Keller Butte Rd toward Div K division break.</p> <p>Div K/W TASK - Anchor and flank the fire perimeter from W/K division break to the K/G division break. PURPOSE - Protect natural resources and property southeast of the fire. END STATE - The fire is contained northeast of Buffalo Lake and west of Keller Butte Rd.</p>						
7. Special Instructions:						
Utilize direct line tactics where possible. Burn out indirect line as needed.						
8. Division/Group Communication Summary						
Function	Channel	RX Frequency N/W	RX Tone/NAC	TX Frequency N/W	TX Tone/NAC	Mode
COMMAND	6	159.4275	192.8	151.2725	192.8	A
COMMAND	7	170.4500	123.0	168.1000	123.0	A
TACTICAL	4	166.7250	123.0	166.7250	123.0	A
AIR TO GROUND	14	171.6750		171.6750		A
9. Prepared By (Resource Unit Leader)			Approved By (Planning Section Chief)		Date	Time
JILL JOHNSON			HOWARD JOHNSON		07/21/2021	2000

AIR OPERATIONS SUMMARY

PREPARED BY: Tim Lyda

PREPARED DATE/TIME: July 21,1800 hrs

INCIDENT NAME CHUWEAH CR	2. OPERATIONAL PERIOD: Date: 7/22/2021 Helibase Start Time: 0830 End Time: 2030 Sunrise: 0519 Sunset: 2047 (Times valid for Nespelem)
------------------------------------	--

3. REMARKS (Safety Notes, Hazards, Air Operations Special Equipment, etc.): General Aviation, See & Avoid Bucket work, Retardant drops: ensure area is clear of ground personnel before dropping; watch for wires; be aware of potential for turbulence at ridge tops, saddles, canyons, etc *** BE AWARE OF FATIGUE, TAKE LONGER BREAKS WHEN FLYING IN SMOKEY CONDITIONS. *** Report all TFR intrusions to Air Operations, Air Support or Helibase as soon as possible.	4. MEDEVAC A/C: Contact Mt Tolman Fire Center 509-634-3100 Or Chuweah Cr Comm 509-634-2022	5. TFR #1/8801 (A20) Freq: 118.400
---	---	--

6. PERSONNEL LWD	Phone	7. FREQUENCIES	AM	FM	8. FIXED-WING	# Avail / Type/ Make-Model / FAA N# / Base(s)
AOBD: Mike Davis (virtual)	509-699-9350	AIR/AIR Primary (A-6)	118.4000		Fixed Wing/Buckets	DIVS order thru ATGS if up,or Communications
ASGS: Tim Lyda O-1.37	206-473-1425	AIR/AIR Secondary (A-7)	124.025			
HEBM:		AIR/GROUND Primary (A-4)		171.6750	ATGS Aircraft	AA Patrick McCabe 690 Commander N364WA, IA AA Matt Woosely 509-322-5260 500 Commander N531SA (A-54)
HEMG:		AIR/GROUND Secondary (A-5)		156.0225 T-103.5		
ATGS: Matt Woosley O-101	509-322-5260	DNR-AIR/GROUND IA		159.270 T-103.5		
ATGS:		AIR/Ground Ch 51 IA		168.3125	NOTES:	ICP helispot: N48 08 023 W118 59 226
Mt Tolman:	509-634-3100	UNICOM OMAK	122.8			
Debbie Coudell	509-570-4133	DECK				
Michelle	509-675-0675					email costs to timlyda22@gmail.com

9. HELICOPTERS

FAA N#	TY	MAKE/MODE L	BASE	STAR T	AVAI L	REMARKS	FAA N#	TY	MAKE/MODE L	BASE	STAR T	AVAI L	REMARKS
N448JS	1	S-61	OMK	0800	0900	Long Line Bucket	N0CB	1	K MAX	OMK			DNR Lend/Lease Only
N947CH	1	CH-47	OMK	0800	0900	Long Line Bucket							

INCIDENT RADIO COMMUNICATIONS PLAN (ICS 205)

Controlled Unclassified Information//Basic

1. Incident Name:	2. Date/Time Prepared:	3. Operational Period: DAY/NIGHT	
CHUWEAH CREEK FIRE	Date: 07/21/2021 Time: 2000	Date/Time From: 07/22/2021 0600 THU	Date/Time To: 07/23/2021 0600 FRI

4. Basic Radio Channel Use:

Zone Group	Ch #	Function	Channel Name/Trunked Radio System Talkgroup	Assignment	RX Freq	RX Tone/NAC	TX Freq	TX Tone/NAC	Mode (A,D, or M)	Remarks
	1	TACTICAL	TAC 1	DIV A / Z	168.0500	123.0	168.0500	123.0	A	
	2	TACTICAL	TAC 2	DIV D	168.2000	123.0	168.2000	123.0	A	
	3	TACTICAL	TAC 3	DIV K / W	168.6000	123.0	168.6000	123.0	A	
	4	TACTICAL	TAC 4	NIGHT	166.7250	123.0	166.7250	123.0	A	
	5	TACTICAL	TAC 5	DIV G	166.7750	123.0	166.7750	123.0	A	
	6	COMMAND	CMD 6	NORTH	159.4275	192.8	151.2725	192.8	A	CODY BUTTE - LINKED TO CMD 7
	7	COMMAND	CMD 7	SOUTH	170.4500	123.0	168.1000	123.0	A	KELLER LO - LINKED TO CMD 6
	8	COMMAND	CMD 8	BACKUP COMMAND	169.7250	88.5	164.2500	100.0	A	FIRE A - MOSES MTN
	9	COMMAND	KELLER REPEATER	IA	169.7125	136.5	164.1625	123.0	A	FIRE B - KELLER LO
	10	COMMAND	MOSES REPEATER	IA	169.7125	136.5	164.1625	100.0	A	FIRE B - MOSES MTN
	11	TACTICAL	WA REDNET	IA	153.8300		153.8300		A	IA ONLY
	12	TACTICAL	FIRE C TAC	IA	166.9750	151.4	166.9750	151.4	A	IA ONLY
	13	AIR TO GROUND	A/G 51	IA	168.3125		168.3125		A	IA ONLY
	14	AIR TO GROUND	A/G PRI	ALL DIVS	171.6750		171.6750		A	AIR TO GROUND PRIMARY
	15	AIR TO GROUND	A/G SEC	AIR TO GROUND SECONDARY	156.0225	103.5	156.0225	103.5	A	LOW POWER ONLY - NO MOBILES
	16	AIR GUARD	AIRGUARD	AIRGUARD	168.6250		168.6250	110.9	A	EMERGENCY AIR TRAFFIC ONLY

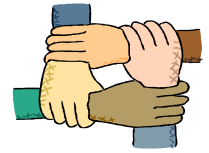
5. Special Instructions:

6. Prepared By (Communications Unit Leader)	Name: MISSY PARKER	Signature: <i>Missy Parker</i>
ICS 205	IAP Page	Date/Time: 07/21/2021 2000

Controlled Unclassified Information//Basic



Human Resource Message



Chuweah Creek Fire

July 22, 2021

RESPECT: Regard for the worth or excellence of a person; proper acceptance or courtesy.

Every interaction is an opportunity to earn the respect of others. I lead by example, treating fellow firefighters with respect, and denouncing disrespect.

- Find and value diverse skills within the team.
- Communicate openly and keep each other informed.
- Look out for the well-being of yourself and colleagues.
- Build Community.



What does Respect mean to you?

Susie Manezes, PNW-Team 12- (HRSP) Contact Number: 602-571-9327
Food Bank Donations will go directly to Nespelem Head Start. Thank you!

*Chuweah Creek Fire
Incident Training Program*

A (Virtual) TNSP is available to help with training related issues and incident documentation for your training assignment.

To receive documented credit for your assignment, Click the link or scan the QR Code below to access and complete the Trainee Registration Form. Once registered you will receive additional instructions via text. For training related questions, call or text Brad Smith (TNSP) at 209-770-4809 or email bradley_smith@firenet.gov (Be sure to list "Chuweah Creek" on any correspondence)

[Chuweah Creek - Trainee Registration Form](#)



LOGISTICS MESSAGE

KITCHEN

Breakfast 0500 – 0900

Dinner 1700-2200

Lunches and ice are available at the refrigerated trailers.

SHOWERS

Open hours

0500 - 1200 and 1400 - 2200

GROUND SUPPORT

Ground Support hours **0600-2200**

Attention WEX card users... Fuel is available in Nespelem at Jacksons Service Station. See ground support for directions.

SUPPLY

Cache hours **0600-2200**

Cache orders prior to 0900 should be delivered same day.

-CAMPING NOTE-

***Attention all personnel camping around the Pow-wow grounds -
All tents need to be set up at least 5 feet from any of the structures/sheds
anywhere in the area. If your tent is already set up within 5 feet, it needs to be
moved at least 5 feet (or more) away from structures.***



Chuweah Creek Fire Finance

FSC2 – Cheri Fuller, FSC2 (T) Christina Goebel

Email : 2021.chuweahcreek.finance@firenet.gov

Phone: 425-495-3420

Hours of operation 0530 – 2200

If you haven't checked in with finance, you need to do so if you would like to be paid. The finance chiefs will be at briefing every morning, so if you have time to turn in or questions please come see us.

Need to see the following ...

Good Job to the Crews

E-6
E-101

O-66
O-128
O-144
O-161

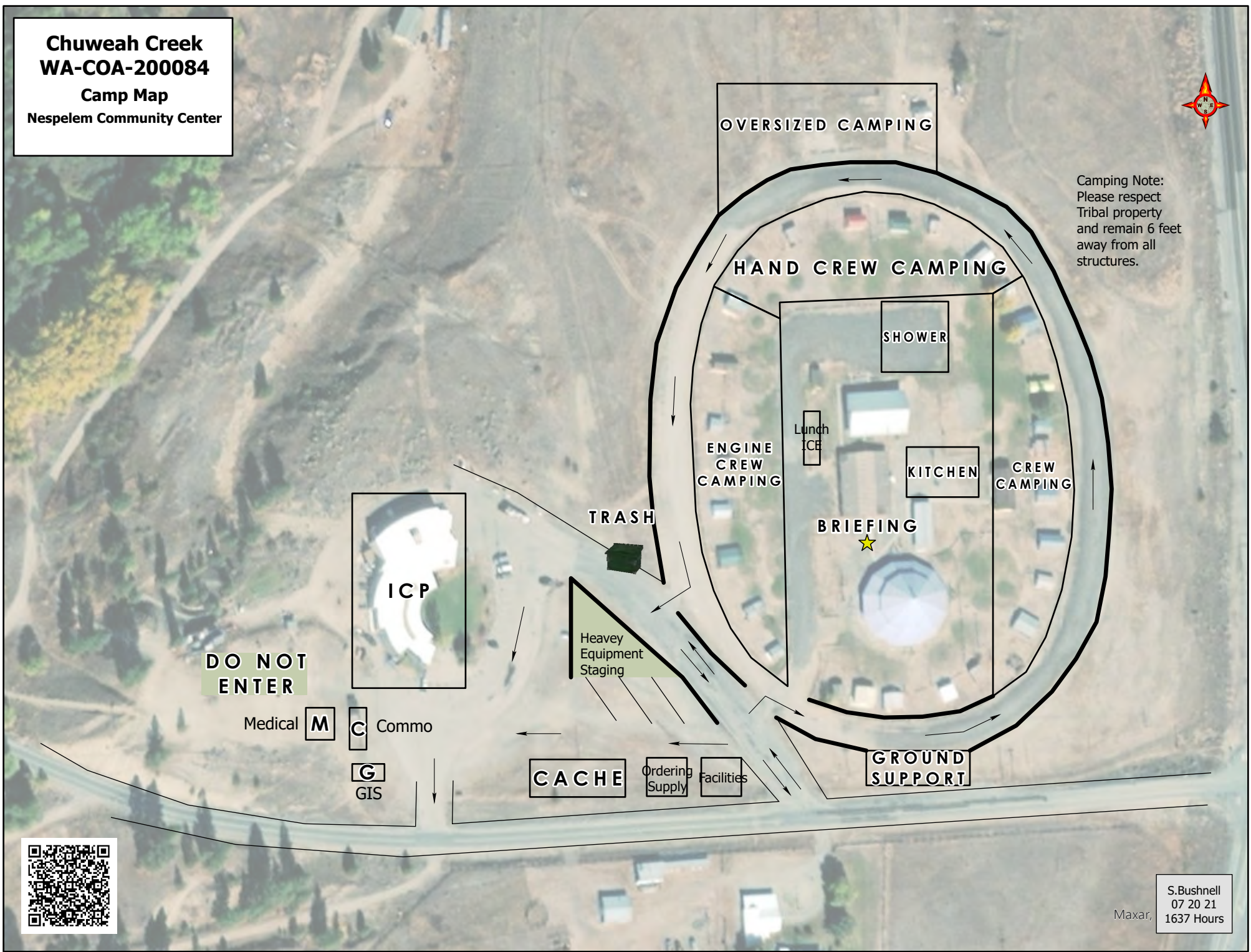
Thank you and remember to be safe

**Chuweah Creek
WA-COA-200084**

**Camp Map
Nespelem Community Center**



Camping Note:
Please respect
Tribal property
and remain 6 feet
away from all
structures.



**DO NOT
ENTER**

Medical **M** **C** Commo
G GIS

CACHE Ordering Supply Facilities

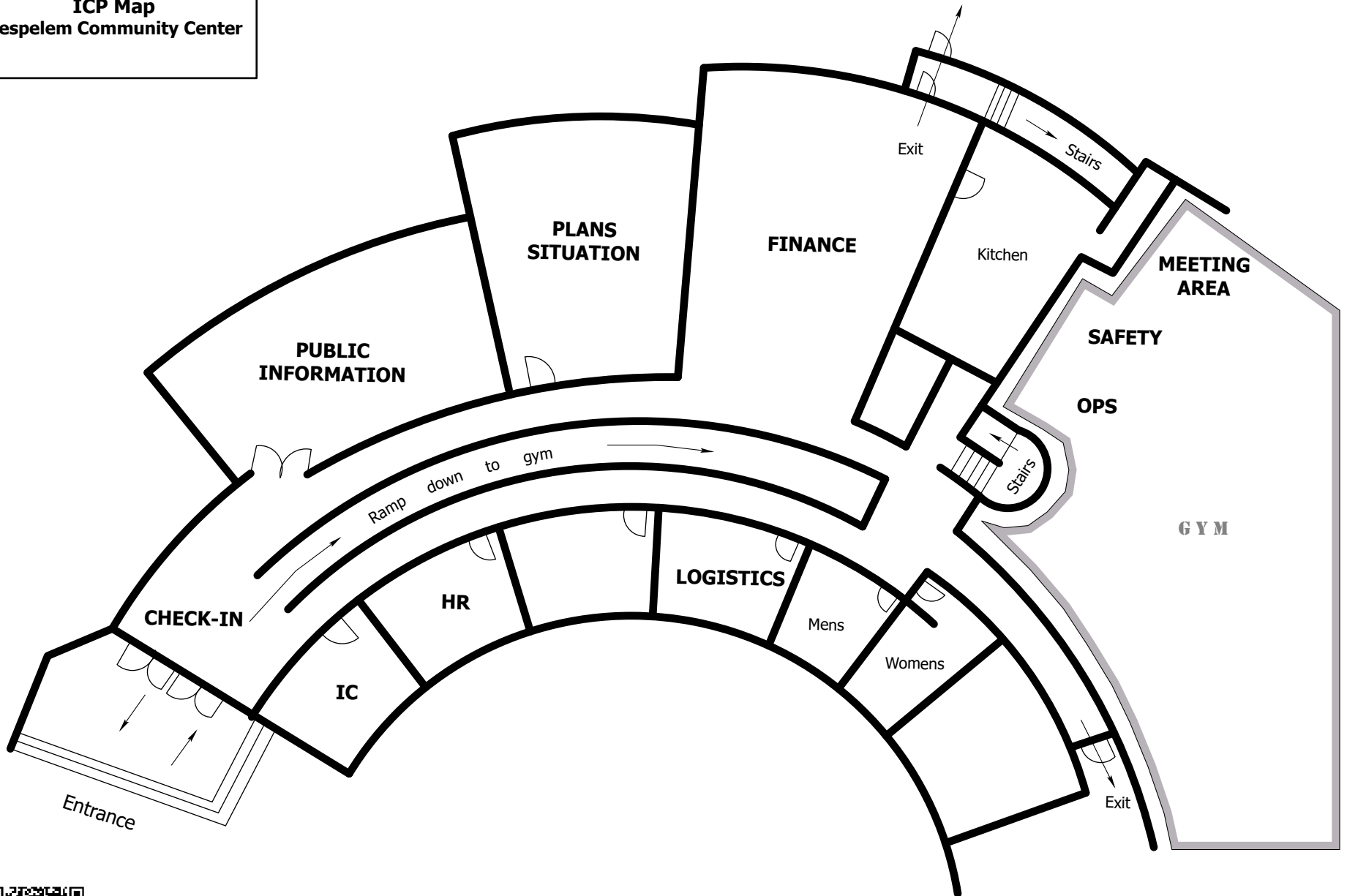
**GROUND
SUPPORT**



S. Bushnell
07 20 21
Maxar, 1637 Hours

**Chuweah Creek
WA-COA-200084**

**ICP Map
Nespelem Community Center**



S.Bushnell
07 20 21
1511 Hours

Incident Maps

For incident maps scan the QR code on the cover of the IAP to open the 'Current Maps' folder.

Note: Sometimes the local area's cellular network is not fast enough for large file downloads. This may result in a browser timeout and error message about the map not being able to download to be displayed. The Community Center has a guest Wi-Fi that can be utilized.

How to Download and Open Maps in Avenza

Method 1: From a browser

1. Tap on the desired map link and wait for the preview.
** If it fails to load, use method 2 instead*
2. Tap the 'send to' icon (square with up arrow)
3. Choose the Avenza app

Method 2: From Avenza direct

1. Tap and hold on the desired map link, then choose 'copy' to copy the direct URL to the map
2. Launch the Avenza app
3. When not in any map... Tap the + (plus) icon at the top of the screen
4. Choose the load from URL option (last choice)
5. Paste the direct URL to the map
6. Tap 'Done' ; the map will begin downloading

How to Send Map Updates to the Situation Unit

Send map updates by email to 2021.chuweahcreek.situation@firenet.gov or text/call the Situation Unit at 360-584-3373. Make sure to include your name, position and explanation of the update you send.

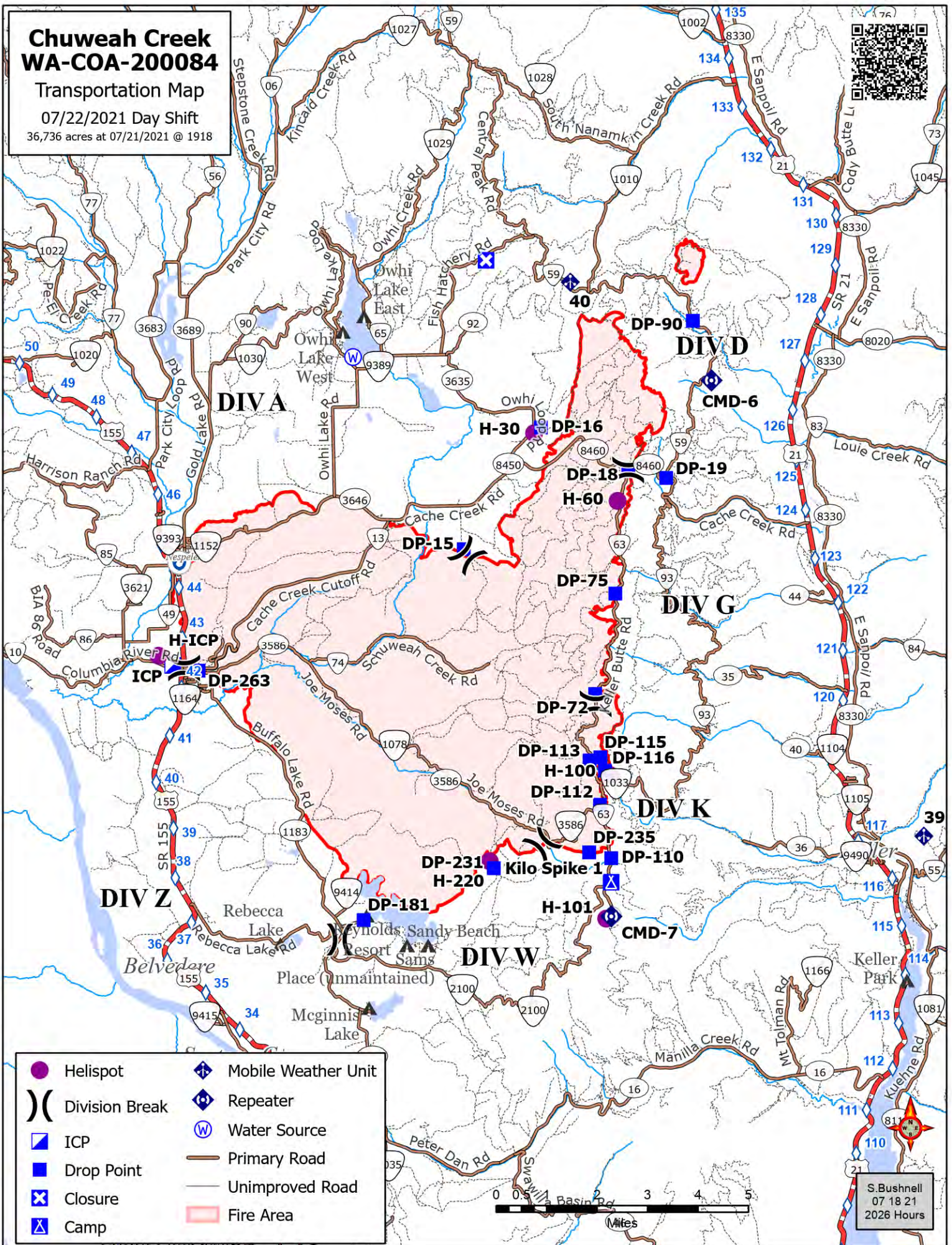
1. Open the map in Avenza.
2. Click the pin with three lines near the lower-right corner.
3. *iPhone:* In the lower right, click the square with up arrow. From the pop-up menu, choose Export to Others.
Android: In the lower right, click the circle with three lines. Click the pop-up circle with up arrow.
4. Set these options:
 - a. Filename – leave alone
 - b. Export Format – choose SHP, GPX or XML
 - c. Data – all features
 - d. Image size – no image
5. Click the Export button in the upper-right corner.
6. When the export is ready, choose your Mail application.
7. Send the email to 2021.chuweahcreek.situation@firenet.gov.
8. Your email needs to include an explanation of the data you are sending.

Chuweah Creek WA-COA-200084

Transportation Map

07/22/2021 Day Shift

36,736 acres at 07/21/2021 @ 1918



- | | | | |
|--|----------------|--|---------------------|
| | Helispot | | Mobile Weather Unit |
| | Division Break | | Repeater |
| | ICP | | Water Source |
| | Drop Point | | Primary Road |
| | Closure | | Unimproved Road |
| | Camp | | Fire Area |



S. Bushnell
07 18 21
2026 Hours

COVID-19 MITIGATIONS FOR CHUWEAH FIRE

- Fully vaccinated individuals are not required to wear masks in camp or at ICP.
- Individuals who have not been vaccinated should continue to wear masks and observe social distancing while gathered with others outside of their module and during ANY indoor activities.
- Conduct daily verbal screening checks within crews, report any COVID-like symptoms to your direct supervisor. Supervisors should report any positive symptoms to the Medical Unit for next steps.
- To the extent possible, observe “Module as One” practices between crews, allowing for safe distance and minimizing close contact with other crews and resources.
- Limit traffic inside of the ICP building to Incident Management Team members and essential visitors as much as possible.
- Observe social distancing standards while waiting in line for food and limit contact with others outside of your crew in the food service line. If possible, send crew representatives to pick up meals.
- Practice good personal hygiene, wash hands frequently and disinfect high-traffic areas on a regular basis.
- Limit close contact between firefighters and the public as much as possible to prevent exposure and spread.

UNIT LOG	1. Incident Name	2. Date Prepared	3. Time Prepared
4. Unit Name/Designators	5. Unit Leader (Name and Position)	6. Operational Period	
7. Personnel Roster Assigned			
Name	ICS Position	Home Base	
8. Activity Log			
Time	Major Events		
9. Prepared by (Name and Position)			

EMERGENCY PLAN

INCIDENT WITHIN AN INCIDENT

ON SCENE SUPERVISOR

In the event of an accident or medical incident of any size, your primary responsibility is to ENSURE that the victim(s) receive prompt and effective Triage, Treatment and Transportation.

- Conduct size-up of the incident (nature of accident, number type of resources involved, latitude and longitude location): notify incident communications center and supervisor, request assistance as needed.
- Order and coordinate medical and support response to the accident.
- Evaluate special needs (law enforcement, haz mat, etc.).
- Clear the command frequency if medical emergency; coordinate with incident communications and air attack for air medical transportation needs
- Preserve and photograph the scene for accident investigation.
- Remain aware of surroundings and the status of the main incident (delegate personnel to monitor the main fire) to ensure safety of medical treatment personnel.
- Until relieved, supervise and manage all personnel involved at the incident scene.
- **ENSURE THE MEDICAL INCIDENT REPORT IN THE INCIDENT ACTION PLAN IS BEING USED AND FOLLOWED.**

MEDICAL PLAN (ICS 206 WF)

20 Incident/Project Name		1. Operational Period						
Chuweah Creek Fire		Date/Time July 22-23, 2021 0600-0600						
2. Ambulance Services								
Name	Complete Address	Phone		Advanced Life Support (ALS)				
		Yes	No					
Colville Tribal EMS Nespelem, WA	410 10 th St. Nespelem, WA 99155	Dispatch 509-978-9323				x		
Lifeline Ambulance	912 Koala Ave Omak, WA 98841	Dispatch 509-663-8091		x				
3. Air Ambulance Services								
Name		Phone		Type of Aircraft & Capability				
Airlift Northwest		800-426-2430 or 911		Rotor in Wenatchee				
Life Flight Network		800-232-0911		2 Rotors, 1 Fixed Wing, Spokane				
4. Hospitals								
Name Complete Address	GPS Datum – WGS 84 Coordinate Standard Degrees Decimal Minutes DD° MM.MMM' N - Lat DD° MM.MMM' W - Long		Travel Time From ICP		Phone	Helipad		Level of Care Facility
			Air	Gnd		Yes	No	
Coulee Medical Center 411 Fortuyn Rd Grand Coulee, WA 99133	Lat:	44°56.5186'N	20 Min	40 Min	509-633-1753	X		Level 4 Trauma
	Long:	119°0.4333'W						
	VHF:							
Confluence Health Hospital (Central Washington Hospital) 1201 S Miller St. Wenatchee, WA 98801	Lat:	47°24.4340'N	1 Hr	2Hr	509-662-1511	X		Level 2 Trauma
	Long:	120°19.3664'W						
	VHF:							
Mid-Valley Hospital 912 Koala Ave Omak, WA 98841	Lat:	48°23.8336'N	40 Min	1 Hr 14min	509-826-1760	X		Level 4 Trauma
	Long:	119°32.8758						
	VHF :							
Harborview Medical 325 9 th Ave Seattle, WA 98104	Lat:	47°36.1897'N	2 Hr	4 Hr	541-222-6929	X		Level 1 Trauma Burn Center
	Long:	122°19.4759'W						
	VHF:							
5. Division Branch Group		Capability		Personnel				
Div D		BLS Ambo 3 Greys Harbor (E113)						
Div G		Unstaffed						
Div A/Z		EMT 2 Brantner (E-19)						
Div K/W		ALS Ambo 1 Lifeline (E-17) Medical UTV (E-134) (Staffed by Ambo 1)						
Night Shift		ALS Ambo 2 Lifeline (E 92) Medic 3 Spendlove (O-93), EMT 1 Landrum (E-18)						
6. Prepared By (Medical Unit Leader)			7. Date/Time		8. Reviewed By (Safety Officer)		9. Date/Time	
Eamonn Ryan, Diana Braun, Lee Venning <i>Eamonn Ryan</i>			7-21-2021 1800		Taija Corso (T) <i>Taija Corso</i>		7-21-2021 1800	

MEDICAL PLAN (ICS 206 WF)

Controlled Unclassified Information//Basic

Medical Incident Report

FOR A NON-EMERGENCY INCIDENT, WORK THROUGH CHAIN OF COMMAND TO REPORT AND TRANSPORT INJURED PERSONNEL AS NECESSARY.

FOR A MEDICAL EMERGENCY: IDENTIFY ON SCENE INCIDENT COMMANDER BY NAME AND POSITION AND ANNOUNCE "MEDICAL EMERGENCY" TO INITIATE RESPONSE FROM IMT COMMUNICATIONS/DISPATCH.

Use the following items to communicate situation to communications/dispatch.

1. CONTACT COMMUNICATIONS / DISPATCH (Verify correct frequency prior to starting report)

Ex: "Communications, Div. Alpha. Stand-by for Emergency Traffic."

2. INCIDENT STATUS: Provide incident summary (including number of patients) and command structure.

Ex: "Communications, I have a Red priority patient, unconscious, struck by a falling tree. Requesting air ambulance to Forest Road 1 at (Lat./Long.) This will be the Trout Meadow Medical, IC is TFLD Jones. EMT Smith is providing medical care."

Severity of Emergency / Transport Priority	<input type="checkbox"/> RED / PRIORITY 1 Life or limb threatening injury or illness. Evacuation need is IMMEDIATE <i>Ex: Unconscious, difficulty breathing, bleeding severely, 2° – 3° burns more than 4 palm sizes, heat stroke, disoriented.</i> <input type="checkbox"/> YELLOW / PRIORITY 2 Serious Injury or illness. Evacuation may be DELAYED if necessary. <i>Ex: Significant trauma, unable to walk, 2° – 3° burns not more than 1-3 palm sizes.</i> <input type="checkbox"/> GREEN / PRIORITY 3 Minor Injury or illness. Non-Emergency transport <i>Ex: Sprains, strains, minor heat-related illness.</i>	
Nature of Injury or Illness & Mechanism of Injury		<i>Brief Summary of Injury or Illness (Ex: Unconscious, Struck by Falling Tree)</i>
Transport Request		<i>Air Ambulance / Short Haul/Hoist Ground Ambulance / Other</i>
Patient Location		<i>Descriptive Location & Lat. / Long. (WGS84)</i>
Incident Name		<i>Geographic Name + "Medical" (Ex: Trout Meadow Medical)</i>
On-Scene Incident Commander		<i>Name of on-scene IC of Incident within an Incident (Ex: TFLD Jones)</i>
Patient Care		<i>Name of Care Provider (Ex: EMT Smith)</i>

3. INITIAL PATIENT ASSESSMENT: Complete this section for each patient as applicable (start with the most severe patient)

Patient Assessment: See IRPG page 106

Treatment:

4. TRANSPORT PLAN:

Evacuation Location (if different): (Descriptive Location (drop point, intersection, etc.) or Lat. / Long.) Patient's ETA to Evacuation Location:

Helispot / Extraction Site Size and Hazards:

5. ADDITIONAL RESOURCES / EQUIPMENT NEEDS:

Example: Paramedic/EMT, Crews, Immobilization Devices, AED, Oxygen, Trauma Bag, IV/Fluid(s), Splints, Rope rescue, Wheeled litter, HAZMAT, Extrication

6. COMMUNICATIONS: Identify State Air/Ground EMS Frequencies and Hospital Contacts as applicable

Function	Channel Name/Number	Receive (RX)	Tone/NAC *	Transmit (TX)	Tone/NAC *
COMMAND					
AIR-TO-GRND					
TACTICAL					

7. CONTINGENCY: Considerations: If primary options fail, what actions can be implemented in conjunction with primary evacuation method? Be thinking ahead.

8. ADDITIONAL INFORMATION: Updates/Changes, etc.

REMEMBER: Confirm ETA's of resources ordered. Act according to your level of training. Be Alert. Keep Calm. Think Clearly. Act Decisively.

Controlled Unclassified Information//Basic