

Incident Action Plan CHUWEAH CREEK FIRE

WA-COA-200084

N5RG [P] (1522)
221 KPA

July 23-24, 2021

0600-1800 Day Operational Period
1800-0600 Night Operational Period

MORNING AND EVENING BRIEFING
AT 0600 AND 1800 DAILY

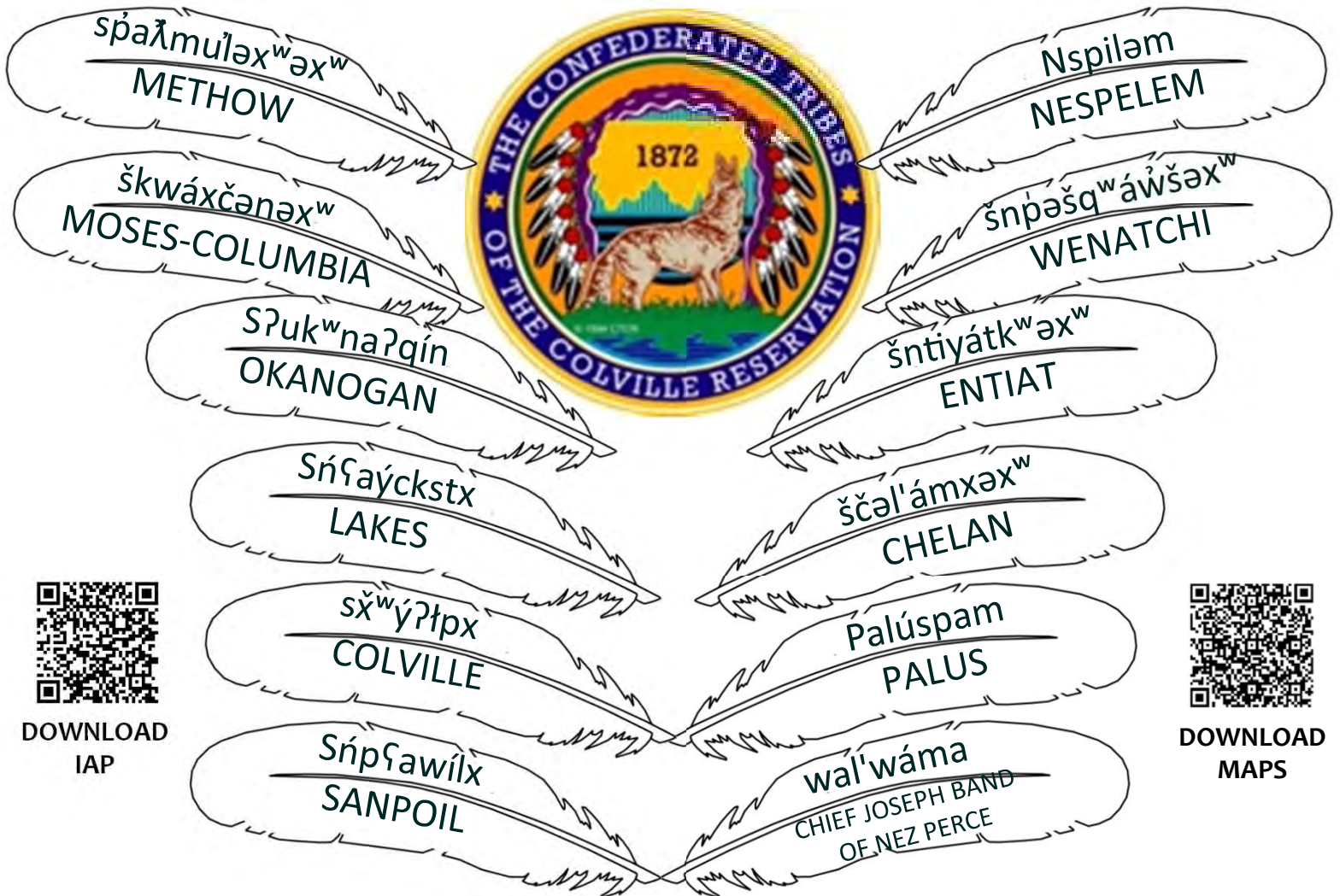
Phone: 1-669-254-5252

Meeting ID: 160 329 1397

Passcode: 252064



ZOOM
BRIEFING



DOWNLOAD
IAP



DOWNLOAD
MAPS


This page intentionally left blank.



INCIDENT OBJECTIVES (ICS 202)

| | | |
|--|---|---|
| 1. Incident Name: | 2. Operational Period: DAY/NIGHT | |
| CHUWEAH CREEK FIRE | Date/Time From: 07/23/2021 0600 FRI | Date/Time To: 07/24/2021 0600 SAT |
| 3. Objective(s): | | |
| <p>Implement risk management practices for the safety of firefighters, other responders and the public as the first priority.</p> <p>Minimize impacts to private property, critical infrastructure, timber, cultural and natural resources including water, fish, wildlife, and range land.</p> <p>Maintain and strengthen community relationships and provide timely fire information to the public and cooperators.</p> <p>Establish and maintain all current COVID-19 mitigation protocols according to CDC guidelines.</p> | | |
| 4. Operational Period Command Emphasis: | | |
| Implement direct suppression tactics where safe to do so to minimize fire size, protect timber values and private property. | | |
| General Situational Awareness: | | |
| Monitor the weather conditions and base all actions on current and expected fire behavior. | | |
| 5. Site Safety Plan Required? Yes <input type="checkbox"/> No <input checked="" type="checkbox"/> | | |
| Approved Site Safety Plan(s) Located | | |
| 6. Incident Action Plan (the items checked below are included in this Incident Action Plan): | | |
| <input checked="" type="checkbox"/> ICS 202 <input checked="" type="checkbox"/> ICS 203 <input checked="" type="checkbox"/> ICS 204 <input checked="" type="checkbox"/> ICS 205 <input type="checkbox"/> ICS 205A <input checked="" type="checkbox"/> ICS 206 | <input type="checkbox"/> ICS 207 <input type="checkbox"/> ICS 208 <input checked="" type="checkbox"/> ICS 220 <input checked="" type="checkbox"/> Map/Chart <input checked="" type="checkbox"/> Weather Forecast/Tides/Currents | Other Attachments: <input checked="" type="checkbox"/> HR MESSAGE <input type="checkbox"/> _____ <input type="checkbox"/> _____ <input type="checkbox"/> _____ |
| 7. Prepared by: HOWARD JOHNSON Position/Title: PSC2 | Signature: <i>Howard Johnson</i> | |
| 8. Approved by Incident Commander: | Name: BOBBY SHINDELAR | Signature: <i>Bobby Shindelar</i> |
| ICS 202 | IAP Page | Date/Time: 07/22/2021 2000 |

ORGANIZATION ASSIGNMENT LIST (ICS 203)

| | | | |
|--|--|---|---|
| 1. Incident Name: | | 2. Operational Period: DAY/NIGHT | |
| CHUWEAH CREEK FIRE | | Date/Time From: 07/23/2021 0600 | FRI |
| | | Date/Time To: 07/24/2021 0600 | SAT |
| 3. Incident Commander(s) and Command Staff: | | MEDICAL UNIT | EAMMON RYAN; DIANA BRAUN LEE VENNING (T) |
| IC/UC | BOB SHINDELAR | FOOD UNIT | RUSS HOVEY ALEXANDER LILLA |
| SAFETY OFFICER | KEITH WAKEFIELD; JACK CATES TAIJA CORSO (T) | SECURITY UNIT | |
| INFORMATION OFFICER | MARY BEAN; ROLAND EMETAZ KATHY MOSES | | |
| LIAISON OFFICER | SCOTT CRAWFORD | | |
| HUMAN RESOURCE SPECIALIST | SUSIE MANEZES | | |
| HEALTH LIAISON | LIV STECKER | 7. Operations Section: | |
| | | OPS SECTION CHIEF | AARON ROWE |
| | | PLANNING OPS | KURT RANTA (T) |
| 4. Agency/Organization Representative(s): | | | |
| Agency/Organization | Name | | |
| DNR AREP | PAT RYAN | DIVISION/GROUP | A/Z |
| BIA COLVILLE AGENCY AREP | JOSEPH HOLFORD | DIVISION/GROUP | D |
| | | DIVISION/GROUP | G |
| | | DIVISION/GROUP | K/W |
| | | DIVISION/GROUP | NIGHT |
| | | | RICK WOODALL |
| | | | MATT KENNEDY |
| | | | LARRY LEACH |
| | | | BOB HINDS |
| | | | MICHAEL JACKSON |
| 5. Planning Section: | | 7b. Air Operations Branch: | |
| CHIEF | HOWARD JOHNSON | AIR OPS BRANCH DIRECTOR | MIKE DAVIS (VIRTUAL) |
| DEPUTY | ERIC BLACK | AIR SUPPORT SUPERVISOR | TIM LYDA |
| RESOURCES UNIT | JILL JOHNSON | AIR ATTACK SUPERVISOR | MATT WOOSLEY |
| SITUATION UNIT | DAVE WISCHER | HELICOPTER COORDINATOR | |
| DEMOBILIZATION UNIT | MIKE HESTON | AIR TANKER COORDINATOR | |
| GIS SPECIALIST | SHAWN BUSHNELL | | |
| TECHNOLOGY SUPPORT SPECIALIST | GEORGE JENKINS | 8. Finance/Administration Section: | |
| INCIDENT METEOROLOGIST | BOB TOBIN | CHIEF | CHERI FULLER CHRISTINA GOEBEL (T) |
| FIRE BEHAVIOR ANALYST | DON STRAND | TIME UNIT | CAROL LONG |
| | | PROCUREMENT UNIT | MARK BOHNET |
| | | COST UNIT | KATHLEEN HIGH |
| | | ICPI | ROB HECHINGER |
| 6. Logistics Section: | | | |
| CHIEF | DAN SOPTICH | | |
| DEPUTY | KEVIN HAUGHTON | | |
| SUPPLY UNIT | JOHN KAUPA | | |
| FACILITIES UNIT | MIKE RENDON | | |
| GROUND SUPPORT UNIT | DAVE HARSH | | |
| COMMUNICATIONS UNIT | MISSY PARKER | | |
| 9. Prepared By: | Name: JILL JOHNSON | Position/Title: RESL | Signature:  |
| ICS 203 | IAP Page | Date/Time: 07/22/2021 2000 | |

Fire Weather Forecast

FORECAST NO: 10
PREDICTION FOR: Friday
Shift Date: July 23-24, 2021 0600-0600
TIME AND DATE
FORECAST ISSUED: 7/22/2021 at 2000

INCIDENT: Chuweah Creek Fire
UNIT: Colville Reservation
SIGNED: Bob Tobin
Incident Meteorologist (IMET)

Weather Discussion: Weak high pressure will begin to build into the region on Friday and strengthen through the weekend. This will result in another warming and drying trend. Temperatures will once again warm well above normal and relative humidity will stay very dry. A couple of weak waves will move through the ridge. One on Monday may increase winds and high clouds. The second Tuesday into Wednesday is a little stronger and should bring cooler temperatures but also gusty winds.

WEATHER FORECAST:

Today:
SKY/WEATHER: Sunny and warmer
High Temperature...77-83 above 2500 feet...83-88 below 2500 feet.
24hr Change...Up 3-5 degrees.
Min RH.....15-20% above 2500 feet...12-17% below 2500 feet
24hr Change...Little change.
20-FOOT WINDS: Southwest-west 10-12 mph with gusts around 20 mph.
CWR (>=0.10")...0% **LAL....**1 **Haines Index...**3 (Very Low) **Mixing Height...**7200 ft AGL

Tonight:
Weather: Clear. Areas of smoke.
Low Temperature...55-60.
Max RH.....35-45%
20-FOOT WINDS: Becoming northwest-north 4-7 mph after 2200.
CWR (>=0.10")...0% **LAL...**1.

Saturday:
SKY/WEATHER: Sunny.
High Temperature...81-86 above 2500 feet...85-90 below 2500 feet.
Min RH.....15-20% above 2500 feet...12-17% below 2500 feet
20-FOOT WINDS: West winds 10-12 mph with gusts to 20 mph.
CWR (>=0.10")...0% **LAL....**1 **Haines Index...**4 (Low) **Mixing Height...**8200 ft AGL

Extended Outlook
Sunday...Sunny. Low: 60-65...High: 85-95. Min RH: 12-18% Winds: Southwest 8-10 mph with gusts to 20 mph.
Monday...Sunny. Low: 56-60...High: 87-97. Min RH: 10-20% Winds: southwest 8-10 mph with gusts to 20 mph.

FIRE BEHAVIOR FORECAST

| | |
|----------------------------|--|
| FORECAST NUMBER: 10 | TYPE OF FIRE: Wildland |
| FIRE NAME: Chuweah Creek | OPERATIONAL PERIOD: July 23-24, 2021 0600-0600 |
| DATE ISSUED: July 22, 2021 | TIME ISSUED: 1800 |
| UNIT: WA-COA | Don Strand FBAN |

INPUTS

WEATHER SUMMARY: Sunny. Max Temps near 88 with min RH near 12%. Winds southwest- west 10-12 mph gusts to 20 mph.

OUTPUTS

FIRE BEHAVIOR

GENERAL:

- Note: Smoke haze over the fire area may reduce fire behavior potential some due to shading and slightly increasing stability. In the event it clear, expect an increase to forecasted fire behavior activity.
- Fuels: Dead fuels moistures continue to be very dry. Live fuels are drying and becoming more available to burn.
- Fire behavior potential remains very high. Potential exists for active fire behavior in the afternoon/evening where wind/topography align and have available fuels. Thermal belt developing overnight so anything burning will continue burning in the thermal belt. ERC's will continue to be near the 97th percentile. Fuels are mixed grass, brush, conifer with grass and brush understory with areas of light logging slash.
- Probability of Ignition will approach 80% today unshaded. Maximum spotting distance approaching 0.2 mile. Expect continued backing, flanking fire spread with occasional torching where fuels are available. Flare up potential exists in areas of dirty burns where live fuels close to surface have been heat treated previously, torching likely

Specific:

DIV: D. Expect fire to back and flank with occasional torching in available fuels inside control lines. Potential exists for spots outside fire lines with fire growth. Watch for hold over spot fires.

Incident 90 Fire: Fire is continuing to clean up surface debris and consume unburned interior fuels. Expect squirrely winds at times to contribute possible flare ups and spotting.

DIV: G: Expect backing and flanking fire behavior. Potential for isolated torching in areas with dirty burns. On steeper slopes, watch for roll outs carrying burning material down slope below your location. Pay attention to smoke drift when burning out.

DIV: KW. Expect areas unburned areas west of Keller Butte Road to continue to clean up with surface fire spread and occasional torching. Continue to watch for spot fires. On steeper slopes, watch for roll outs.

INITAIL ATTACK: In the event resources are assisting with local IA, update your SA to your new work area. Remember, the light flashy fuels can quickly change directions of spread and rapidly accelerate. Rates of spread in grass and brush can be much faster than firefighters can move.

AIR OPERATIONS: Watch for turbulence in the complex terrain.

SAFETY

Stump holes burning deep.

Areas of dirty burns with heat treated brush have potential for reburn.

Dozer and road berms have potential to hold heat.

Situational Awareness – Remember to readjust your SA as conditions change through the day.



18.TAKING A NAP NEAR THE FIRELINE

Safety Message

July 23-24, 2021

INCIDENT: Chuweah Creek

OPERATIONAL PERIOD: 0600-0600

TOPICS:

ASH PITS/STUMP HOLES

Ash pits and stump holds are an inherent and hidden risk to wildland firefighters that can cause severe burns and injuries. Ash pits are created when a ground fire consumes underground fuels creating an empty space that is imperceptible from the surface.

Environmental factors that increase the risk of ash pit formation after a wildfire:

- * Extensive root systems of trees and shrubs.
- * Deep duff or peat, which is the organic layer covering mineral soil.
- * Landscapes that have once been cultivated or manipulated by heavy equipment, old dozer piles, sawmills, timber sale yards, or decking areas.
- * Animal dwellings that have become filled with decadent combustible debris.

Indicators:

- * White ash is sometimes an indicator of ash pits, as are swarms of hovering insects.
- * With the sun behind the suspected ash pit, look for small nearly translucent smokes that dissipate quickly above the ground.
- * Ash pits often give off the smell of incomplete combustion or of creosote burning.

Mitigation measures to consider:

- * Identification of high-risk landscape.
- * Identify and flag all hazardous discovered ash pits.

BEAR SAFETY



"OK, one more time and then it's off to bed for the both of you. ... 'Hey, Bob. Think there are any bears in this old cave?' ... 'I dunno, Jim. Let's take a look.'"

Numerous bears have been spotted within the fire area! Keep an eye out for them and avoid tossing out excess lunch food when out on the line. Don't give them a reason to linger.

SAFETY OFFICER: Jack Cates, Keith Wakefield, Taija Corso (T)

Deliberate Risk Assessment-Hazard Summary

July 23-24, 2021 0600-0600

| Hazard | Mitigation | Post Risk |
|---|---|-----------|
| Viral Transmission Mitigations, Communicable Disease | Maintain awareness of health, perform self-checks, maintain social distancing, and wear face coverings in accordance with CDC recommendations. Report and isolate if not feeling well. | Low |
| Extraction Time | Identify medivac sites and helispots. Initiate ground transport to accident site. Identify EMT/EMTP from resources assigned to division. Provide line qualified paramedics to each division as available. Review IWI protocol to ensure familiarity. Utilize civilian medivac as treatment/timing dictates. Evaluate on-going need for repositioning medical personnel. | High |
| Steep Terrain/Gravity | Do not work crews above or below each other. Post lookouts for rolling material. Watch footing in loose soil, rock and around vegetation. Do not work below heavy equipment. Scout and identify travel routes. Establish LCES. | Moderate |
| Hazard Trees | Use avoidance to limit exposure time. Snag ahead to avoid exposure. Use qualified fallers, blasting, or alternate methods if needed. Conduct on-going risk analysis of all work areas. Follow Hazard Tree Safety Guidelines (IRPG page 22). | High |
| Communication | Evaluate for dead zones prior to engagement. Utilize human repeaters as needed. Ensure accountability of resources in problem areas. | Low |
| Physical Factors | Maintain hydration schedule. Closely monitor work rate and implement rest periods. Maintain nutrition. Ensure adequate work/rest. | Moderate |
| Environmental Factors | Assign medical personnel to camp. Assess for known allergies and report to medical personnel. Obtain Bee Bopper/wasp spray and yellow jacket traps. Maintain an awareness of livestock. Keep an eye out for wildlife including bears, cougars, and rattlesnakes. | Moderate |
| Fire Behavior | Be aware of burn windows and weather impacts and min/max RH for flashy fuels/local conditions. Be aware of increased fire behavior and concerns specific to thunderstorm safety (IRPG p. 21). Report changes to FBAN and IMET. Include thunderstorm safety message in IAP. | Moderate |
| Unburned Fuels/Firing Ops | Establish LCES. Ensure management action points are implemented and followed. Weather updates as needed during burning operations. Locate indirect firelines to minimize the amount of unburned fuels. Follow Interagency Ignition Guide. Ensure communications between all firing operations. Establish road security at all firing sites. Follow approved firing plan for unburned fuels. | Moderate |
| Transportation | Signing of all incident roads that provide access to divisions. Daily updated travel plan maps. Practice defensive driving. In local communities obey the posted speed limits. Use reader boards to control entry as needed. Identify and evaluate contingency and alternate escape and travel routes. | Moderate |
| Aircraft | Utilize Air Attack. Ensure all resources are a safe distance from all bucket and retardant drops. Establish LCES. Utilize air to ground primary radio channel. Reference IRPG (Safe aircraft operations pg. 56-58). Ensure IA resources have coordination with unassigned local air resources to provide deconfliction. | High |
| Heavy Equipment | Post lookouts around equipment work areas. Establish communications with equipment boss and operator. Do not work down slope from equipment. | High |
| Public Interaction | Place new road closures as necessary and maintain current closures. Maintain awareness of evacuation areas and provide accurate information dissemination. | Low |
| Initial Attack | Ensure identified IA resources are briefed of expectations and ensure communication plan is provided. Ensure resources are briefed on IA command structure. Provide identified crews with area maps. | Moderate |
| Uncoordinated Resources/Efforts, Communication with adjacent incident | Coordinate Aviation and Operations efforts with adjacent incidents. Schedule daily check-ins. Share maps, IAPS, and 209's. Coordinate Initial Attack response. Share 205 and use back up tac and command channels. | Low |
| Mop Up and Repair | Identification of high-risk landscape. Identify and flag all hazardous discovered ash pits. Ensure resources are briefed on identification and indicators via the morning briefing and IAP safety message. | Low |

Division/Group Assignment List (ICS 204 WF)
Controlled Unclassified Information//Basic

| | | | | | | |
|--|---------|--------------------------------------|---|----------------------------------|-----------------------|--|
| 1. Incident Name: | | | 3. | | | |
| CHUWEAH CREEK FIRE | | | Branch: | | Division/Group | |
| 2. Operational Period: DAY/NIGHT | | | | | A/Z | |
| Date/Time From: 07/23/2021 0600 FRI | | Date/Time To: 07/24/2021 0600 SAT | | | | |
| 4. Operations Personnel | | | | | | |
| OPERATIONS CHIEF | | AARON ROWE KURT RANTA (T) | | DIVISION/GROUP SUPERVISOR | | RICK WOODALL |
| AIR SUPPORT SUPERVISOR | | TIM LYDA | | SAFETY OFFICER | | KEITH WAKEFIELD JACK CATES; TAIJA CORSO (T) |
| 5. Resources Assigned this Period | | | | | | |
| Strike Team / Task Force / Resource Designator | | LWD | Leader | Number Persons | Drop Off PT./Time | Pick Up PT./Time |
| E-11 ENG6 SILVER TIP FORESTRY 21 | | 07/26 | CASEY LOUIE | 3 | ICP/0600 | ICP/1800 |
| E-104 ENG6 LATE SUMMERS WF 03 | | 07/30 | ETHAN MELVILLE | 3 | ICP/0600 | ICP/1800 |
| | | | | | | |
| | | | | | | |
| | | | | | | |
| | | | | | | |
| | | | | | | |
| | | | | | | |
| 6. Control Operations/Work Assignments: | | | | | | |
| <p>TASK - Patrol structures and fire perimeter. PURPOSE - Protect property and resources. END STATE - Fire is contained within the current perimeter and the threat to structures is eliminated.</p> | | | | | | |
| 7. Special Instructions: | | | | | | |
| Utilize direct line tactics where possible. Burn out indirect line as needed. | | | | | | |
| 8. Division/Group Communication Summary | | | | | | |
| Function | Channel | RX Frequency N/W | RX Tone/NAC | TX Frequency N/W | TX Tone/NAC | Mode |
| COMMAND | 6 | 159.4275 | 192.8 | 151.2725 | 192.8 | A |
| COMMAND | 7 | 170.4500 | 123.0 | 168.1000 | 123.0 | A |
| TACTICAL | 1 | 168.0500 | 123.0 | 168.0500 | 123.0 | A |
| AIR TO GROUND | 14 | 171.6750 | | 171.6750 | | A |
| 9. Prepared By (Resource Unit Leader) | | | Approved By (Planning Section Chief) | | Date | Time |
| JILL JOHNSON | | | HOWARD JOHNSON | | 07/22/2021 | 2000 |

Division/Group Assignment List (ICS 204 WF)
Controlled Unclassified Information//Basic

| | | | | | | |
|---|---------|--------------------------------------|---|----------------------------------|-----------------------|--|
| 1. Incident Name: | | | 3. | | | |
| CHUWEAH CREEK FIRE | | | Branch: | | Division/Group | |
| 2. Operational Period: DAY/NIGHT | | | | | D | |
| Date/Time From: 07/23/2021 0600 FRI | | Date/Time To: 07/24/2021 0600 SAT | | | | |
| 4. Operations Personnel | | | | | | |
| OPERATIONS CHIEF | | AARON ROWE KURT RANTA (T) | | DIVISION/GROUP SUPERVISOR | | MATT KENNEDY |
| AIR SUPPORT SUPERVISOR | | TIM LYDA | | SAFETY OFFICER | | KEITH WAKEFIELD JACK CATES; TAIJA CORSO (T) |
| 5. Resources Assigned this Period | | | | | | |
| Strike Team / Task Force / Resource Designator | | LWD | Leader | Number Persons | Drop Off PT./Time | Pick Up PT./Time |
| O-1.67 SOF2 | | 07/27 | JOSH NORTHRUP | 1 | ICP/0600 | ICP/1800 |
| O-46 SOFR | | 07/29 | DAN GARNER | 1 | ICP/0600 | ICP/1800 |
| O-31 TFLD (T) | | 07/29 | CHARLES DAVIS | 1 | ICP/0600 | ICP/1800 |
| O-124 TFLD | | 07/30 | GREGORY ANDERSON | 1 | ICP/0600 | ICP/1800 |
| O-9 HEQB | | 07/29 | JEREMY HUNT | 1 | ICP/0600 | ICP/1800 |
| O-94 HEQB | | 07/28 | NICHOLAS HARPER | 1 | ICP/0600 | ICP/1800 |
| O-95 HEQB (T) | | 07/29 | ASA RAY | 1 | ICP/0600 | ICP/1800 |
| O-155 FMOD ATHERLY CONTRACTING | | 08/01 | CODY HENDERSON | 2 | ICP/0600 | ICP/1800 |
| O-156 FMOD SWEDBERG CONTRACTING | | 08/02 | RICHARD SMALLEY | 2 | ICP/0600 | ICP/1800 |
| C-6 HC2 PACIFIC OASIS #1 | | 07/29 | JAMES SPRIGGS | 20 | ICP/0600 | ICP/1800 |
| C-7 HC2 SUNSET FORESTRY 1 | | 07/29 | ADAN MEJIA | 20 | ICP/0600 | ICP/1800 |
| C-12 HC1 SILVER CITY IHC | | 07/31 | JUSTIN ROMERO | 21 | ICP/0600 | ICP/1800 |
| C-13 HC2I MT. TAYLOR | | 07/31 | ERIC MCKENNA | 18 | ICP/0600 | ICP/1800 |
| E-9 ENG6 SILVER TIP FORESTRY 21 | | 07/26 | JEREMY TAYLOR | 3 | ICP/0600 | ICP/1800 |
| E-16 ENG6 THE GENERAL BR 102 | | 08/03 | FRANK BRAUN | 2 | ICP/0600 | ICP/1800 |
| E-97 ENG5 UTTING CONSTRUCTION 04 | | 07/30 | TYLER NELSON | 3 | ICP/0600 | ICP/1800 |
| E-99 ENG4 TORRES CONTRACTING 9 | | 07/30 | JOHN MARTINEZ | 3 | ICP/0600 | ICP/1800 |
| E-100 ENG4 COOPER CONTRACTING 14 | | 07/30 | CODY BURWELL | 3 | ICP/0600 | ICP/1800 |
| E-109 ENG6 BAILEY ENTERPRISES | | 07/29 | MIKE OJANEN | 3 | ICP/0600 | ICP/1800 |
| E-110 ENG6 PACIFIC NW WILDFIRE 1 | | 07/29 | WILLIAM WELSH | 3 | ICP/0600 | ICP/1800 |
| 8. Division/Group Communication Summary | | | | | | |
| Function | Channel | RX Frequency N/W | RX Tone/NAC | TX Frequency N/W | TX Tone/NAC | Mode |
| COMMAND | 6 | 159.4275 | 192.8 | 151.2725 | 192.8 | A |
| TACTICAL | 2 | 168.2000 | 123.0 | 168.2000 | 123.0 | A |
| AIR TO GROUND | 14 | 171.6750 | | 171.6750 | | A |
| 9. Prepared By (Resource Unit Leader) | | | Approved By (Planning Section Chief) | | Date | Time |
| JILL JOHNSON | | | HOWARD JOHNSON | | 07/22/2021 | 2000 |

Division/Group Assignment List (ICS 204 WF)
Controlled Unclassified Information//Basic

| | | | | | | |
|---|---------|--------------------------------------|---|----------------------------------|---------------------------------------|--|
| 1. Incident Name: | | | | 3. | | |
| CHUWEAH CREEK FIRE | | | | Branch: | Division/Group D | |
| 2. Operational Period: DAY/NIGHT | | | | | | |
| Date/Time From: 07/23/2021 0600 FRI | | Date/Time To: 07/24/2021 0600 SAT | | | | |
| 4. Operations Personnel | | | | | | |
| OPERATIONS CHIEF | | AARON ROWE KURT RANTA (T) | | DIVISION/GROUP SUPERVISOR | | MATT KENNEDY |
| AIR SUPPORT SUPERVISOR | | TIM LYDA | | SAFETY OFFICER | | KEITH WAKEFIELD JACK CATES; TAIJA CORSO (T) |
| 5. Resources Assigned this Period | | | | | | |
| Strike Team / Task Force / Resource Designator | | LWD | Leader | Number Persons | Drop Off PT./Time | Pick Up PT./Time |
| E-125 ENG6 LAVA RIVER FORESTRY | | 08/02 | RAUL HERRA | 3 | ICP/0600 | ICP/1800 |
| E-87 SKG3 TUNK CREEK 4 | | 07/28 | JACK OBRYAN | 2 | ICP/0600 | ICP/1800 |
| E-1 WT2 INNES WOOD PRODUCTS | | 07/27 | SCOTT DAWSON | 1 | ICP/0600 | ICP/1800 |
| E-82 WT2 ASPEN MTN RESOURCES 10 | | 07/29 | TYLER OWEN | 1 | ICP/0600 | ICP/1800 |
| E-83 WT2 ASPEN MTN RESOURCES 14 | | 07/29 | WARREN HANSEN | 1 | ICP/0600 | ICP/1800 |
| E-23 DOZ3 TIGER TRUCKING | | 07/27 | CODY HASTING | 2 | ICP/0600 | ICP/1800 |
| E-80 DOZ2 IRON TRIANGLE | | 07/28 | JOSH MOULTON | 2 | ICP/0600 | ICP/1800 |
| E-123 DOZ3 MCCLURE EQUIPMENT | | 07/26 | GARY MCCLURE | 3 | ICP/0600 | ICP/1800 |
| E-56 UTV TOP GUN | | | -NONE- | | ICP/0600 | ICP/1800 |
| E-129 UTV TOP GUN | | | -NONE- | | ICP/0600 | ICP/1800 |
| E-130 UTV TOP GUN | | | -NONE- | | ICP/0600 | ICP/1800 |
| E-113 BLS AMBU3 GRAYS HARBOR | | 07/29 | CARLTON RHOADES | 2 | ICP/0600 | ICP/1800 |
| E-19 EMTF 2 | | 07/27 | TOM BRANTNER | 1 | ICP/0600 | ICP/1800 |
| 6. Control Operations/Work Assignments: | | | | | | |
| <p>TASK - Anchor and flank the fire perimeter from A/D division break, south to the D/G division break. Secure Incident 90. PURPOSE - Protect property and resources north of fire perimeter. END STATE - Fire is contained north of Cache Creek Rd. Incident 90 lined and secured. Structures secured south of Cache Creek Rd.</p> | | | | | | |
| 7. Special Instructions: | | | | | | |
| Utilize direct line tactics where possible. Burn out indirect line as needed. | | | | | | |
| 8. Division/Group Communication Summary | | | | | | |
| Function | Channel | RX Frequency N/W | RX Tone/NAC | TX Frequency N/W | TX Tone/NAC | Mode |
| COMMAND | 6 | 159.4275 | 192.8 | 151.2725 | 192.8 | A |
| TACTICAL | 2 | 168.2000 | 123.0 | 168.2000 | 123.0 | A |
| AIR TO GROUND | 14 | 171.6750 | | 171.6750 | | A |
| 9. Prepared By (Resource Unit Leader) | | | Approved By (Planning Section Chief) | | Date | Time |
| JILL JOHNSON | | | HOWARD JOHNSON | | 07/22/2021 | 2000 |

Division/Group Assignment List (ICS 204 WF)
Controlled Unclassified Information//Basic

| | | | | | | |
|---|---------|--------------------------------------|---|----------------------------------|-----------------------|---|
| 1. Incident Name: | | | 3. | | | |
| CHUWEAH CREEK FIRE | | | Branch: | | Division/Group | |
| 2. Operational Period: DAY/NIGHT | | | | | G | |
| Date/Time From: 07/23/2021 0600 FRI | | Date/Time To: 07/24/2021 0600 SAT | | | | |
| 4. Operations Personnel | | | | | | |
| OPERATIONS CHIEF | | AARON ROWE KURT RANTA (T) | | DIVISION/GROUP SUPERVISOR | | LARRY LEACH |
| AIR SUPPORT SUPERVISOR | | TIM LYDA | | SAFETY OFFICER | | KEITH WAKEFIELD; JACK CATES; TAIJA CORSO (T) |
| 5. Resources Assigned this Period | | | | | | |
| Strike Team / Task Force / Resource Designator | | LWD | Leader | Number Persons | Drop Off PT./Time | Pick Up PT./Time |
| O-1.55 SOF2 (T) | | 07/27 | DON WALLER | 1 | ICP/0600 | ICP/1800 |
| O-46 SOFR | | 07/29 | DAN GARNER | 1 | ICP/0600 | ICP/1800 |
| C-19 HC2 FIRST STRIKE ENVIRON | | 08/05 | JEREMY SLIFER | 19 | ICP/0600 | ICP/1800 |
| C-22 HC2I AHTANUM | | 07/24 | ROBERT HARINGA | 20 | ICP/0900 | ICP/0100 |
| E-96 ENG6 FIRST STRIKE ENV CO | | 07/31 | GERALD COATS | 3 | ICP/0600 | ICP/1800 |
| E-101 ENG4 AAA THUNDERBOLT FIRE 15 | | 07/31 | DAVID BOX | 3 | ICP/0600 | ICP/1800 |
| E-102 ENG6 AZ-CCA ENG 836 | | 08/01 | RANDY JUSTUS | 3 | ICP/0600 | ICP/1800 |
| E-105 ENG6 OSPREY WILDFIRE LLC | | 07/29 | KEVIN ROE | 3 | ICP/0600 | ICP/1800 |
| E-108 ENG3 AZ-CEA ENG 66 | | 08/01 | BEN BUCHANAN | 4 | ICP/0600 | ICP/1800 |
| E-121 WTS2 H&H FIRE CONTR SVCS WT1 | | 07/30 | TOM FERRO | 1 | ICP/0600 | ICP/1800 |
| E-77 DOZ3 BIA ROADS | | 07/26 | JIM PHILLIPS | 2 | ICP/0600 | ICP/1800 |
| 6. Control Operations/Work Assignments: | | | | | | |
| TASK - Anchor and flank the fire perimeter from D/G division break south to G/K division break. PURPOSE - Protect natural resources and prevent fire spread toward Hwy 21. END STATE - Fire is contained south of Cache Creek Rd along Keller Butte Rd toward Div K division break. | | | | | | |
| 7. Special Instructions: | | | | | | |
| Utilize direct line tactics where possible. Burn out indirect line as needed. | | | | | | |
| 8. Division/Group Communication Summary | | | | | | |
| Function | Channel | RX Frequency N/W | RX Tone/NAC | TX Frequency N/W | TX Tone/NAC | Mode |
| COMMAND | 6 | 159.4275 | 192.8 | 151.2725 | 192.8 | A |
| TACTICAL | 5 | 166.7750 | 123.0 | 166.7750 | 123.0 | A |
| AIR TO GROUND | 14 | 171.6750 | | 171.6750 | | A |
| 9. Prepared By (Resource Unit Leader) | | | Approved By (Planning Section Chief) | | Date | Time |
| JILL JOHNSON | | | HOWARD JOHNSON | | 07/22/2021 | 2000 |

Division/Group Assignment List (ICS 204 WF)
Controlled Unclassified Information//Basic

| | | | | | | |
|---|---------|--------------------------------------|---|----------------------------------|---|--|
| 1. Incident Name: | | | | 3. | | |
| CHUWEAH CREEK FIRE | | | | Branch: | Division/Group K/W | |
| 2. Operational Period: DAY/NIGHT | | | | | | |
| Date/Time From: 07/23/2021 0600 FRI | | Date/Time To: 07/24/2021 0600 SAT | | | | |
| 4. Operations Personnel | | | | | | |
| OPERATIONS CHIEF | | AARON ROWE KURT RANTA (T) | | DIVISION/GROUP SUPERVISOR | | BOB HINDS |
| AIR SUPPORT SUPERVISOR | | TIM LYDA | | SAFETY OFFICER | | KEITH WAKEFIELD JACK CATES; TAIJA CORSO (T) |
| 5. Resources Assigned this Period | | | | | | |
| Strike Team / Task Force / Resource Designator | | LWD | Leader | Number Persons | Drop Off PT./Time | Pick Up PT./Time |
| O-1.66 SOF2 | | 07/27 | JOHN BARNES | 1 | ICP/0600 | ICP/1800 |
| O-112 TFLD (T) | | 07/29 | GARY HUGHES | 1 | ICP/0600 | ICP/1800 |
| O-152 FELB | | 07/31 | HENRY KUEHNE | 1 | ICP/0600 | ICP/1800 |
| O-122 FMOD BAILEY LOGGING | | 07/29 | JOSH NEWMAN | 2 | ICP/0600 | ICP/1800 |
| O-123 FMOD BROTHERS FIRE LLC | | 07/29 | TOM HOFFMAN | 2 | ICP/0600 | ICP/1800 |
| C-4 HC2I RSF - NWR1 | | 07/29 | JOSEPH WELBURN | 20 | ICP/0600 | ICP/1800 |
| C-5 HC2 PACIFIC COAST CONTRACTING | | 07/29 | NORBERTO PANTALEON | 20 | ICP/0600 | ICP/1800 |
| E-93 ENG4 BASIN WILDLAND RESPONSE B1 | | 07/30 | JOHN SCHALO | 3 | ICP/0600 | ICP/1800 |
| E-95 ENG3 WHETSTONE 322 | | 08/03 | DANIEL SPEER | 4 | ICP/0600 | ICP/1800 |
| E-98 ENG4 A TEAM WILDFIRE | | 07/30 | RICK SCHMITTLE | 2 | ICP/0600 | ICP/1800 |
| E-103 ENG6 LATE SUMMERS WF 05 | | 07/29 | DUANE REESE | 3 | ICP/0600 | ICP/1800 |
| E-106 ENG6 TIMBERMANS QUAL TREE SVC 2 | | 07/29 | JACK HENDRIX | 3 | ICP/0600 | ICP/1800 |
| E-107 ENG5 LATE SUMMERS WF 4 | | 08/01 | JOSH CROLLARD | 3 | ICP/0600 | ICP/1800 |
| E-88 SKG3 SKIDGINE | | 07/28 | SCOTT SHINALL | 2 | ICP/0600 | ICP/1800 |
| E-76 WT2 BIA ROADS T3 | | 07/26 | KERRY CARDEN | 1 | ICP/0600 | ICP/1800 |
| E-84 WTS2 RAINS CONTRACTING 3 | | 07/29 | JIM HUTTON | 1 | ICP/0600 | ICP/1800 |
| 8. Division/Group Communication Summary | | | | | | |
| Function | Channel | RX Frequency N/W | RX Tone/NAC | TX Frequency N/W | TX Tone/NAC | Mode |
| COMMAND | 7 | 170.4500 | 123.0 | 168.1000 | 123.0 | A |
| TACTICAL | 3 | 168.6000 | 123.0 | 168.6000 | 123.0 | A |
| AIR TO GROUND | 14 | 171.6750 | | 171.6750 | | A |
| 9. Prepared By (Resource Unit Leader) | | | Approved By (Planning Section Chief) | | Date | Time |
| JILL JOHNSON | | | HOWARD JOHNSON | | 07/22/2021 | 2000 |

Division/Group Assignment List (ICS 204 WF)
Controlled Unclassified Information//Basic

| | | | | | | |
|--|---------|---|---|----------------------------------|---|--|
| 1. Incident Name: | | | | 3. | | |
| CHUWEAH CREEK FIRE | | | | Branch: | Division/Group K/W | |
| 2. Operational Period: DAY/NIGHT | | | | | | |
| Date/Time From: 07/23/2021 0600 FRI | | Date/Time To: 07/24/2021 0600 SAT | | | | |
| 4. Operations Personnel | | | | | | |
| OPERATIONS CHIEF | | AARON ROWE KURT RANTA (T) | | DIVISION/GROUP SUPERVISOR | | BOB HINDS |
| AIR SUPPORT SUPERVISOR | | TIM LYDA | | SAFETY OFFICER | | KEITH WAKEFIELD JACK CATES; TAIJA CORSO (T) |
| 5. Resources Assigned this Period | | | | | | |
| Strike Team / Task Force / Resource Designator | | LWD | Leader | Number Persons | Drop Off PT./Time | Pick Up PT./Time |
| E-85 WTS2 ALL WET WATER TRUCKING | | 07/30 | WILLIAM HOOVER | 1 | ICP/0600 | ICP/1800 |
| E-24 DOZ3 JONES LOGGING | | 07/27 | JASON JONES | 2 | ICP/0600 | ICP/1800 |
| E-57 UTV | | | -- NONE -- | | ICP/0600 | ICP/1800 |
| E-17 ALS AMBU 1 LIFELINE | | 07/27 | HEIDI LARSON | 2 | ICP/0600 | ICP/1800 |
| E-134 UTV (MEDICAL ONLY) | | | AMBU 1 STAFF USE AS NEEDED | | ICP/0600 | ICP/1800 |
| 6. Control Operations/Work Assignments: | | | | | | |
| TASK - Anchor and flank the fire perimeter from W/K division break to the K/G division break. PURPOSE - Protect natural resources and property southeast of the fire. END STATE - The fire is contained northeast of Buffalo Lake and west of Keller Butte Rd. | | | | | | |
| 7. Special Instructions: | | | | | | |
| Utilize direct line tactics where possible. Burn out indirect line as needed. | | | | | | |
| 8. Division/Group Communication Summary | | | | | | |
| Function | Channel | RX Frequency N/W | RX Tone/NAC | TX Frequency N/W | TX Tone/NAC | Mode |
| COMMAND | 7 | 170.4500 | 123.0 | 168.1000 | 123.0 | A |
| TACTICAL | 3 | 168.6000 | 123.0 | 168.6000 | 123.0 | A |
| AIR TO GROUND | 14 | 171.6750 | | 171.6750 | | A |
| 9. Prepared By (Resource Unit Leader) | | | Approved By (Planning Section Chief) | | Date | Time |
| JILL JOHNSON | | | HOWARD JOHNSON | | 07/22/2021 | 2000 |

Division/Group Assignment List (ICS 204 WF)
Controlled Unclassified Information//Basic

| | | | | | | |
|---|---------|--------------------------------------|---|----------------------------------|-----------------------|---|
| 1. Incident Name: | | | 3. | | | |
| CHUWEAH CREEK FIRE | | | Branch: | | Division/Group | |
| 2. Operational Period: DAY/NIGHT | | | | | NIGHT | |
| Date/Time From: 07/23/2021 0600 FRI | | Date/Time To: 07/24/2021 0600 SAT | | | | |
| 4. Operations Personnel | | | | | | |
| OPERATIONS CHIEF | | AARON ROWE KURT RANTA (T) | | DIVISION/GROUP SUPERVISOR | | MICHAEL JACKSON |
| AIR SUPPORT SUPERVISOR | | TIM LYDA | | SAFETY OFFICER | | JACK CATES ; KEITH WAKEFIELD TAIJA CORSO (T) |
| 5. Resources Assigned this Period | | | | | | |
| Strike Team / Task Force / Resource Designator | | LWD | Leader | Number Persons | Drop Off PT./Time | Pick Up PT./Time |
| O-49 TFLD | | | CODY DESUATEL | 1 | ICP/1800 | ICP/0600 |
| E-7 ENG6 NORTHERN COLUMBIA REFOR | | 07/27 | LENORD DENISON | 2 | ICP/1800 | ICP/0600 |
| E-10 ENG6 EARLY WINTERS | | 08/01 | CHRIS SURFACE | 3 | ICP/1800 | ICP/0600 |
| E-12 ENG6 AEGIS LOGISTICS | | 07/27 | ROY VARENEY | 3 | ICP/1800 | ICP/0600 |
| E-13 ENG6 AEGIS LOGISTICS | | 07/27 | KERRI HENDRIX | 3 | ICP/1800 | ICP/0600 |
| E-94 ENG4 UTTING CONSTRUCTION | | 07/30 | STEPHEN BAILEY | 3 | ICP/1800 | ICP/0600 |
| E-53 WTS3 JRD CONSTRUCTION | | 08/04 | DENNIS PAYNE | 1 | ICP/1800 | ICP/0600 |
| E-76 WTS2 BIA | | 07/26 | BLAIN COVINGTON | 1 | ICP/1800 | ICP/0600 |
| E-77 DOZ3 BIA | | 07/26 | GEORGE BATTEN | 2 | ICP/1800 | ICP/0600 |
| E-123 DOZ3 MCCLURE | | 07/29 | DON WILSON | 2 | ICP/1800 | ICP/0600 |
| E-92 ALS AMBU 2 | | 07/29 | TAYLOR MORROW | 2 | ICP/1800 | ICP/0600 |
| O-93 EMPF MEDIC 3 | | 07/28 | BRIAN SPENDLOVE | 1 | ICP/1800 | ICP/0600 |
| 8. Division/Group Communication Summary | | | | | | |
| Function | Channel | RX Frequency N/W | RX Tone/NAC | TX Frequency N/W | TX Tone/NAC | Mode |
| COMMAND | 6 | 159.4275 | 192.8 | 151.2725 | 192.8 | A |
| COMMAND | 7 | 170.4500 | 123.0 | 168.1000 | 123.0 | A |
| TACTICAL | 4 | 166.7250 | 123.0 | 166.7250 | 123.0 | A |
| AIR TO GROUND | 14 | 171.6750 | | 171.6750 | | A |
| 9. Prepared By (Resource Unit Leader) | | | Approved By (Planning Section Chief) | | Date | Time |
| JILL JOHNSON | | | HOWARD JOHNSON | | 07/22/2021 | 2000 |

Division/Group Assignment List (ICS 204 WF)
Controlled Unclassified Information//Basic

| | | | | | | |
|---|---------|--------------------------------------|---|----------------------------------|-----------------------|---|
| 1. Incident Name: | | | 3. | | | |
| CHUWEAH CREEK FIRE | | | Branch: | | Division/Group | |
| 2. Operational Period: DAY/NIGHT | | | | | NIGHT | |
| Date/Time From: 07/23/2021 0600 FRI | | Date/Time To: 07/24/2021 0600 SAT | | | | |
| 4. Operations Personnel | | | | | | |
| OPERATIONS CHIEF | | AARON ROWE KURT RANTA (T) | | DIVISION/GROUP SUPERVISOR | | MICHAEL JACKSON |
| AIR SUPPORT SUPERVISOR | | TIM LYDA | | SAFETY OFFICER | | JACK CATES ; KEITH WAKEFIELD TAIJA CORSO (T) |
| 5. Resources Assigned this Period | | | | | | |
| Strike Team / Task Force / Resource Designator | | LWD | Leader | Number Persons | Drop Off PT./Time | Pick Up PT./Time |
| | | | | | | |
| | | | | | | |
| 6. Control Operations/Work Assignments: | | | | | | |
| <p>Div A/Z TASK - Patrol structures and fire perimeter. PURPOSE - Protect property and resources. END STATE - Fire is contained within the current perimeter and the threat to structures is eliminated.</p> <p>Div D TASK - Anchor and flank the fire perimeter from A/D division break, south to the D/G division break. Secure Incident 90. PURPOSE - Protect resources & property north of fire perimeter. END STATE - Fire is contained north of Cache Creek Rd. Incident 90 lined and secured. Structures secured south of Cache Creek Rd.</p> <p>Div G TASK - Anchor and flank the fire perimeter from D/G division break south to G/K division break. PURPOSE - Protect natural resources and prevent fire spread toward Hwy 21. END STATE - Fire is contained south of Cache Creek Rd along Keller Butte Rd toward Div K division break.</p> <p>Div K/W TASK - Anchor and flank the fire perimeter from W/K division break to the K/G division break. PURPOSE - Protect natural resources and property southeast of the fire. END STATE - The fire is contained northeast of Buffalo Lake and west of Keller Butte Rd.</p> | | | | | | |
| 7. Special Instructions: | | | | | | |
| Utilize direct line tactics where possible. Burn out indirect line as needed. | | | | | | |
| 8. Division/Group Communication Summary | | | | | | |
| Function | Channel | RX Frequency N/W | RX Tone/NAC | TX Frequency N/W | TX Tone/NAC | Mode |
| COMMAND | 6 | 159.4275 | 192.8 | 151.2725 | 192.8 | A |
| COMMAND | 7 | 170.4500 | 123.0 | 168.1000 | 123.0 | A |
| TACTICAL | 4 | 166.7250 | 123.0 | 166.7250 | 123.0 | A |
| AIR TO GROUND | 14 | 171.6750 | | 171.6750 | | A |
| 9. Prepared By (Resource Unit Leader) | | | Approved By (Planning Section Chief) | | Date | Time |
| JILL JOHNSON | | | HOWARD JOHNSON | | 07/22/2021 | 2000 |

AIR OPERATIONS SUMMARY

PREPARED BY: Tim Lyda

PREPARED DATE/TIME: July 22,1700 hrs

| | |
|------------------------------------|--|
| INCIDENT NAME CHUWEAH CR | 2. OPERATIONAL PERIOD: Date: 7/23/2021 Helibase Start Time: 0830 End Time: 2030 Sunrise: 0520 Sunset: 2048 (Times valid for Nespelem) |
|------------------------------------|--|

| | | |
|---|---|--|
| 3. REMARKS (Safety Notes, Hazards, Air Operations Special Equipment, etc.): General Aviation, See & Avoid Bucket work, Retardant drops: ensure area is clear of ground personnel before dropping; watch for wires; be aware of potential for turbulence at ridge tops, saddles, canyons, etc *** BE AWARE OF FATIGUE, TAKE LONGER BREAKS WHEN FLYING IN SMOKEY CONDITIONS. *** Report all TFR intrusions to Air Operations, Air Support or Helibase as soon as possible. | 4. MEDEVAC A/C: Contact Mt Tolman Fire Center 509-634-3100 Or Chuweah Cr Comm 509-634-2022 | 5. TFR #1/8801 (A20) Freq: 118.400 |
|---|---|--|

| 6. PERSONNEL LWD | Phone | 7. FREQUENCIES | AM | FM | 8. FIXED-WING | # Avail / Type/ Make-Model / FAA N# / Base(s) |
|----------------------------|--------------|--------------------------|----------|---------------------|--------------------|--|
| AOBD: Mike Davis (virtual) | 509-699-9350 | AIR/AIR Primary (A-6) | 118.4000 | | Fixed Wing/Buckets | DIVS order thru ATGS if up,or Communications |
| ASGS: Tim Lyda O-1.37 | 206-473-1425 | AIR/AIR Secondary (A-7) | 124.2500 | | | |
| HEBM: | | AIR/GROUND Primary (A-4) | | 171.6750 | ATGS Aircraft | AA Patrick McCabe 690 Commander N364WA, IA AA Matt Woosely 509-322-5260 500 Commander N531SA (A-54) LATs Order through Air Attack/AOBD Mt Tolman Dispatch |
| HEMG: | | AIR/GROUND Secondary | | 156.0225 T-103.5 | | |
| ATGS: Matt Woosley O-101 | 509-322-5260 | DNR-AIR/GROUND IA | | 159.270 T-103.5 | | |
| ATGS: | | AIR/Ground Ch 51 IA | | 168.3125 | NOTES: | ICP helispot: N48 08 023 W118 59 226 |
| Mt Tolman: | 509-634-3100 | UNICOM OMAK | 122.8 | | | |
| Debbie Coudell | 509-570-4133 | DECK | | | | |
| Michelle | 509-675-0675 | | | | | email costs to timlyda22@gmail.com |

9. HELICOPTERS

| FAA N# | TY | MAKE/MODEL | BASE | START | AVAIL | REMARKS | FAA N# | TY | MAKE/MODEL | BASE | START | AVAIL | REMARKS |
|--------|----|------------|------|-------|-------|------------------|--------|----|------------|------|-------|-------|---------|
| N448JS | 1 | S-61 | OMK | 0800 | 0900 | Long Line Bucket | | | | | | | |
| N947CH | 1 | CH-47 | OMK | 0800 | 0900 | Long Line Bucket | | | | | | | |

INCIDENT RADIO COMMUNICATIONS PLAN (ICS 205)

Controlled Unclassified Information//Basic

| | | | |
|--------------------------|--------------------------------|---|--------------------------------------|
| 1. Incident Name: | 2. Date/Time Prepared: | 3. Operational Period: DAY/NIGHT | |
| CHUWEAH CREEK FIRE | Date: 07/22/2021 Time: 2000 | Date/Time From: 07/23/2021 0600 FRI | Date/Time To: 07/24/2021 0600 SAT |

4. Basic Radio Channel Use:

| Zone Group | Ch # | Function | Channel Name/Trunked Radio System Talkgroup | Assignment | RX Freq | RX Tone/NAC | TX Freq | TX Tone/NAC | Mode (A,D, or M) | Remarks |
|------------|------|---------------|---|-------------------------|----------|-------------|----------|-------------|------------------|------------------------------|
| | 1 | TACTICAL | TAC 1 | DIV A / Z | 168.0500 | 123.0 | 168.0500 | 123.0 | A | |
| | 2 | TACTICAL | TAC 2 | DIV D | 168.2000 | 123.0 | 168.2000 | 123.0 | A | |
| | 3 | TACTICAL | TAC 3 | DIV K / W | 168.6000 | 123.0 | 168.6000 | 123.0 | A | |
| | 4 | TACTICAL | TAC 4 | NIGHT | 166.7250 | 123.0 | 166.7250 | 123.0 | A | |
| | 5 | TACTICAL | TAC 5 | DIV G | 166.7750 | 123.0 | 166.7750 | 123.0 | A | |
| | 6 | COMMAND | CMD 6 | NORTH | 159.4275 | 192.8 | 151.2725 | 192.8 | A | CODY BUTTE - LINKED TO CMD 7 |
| | 7 | COMMAND | CMD 7 | SOUTH | 170.4500 | 123.0 | 168.1000 | 123.0 | A | KELLER LO - LINKED TO CMD 6 |
| | 8 | COMMAND | CMD 8 | BACKUP COMMAND | 169.7250 | 88.5 | 164.2500 | 100.0 | A | FIRE A - MOSES MTN |
| | 9 | COMMAND | KELLER REPEATER | IA | 169.7125 | 136.5 | 164.1625 | 123.0 | A | FIRE B - KELLER LO |
| | 10 | COMMAND | MOSES REPEATER | IA | 169.7125 | 136.5 | 164.1625 | 100.0 | A | FIRE B - MOSES MTN |
| | 11 | TACTICAL | WA REDNET | IA | 153.8300 | | 153.8300 | | A | IA ONLY |
| | 12 | TACTICAL | FIRE C TAC | IA | 166.9750 | 151.4 | 166.9750 | 151.4 | A | IA ONLY |
| | 13 | AIR TO GROUND | A/G 51 | IA | 168.3125 | | 168.3125 | | A | IA ONLY |
| | 14 | AIR TO GROUND | A/G PRI | ALL DIVS | 171.6750 | | 171.6750 | | A | AIR TO GROUND PRIMARY |
| | 15 | AIR TO GROUND | A/G SEC | AIR TO GROUND SECONDARY | 156.0225 | 103.5 | 156.0225 | 103.5 | A | LOW POWER ONLY - NO MOBILES |
| | 16 | AIR GUARD | AIRGUARD | AIRGUARD | 168.6250 | | 168.6250 | 110.9 | A | EMERGENCY AIR TRAFFIC ONLY |

5. Special Instructions:

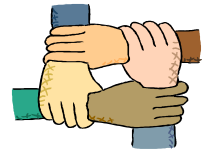
| | | |
|---|--------------------|--------------------------------|
| 6. Prepared By (Communications Unit Leader) | Name: MISSY PARKER | Signature: <i>Missy Parker</i> |
| ICS 205 | IAP Page | Date/Time: 07/22/2021 2000 |

Controlled Unclassified Information//Basic

FINAL



Human Resource Message



Chuweah Creek Fire, July 23, 2021

Core Values are Timeless Guiding Principles

Fire's core values reflect more than just firefighting. They are about who you are, how you approach your job, and how you treat people.

- Diversity is an asset as people's differences can bring new perspectives and approaches, so take the time to learn your colleagues' history and personal values to gain ideas and an understanding that you may not have considered.
- In fire, we focus on protecting life, property, and resources, but we need to protect each other. Sometimes the right choice is not the easy choice, but you will never regret doing the right thing by treating someone well.
- Take a moment to think about what Duty, Respect, and Integrity mean to you, and how you can apply them to your job, your team, the fire community, on this fire, your family. It takes Courage to stand apart from the crowd and act upon the other core values.



Thank you for your service.

We appreciate you and so does the community.

Please stay safe and have a good day!

Susie Manezes, PNW-Team 12- (HRSP) Contact Number: 602-571-9327
Food Bank Donations will go directly to Nespelem Head Start. Thank you!

*Chuweah Creek Fire
Incident Training Program*

A (Virtual) TNSP is available to help with training related issues and incident documentation for your training assignment.

To receive documented credit for your assignment, Click the link or scan the QR Code below to access and complete the Trainee Registration Form. Once registered you will receive additional instructions via text. For training related questions, call or text Brad Smith (TNSP) at 209-770-4809 or email bradley_smith@firenet.gov (Be sure to list "Chuweah Creek" on any correspondence)

[Chuweah Creek - Trainee Registration Form](#)



LOGISTICS MESSAGE

KITCHEN

Breakfast 0500 – 0900

Dinner 1700-2200

Lunches and ice are available at the refrigerated trailers.

SHOWERS

Open hours

0500 - 1200 and 1400 - 2200

GROUND SUPPORT

Ground Support hours **0600-2200**

Attention WEX card users... Fuel is available in Nespelem at Jacksons Service Station. See ground support for directions.

SUPPLY

Cache hours **0600-2200**

Cache orders prior to 0900 should be delivered same day.

-CAMPING NOTE-

***Attention all personnel camping around the Pow-wow grounds -
All tents need to be set up at least 5 feet from any of the structures/sheds
anywhere in the area. If your tent is already set up within 5 feet, it needs to be
moved at least 5 feet (or more) away from structures.***



Chuweah Creek Fire Finance

FSC2 – Cheri Fuller, FSC2 (T) Christina Goebel

Email : 2021.chuweahcreek.finance@firenet.gov

Phone: 425-495-3420

Hours of operation 0530 – 2200

If you haven't checked in with finance, you need to do so if you would like to be paid. The finance chiefs will be at briefing every morning, so if you have time to turn in or questions please come see us.

Need to see the following ...

C-7

E-91
E-131

O-46
O-49
O-66 need to see
O-100
O-144
O-161 need to see

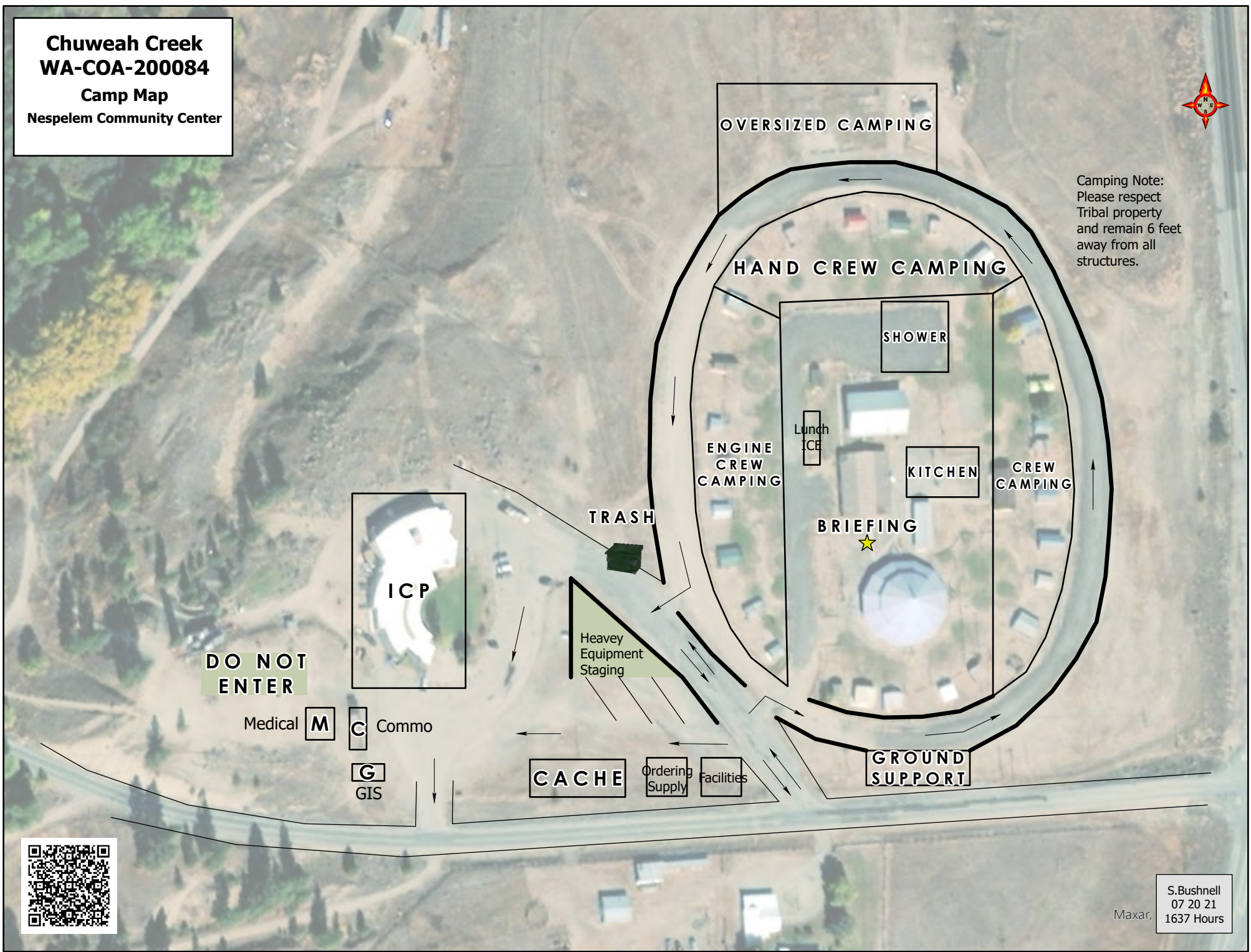
Thank you and remember to be safe

**Chuweah Creek
WA-COA-200084**

**Camp Map
Nespelem Community Center**



Camping Note:
Please respect
Tribal property
and remain 6 feet
away from all
structures.



**DO NOT
ENTER**

Medical **M** **C** Commo

G
GIS

CACHE Ordering Supply Facilities

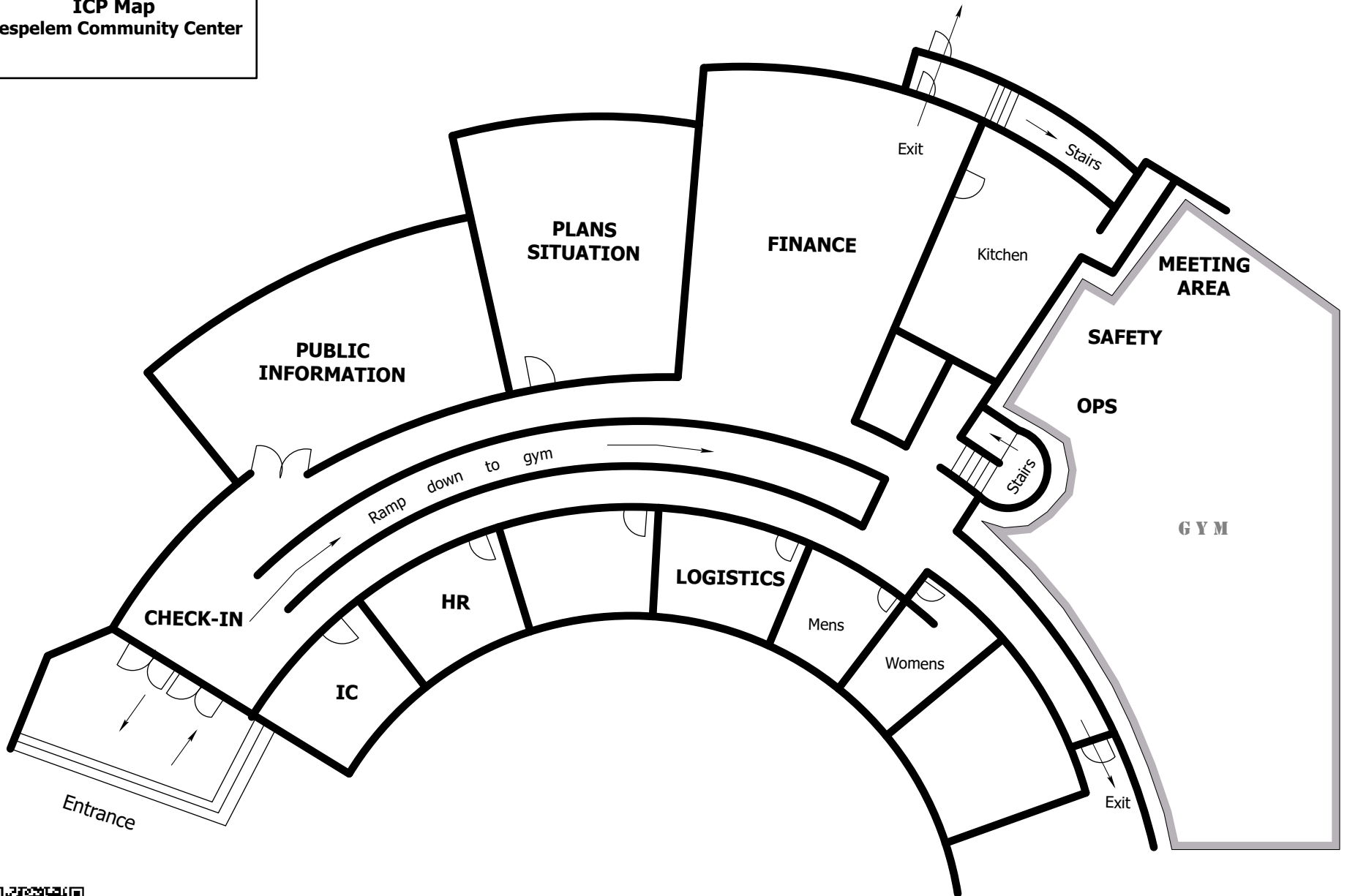
**GROUND
SUPPORT**



S. Bushnell
07 20 21
1637 Hours
Maxar,

**Chuweah Creek
WA-COA-200084**

**ICP Map
Nespelem Community Center**



S.Bushnell
07 20 21
1511 Hours

Incident Maps

For incident maps scan the QR code on the cover of the IAP to open the 'Current Maps' folder.

Note: Sometimes the local area's cellular network is not fast enough for large file downloads. This may result in a browser timeout and error message about the map not being able to download to be displayed. The Community Center has a guest Wi-Fi that can be utilized.

How to Download and Open Maps in Avenza

Method 1: From a browser

1. Tap on the desired map link and wait for the preview.
** If it fails to load, use method 2 instead*
2. Tap the 'send to' icon (square with up arrow)
3. Choose the Avenza app

Method 2: From Avenza direct

1. Tap and hold on the desired map link, then choose 'copy' to copy the direct URL to the map
2. Launch the Avenza app
3. When not in any map... Tap the + (plus) icon at the top of the screen
4. Choose the load from URL option (last choice)
5. Paste the direct URL to the map
6. Tap 'Done' ; the map will begin downloading

How to Send Map Updates to the Situation Unit

Send map updates by email to 2021.chuweahcreek.situation@firenet.gov or text/call the Situation Unit at 360-584-3373. Make sure to include your name, position and explanation of the update you send.

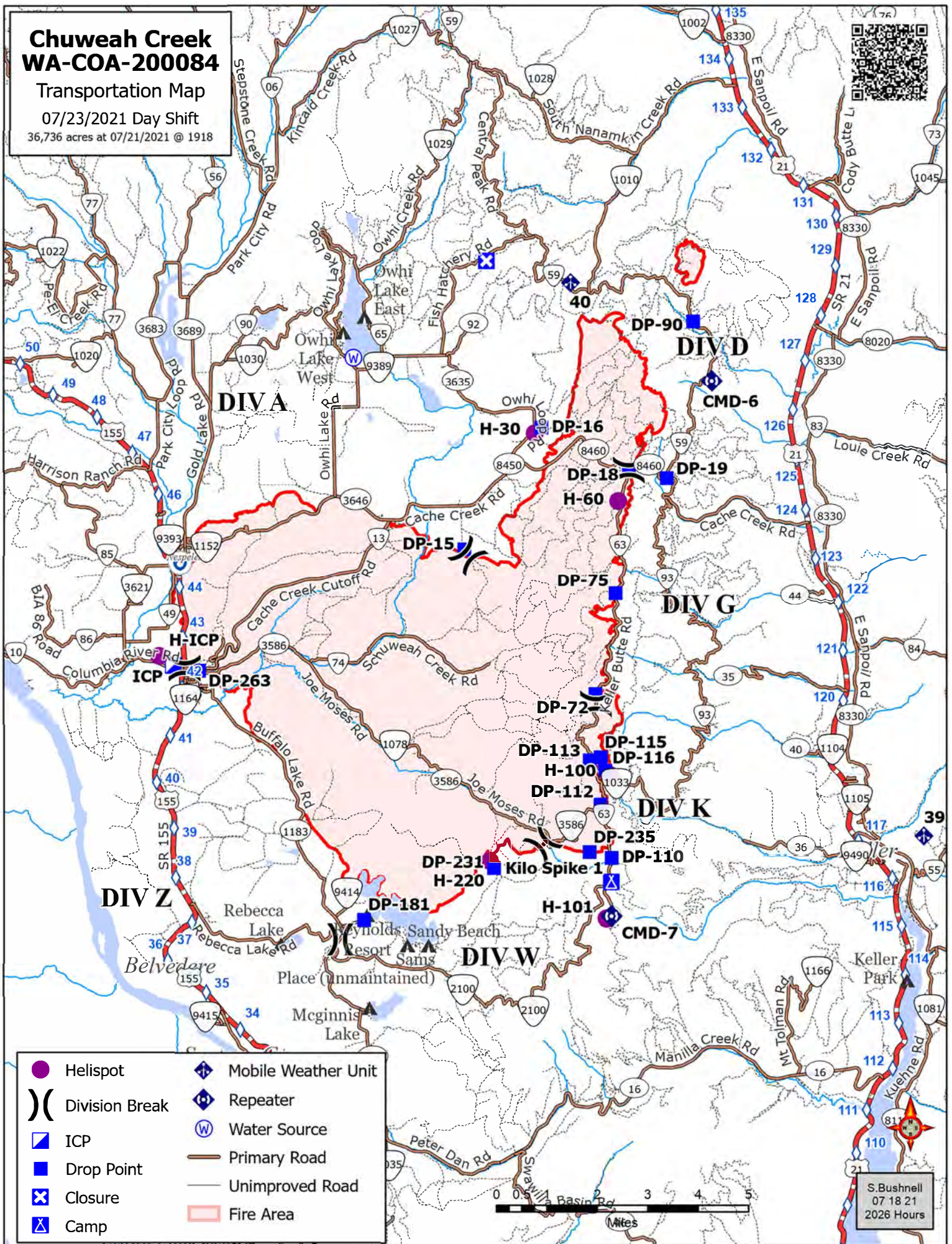
1. Open the map in Avenza.
2. Click the pin with three lines near the lower-right corner.
3. *iPhone:* In the lower right, click the square with up arrow. From the pop-up menu, choose Export to Others.
Android: In the lower right, click the circle with three lines. Click the pop-up circle with up arrow.
4. Set these options:
 - a. Filename – leave alone
 - b. Export Format – choose SHP, GPX or XML
 - c. Data – all features
 - d. Image size – no image
5. Click the Export button in the upper-right corner.
6. When the export is ready, choose your Mail application.
7. Send the email to 2021.chuweahcreek.situation@firenet.gov.
8. Your email needs to include an explanation of the data you are sending.

Chuweah Creek WA-COA-200084

Transportation Map

07/23/2021 Day Shift

36,736 acres at 07/21/2021 @ 1918



| | | | |
|--|------------|--|---------------------|
| | Helispot | | Mobile Weather Unit |
| | ICP | | Repeater |
| | Drop Point | | Water Source |
| | Closure | | Primary Road |
| | Camp | | Unimproved Road |
| | Fire Area | | |



S. Bushnell
07 18 21
2026 Hours



CHUWEAH CREEK FIRE COVID-19 MITIGATIONS:

- Individuals who have not been vaccinated should continue to wear masks indoors.
- Conduct daily verbal screening checks within crews, report any COVID-like symptoms to your direct supervisor. Supervisors should report any positive symptoms to the Medical Unit for next steps.
- Observe “Module as One” practices between crews, observe 6-foot distancing from others crews and modules.
- Limit traffic inside of the ICP building to Incident Management Team members and essential visitors.
- Observe 6-foot spacing standards while in line for food. Send crew representatives to pick up meals.
- Wash hands frequently and disinfect high-traffic areas on a regular basis.
- Limit close contact between firefighters and the public as much as possible to prevent exposure and spread.
- Use the Zoom link provided to join briefings remotely

| | | | |
|-------------------------------------|--------------------------|------------------------------------|-----------------------|
| UNIT LOG | 1. Incident Name | 2. Date Prepared | 3. Time Prepared |
| | 4. Unit Name/Designators | 5. Unit Leader (Name and Position) | 6. Operational Period |
| 7. Personnel Roster Assigned | | | |
| Name | ICS Position | Home Base | |
| | | | |
| | | | |
| | | | |
| | | | |
| | | | |
| | | | |
| | | | |
| | | | |
| | | | |
| | | | |
| | | | |
| | | | |
| | | | |
| | | | |
| | | | |
| | | | |
| | | | |
| | | | |
| | | | |
| | | | |
| | | | |
| | | | |
| | | | |
| | | | |
| | | | |
| | | | |
| | | | |
| | | | |
| | | | |
| | | | |
| | | | |
| | | | |
| | | | |
| | | | |
| | | | |
| | | | |
| | | | |
| | | | |
| | | | |
| | | | |
| | | | |
| | | | |
| | | | |
| 8. Activity Log | | | |
| Time | Major Events | | |
| | | | |
| | | | |
| | | | |
| | | | |
| | | | |
| | | | |
| | | | |
| | | | |
| | | | |
| | | | |
| | | | |
| | | | |
| | | | |
| | | | |
| | | | |
| | | | |
| | | | |
| | | | |
| | | | |
| | | | |
| | | | |
| | | | |
| | | | |
| | | | |
| | | | |
| | | | |
| | | | |
| | | | |
| | | | |
| | | | |
| | | | |
| | | | |
| | | | |
| | | | |
| | | | |
| | | | |
| 9. Prepared by (Name and Position) | | | |

EMERGENCY PLAN

INCIDENT WITHIN AN INCIDENT

ON SCENE SUPERVISOR

In the event of an accident or medical incident of any size, your primary responsibility is to ENSURE that the victim(s) receive prompt and effective Triage, Treatment and Transportation.

- Conduct size-up of the incident (nature of accident, number type of resources involved, latitude and longitude location): notify incident communications center and supervisor, request assistance as needed.
- Order and coordinate medical and support response to the accident.
- Evaluate special needs (law enforcement, haz mat, etc.).
- Clear the command frequency if medical emergency; coordinate with incident communications and air attack for air medical transportation needs
- Preserve and photograph the scene for accident investigation.
- Remain aware of surroundings and the status of the main incident (delegate personnel to monitor the main fire) to ensure safety of medical treatment personnel.
- Until relieved, supervise and manage all personnel involved at the incident scene.
- **ENSURE THE MEDICAL INCIDENT REPORT IN THE INCIDENT ACTION PLAN IS BEING USED AND FOLLOWED.**

MEDICAL PLAN (ICS 206 WF)

| | | | | | | | | | |
|---|---|--|---|---|--|---------------------------------|---------------|---|----------------|
| 20 Incident/Project Name | | 1. Operational Period | | | | | | | |
| Chuweah Creek Fire | | Date/Time July 23-24, 2021 0600-0600 | | | | | | | |
| 2. Ambulance Services | | | | | | | | | |
| Name | Complete Address | Phone | | Advanced Life Support (ALS) | | | | | |
| | | Yes | No | | | | | | |
| Colville Tribal EMS Nespelem, WA | 410 10 th St. Nespelem, WA 99155 | Dispatch 509-978-9323 | | | | x | | | |
| Lifeline Ambulance | 912 Koala Ave Omak, WA 98841 | Dispatch 509-663-8091 | | x | | | | | |
| 3. Air Ambulance Services | | | | | | | | | |
| Name | | Phone | | Type of Aircraft & Capability | | | | | |
| Airlift Northwest | | 800-426-2430 or 911 | | Rotor in Wenatchee | | | | | |
| Life Flight Network | | 800-232-0911 | | 2 Rotors, 1 Fixed Wing, Spokane | | | | | |
| 4. Hospitals | | | | | | | | | |
| Name Complete Address | | GPS Datum – WGS 84 Coordinate Standard Degrees Decimal Minutes DD° MM.MMM' N - Lat DD° MM.MMM' W - Long | | Travel Time From ICP | | Helipad Yes No | | Level of Care Facility | |
| | | Lat: | Long: | Air | Gnd | | | | |
| Coulee Medical Center 411 Fortuyn Rd Grand Coulee, WA 99133 | | 44°56.5186'N | 119°0.4333'W | 20 Min | 40 Min | 509-633-1753 | | X | Level 4 Trauma |
| | | VHF: | | | | | | | |
| | | Confluence Health Hospital (Central Washington Hospital) 1201 S Miller St. Wenatchee, WA 98801 | | 47°24.4340'N | 120°19.3664'W | 1 Hr | 2Hr | 509-662-1511 | |
| VHF: | | | | 10 Min | 30 Min | | | | |
| Mid-Valley Hospital 912 Koala Ave Omak, WA 98841 | | | | 48°23.8336'N | 119°32.8758 | 40 Min | 1 Hr 14min | 509-826-1760 | |
| | | VHF : | | | | | | | |
| | | Harborview Medical 325 9 th Ave Seattle, WA 98104 | | 47°36.1897'N | 122°19.4759'W | 2 Hr | 4 Hr | 541-222-6929 | |
| VHF: | | | | 15 Min | 30 Min | | | | |
| | | | | 5. Division Branch Group | | Capability | | Personnel | |
| | | Div D | BLS Ambo 3 Greys Harbor (E113) EMT 2 Brantner (E-19) | | | | | | |
| Div G | Unstaffed | | | | | | | | |
| Div A/Z | Unstaffed | | | | | | | | |
| Div K/W | ALS Ambo 1 Lifeline (E-17) Medical UTV (E-134) (Staffed by Ambo 1) | | | | | | | | |
| Night Shift | ALS Ambo 2 Lifeline (E 92) Medic 3 Spendlove (O-93) | | | | | | | | |
| 6. Prepared By (Medical Unit Leader) | | | 7. Date/Time | | 8. Reviewed By (Safety Officer) | | | 9. Date/Time | |
| Eamonn Ryan, Diana Braun, Lee Venning (T) <i>Eamonn Ryan</i> | | | 7-22-2021 1800 | | Taija Corso (T) <i>Taija Corso</i> | | | 7-22-2021 1800 | |

MEDICAL PLAN (ICS 206 WF)

Controlled Unclassified Information//Basic

Medical Incident Report

FOR A NON-EMERGENCY INCIDENT, WORK THROUGH CHAIN OF COMMAND TO REPORT AND TRANSPORT INJURED PERSONNEL AS NECESSARY.

FOR A MEDICAL EMERGENCY: IDENTIFY ON SCENE INCIDENT COMMANDER BY NAME AND POSITION AND ANNOUNCE "MEDICAL EMERGENCY" TO INITIATE RESPONSE FROM IMT COMMUNICATIONS/DISPATCH.

Use the following items to communicate situation to communications/dispatch.

1. CONTACT COMMUNICATIONS / DISPATCH (**Verify correct frequency prior to starting report**)

Ex: "Communications, Div. Alpha. Stand-by for Emergency Traffic."

2. INCIDENT STATUS: *Provide incident summary (including number of patients) and command structure.*

Ex: "Communications, I have a Red priority patient, unconscious, struck by a falling tree. Requesting air ambulance to Forest Road 1 at (Lat./Long.) This will be the Trout Meadow Medical, IC is TFLD Jones. EMT Smith is providing medical care."

| | | |
|---|---|---|
| Severity of Emergency / Transport Priority | <input type="checkbox"/> RED / PRIORITY 1 Life or limb threatening injury or illness. Evacuation need is IMMEDIATE <i>Ex: Unconscious, difficulty breathing, bleeding severely, 2° – 3° burns more than 4 palm sizes, heat stroke, disoriented.</i> <input type="checkbox"/> YELLOW / PRIORITY 2 Serious Injury or illness. Evacuation may be DELAYED if necessary. <i>Ex: Significant trauma, unable to walk, 2° – 3° burns not more than 1-3 palm sizes.</i> <input type="checkbox"/> GREEN / PRIORITY 3 Minor Injury or illness. Non-Emergency transport <i>Ex: Sprains, strains, minor heat-related illness.</i> | |
| Nature of Injury or Illness & Mechanism of Injury | | <i>Brief Summary of Injury or Illness (Ex: Unconscious, Struck by Falling Tree)</i> |
| Transport Request | | <i>Air Ambulance / Short Haul/Hoist Ground Ambulance / Other</i> |
| Patient Location | | <i>Descriptive Location & Lat. / Long. (WGS84)</i> |
| Incident Name | | <i>Geographic Name + "Medical" (Ex: Trout Meadow Medical)</i> |
| On-Scene Incident Commander | | <i>Name of on-scene IC of Incident within an Incident (Ex: TFLD Jones)</i> |
| Patient Care | | <i>Name of Care Provider (Ex: EMT Smith)</i> |

3. INITIAL PATIENT ASSESSMENT: *Complete this section for each patient as applicable (start with the most severe patient)*

Patient Assessment: See IRPG page 106

Treatment:

4. TRANSPORT PLAN:

Evacuation Location (if different): *(Descriptive Location (drop point, intersection, etc.) or Lat. / Long.)* Patient's ETA to Evacuation Location:

Helispot / Extraction Site Size and Hazards:

5. ADDITIONAL RESOURCES / EQUIPMENT NEEDS:

Example: Paramedic/EMT, Crews, Immobilization Devices, AED, Oxygen, Trauma Bag, IV/Fluid(s), Splints, Rope rescue, Wheeled litter, HAZMAT, Extrication

6. COMMUNICATIONS: Identify State Air/Ground EMS Frequencies and Hospital Contacts as applicable

| Function | Channel Name/Number | Receive (RX) | Tone/NAC * | Transmit (TX) | Tone/NAC * |
|-------------|---------------------|--------------|------------|---------------|------------|
| COMMAND | | | | | |
| AIR-TO-GRND | | | | | |
| TACTICAL | | | | | |

7. CONTINGENCY: **Considerations:** *If primary options fail, what actions can be implemented in conjunction with primary evacuation method? Be thinking ahead.*

8. ADDITIONAL INFORMATION: *Updates/Changes, etc.*

REMEMBER: Confirm ETA's of resources ordered. Act according to your level of training. Be Alert. Keep Calm. Think Clearly. Act Decisively.

Controlled Unclassified Information//Basic