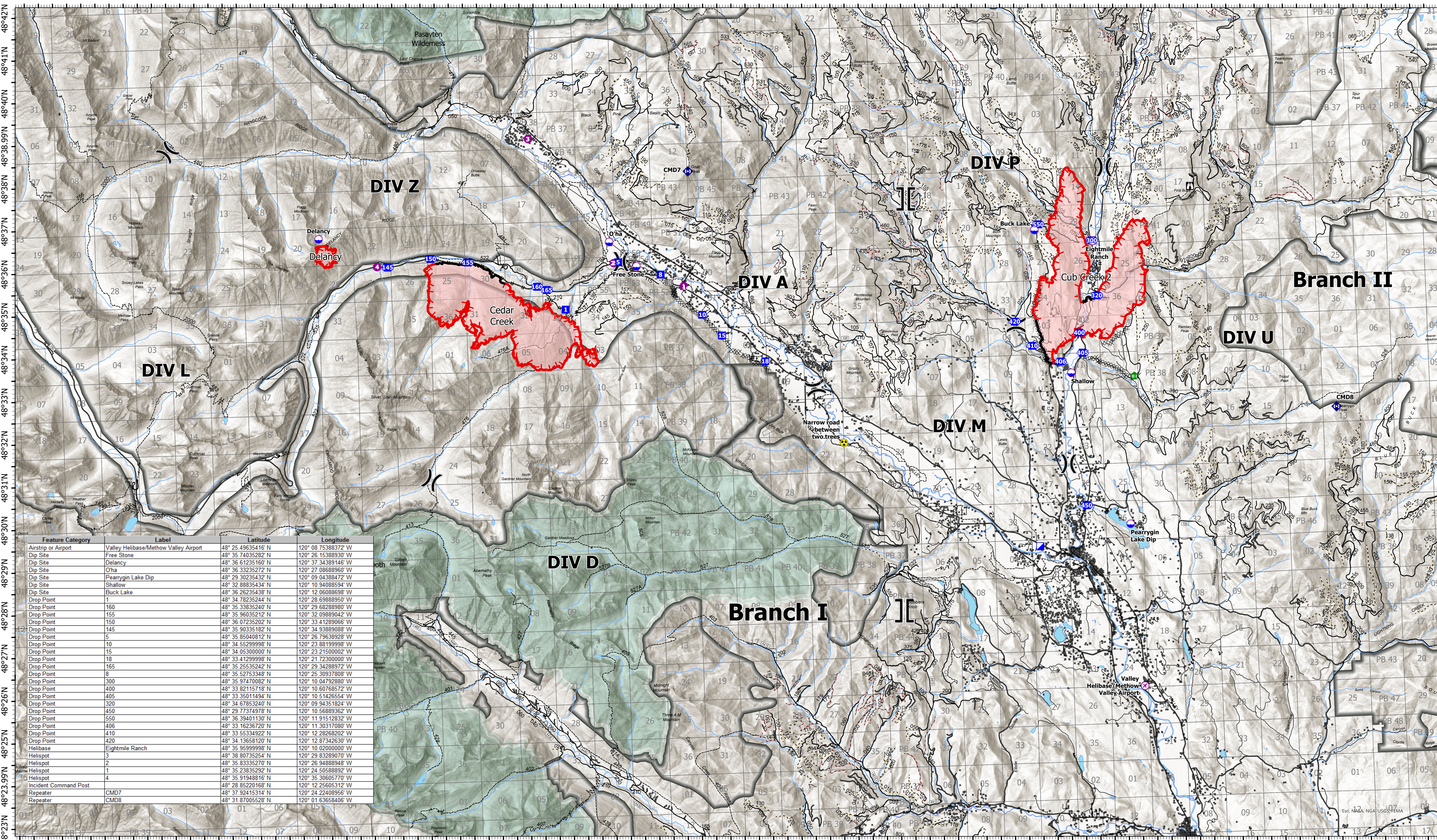


Communication

120°47.5'W 120°46'W 120°44.5'W 120°43'W 120°41.5'W 120°40'W 120°38.5'W 120°37'W 120°35.5'W 120°34'W 120°32.5'W 120°31'W 120°29.5'W 120°28'W 120°26.5'W 120°25'W 120°23.5'W 120°22'W 120°20.5'W 120°19'W 120°17.5'W 120°16'W 120°14.5'W 120°13'W 120°11.5'W 120°10'W 120°8.5'W 120°7'W 120°5.5'W 120°4'W 120°2.5'W 120°1'W 120°W 119°58.5'W



Feature Category	Label	Latitude	Longitude
Airstrip or Airport	Valley Helibase/Methow Valley Airport	48° 25.49635416' N	120° 08.75388372' W
Dip Site	Free Stone	48° 36.7403282' N	120° 26.15388930' W
Dip Site	Delancy	48° 36.61235160' N	120° 37.34389146' W
Dip Site	O'ha	48° 36.33235272' N	120° 27.08688960' W
Dip Site	Pearrygin Lake Dip	48° 29.30235432' N	120° 09.04388472' W
Dip Site	Shallow	48° 32.88835434' N	120° 10.94088594' W
Dip Site	Buck Lake	48° 36.26235438' N	120° 12.06088950' W
Drop Point	1	48° 34.78235244' N	120° 28.6988950' W
Drop Point	160	48° 36.33835240' N	120° 29.68288980' W
Drop Point	155	48° 36.96035212' N	120° 32.09889042' W
Drop Point	150	48° 36.07235202' N	120° 33.41289066' W
Drop Point	145	48° 35.90335182' N	120° 34.93889088' W
Drop Point	5	48° 35.85040812' N	120° 26.79638928' W
Drop Point	10	48° 34.55299998' N	120° 23.88199998' W
Drop Point	15	48° 34.05300000' N	120° 23.21500002' W
Drop Point	18	48° 33.41299998' N	120° 21.72300000' W
Drop Point	165	48° 36.26535242' N	120° 29.34288972' W
Drop Point	8	48° 35.52753348' N	120° 25.30937808' W
Drop Point	300	48° 35.97470082' N	120° 10.04792880' W
Drop Point	400	48° 33.82115718' N	120° 10.60768572' W
Drop Point	405	48° 33.35011494' N	120° 10.51426554' W
Drop Point	320	48° 34.67853240' N	120° 09.94351824' W
Drop Point	450	48° 29.77374978' N	120° 10.56889362' W
Drop Point	550	48° 36.39401130' N	120° 11.91512832' W
Drop Point	406	48° 33.16236720' N	120° 11.30317080' W
Drop Point	410	48° 33.65349222' N	120° 12.26282802' W
Drop Point	420	48° 34.13658120' N	120° 12.87342630' W
Helibase	Eightmile Ranch	48° 36.96999998' N	120° 10.02000000' W
Helispot	3	48° 38.80735254' N	120° 29.83289070' W
Helispot	2	48° 35.83335270' N	120° 26.94888948' W
Helispot	1	48° 35.23835292' N	120° 24.50588892' W
Helispot	4	48° 35.91948816' N	120° 35.30605770' W
Incident Command Post		48° 28.85220168' N	120° 12.25605312' W
Repeater	CMD7	48° 37.92415314' N	120° 24.22408956' W
Repeater	CMD8	48° 31.87005528' N	120° 01.63658406' W

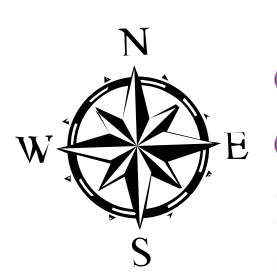
Cedar Creek
WA-OWF-000320

Cub Creek 2
WA-NES-000373

Fire Perimeter Acres as of 2021-07-18
Cedar Creek - 4,080
Delancy - 133
Cub Creek 2 - 4,690

Cedar Creek: 11% Contained
Delancy: 0% Contained
Cub Creek 2: 5% Contained

Map Updated: 7/18/2021 @ 2353



- Structures
- Drop Point
- Planned Dozer Line
- Closed FS Roads
- ⊕ Airstrip or Airport
- Lookout
- Other
- Decommissioned Roads
- ⊙ Helibase
- ◆ Repeater
- Trails
- ⊕ Helispot
- Completed Dozer Line
- Roadless Areas
- ⊕ Helibase
- Completed Hand Line
- Wilderness
- ⊕ Helibase
- Completed Road as Line
- Open FS Roads
- Airstrip or Airport

- ⊕ Dip Site
- ⊕ Helispot
- ⊕ Helibase
-) Division Break



- ⊕ Bridge
- ⊕ Fence - (
- ⊕ Repeater
- ⊕ Hazard

NORTHWEST INCIDENT MANAGEMENT TEAM

0 1 2 3 4 Miles