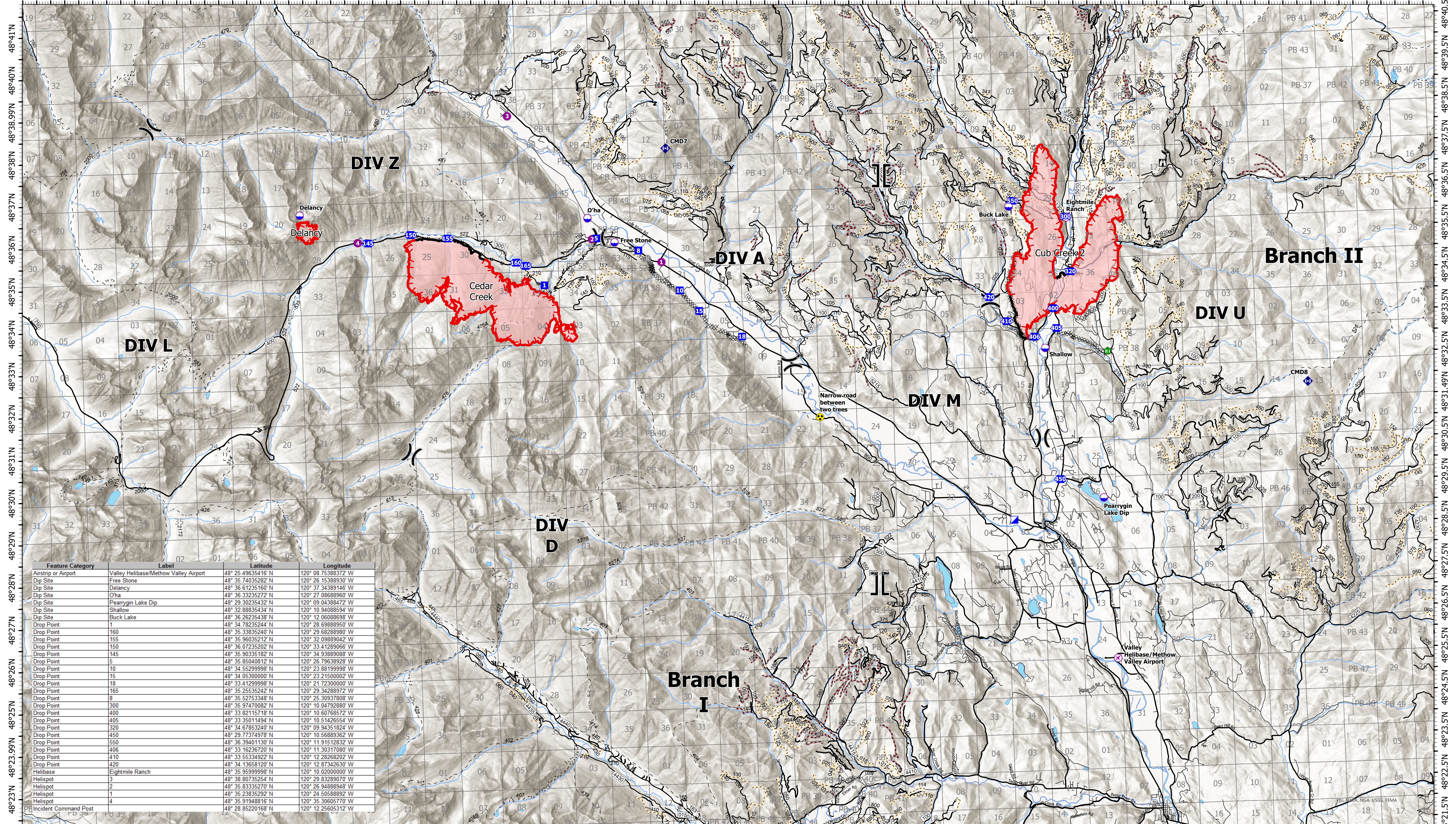


Medical

120°47'W 120°45.5'W 120°44'W 120°42.5'W 120°41'W 120°39.5'W 120°38'W 120°36.5'W 120°35'W 120°33.5'W 120°32'W 120°30.5'W 120°29'W 120°27.5'W 120°26'W 120°24.5'W 120°23'W 120°21.5'W 120°20'W 120°18.5'W 120°17'W 120°15.5'W 120°14'W 120°12.5'W 120°11'W 120°9.5'W 120°8'W 120°6.5'W 120°5'W 120°3.5'W 120°2'W 120°0.5'W 119°59'W 119°57.5'W



Feature Category	Label	Latitude	Longitude
Airstrip or Airport	Valley Helibase/Methow Valley Airport	48° 25.49635416 N	120° 08.75388372 W
Dip Site	Free Stone	48° 35.74035282 N	120° 26.15388930 W
Dip Site	Delancy	48° 36.61235160 N	120° 37.34389146 W
Dip Site	O'ha	48° 36.33235272 N	120° 27.08688960 W
Dip Site	Pearrygin Lake Dip	48° 29.30235432 N	120° 09.04388472 W
Dip Site	Shallow	48° 32.88835434 N	120° 10.94088594 W
Dip Site	Buck Lake	48° 36.26235438 N	120° 12.06088698 W
Drop Point	1	48° 34.78235244 N	120° 28.69888950 W
Drop Point	160	48° 35.33835240 N	120° 29.68288980 W
Drop Point	155	48° 35.96035212 N	120° 32.09889042 W
Drop Point	150	48° 36.07235202 N	120° 33.41289066 W
Drop Point	145	48° 35.90335182 N	120° 34.93889088 W
Drop Point	5	48° 35.85040812 N	120° 26.79638928 W
Drop Point	10	48° 34.55299998 N	120° 23.88199998 W
Drop Point	15	48° 34.05300000 N	120° 23.21500000 W
Drop Point	18	48° 33.41299998 N	120° 21.72300000 W
Drop Point	165	48° 35.25535242 N	120° 29.34288972 W
Drop Point	8	48° 35.52753348 N	120° 25.30937808 W
Drop Point	300	48° 35.97470082 N	120° 10.04792880 W
Drop Point	400	48° 33.82115718 N	120° 10.60768572 W
Drop Point	405	48° 33.35011494 N	120° 10.51426554 W
Drop Point	320	48° 34.67853240 N	120° 09.94351824 W
Drop Point	450	48° 29.77374978 N	120° 10.56889362 W
Drop Point	550	48° 36.39401130 N	120° 11.91512832 W
Drop Point	406	48° 33.16236720 N	120° 11.30317080 W
Drop Point	410	48° 33.55349222 N	120° 12.28268202 W
Drop Point	420	48° 34.13658120 N	120° 12.87342630 W
Helibase	Eightmile Ranch	48° 35.95999998 N	120° 10.02000000 W
Helispot	3	48° 38.80735254 N	120° 29.83289070 W
Helispot	2	48° 35.83335270 N	120° 26.94888948 W
Helispot	1	48° 35.23835292 N	120° 24.50588932 W
Helispot	4	48° 35.91948816 N	120° 35.30605770 W
Incident Command Post	ICD 300	48° 28.85220168 N	120° 12.25605312 W

120°47.5'W 120°46'W 120°44.5'W 120°43'W 120°41.5'W 120°40'W 120°38.5'W 120°37'W 120°35.5'W 120°34'W 120°32.5'W 120°31'W 120°29.5'W 120°28'W 120°26.5'W 120°25'W 120°23.5'W 120°22'W 120°20.5'W 120°19'W 120°17.5'W 120°16'W 120°14.5'W 120°13'W 120°11.5'W 120°10'W 120°8.5'W 120°7'W 120°5.5'W 120°4'W 120°2.5'W 120°1'W 120°0'W 119°58.5'W

Cedar Creek
WA-OWF-000320
Cub Creek 2
WA-NES-000373

Fire Perimeter Acres as of 2021-07-18
Cedar Creek - 4,080
Delancy - 133
Cub Creek 2 - 4,690

Cedar Creek: 11% Contained
Delancy: 0% Contained
Cub Creek 2: 5% Contained

Map Updated: 7/18/2021 @ 2314

- ✖ Completed Dozer Line
- ⋄ Completed Hand Line
- ⋄ Completed Road as Line
- ▬ Fire Edge
- ▬ Contained Line
- Highways
- Open FS Roads
- Closed FS Roads
- Decommissioned FS Roads
- Trails
- ✈ Airstrip or Airport
- ⊙ Dip Site
- ⊙ Helispot
- ⊙ Helibase
- ⎓ Division Break
- ⎓ Branch Break
- ⊙ Incident Command Post
- ⊙ Hazard

0 1 2 3 4 Miles