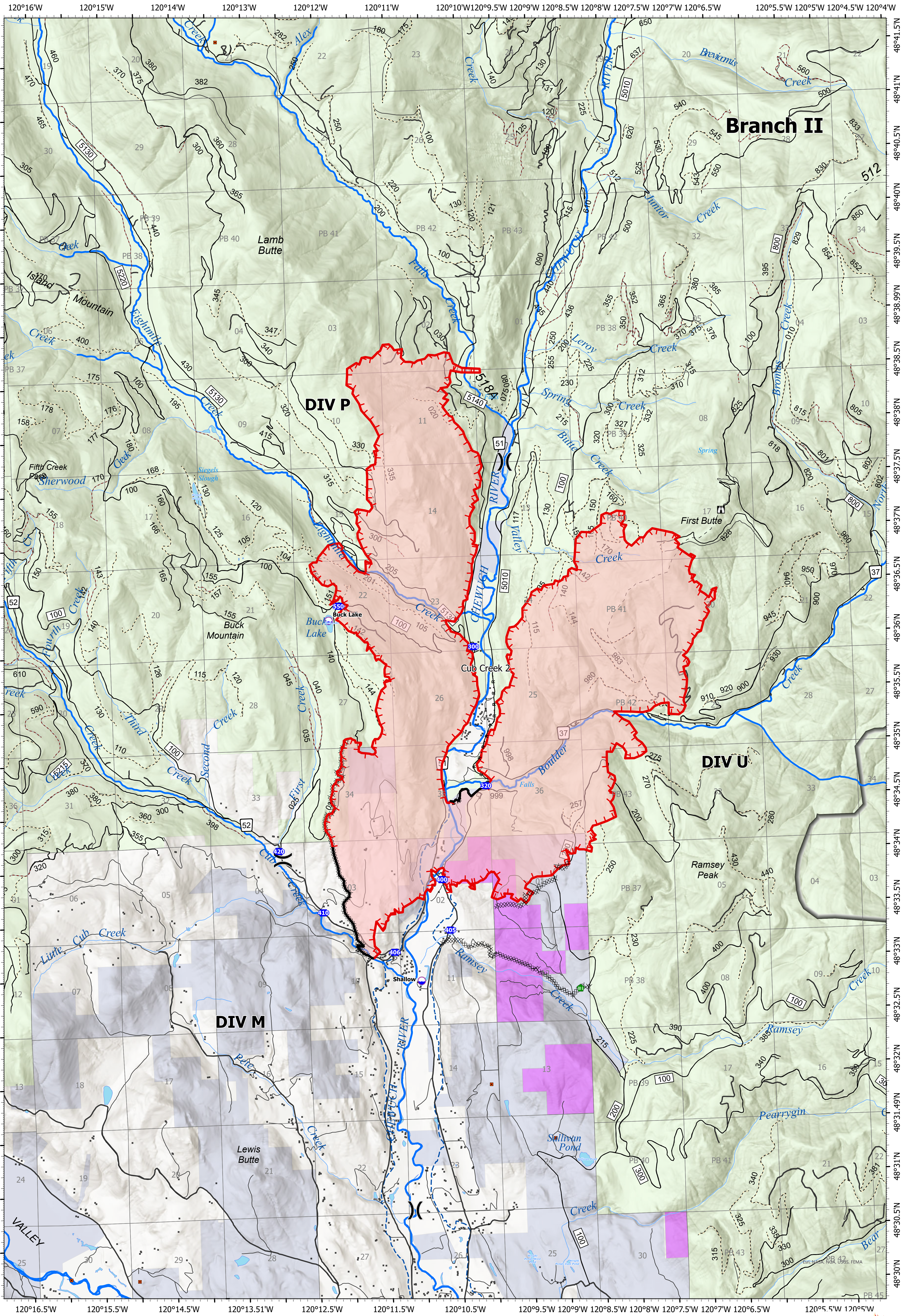


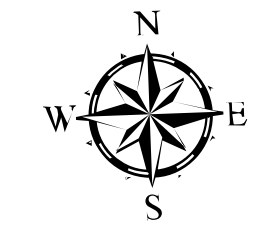
Operations



Cub Creek 2 WA-NES-000373

Fire Perimeter Acres as of 2021-07-19
Cub Creek - 8,255
Map Updated: 7/19/2021 @ 0429

Cedar Creek: 11% Contained
Delancy: 0% Contained
Cub Creek 2: 5% Contained



- | | | | | |
|------------------|--------------------------|---------------------------------|---------------------------|------------------------|
| ■ Structures | ● Fence - Cut/Damaged | ▬ Fire Edge | ■ Fish & Wildlife Service | ▬ Canal Ditch |
| ● Mines | ⊗ Campgrounds | ▬ Contained Line | ▬ Highways | ▬ Fish Bearing Streams |
| ● Dip Site | ⊗ Completed Dozer Line | ▬ U.S. Forest Service | ▬ Open FS Roads | ▬ Roadless Areas |
| ⊗ Division Break | ⊗ Completed Hand Line | ▬ State Land | ▬ Closed FS Roads | ▬ Highways |
| ■ Drop Point | ⊗ Completed Road as Line | ▬ Other Land, Including Private | ▬ Decommissioned Roads | ▬ Open FS Roads |
| ■ Lookout | | | | ▬ Closed FS Roads |

