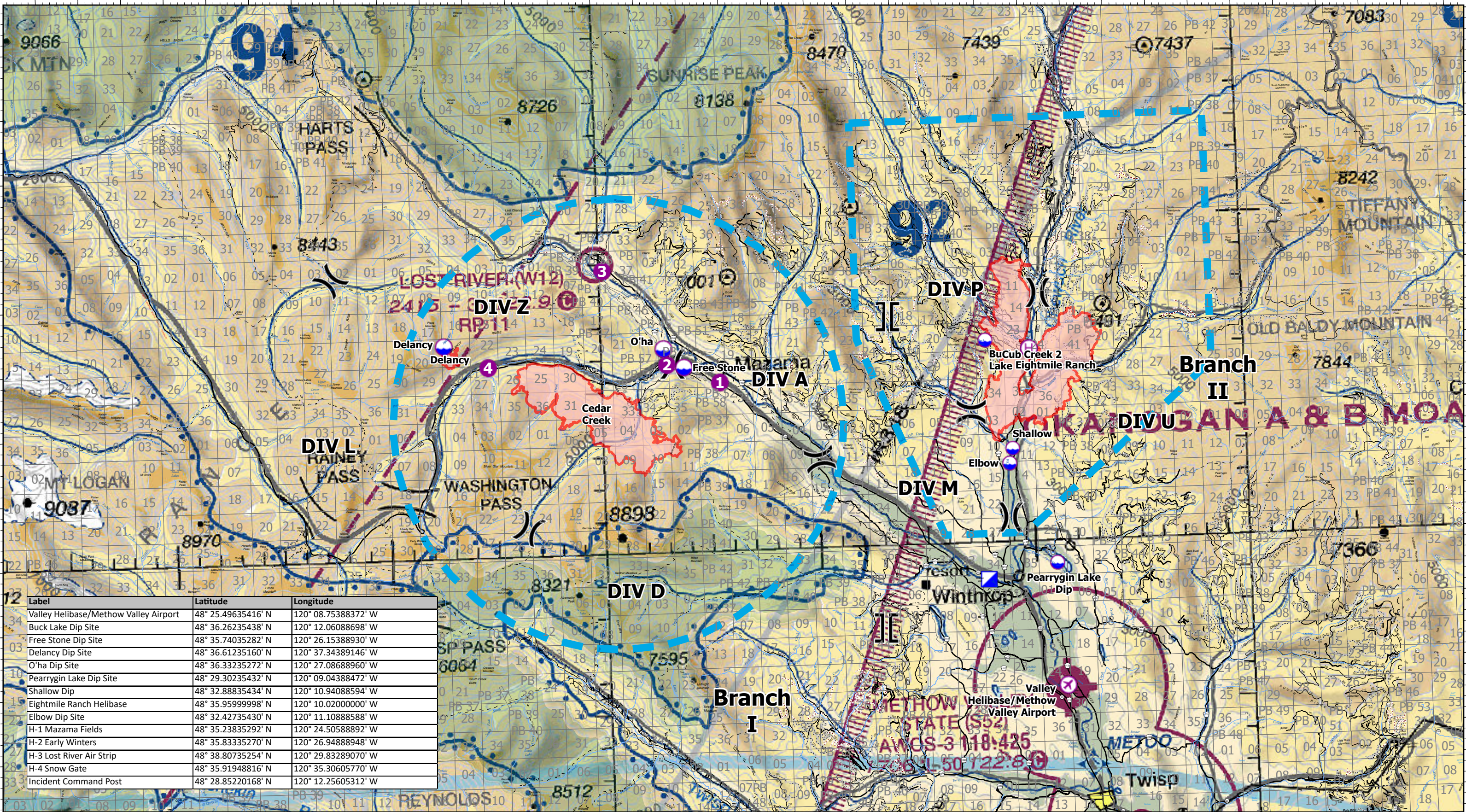


# Pilot

120°56'W 120°54'W 120°52'W 120°50'W 120°48'W 120°46'W 120°44'W 120°42'W 120°40'W 120°38'W 120°36'W 120°34'W 120°32'W 120°30'W 120°28'W 120°26'W 120°24'W 120°22'W 120°20'W 120°18'W 120°16'W 120°14'W 120°12'W 120°10'W 120°8'W 120°6'W 120°4'W 120°2'W 120°W 119°58'W 119°56'W 119°54'W 119°52'W 119°50'W



Label	Latitude	Longitude
Valley Helibase/Methow Valley Airport	48° 25.49635416' N	120° 08.75388372' W
Buck Lake Dip Site	48° 36.26235438' N	120° 12.06088698' W
Free Stone Dip Site	48° 35.74035282' N	120° 26.15388930' W
Delancy Dip Site	48° 36.61235160' N	120° 37.34389146' W
O'ha Dip Site	48° 36.33235272' N	120° 27.08688960' W
Pearrygin Lake Dip Site	48° 29.30235432' N	120° 09.04388472' W
Shallow Dip	48° 32.88835434' N	120° 10.94088594' W
Eightmile Ranch Helibase	48° 35.95999998' N	120° 10.02000000' W
Elbow Dip Site	48° 32.42735430' N	120° 11.10888588' W
H-1 Mazama Fields	48° 35.23835292' N	120° 24.50588892' W
H-2 Early Winters	48° 35.83335270' N	120° 26.94888948' W
H-3 Lost River Air Strip	48° 38.80735254' N	120° 29.83289070' W
H-4 Snow Gate	48° 35.91948816' N	120° 35.30605770' W
Incident Command Post	48° 28.85220168' N	120° 12.25605312' W

**Cedar Creek**  
WA-OWF-000320

**Cub Creek 2**  
WA-NES-000373

Fire Perimeter Acres as of  
2021-07-19

Cedar Creek - 5,945  
Cub Creek 2 - 8,255  
Delancy - 154

Map Updated: 7/19/2021 @ 1233



- Airstrip or Airport
- ⊙ Helibase
- ▣ Incident Command Post
- Open FS Roads
- Wilderness
- Dip Site
- x Division Break
- - - Trails
- - - Closed FS Roads
- Helispot
- ⊥ Branch Break
- Highways
- - - Road Core Decom



0 1 2 3 4 Miles