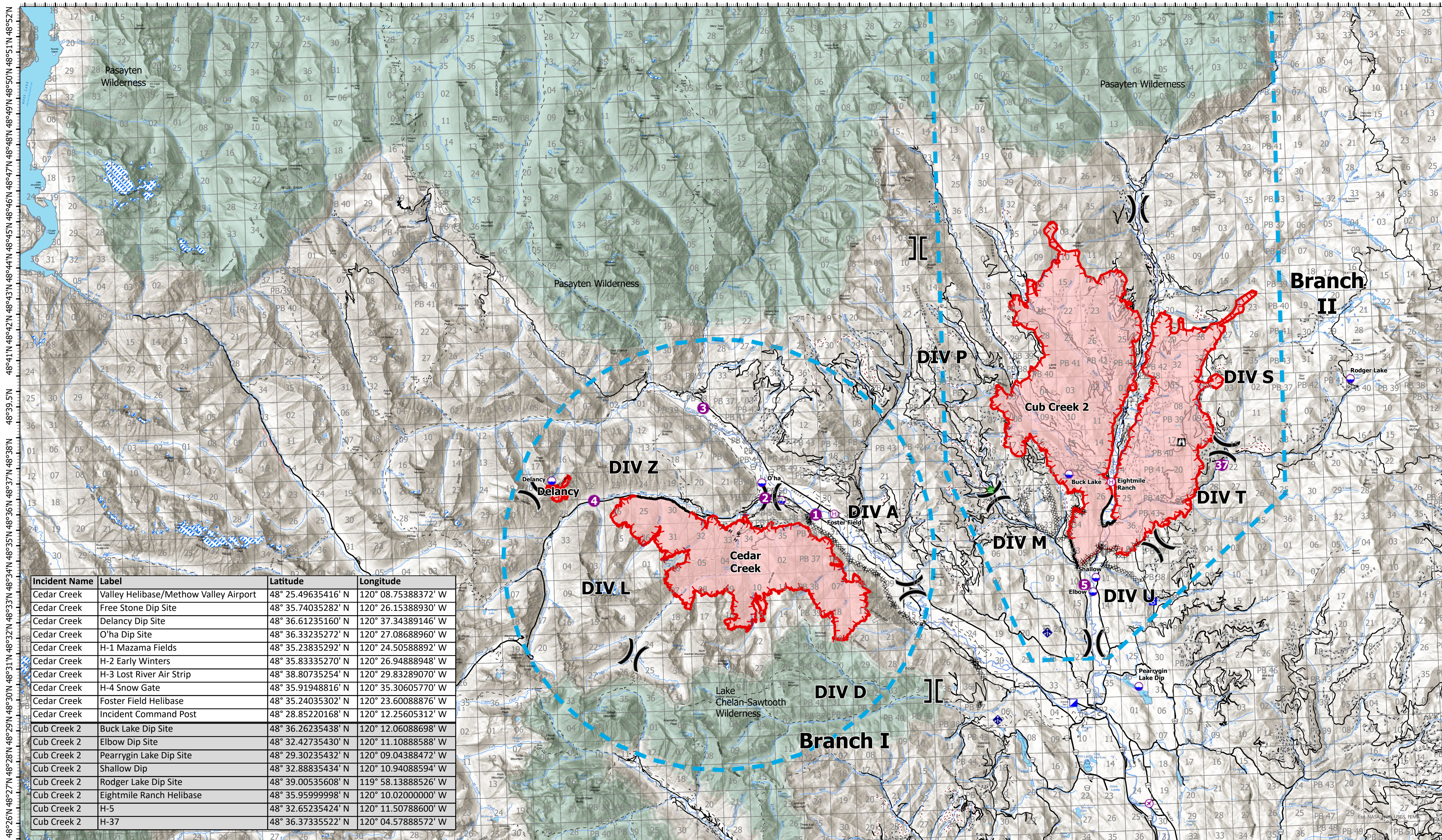


# Air Operations

121°2.5'W 121°0.5'W 120°58'W 120°56'W 120°54'W 120°52'W 120°50'W 120°48'W 120°46'W 120°44'W 120°42'W 120°40'W 120°38'W 120°36'W 120°34'W 120°32'W 120°30'W 120°28'W 120°26'W 120°24'W 120°22'W 120°20'W 120°18'W 120°16'W 120°14'W 120°12'W 120°10'W 120°8'W 120°6.01'W 120°4'W 120°2'W 120°W 119°58'W 119°56'W 119°54'W



Incident Name	Label	Latitude	Longitude
Cedar Creek	Valley Helibase/Methow Valley Airport	48° 25.49635416' N	120° 08.75388372' W
Cedar Creek	Free Stone Dip Site	48° 35.74035282' N	120° 26.15388930' W
Cedar Creek	Delancy Dip Site	48° 36.61235160' N	120° 37.34389146' W
Cedar Creek	O'ha Dip Site	48° 36.33235272' N	120° 27.08688960' W
Cedar Creek	H-1 Mazama Fields	48° 35.23835292' N	120° 24.50588892' W
Cedar Creek	H-2 Early Winters	48° 35.83335270' N	120° 26.94888948' W
Cedar Creek	H-3 Lost River Air Strip	48° 38.80735254' N	120° 29.83289070' W
Cedar Creek	H-4 Snow Gate	48° 35.91948816' N	120° 35.30605770' W
Cedar Creek	Foster Field Helibase	48° 35.24035302' N	120° 23.60088876' W
Cedar Creek	Incident Command Post	48° 28.85220168' N	120° 12.25605312' W
Cub Creek 2	Buck Lake Dip Site	48° 36.26235438' N	120° 12.06088698' W
Cub Creek 2	Elbow Dip Site	48° 32.42735430' N	120° 11.10888588' W
Cub Creek 2	Pearrygin Lake Dip Site	48° 29.30235432' N	120° 09.04388472' W
Cub Creek 2	Shallow Dip	48° 32.88835434' N	120° 10.94088594' W
Cub Creek 2	Rodger Lake Dip Site	48° 39.00535608' N	119° 58.13888526' W
Cub Creek 2	Eightmile Ranch Helibase	48° 35.95999998' N	120° 10.02000000' W
Cub Creek 2	H-5	48° 32.65235424' N	120° 11.50788600' W
Cub Creek 2	H-37	48° 36.37335522' N	120° 04.57888572' W

121°3.5'W 121°1.5'W 120°59.5'W 120°57'W 120°55'W 120°53'W 120°50.5'W 120°48'W 120°46'W 120°44'W 120°42'W 120°40'W 120°38'W 120°36'W 120°34'W 120°32'W 120°30'W 120°28'W 120°26'W 120°24'W 120°22'W 120°20'W 120°18'W 120°16'W 120°14'W 120°12'W 120°10'W 120°8'W 120°6.01'W 120°4'W 120°2'W 120°W 119°58'W 119°56'W 119°54'W

## Cedar Creek WA-OWF-000320 Cub Creek 2 WA-NES-000373

Fire Perimeter Acres as of  
2021-07-21  
Cedar Creek - 14,857  
Cub Creek 2 - 35,134  
Delancy - 219



Map Updated: 7/21/2021 @ 1956

- Airstrip or Airport
- Dip Site
- Helispot
- Helibase
- Division Break
- Branch Break
- Incident Command Post
- Lookout
- Completed Dozer Line
- Completed Hand Line
- Completed Road as Line
- Temporary Flight Restriction
- Fire Edge
- Contained Line
- Trails
- Highways
- Open FS Roads
- Closed FS Roads
- Road Core Decom
- Wilderness



0 1 2 3 4 Miles