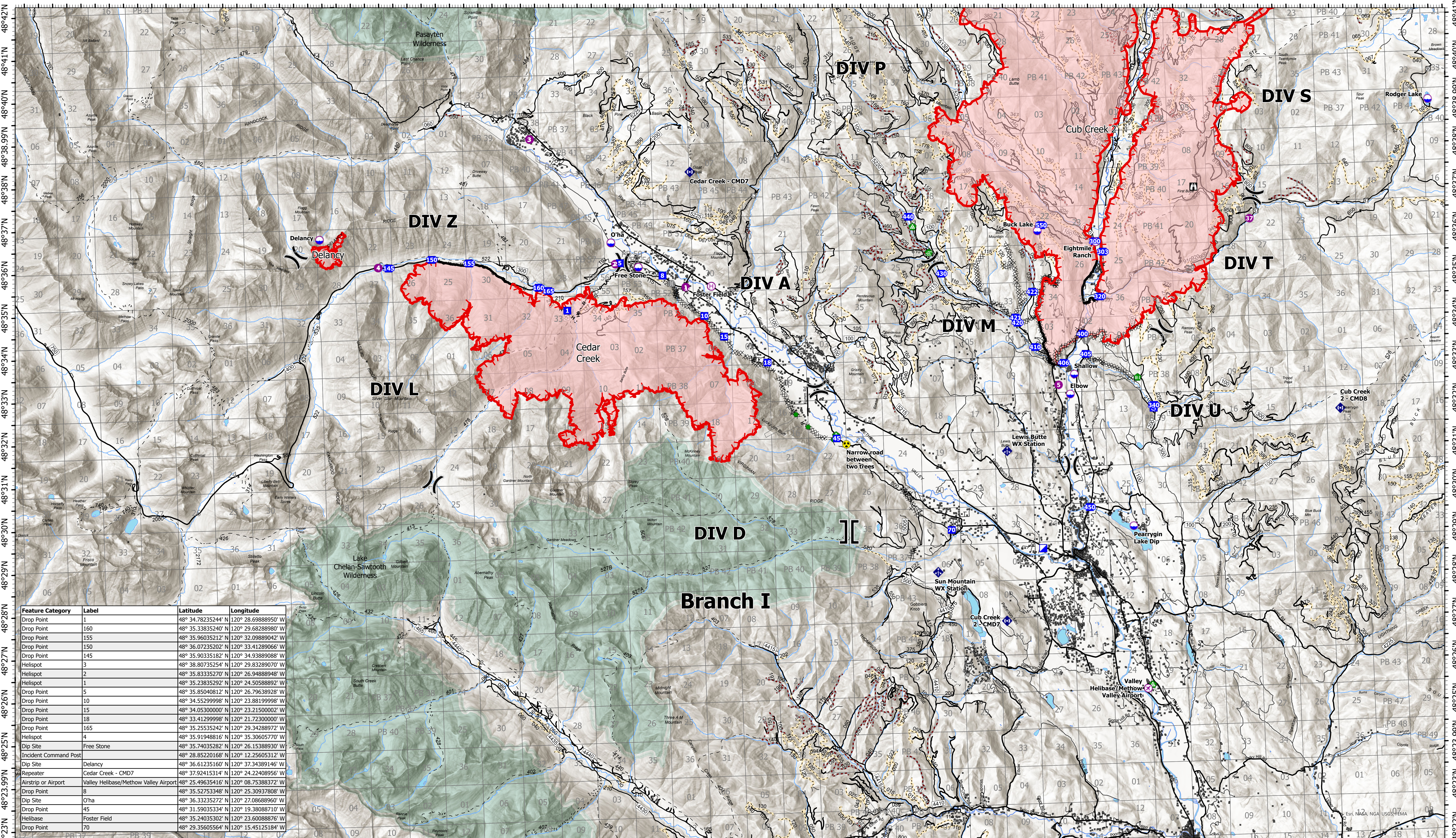


Communication

120°47.5'W 120°46'W 120°44.5'W 120°43'W 120°41.5'W 120°40'W 120°38.5'W 120°37'W 120°35.5'W 120°34'W 120°32.5'W 120°31'W 120°29.5'W 120°28'W 120°26.5'W 120°25'W 120°23.5'W 120°22'W 120°20.5'W 120°19'W 120°17.5'W 120°16'W 120°14.5'W 120°13'W 120°11.5'W 120°10'W 120°8.5'W 120°7'W 120°5.5'W 120°4'W 120°2.5'W 120°1'W 120°W 119°58.5'W



Feature Category	Label	Latitude	Longitude
Drop Point	1	48° 34.78235244' N	120° 28.69888950' W
Drop Point	160	48° 35.33835240' N	120° 29.68288980' W
Drop Point	155	48° 35.96035212' N	120° 32.09889042' W
Drop Point	150	48° 36.07235202' N	120° 33.41289066' W
Drop Point	145	48° 35.90335182' N	120° 34.93889088' W
Helispot	3	48° 38.80735254' N	120° 29.83289070' W
Helispot	2	48° 35.83335270' N	120° 26.94888948' W
Helispot	1	48° 35.23835292' N	120° 24.50588892' W
Drop Point	5	48° 35.85040812' N	120° 26.79638928' W
Drop Point	10	48° 34.55299998' N	120° 23.88199998' W
Drop Point	15	48° 34.05300000' N	120° 23.21500002' W
Drop Point	18	48° 33.41299998' N	120° 21.72300000' W
Drop Point	165	48° 35.25535242' N	120° 29.34288972' W
Helispot	4	48° 35.91948816' N	120° 35.30605770' W
Dip Site	Free Stone	48° 35.74035282' N	120° 26.15388930' W
Incident Command Post		48° 28.8520168' N	120° 12.25605312' W
Dip Site	Delancy	48° 36.61235160' N	120° 37.34389146' W
Repeater	Cedar Creek - CMD7	48° 37.92415314' N	120° 24.22408956' W
Airstrip or Airport	Valley Helibase/Methow Valley Airport	48° 25.49635416' N	120° 08.75388372' W
Drop Point	8	48° 35.52753348' N	120° 25.30937808' W
Dip Site	O'ha	48° 36.33235272' N	120° 27.08688960' W
Drop Point	45	48° 31.59035334' N	120° 19.38088710' W
Helibase	Foster Field	48° 35.24035302' N	120° 23.60088876' W
Drop Point	70	48° 29.35605564' N	120° 15.45125184' W

Cedar Creek
WA-OWF-000320
Cub Creek 2
WA-NES-000373

Fire Perimeter Acres as of 2021-07-21
Cedar Creek - 14,857
Delancy - 219
Cub Creek 2 - 35,134

Map Updated: 7/21/2021 @ 2246

Cedar Creek: 11% Contained
Delancy: 0% Contained
Cub Creek 2: 5% Contained

- Structures
- ✈ Airstrip or Airport
- ⊕ Helibase
- ⊗ Division Break
- ⊕ Branch Break
- 📍 Incident Command Post
- 📍 Drop Point
- 📍 Staging Area
- 📍 Lookout
- 📍 Value at Risk
- 🌊 Water Development or Draft Site
- 🌱 Repair Point
- 📶 Mobile Weather Unit
- 📶 Repeater
- ⚡ Completed Dozer Line
- Completed Hand Line
- Completed Road as Line
- ⚡ Planned Dozer Line
- Planned Road as Line
- Other
- 🔥 Fire Edge
- Contained Line
- Trails
- Wilderness
- DNR_Roads_Clip
- Trails
- Highways
- Open FS Roads
- Closed FS Roads
- RoadCoreDecom_R06_EDW

