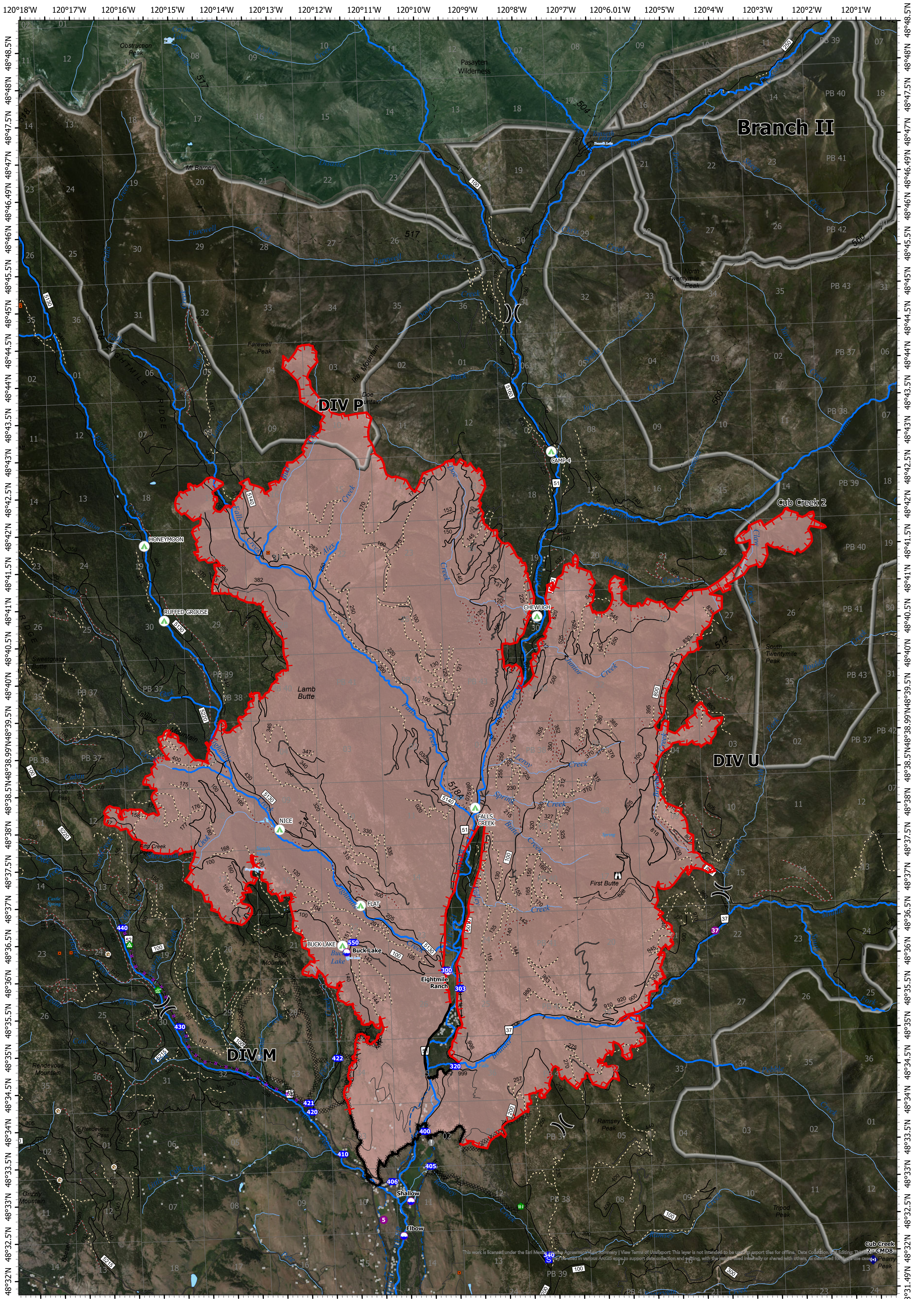
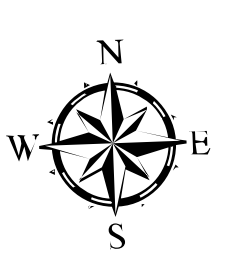


Operations



Cub Creek 2

WA-NES-000373
 Fire Perimeter Acres as of 2021-07-22
 Cub Creek - 38,671
 Map Updated: 7/22/2021 @ 0547
 Cub Creek 2: 5% Contained



- | | | | | |
|--------------|-----------------------------------|------------------------|--------------------------|------------------------|
| ■ Structures | ⌘ Division Break | 🏠 Landing or Log Deck | — Completed Road as Line | — Decommissioned Roads |
| ⬛ Mines | 📍 Drop Point | 🚧 Fence - Cut/Damaged | — Planned Hand Line | — Canal Ditch |
| 🏠 Ski Huts | 📍 Staging Area | 🔁 Repeater | — Planned Road as Line | ⬛ Roadless Areas |
| 📍 Dip Site | 📍 Lookout | 🏕 Campgrounds | 🔴 Fire Edge | 🌿 Wilderness |
| 📍 Helispot | 📍 Value at Risk | ⌘ Completed Dozer Line | — Contained Line | |
| 📍 Helibase | 📍 Water Development or Draft Site | — Completed Hand Line | — Fish Bearing Streams | |

