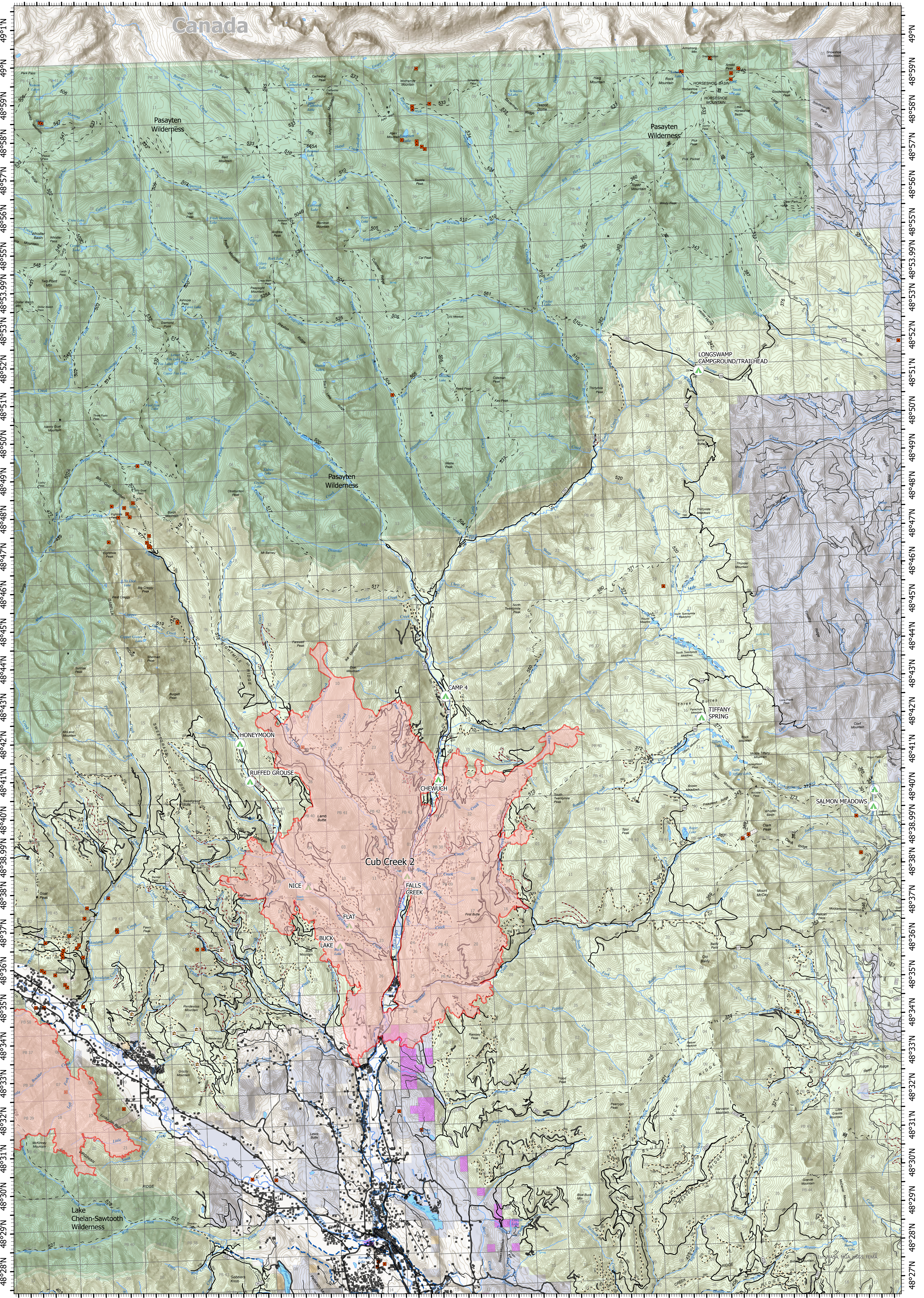


Operations

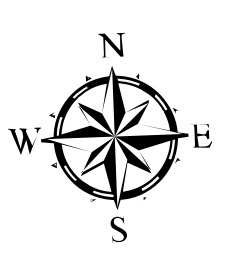
120°23.5'W 120°21.5'W 120°19.5'W 120°17.5'W 120°15.5'W 120°13.5'W 120°11.5'W 120°9.5'W 120°8'W 120°6.5'W 120°5'W 120°3.5'W 120°2'W 120°0.5'W 119°59'W 119°57'W 119°55'W 119°53'W 119°51.01'W 119°49'W



120°25.5'W 120°23.5'W 120°21.5'W 120°19.5'W 120°17.5'W 120°15.5'W 120°13.5'W 120°11.5'W 120°9.5'W 120°8'W 120°6.5'W 120°5'W 120°3.5'W 120°2'W 120°0.5'W 119°59'W 119°57'W 119°55'W 119°53'W 119°51.01'W

Cub Creek 2 WA-NES-000373

Fire Perimeter Acres as of 2021-07-22
Cub Creek - 38,671
Map Updated: 7/22/2021 @ 0553
Cub Creek 2: 5% Contained



- Structures
- Mines
- Ski Huts
- Campgrounds
- U.S. Forest Service
- Bureau of Land Management
- State Land
- Other Land, Including Private
- Fish & Wildlife Service
- Decommissioned Roads
- Canal Ditch
- Wilderness

0 0.75 1.5 3 Miles

