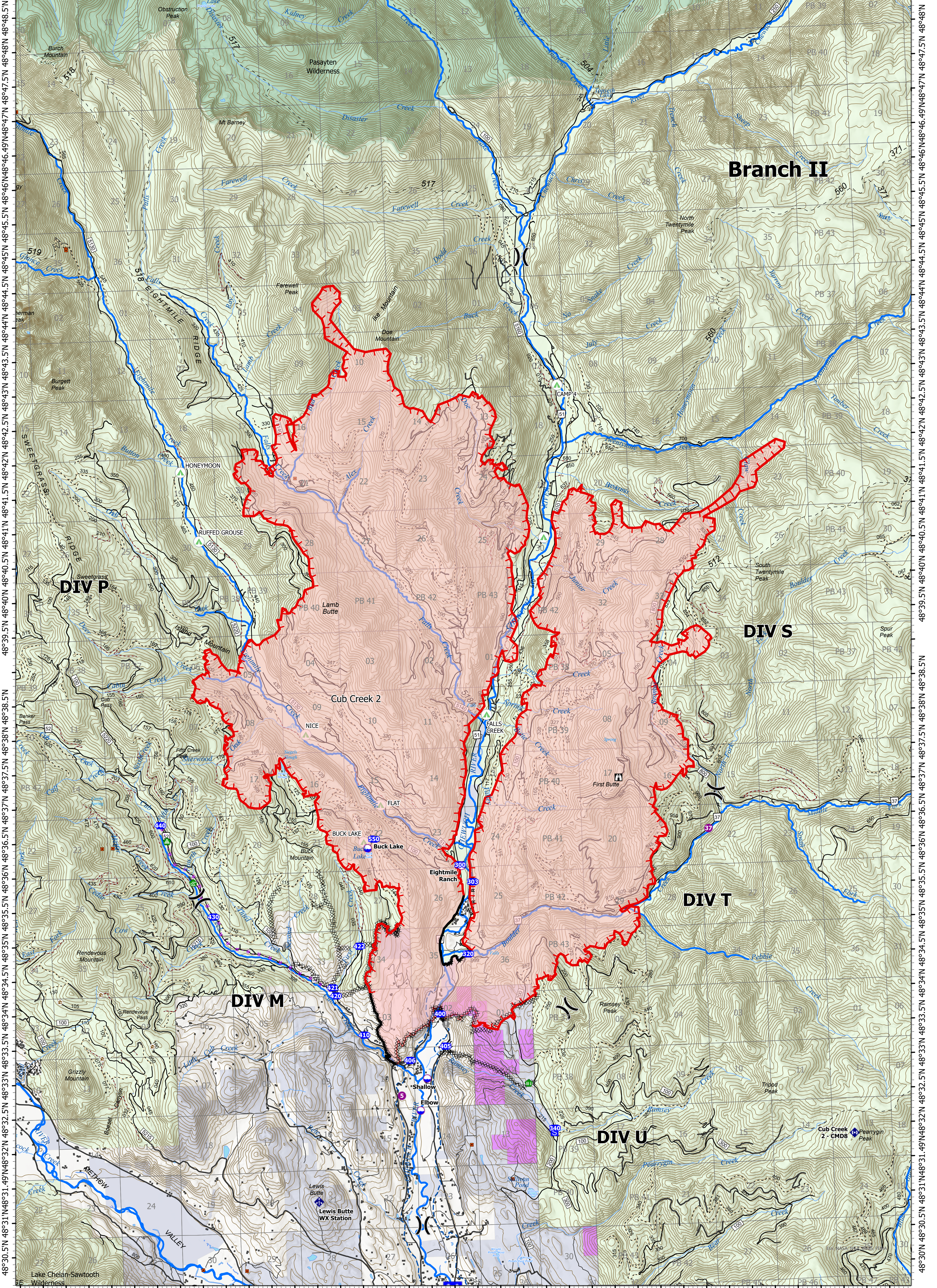


Operations

120°19'W 120°18'W 120°17'W 120°16'W 120°15'W 120°14'W 120°13'W 120°12'W 120°11'W 120°10'W 120°9'W 120°8'W 120°7'W 120°6.01'W 120°5'W 120°4'W 120°3'W 120°2'W 120°1'W 120°W



Cub Creek 2
WA-NES-000373
 Fire Perimeter Acres as of 2021-07-21
 Cub Creek 2 - 35,134
 Map Updated: 7/21/2021 @ 2224
 Cub Creek 2: 5% Contained

- | | | | | | |
|--------------|-----------------------------------|-----------------------|--------------------------|---------------------------------|------------------------|
| ■ Structures | ⌵ Division Break | 🌲 Landing or Log Deck | ⌘ Completed Dozer Line | — Contained Line | — Decommissioned Roads |
| ⬛ Mines | ⬛ Drop Point | 🚧 Fence - Cut/Damaged | ⌘ Completed Hand Line | — Fish Bearing Streams | — Canal Ditch |
| 🏠 Ski Huts | 🏠 Staging Area | 📶 Mobile Weather Unit | ⌘ Completed Road as Line | — U.S. Forest Service | — Wilderness |
| 📍 Dip Site | 🏠 Lookout | 📶 Repeater | ⌘ Planned Hand Line | — State Land | |
| 📶 Helispot | 📶 Value at Risk | 🚧 Road Closure | ⌘ Planned Road as Line | — Other Land, Including Private | |
| 📶 Helibase | 🌲 Water Development or Draft Site | 🏠 Campgrounds | 🔴 Fire Edge | — Fish & Wildlife Service | |

0 0.5 1 2 Miles