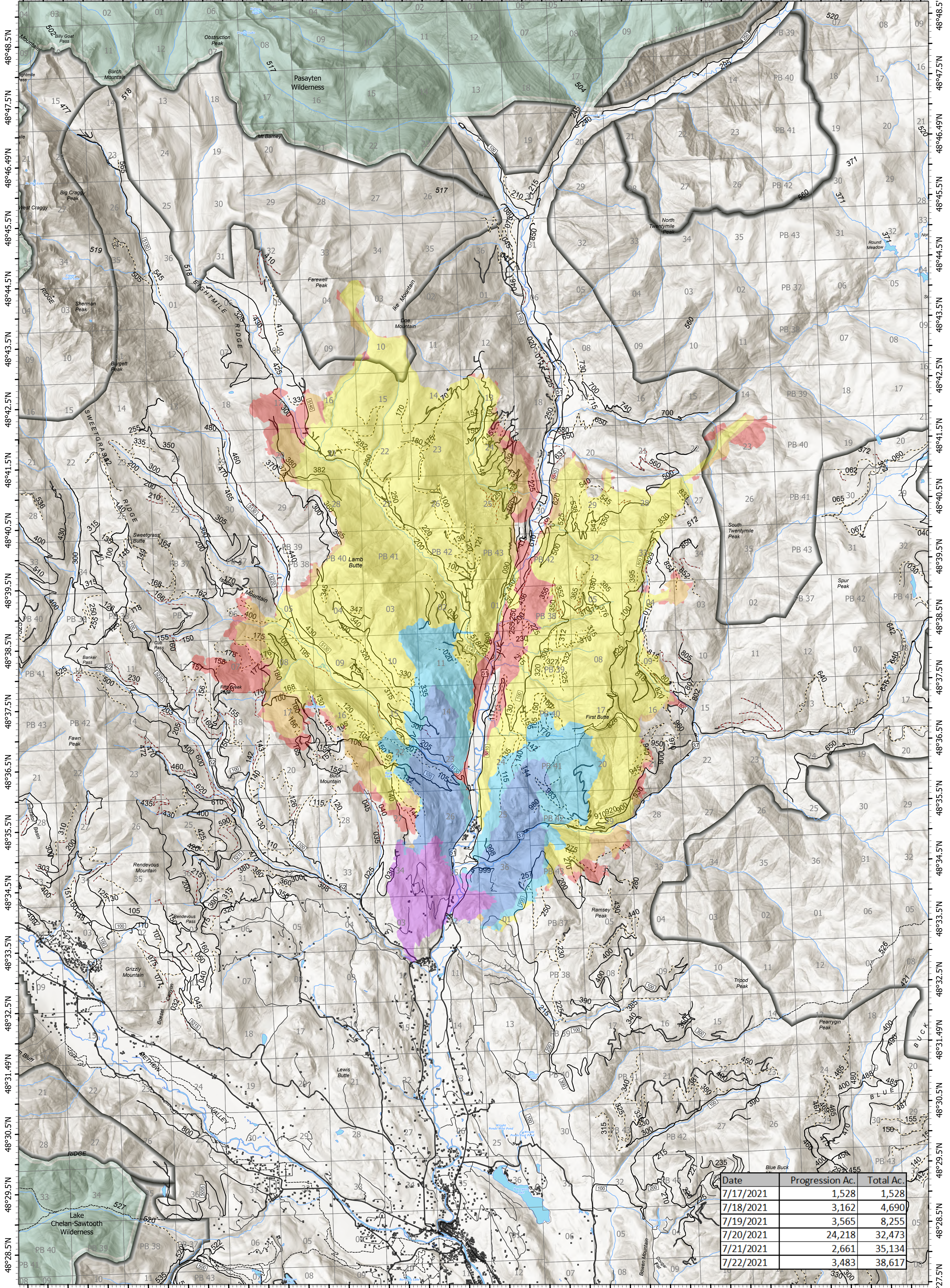


Fire Progression

120°20.5'W 120°19'W 120°18'W 120°17'W 120°16'W 120°15'W 120°14'W 120°13'W 120°12'W 120°11'W 120°10'W 120°9'W 120°8'W 120°7'W 120°6.01'W 120°5'W 120°4'W 120°3'W 120°2'W 120°1'W 120°W 119°59'W 119°58'W



Date	Progression Ac.	Total Ac.
7/17/2021	1,528	1,528
7/18/2021	3,162	4,690
7/19/2021	3,565	8,255
7/20/2021	24,218	32,473
7/21/2021	2,661	35,134
7/22/2021	3,483	38,617

120°21.5'W 120°20'W 120°19'W 120°18'W 120°17'W 120°16'W 120°15'W 120°14'W 120°13'W 120°12'W 120°11'W 120°10'W 120°9'W 120°8'W 120°7'W 120°6.01'W 120°5'W 120°4'W 120°3'W 120°2'W 120°1'W 120°W

Cub Creek 2

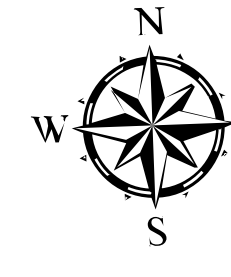
WA-NES-000373

Fire Perimeter Acres as of 2021-07-21

Cub Creek 2 - 35,134

0 0.5 1 2 Miles

Map Updated: 7/22/2021 @ 0731



- Structures
- Highways
- Open FS Roads
- Closed FS Roads
- Decommissioned Roads
- Trails
- Roadless Areas
- Wilderness
- 7/17/2021
- 7/18/2021
- 7/19/2021
- 7/20/2021
- 7/21/2021
- 7/22/2021

