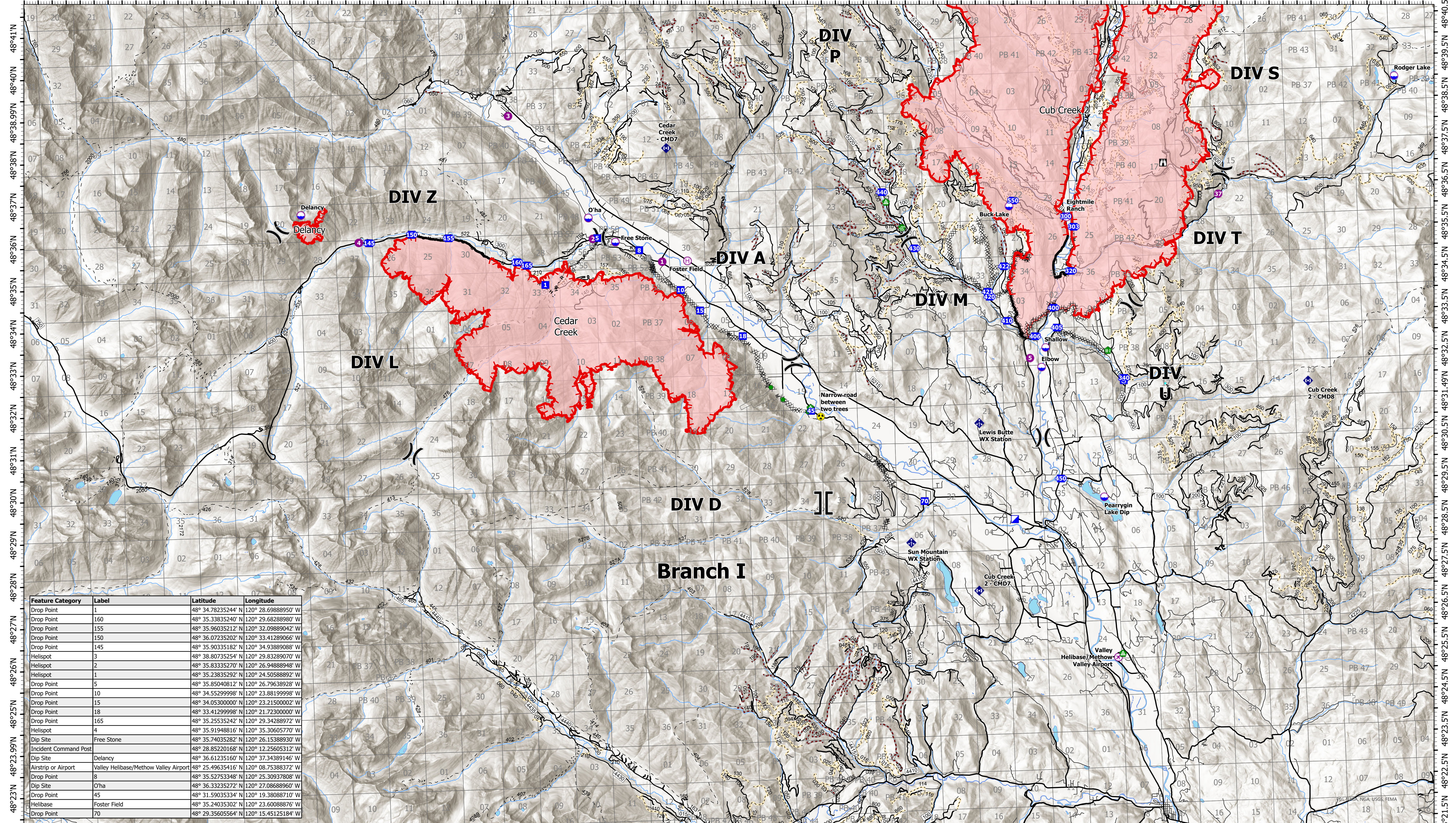


# Medical

120°47'W 120°45.5'W 120°44'W 120°42.5'W 120°41'W 120°39.5'W 120°38'W 120°36.5'W 120°35'W 120°33.5'W 120°32'W 120°30.5'W 120°29'W 120°27.5'W 120°26'W 120°24.5'W 120°23'W 120°21.5'W 120°20'W 120°18.5'W 120°17'W 120°15.5'W 120°14'W 120°12.5'W 120°11'W 120°9.5'W 120°8'W 120°6.5'W 120°5'W 120°3.5'W 120°2'W 120°0.5'W 119°59'W 119°57.5'W



Feature Category	Label	Latitude	Longitude
Drop Point	1	48° 34.78235244' N	120° 28.69888950' W
Drop Point	160	48° 35.33835240' N	120° 29.68288980' W
Drop Point	155	48° 35.96035212' N	120° 32.09889042' W
Drop Point	150	48° 36.07235202' N	120° 33.41289066' W
Drop Point	145	48° 35.90335182' N	120° 34.93889088' W
Helispot	3	48° 38.80735254' N	120° 29.83289070' W
Helispot	2	48° 35.83335270' N	120° 26.94888948' W
Helispot	1	48° 35.23835292' N	120° 24.50588892' W
Drop Point	5	48° 35.85040812' N	120° 26.79638928' W
Drop Point	10	48° 34.55299998' N	120° 23.88199998' W
Drop Point	15	48° 34.05300000' N	120° 23.21500000' W
Drop Point	18	48° 33.41299998' N	120° 21.72300000' W
Drop Point	165	48° 35.25535242' N	120° 29.34288972' W
Helispot	4	48° 35.91948816' N	120° 35.30605770' W
Dip Site	Free Stone	48° 35.74035282' N	120° 26.15388930' W
Incident Command Post		48° 28.85220168' N	120° 12.25605312' W
Dip Site	Delancy	48° 36.61235160' N	120° 37.34389146' W
Airstrip or Airport	Valley Helibase/Methow Valley Airport	48° 25.49635416' N	120° 08.75388372' W
Drop Point	8	48° 35.52753348' N	120° 25.30937808' W
Dip Site	O'ha	48° 36.33235272' N	120° 27.08688960' W
Drop Point	45	48° 31.59035334' N	120° 19.38088710' W
Helibase	Foster Field	48° 35.24035302' N	120° 23.60088876' W
Drop Point	70	48° 29.35605564' N	120° 15.45125184' W

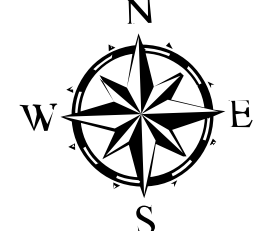
120°47.5'W 120°46'W 120°44.5'W 120°43'W 120°41.5'W 120°40'W 120°38.5'W 120°37'W 120°35.5'W 120°34'W 120°32.5'W 120°31'W 120°29.5'W 120°28'W 120°26.5'W 120°25'W 120°23.5'W 120°22'W 120°20.5'W 120°19'W 120°17.5'W 120°16'W 120°14.5'W 120°13'W 120°11.5'W 120°10'W 120°8.5'W 120°7'W 120°5.5'W 120°4'W 120°2.5'W 120°1'W 120°0'W 119°58.5'W

**Cedar Creek**  
WA-OWF-000320  
**Cub Creek 2**  
WA-NES-000373

Fire Perimeter Acres as of 2021-07-21  
Cedar Creek - 14,857  
Delancy - 219  
Cub Creek 2 - 35,134

Cedar Creek: 11% Contained  
Delancy: 11% Contained  
Cub Creek 2: 5% Contained

Map Updated: 7/21/2021 @ 2250



- Airstrip or Airport
- Dip Site
- Helispot
- Helibase
- Division Break
- Branch Break
- Incident Command Post

- Drop Point
- Staging Area
- Lookout
- Value at Risk
- Bridge
- Water Development or Draft Site
- Repair Point
- Landing or Log Deck
- Fence - Cut/Damaged
- Mobile Weather Unit

- Repeater
- Hazard
- Completed Dozer Line
- Completed Hand Line
- Completed Road as Line

- Contained Line
- Highways
- Open FS Roads
- Closed FS Roads
- Decommissioned FS Roads
- Trails



0 1 2 3 4 Miles

