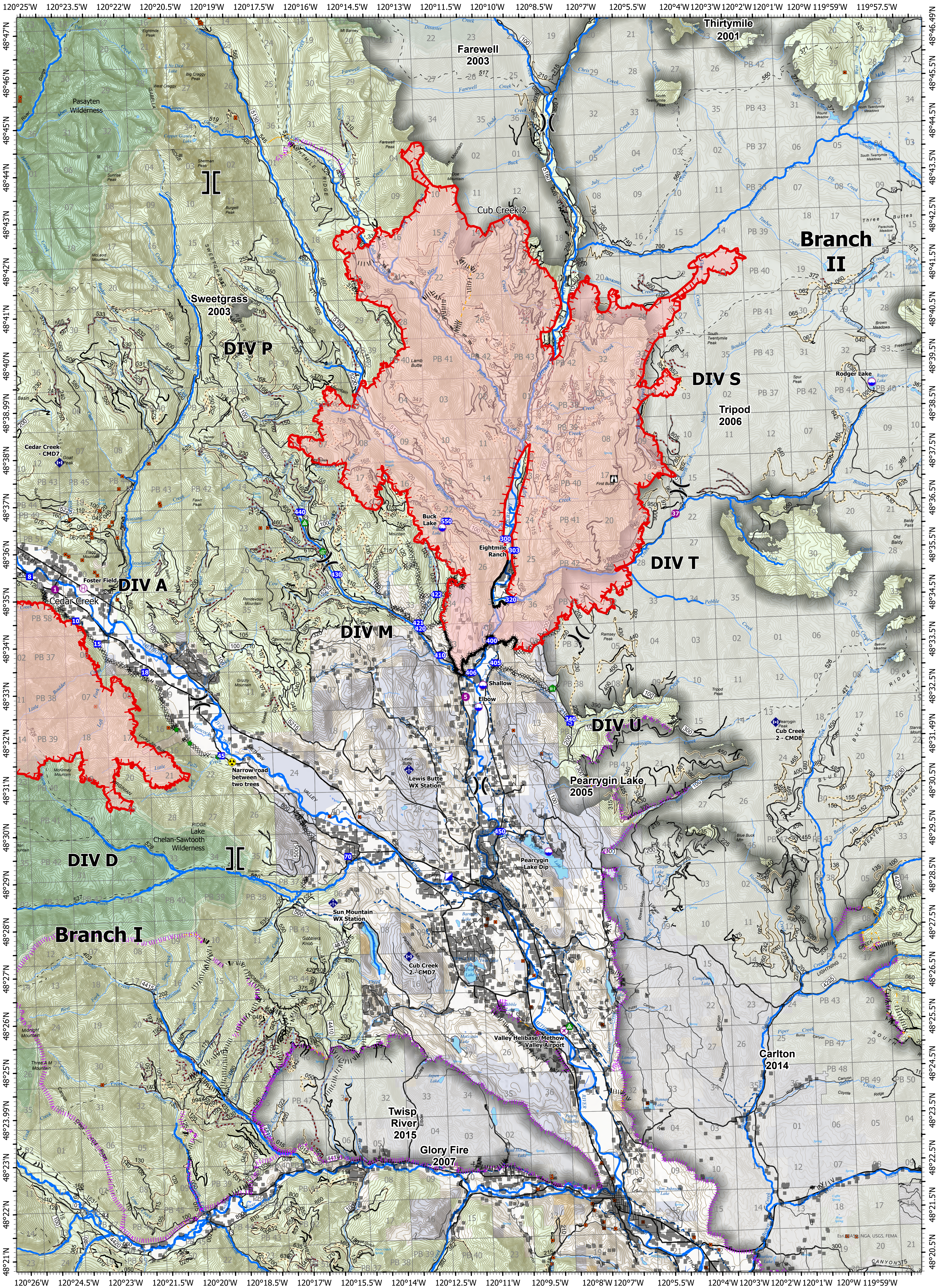
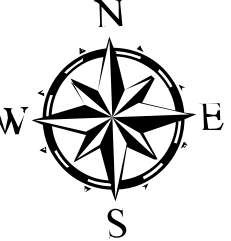


# Operations, Historical Fire Lines



## Cub Creek 2 WA-NES-000373

Fire Perimeter Acres as of  
Cub Creek 2 - 18,634



Map Updated: 7/22/2021 @ 1103

- |                         |                                   |                           |                                   |
|-------------------------|-----------------------------------|---------------------------|-----------------------------------|
| ■ Structures            | Ⓜ Lookout                         | Ⓜ Completed Hand Line     | 🌲 Wilderness                      |
| Ⓜ Mines                 | Ⓜ Value at Risk                   | Ⓜ Completed Road as Line  | 🌲 U.S. Forest Service             |
| ✈ Airstrip or Airport   | Ⓜ Bridge                          | 🔴 Fire Edge               | 🏠 Bureau of Land Management       |
| 📍 Dip Site              | 🌳 Water Development or Draft Site | — Contained Line          | 🏠 State Land                      |
| 🚁 Helispot              | 🔧 Repair Point                    | — Canal Ditch             | 🏠 Other Land, Including Private   |
| Ⓜ Helibase              | 🚚 Landing or Log Deck             | 🐟 Fish Bearing Streams    | 🏠 Historical Fires                |
| Ⓜ Division Break        | 🚧 Fence - Cut/Damaged             | — Highways                | 🔴 Past Hand Line                  |
| Ⓜ Branch Break          | 📡 Mobile Weather Unit             | — Open FS Roads           | 🔴 Past Completed Dozer Line (UNK) |
| Ⓜ Incident Command Post | 📡 Repeater                        | — Closed FS Roads         | 🔴 Past Completed Line             |
| 📍 Drop Point            | ⚠ Hazard                          | — Decommissioned FS Roads |                                   |
| 📍 Staging Area          | 🔴 Completed Dozer Line            | — Trails                  |                                   |

