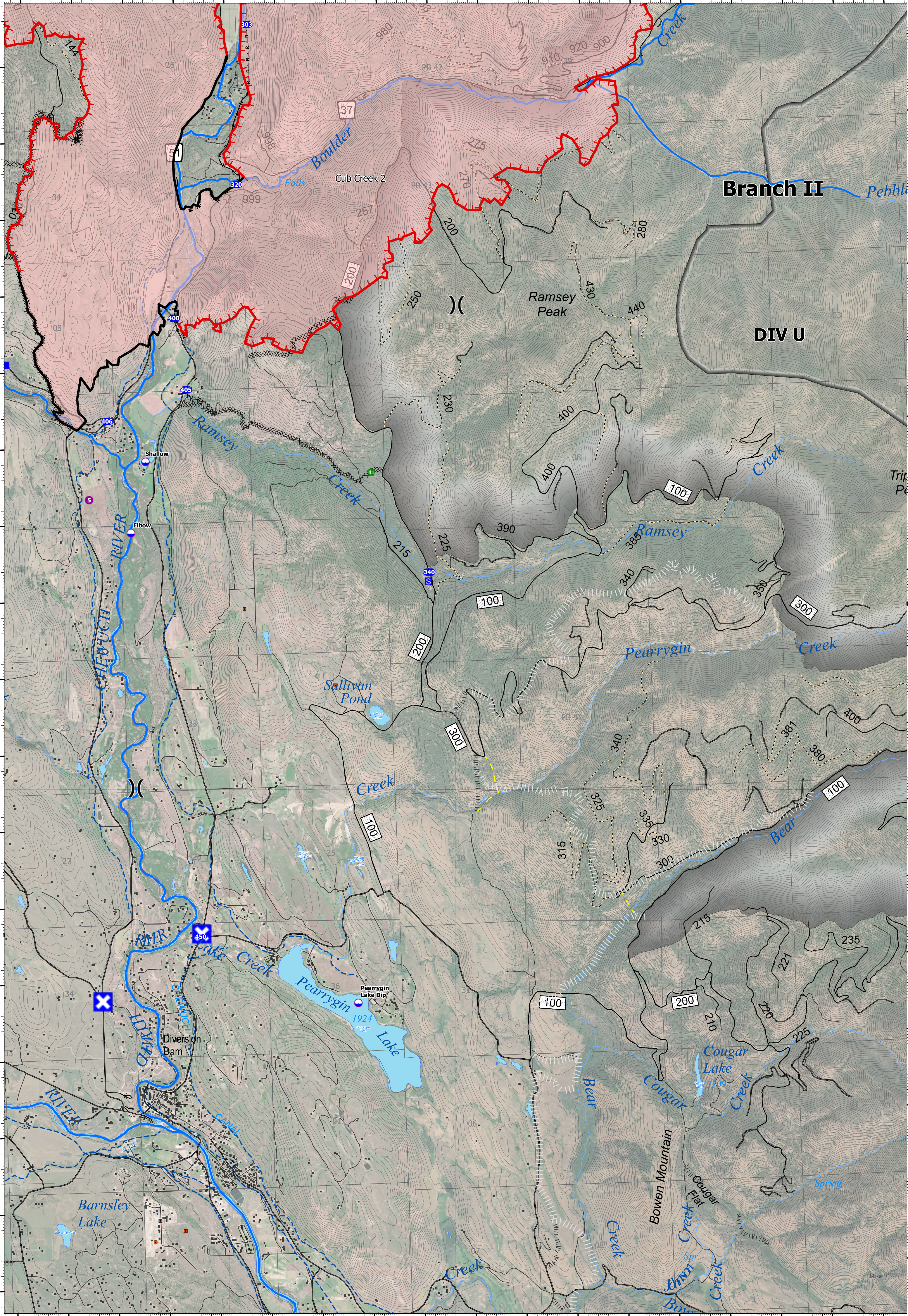


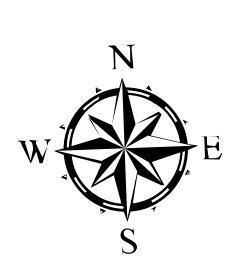
# Operations

120°12'W 120°11.5'W 120°11'W 120°10.5'W 120°10'W 120°9.5'W 120°9'W 120°8.5'W 120°8'W 120°7.5'W 120°7'W 120°6.5'W 120°6.01'W 120°5.5'W 120°5'W 120°4.5'W 120°4'W 120°3.5'W



## Cub Creek 2 WA-NES-000373

Fire Perimeter Acres as of 2021-07-21  
Cub Creek 2 - 35,134  
Map Updated: 7/21/2021 @ 1818  
Cub Creek 2: 5% Contained



- |                  |                       |                            |                          |                               |
|------------------|-----------------------|----------------------------|--------------------------|-------------------------------|
| ■ Structures     | ■ Drop Point          | --- Completed Dozer Line   | — Contained Line         | ● Tripod Fire                 |
| ■ Mines          | ■ Staging Area        | --- Completed Hand Line    | — Fish Bearing Streams   | — <all other values>          |
| ● Dip Site       | ● Value at Risk       | --- Completed Road as Line | --- Decommissioned Roads | --- Past Completed Dozer Line |
| ● Helispot       | ● Fence - Cut/Damaged | --- Planned Hand Line      | --- Canal Ditch          | --- Past Completed Line (UNK) |
| ⌘ Division Break | ⌘ Road Closure        | — Fire Edge                | ■ Roadless Areas         | --- Past Completed Hand Line  |

