

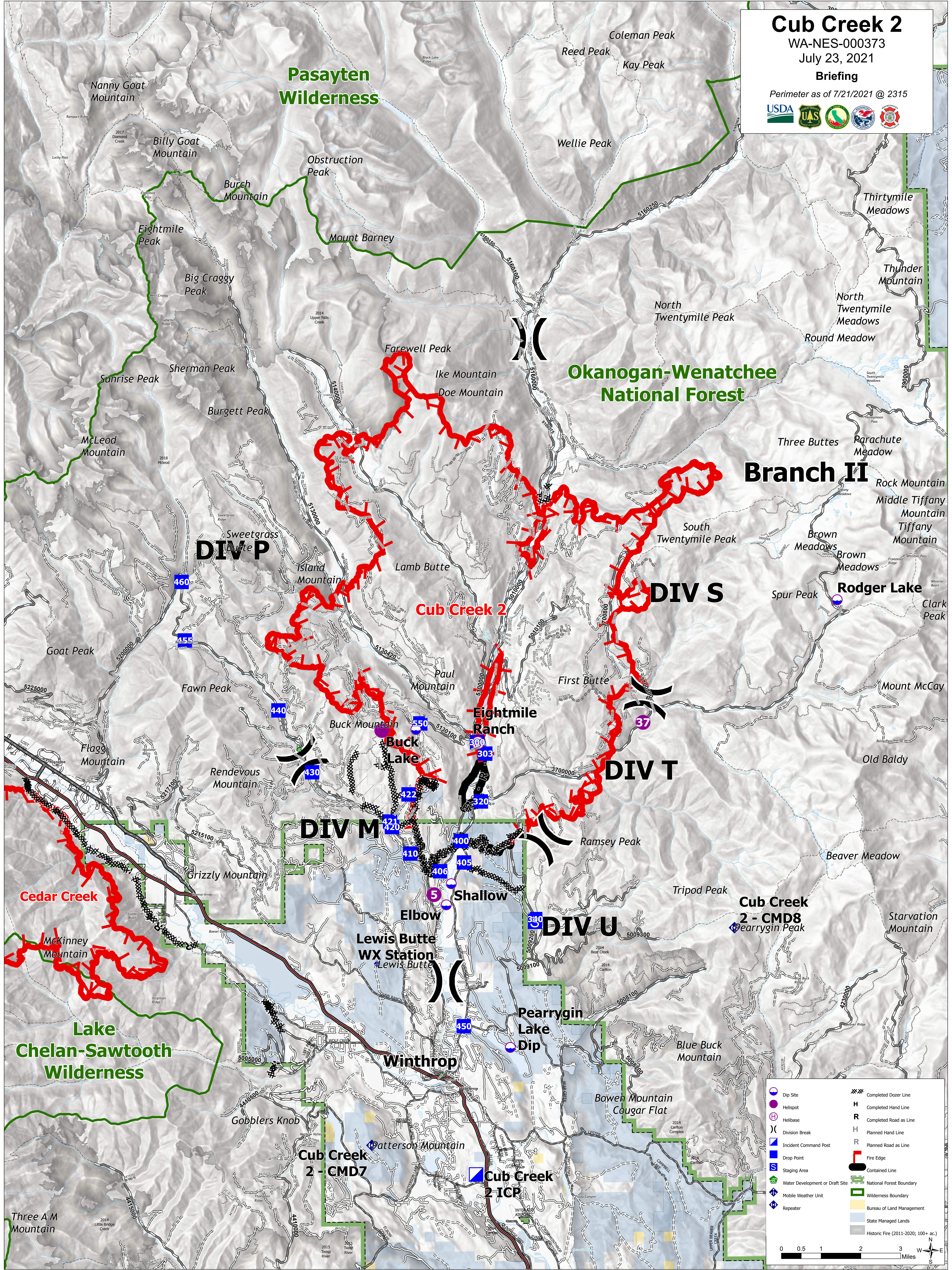
Cub Creek 2

WA-NES-000373

July 23, 2021

Briefing

Perimeter as of 7/21/2021 @ 2315



Branch II

DIV P

DIV S

DIV T

DIV M

DIV U

Cub Creek 2 - CMD7

Cub Creek 2 ICP

Cub Creek 2 - CMD8
Pearrygin Peak

	Dip Site		Completed Dozer Line
	Helispot		Completed Hand Line
	Helibase		Completed Road as Line
	Incident Command Post		Planned Hand Line
	Drop Point		Planned Road as Line
	Staging Area		Fire Edge
	Water Development or Draft Site		Contained Line
	Mobile Weather Unit		National Forest Boundary
	Repeater		Wilderness Boundary
			Bureau of Land Management
			State Managed Lands
			Historic Fire (2011-2020; 100+ ac.)

0 0.5 1 2 3 Miles

W E N S