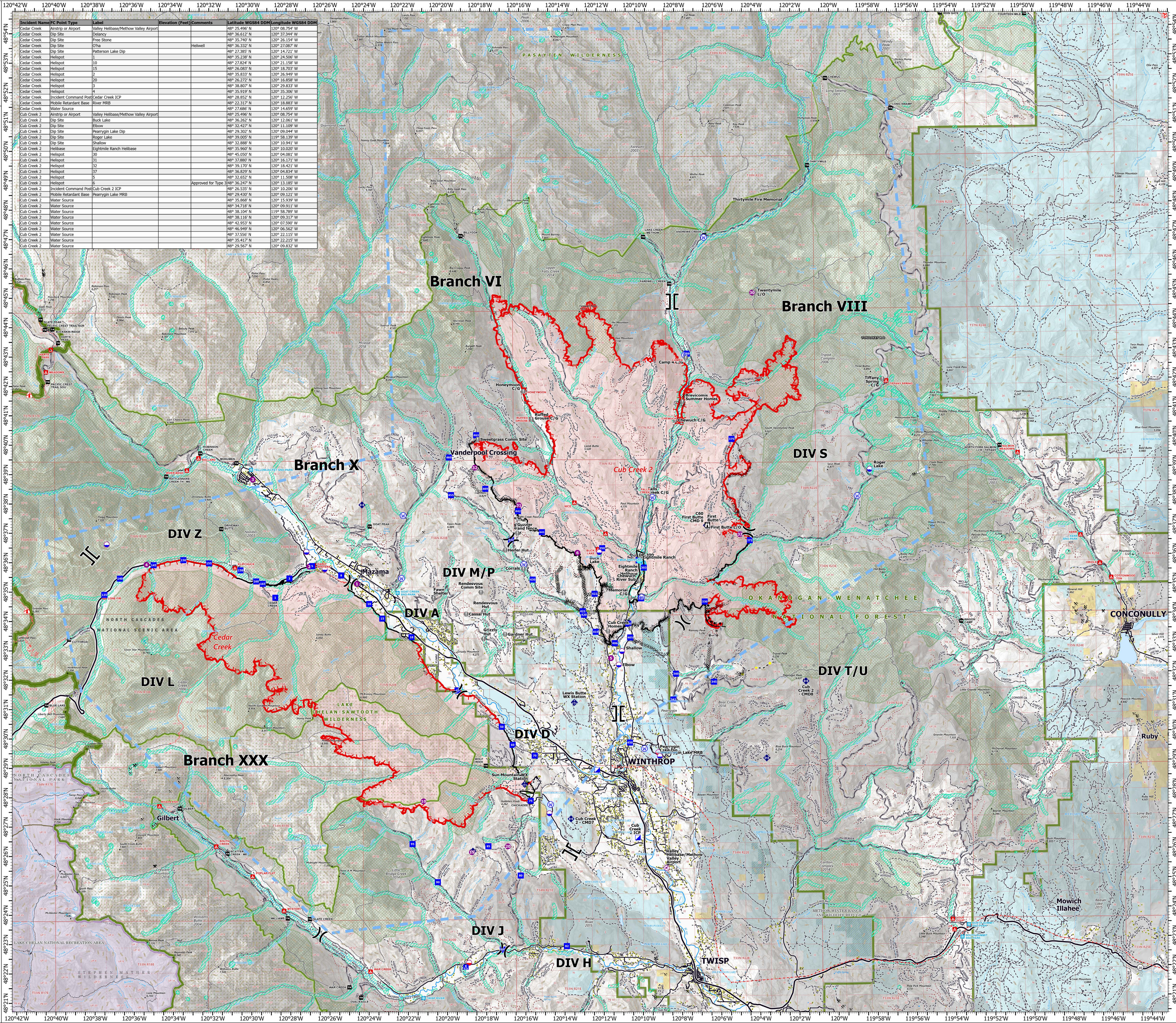


# AIR OPS

Cub Creek 2  
WA-NES-373  
7/31/2021

54,858 acres as 7/29/2021, 2100 hrs

- Airstrip or Airport
- Dip Site
- Mobile Retardant Base
- Helispot
- Helibase
- Division Break
- Branch Break
- Incident Command Post
- Drop Point
- Camp
- Lookout
- Value at Risk
- Mobile Weather Unit
- Repeater
- Water Source
- Completed Burnout
- Completed Dozer Line
- Completed Hand Line
- Completed Road as Line
- Planned Dozer Line
- Planned Hand Line
- Planned Mixed Construction Line
- Planned Road as Line
- Highlighted Feature
- Temporary Flight Restriction
- Fire Edge
- Contained Line
- Gap; Summit
- Campground
- Trailhead
- Snowpark
- Mine
- Electric Power Transmission Lines
- Trail
- National Designated Trail
- Highway
- Paved Road
- Gravel Road
- Dirt Road
- Runway
- Structure
- Retardant Avoidance
- Ranger District Boundary
- Proclaimed FS Boundary
- FS Wilderness Boundary
- Roadless Area
- Other Designation Boundary
- County Boundary
- Township
- Protracted Section
- Section
- Wildfire Daily Fire Perimeter
- Fire History (2000 - Present, 200+ acres)
- U.S. Fish and Wildlife Service
- U.S. Fish and Wildlife Service (Managed by State)
- Bureau of Land Management
- National Park Service
- Other Federal
- State



Incident Name	IC Point Type	Label	Elevation (Feet)	Comments	Latitude WGS84 DDM	Longitude WGS84 DDM
Cedar Creek	Helibase or Airport	Valley Helibase/Methow Valley Airport			48° 36.612' N	120° 37.344' W
Cedar Creek	Dip Site	Delaney			48° 35.740' N	120° 26.154' W
Cedar Creek	Dip Site	Free Stone			48° 36.332' N	120° 27.987' W
Cedar Creek	Dip Site	Oha		Helwell	48° 27.385' N	120° 14.723' W
Cedar Creek	Dip Site	Patterson Lake Dip			48° 35.238' N	120° 24.506' W
Cedar Creek	Helispot	1			48° 27.824' N	120° 21.158' W
Cedar Creek	Helispot	10			48° 26.083' N	120° 18.703' W
Cedar Creek	Helispot	15			48° 35.833' N	120° 26.949' W
Cedar Creek	Helispot	2			48° 26.272' N	120° 16.858' W
Cedar Creek	Helispot	3			48° 38.807' N	120° 29.833' W
Cedar Creek	Helispot	4			48° 35.979' N	120° 35.296' W
Cedar Creek	Helispot	5			48° 28.852' N	120° 12.256' W
Cedar Creek	Helispot	6			48° 22.317' N	120° 18.883' W
Cedar Creek	Helispot	7			48° 27.686' N	120° 14.659' W
Cedar Creek	Helispot	8			48° 35.495' N	120° 08.754' W
Cedar Creek	Helispot	9			48° 36.262' N	120° 12.061' W
Cedar Creek	Helispot	11			48° 32.427' N	120° 11.109' W
Cedar Creek	Helispot	12			48° 29.302' N	120° 09.044' W
Cedar Creek	Helispot	13			48° 39.005' N	119° 58.139' W
Cedar Creek	Helispot	14			48° 32.888' N	120° 10.941' W
Cedar Creek	Helispot	16			48° 35.967' N	120° 10.027' W
Cedar Creek	Helispot	17			48° 45.057' N	120° 04.081' W
Cedar Creek	Helispot	18			48° 37.880' N	120° 16.171' W
Cedar Creek	Helispot	19			48° 39.170' N	120° 18.421' W
Cedar Creek	Helispot	20			48° 36.829' N	120° 04.834' W
Cedar Creek	Helispot	21			48° 32.552' N	120° 11.508' W
Cedar Creek	Helispot	22			48° 35.868' N	120° 15.867' W
Cedar Creek	Helispot	23			48° 36.247' N	120° 13.185' W
Cedar Creek	Helispot	24		Approved for Type	48° 26.535' N	120° 10.206' W
Cedar Creek	Helispot	25			48° 29.430' N	120° 09.121' W
Cedar Creek	Helispot	26			48° 35.868' N	120° 15.867' W
Cedar Creek	Helispot	27			48° 34.718' N	120° 09.911' W
Cedar Creek	Helispot	28			48° 38.104' N	119° 58.789' W
Cedar Creek	Helispot	29			48° 38.115' N	120° 09.317' W
Cedar Creek	Helispot	30			48° 42.053' N	120° 07.503' W
Cedar Creek	Helispot	31			48° 46.949' N	120° 06.562' W
Cedar Creek	Helispot	32			48° 37.556' N	120° 22.115' W
Cedar Creek	Helispot	33			48° 35.417' N	120° 22.215' W
Cedar Creek	Helispot	34			48° 26.567' N	120° 09.832' W

