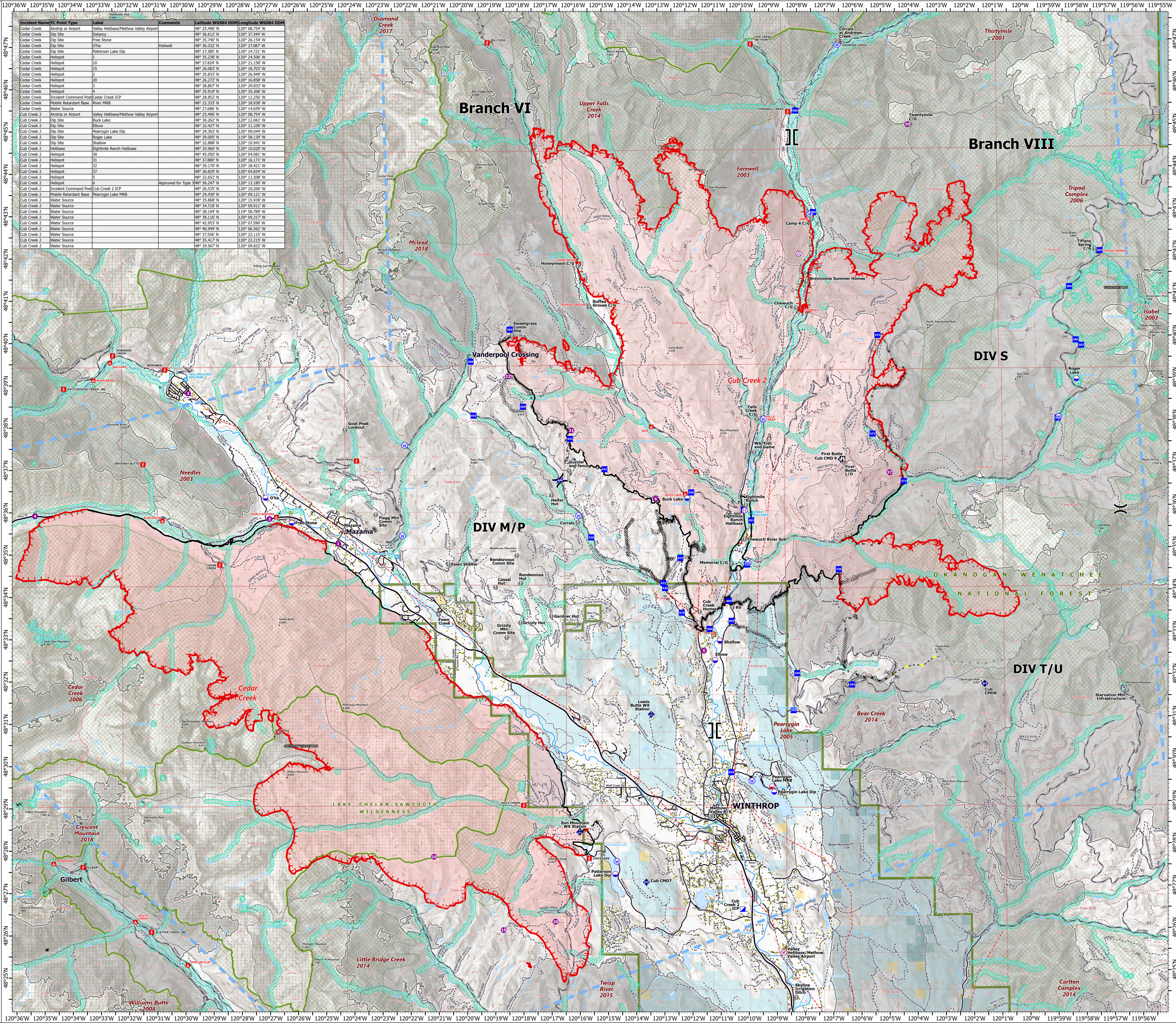


AIR OPS

Cub Creek 2
WA-NES-373
8/2/2021

58,793 acres at 7/31/2021, 1930 hrs



Incident Name	IC Point Type	Label	Comments	Latitude WGS84	Longitude WGS84
Cedar Creek	Airstrip or Airport	Valley Helibase/Methow Valley Airport		48° 35.4952' N	120° 08.7544' W
Cedar Creek	Dip Site			48° 35.7400' N	120° 26.1544' W
Cedar Creek	Dip Site	Free Stone		48° 36.3322' N	120° 27.0877' W
Cedar Creek	Dip Site	Oha		48° 37.3885' N	120° 14.7211' W
Cedar Creek	Dip Site	Patterson Lake Dip	Helwell	48° 35.2338' N	120° 24.5066' W
Cedar Creek	Helispot	1		48° 27.8244' N	120° 21.1588' W
Cedar Creek	Helispot	10		48° 26.0883' N	120° 18.7033' W
Cedar Creek	Helispot	15		48° 35.8133' N	120° 26.9499' W
Cedar Creek	Helispot	20		48° 26.2722' N	120° 16.8888' W
Cedar Creek	Helispot	3		48° 38.8077' N	120° 29.8333' W
Cedar Creek	Helispot	4		48° 35.3919' N	120° 14.7211' W
Cedar Creek	Helispot	14		48° 28.8522' N	120° 12.2556' W
Cedar Creek	Mobile Retardant Base	River MRB		48° 22.3333' N	120° 18.9388' W
Cedar Creek	Water Source	Valley Helibase/Methow Valley Airport		48° 35.4952' N	120° 08.7544' W
Cub Creek 2	Airstrip or Airport	Buck Lake		48° 35.2622' N	120° 12.0611' W
Cub Creek 2	Dip Site	Elbow		48° 32.4222' N	120° 11.1099' W
Cub Creek 2	Dip Site	Pearrygin Lake Dip		48° 29.3022' N	120° 09.0444' W
Cub Creek 2	Dip Site	Roger Lake		48° 39.0055' N	119° 58.1399' W
Cub Creek 2	Dip Site	Shallow		48° 32.8888' N	120° 10.9411' W
Cub Creek 2	Helibase	Eightmile Ranch Helibase		48° 35.9666' N	120° 10.0200' W
Cub Creek 2	Helispot	30		48° 45.0500' N	120° 04.0811' W
Cub Creek 2	Helispot	31		48° 37.8888' N	120° 16.1711' W
Cub Creek 2	Helispot	32		48° 39.1700' N	120° 18.4211' W
Cub Creek 2	Helispot	37		48° 36.8222' N	120° 04.8344' W
Cub Creek 2	Helispot	6		48° 32.8522' N	120° 11.5088' W
Cub Creek 2	Helispot	9		48° 36.2444' N	120° 13.1855' W
Cub Creek 2	Incident Command Post	Cub Creek 2 ICP	Approved for Type	48° 26.5333' N	120° 10.2066' W
Cub Creek 2	Mobile Retardant Base	Pearrygin Lake MRB		48° 29.4300' N	120° 09.1211' W
Cub Creek 2	Water Source	Valley Helibase/Methow Valley Airport		48° 35.4952' N	120° 08.7544' W
Cub Creek 2	Water Source	Buck Lake		48° 35.2622' N	120° 12.0611' W
Cub Creek 2	Water Source	Elbow		48° 32.4222' N	120° 11.1099' W
Cub Creek 2	Water Source	Pearrygin Lake		48° 29.3022' N	120° 09.0444' W
Cub Creek 2	Water Source	Roger Lake		48° 39.0055' N	119° 58.1399' W
Cub Creek 2	Water Source	Shallow		48° 32.8888' N	120° 10.9411' W
Cub Creek 2	Water Source	Valley Helibase/Methow Valley Airport		48° 35.4952' N	120° 08.7544' W

- Aerial Hazard
- Airstrip or Airport
- Dip Site
- Mobile Retardant Base
- Helispot
- Helibase
- Division Break
- Branch Break
- Incident Command Post
- Drop Point
- Lookout
- Value at Risk
- Mobile Weather Unit
- Repeater
- Water Source
- Completed Dozer Line
- Completed Hand Line
- Completed Mixed Construction Line
- Completed Road as Line
- Planned Dozer Line
- Planned Hand Line
- Planned Mixed Construction Line
- Planned Road as Line
- Highlighted Feature
- Temporary Flight Restriction
- Fire Edge
- Contained Line
- Electric Power Transmission Lines
- Gap; Summit
- Mine
- Trail
- National Designated Trail
- Highway
- Paved Road
- Gravel Road
- Dirt Road
- Runway
- Structure
- Retardant Avoidance
- Ranger District Boundary
- Proclaimed FS Boundary
- FS Wilderness Boundary
- Roadless Area
- County Boundary
- Township
- Protracted Section
- Section
- Wildfire Daily Fire Perimeter
- U.S. Fish and Wildlife Service
- U.S. Fish and Wildlife Service (Managed by State)
- Bureau of Land Management
- State
- Loomis State Forest Boundary
- Fire History (2000 - Present, 200+ acres)

