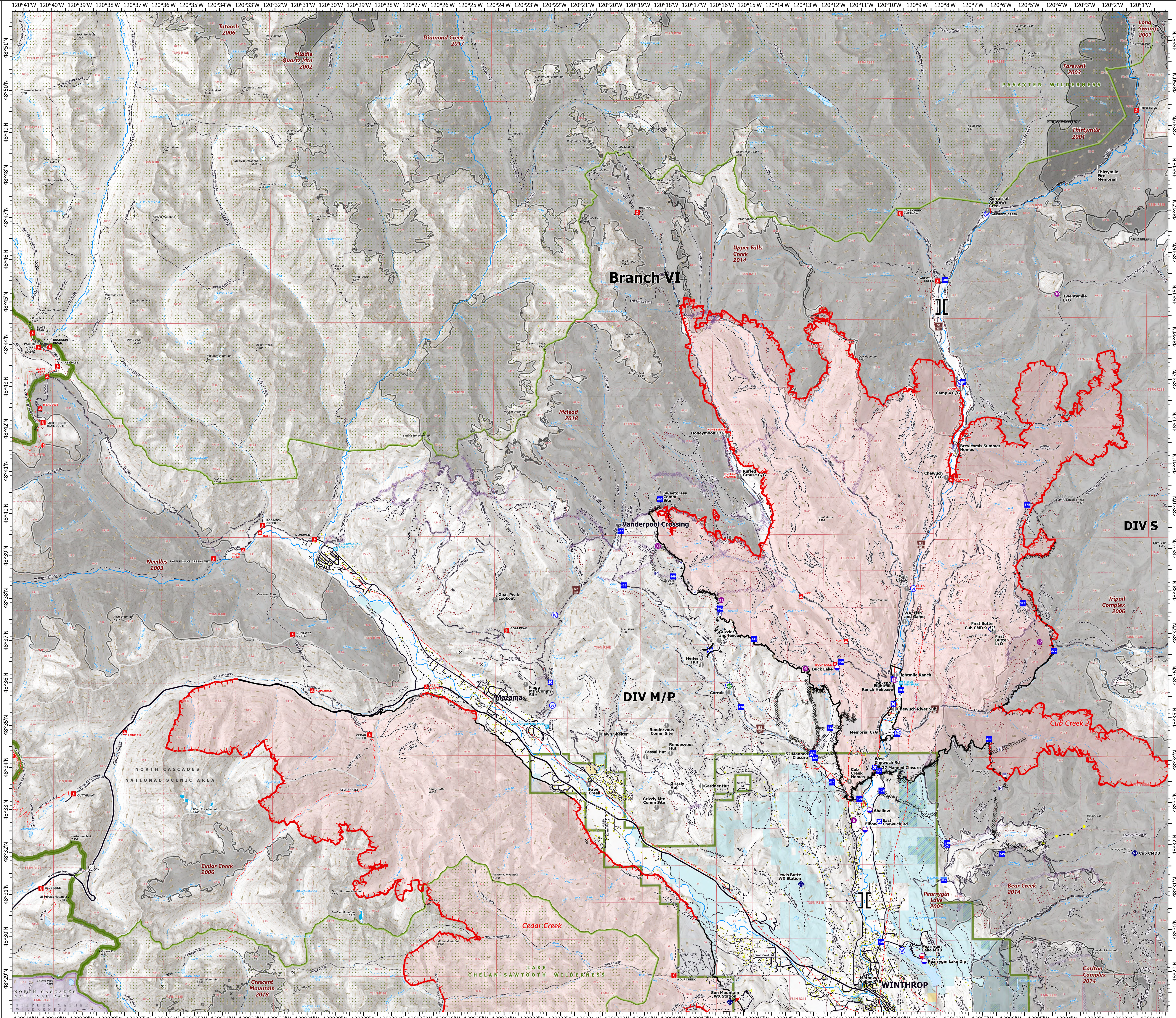
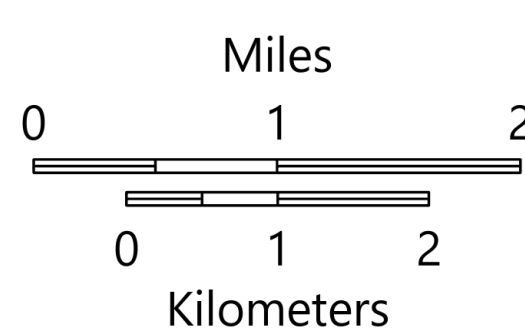


OPERATIONS

Branch VI
Cub Creek 2
WA-NES-373
8/2/2021

58,793 acres at 7/31/2021, 1930 hrs

- Pump
- Water Tank
- Dip Site
- Mobile Retardant Base
- Helispot
- Helibase
- Division Break
- Branch Break
- Drop Point
- Closure
- Staging Area
- Lookout
- Value at Risk
- Water Development or Draft Site
- Mobile Weather Unit
- Repeater
- Water Source
- Completed Dozer Line
- Completed Hand Line
- Completed Mixed Construction Line
- Completed Road as Line
- Planned Dozer Line
- Planned Hand Line
- Planned Mixed Construction Line
- Planned Road as Line
- Highlighted Feature
- Fire Edge
- Contained Line
- Wildfire Daily Fire Perimeter
- Fire History (2000 - Present, 200+ acres)
- Campground
- Trailhead
- Snowpark
- Mine
- Highway
- Paved Road
- Gravel Road
- Dirt Road
- Electric Power Transmission Line
- Structure
- FS Wilderness Boundary
- Other Designation Boundary
- Bureau of Land Management
- National Park Service
- State



Branch VI

DIV M/P

DIV S

WINTHROP

Mazama

Vanderpool Crossing

NORTH CASCADES NATIONAL SCENIC AREA

LAKE CHELAN SAWTOOTH WILDERNESS

PASAYTEN WILDERNESS

NORTH CASCADES NATIONAL PARK

WILLYS WILDERNESS

OPERATIONS

Branch VIII

Cub Creek 2

WA-NES-373

8/2/2021

58,793 acres at 7/31/2021, 1930 hrs

- Pump
- Water Tank
- Dip Site
- Mobile Retardant Base
- Helispot
- Helibase
- Division Break
- Branch Break
- Incident Command Post
- Drop Point
- Closure
- Staging Area
- Lookout
- Value at Risk
- Water Development or Draft Site
- Mobile Weather Unit
- Repeater
- Water Source
- Completed Dozer Line
- Completed Hand Line
- Completed Mixed Construction Line
- Completed Road as Line
- Planned Dozer Line
- Planned Hand Line
- Planned Mixed Construction Line
- Planned Road as Line
- Highlighted Feature
- Fire Edge
- Contained Line
- Wildfire Daily Fire Perimeter
- Fire History (2000 - Present, 200+ acres)
- Campground
- Trailhead
- Snowpark
- Mine
- Highway
- Paved Road
- Gravel Road
- Dirt Road
- Electric Power Transmission Line
- Structure
- FS Wilderness Boundary
- Bureau of Land Management
- Other Federal
- State
- Loomis State Forest Boundary

