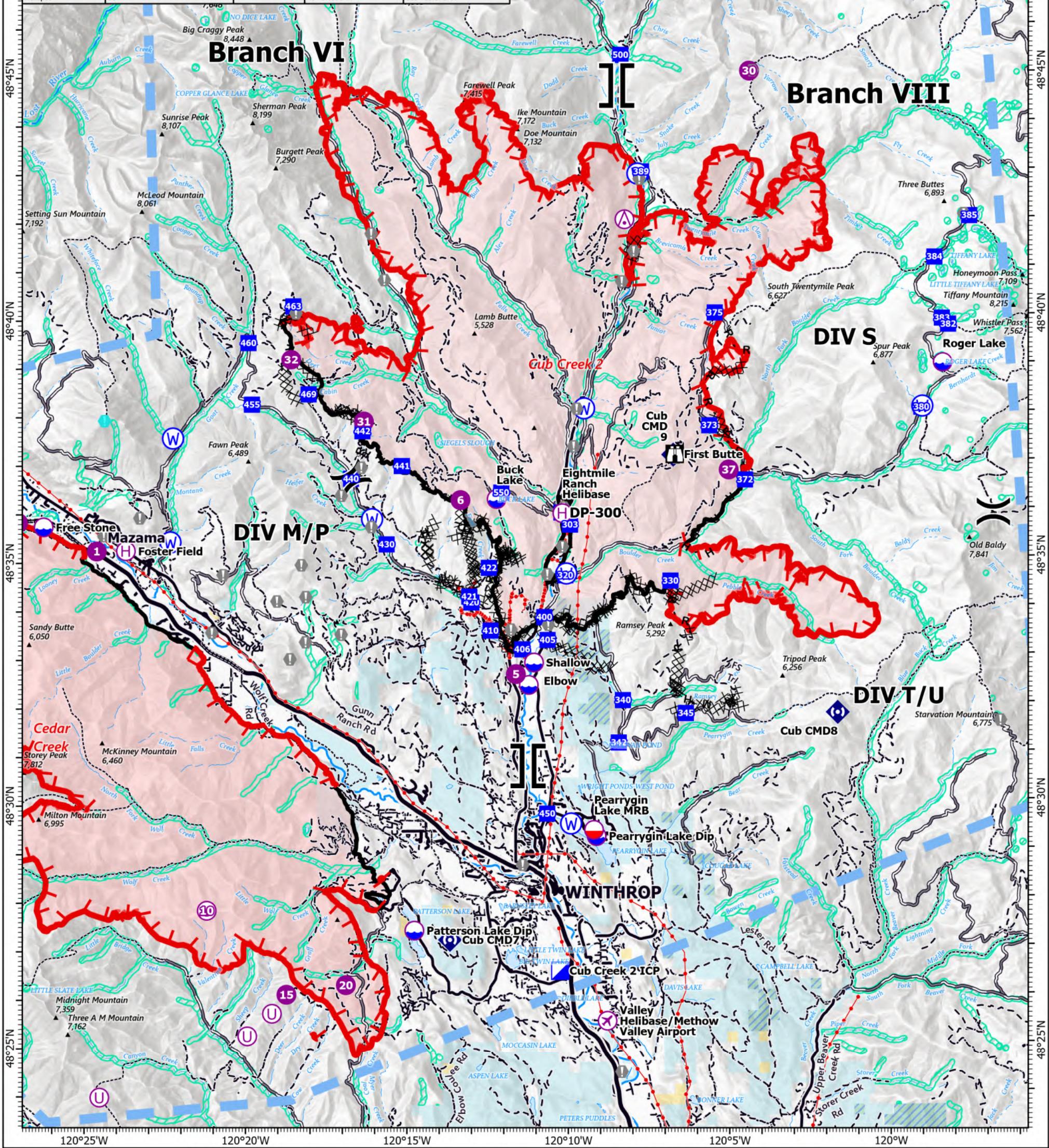


FC Point Type	Label	Comments	Latitude WGS84 DDM	Longitude WGS84 DDM	FC Point Type	Label	Comments	Latitude WGS84 DDM	Longitude WGS84 DDM
Airstrip or Airport	Valley Helibase/Methow Valley Airport		48° 25.496' N	120° 08.754' W	Helispot	32		48° 39.170' N	120° 18.421' W
Airstrip or Airport	Valley Helibase/Methow Valley Airport		48° 25.496' N	120° 08.754' W	Helispot	37		48° 36.829' N	120° 04.834' W
Dip Site	Buck Lake		48° 36.262' N	120° 12.061' W	Helispot	4		48° 35.919' N	120° 35.306' W
Dip Site	Delancy		48° 36.612' N	120° 37.344' W	Helispot	5		48° 32.652' N	120° 11.508' W
Dip Site	Elbow		48° 32.427' N	120° 11.109' W	Helispot	6	Approved for Type 3	48° 36.247' N	120° 13.185' W
Dip Site	Free Stone		48° 35.740' N	120° 26.154' W	Incident Command Post	Cedar Creek ICP		48° 28.852' N	120° 12.256' W
Dip Site	O'ha	Heliwell	48° 36.332' N	120° 27.087' W	Incident Command Post	Cub Creek 2 ICP		48° 26.535' N	120° 10.206' W
Dip Site	Patterson Lake Dip		48° 27.385' N	120° 14.721' W	Mobile Retardant Base	Pearrygin Lake MRB		48° 29.430' N	120° 09.121' W
Dip Site	Pearrygin Lake Dip		48° 29.302' N	120° 09.044' W	Mobile Retardant Base	River MRB		48° 22.333' N	120° 18.938' W
Dip Site	Roger Lake		48° 39.005' N	119° 58.139' W	Water Source			48° 35.868' N	120° 15.939' W
Dip Site	Shallow		48° 32.888' N	120° 10.941' W	Water Source			48° 27.686' N	120° 14.659' W
Helibase	Eightmile Ranch Helibase		48° 35.960' N	120° 10.020' W	Water Source			48° 34.718' N	120° 09.911' W
Helispot	1		48° 35.238' N	120° 24.506' W	Water Source			48° 38.104' N	119° 58.789' W
Helispot	10		48° 27.824' N	120° 21.158' W	Water Source			48° 38.116' N	120° 09.317' W
Helispot	15		48° 26.083' N	120° 18.703' W	Water Source			48° 42.953' N	120° 07.590' W
Helispot	2		48° 35.833' N	120° 26.949' W	Water Source			48° 46.949' N	120° 06.562' W
Helispot	20		48° 26.272' N	120° 16.858' W	Water Source			48° 37.556' N	120° 22.115' W
Helispot	3		48° 38.807' N	120° 29.833' W	Water Source			48° 35.417' N	120° 22.215' W
Helispot	30		48° 45.050' N	120° 04.081' W	Water Source			48° 29.567' N	120° 09.832' W
Helispot	31		48° 37.880' N	120° 16.171' W	Water Source				



PILOT

Cub Creek 2
WA-NES-373
8/2/2021

58,793 acres at 7/31/2021, 1930 hrs

1:150,000 - SWAIMT2 GIS - 8/1/2021 2204
Acres from IR and GIS
North American 1983 Datum, LatLong Grid

<ul style="list-style-type: none"> ⊗ Aerial Hazard ⊗ Airstrip or Airport ⊙ Dip Site ⊙ Mobile Retardant Base ⊙ Helispot ⊙ Helibase ⊙ Unimproved Landing Area ⌘ Division Break ⌘ Branch Break ⊙ Incident Command Post ⊙ Drop Point 	<ul style="list-style-type: none"> ⊙ Lookout ⊙ Value at Risk ⊙ Repeater ⊙ Water Source ⊗ Completed Dozer Line H Completed Hand Line M Completed Mixed Construction Line R Completed Road as Line ⊙ Temporary Flight Restriction ⊙ Fire Edge ⊙ Contained Line 	<ul style="list-style-type: none"> — Electric Power Transmission Lines ⋯ Trail — Highway — Paved Road — Gravel Road — Dirt Road — Retardant Avoidance — Wildfire Daily Fire Perimeter — U.S. Fish and Wildlife Service — U.S. Fish and Wildlife Service (Mgd. by State) — Bureau of Land Management — State
--	---	---

Nautical Miles
0 1 2

Kilometers
0 1 2