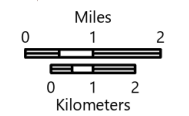
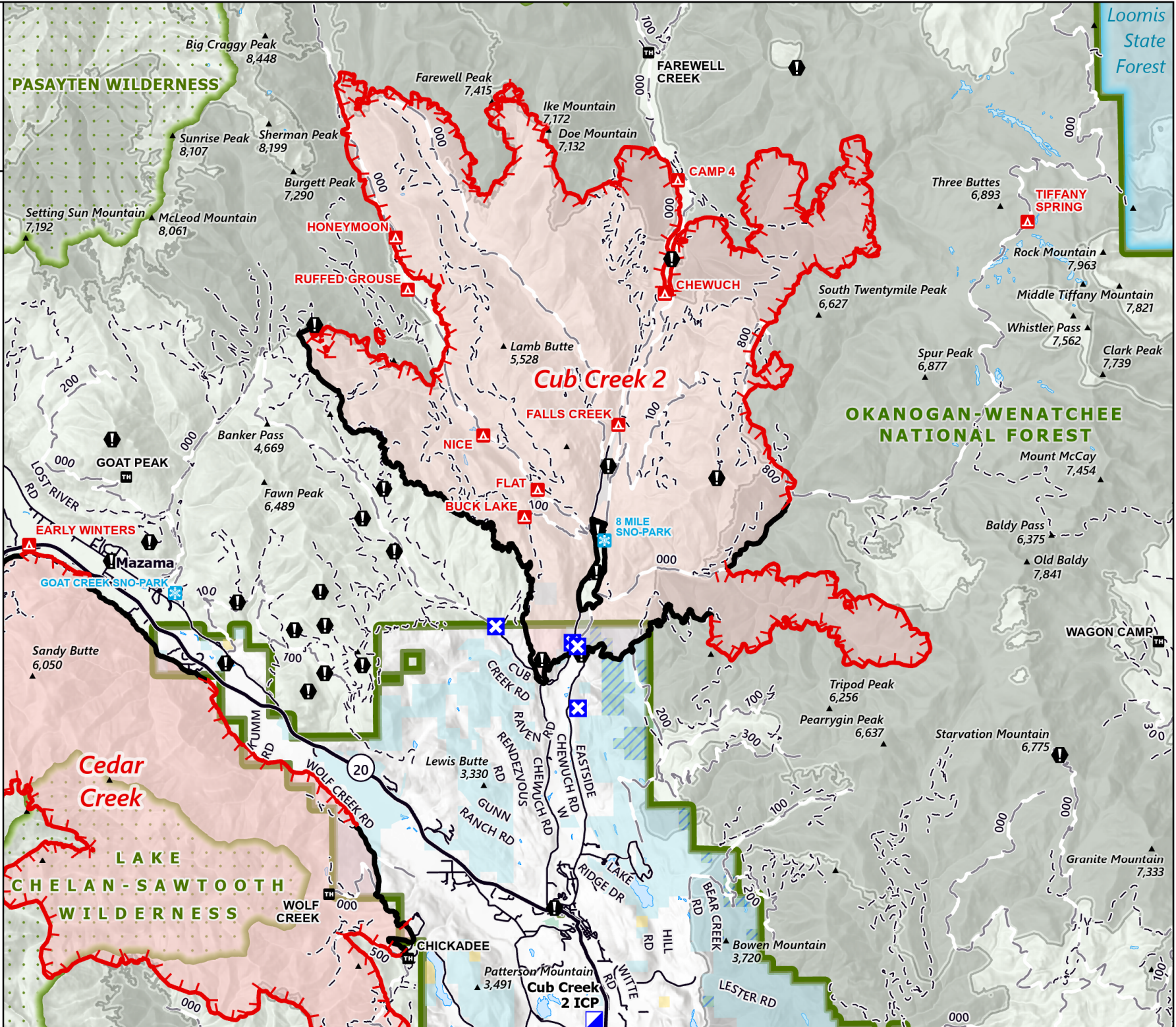


PUBLIC INFORMATION

Cub Creek 2
WA-NES-373
8/2/2021

58,793 acres at 7/31/2021,
1930 hrs

- Fire Edge
- Contained Line
- Wildfire Daily Fire Perimeter
- Fire History (2000 - Present, 200+ acres)
- Incident Command Post
- Closure
- Value at Risk
- Wilderness Boundary
- National Forest Boundary
- Loomis State Forest Boundary
- U.S. Fish and Wildlife Service
- U.S. Fish and Wildlife Service (Managed by State)
- Bureau of Land Management
- State
- Gap; Summit
- Campground
- Trailhead
- Snowpark
- Highway
- Paved
- Gravel
- Dirt Road



1:180,000 - SWAIMT2 GIS
8/2/2021 0620

North American 1983 Datum, Lat/Long Grid