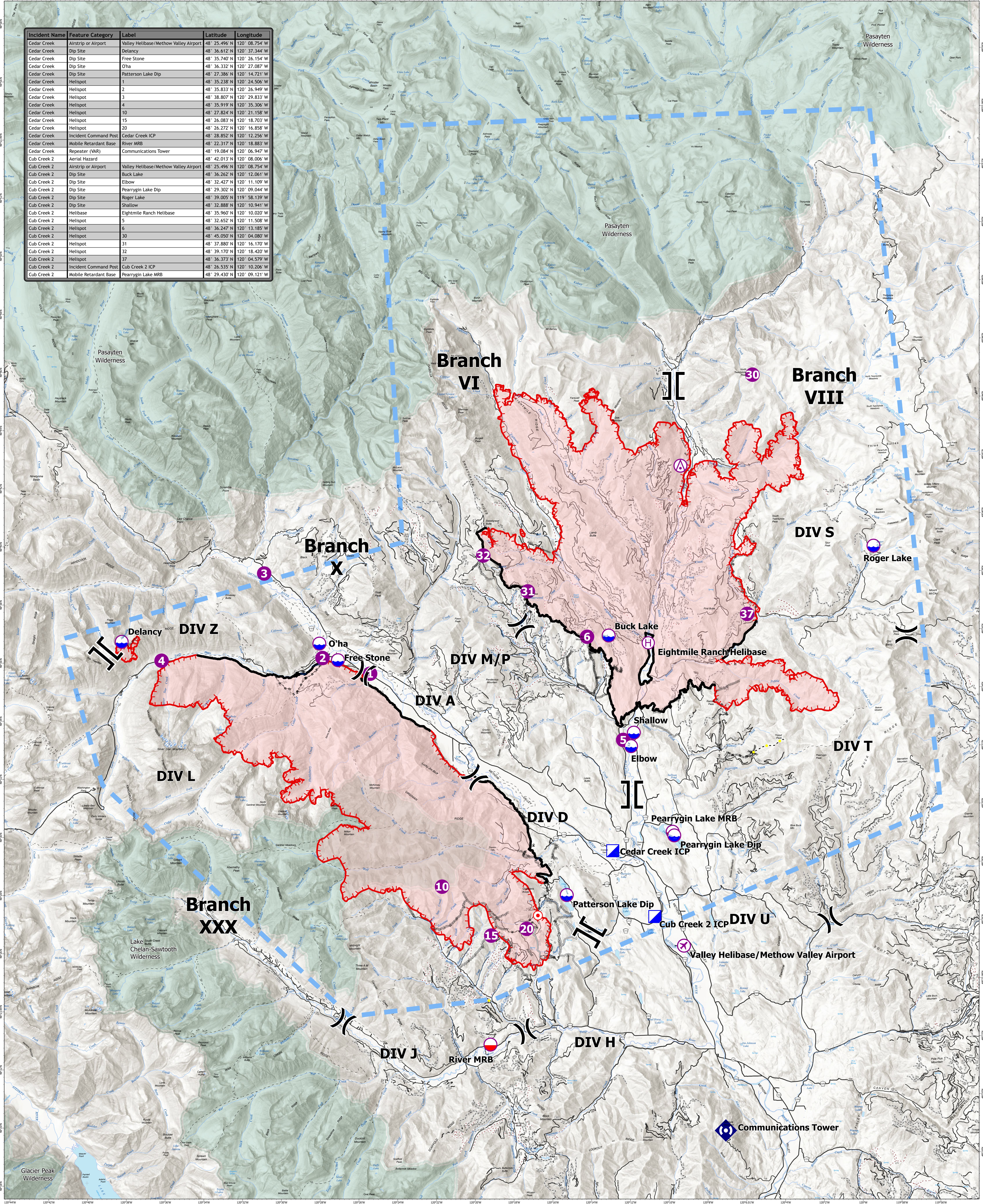
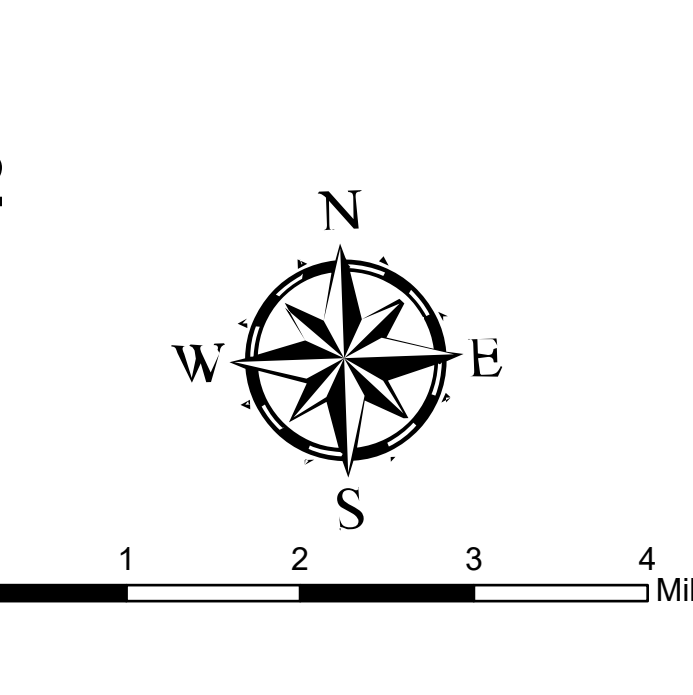


Incident Name	Feature Category	Label	Latitude	Longitude
Cedar Creek	Airstrip or Airport	Valley Helibase/Methow Valley Airport	48° 25.496' N	120° 08.754' W
Cedar Creek	Dip Site	Delancy	48° 36.612' N	120° 37.344' W
Cedar Creek	Dip Site	Free Stone	48° 35.740' N	120° 26.154' W
Cedar Creek	Dip Site	O'ha	48° 36.332' N	120° 27.087' W
Cedar Creek	Dip Site	Patterson Lake Dip	48° 27.386' N	120° 14.721' W
Cedar Creek	Helispot	1	48° 35.238' N	120° 24.506' W
Cedar Creek	Helispot	2	48° 35.833' N	120° 26.949' W
Cedar Creek	Helispot	3	48° 38.807' N	120° 29.833' W
Cedar Creek	Helispot	4	48° 35.919' N	120° 35.306' W
Cedar Creek	Helispot	10	48° 27.824' N	120° 21.158' W
Cedar Creek	Helispot	15	48° 26.083' N	120° 18.703' W
Cedar Creek	Helispot	20	48° 26.272' N	120° 16.858' W
Cedar Creek	Incident Command Post	Cedar Creek ICP	48° 28.852' N	120° 12.256' W
Cedar Creek	Mobile Retardant Base	River MRB	48° 22.317' N	120° 18.883' W
Cedar Creek	Repeater (VAR)	Communications Tower	48° 19.084' N	120° 06.947' W
Cedar Creek 2	Aerial Hazard		48° 42.013' N	120° 08.006' W
Cub Creek 2	Airstrip or Airport	Valley Helibase/Methow Valley Airport	48° 25.496' N	120° 08.754' W
Cub Creek 2	Dip Site	Buck Lake	48° 36.262' N	120° 12.061' W
Cub Creek 2	Dip Site	Elbow	48° 32.427' N	120° 11.109' W
Cub Creek 2	Dip Site	Pearrygin Lake Dip	48° 29.302' N	120° 09.044' W
Cub Creek 2	Dip Site	Roger Lake	48° 39.005' N	119° 58.139' W
Cub Creek 2	Dip Site	Shallow	48° 32.888' N	120° 10.941' W
Cub Creek 2	Helibase	Eightmile Ranch Helibase	48° 35.960' N	120° 10.020' W
Cub Creek 2	Helispot	5	48° 32.652' N	120° 11.508' W
Cub Creek 2	Helispot	6	48° 36.247' N	120° 13.185' W
Cub Creek 2	Helispot	30	48° 45.050' N	120° 04.080' W
Cub Creek 2	Helispot	31	48° 37.880' N	120° 16.170' W
Cub Creek 2	Helispot	32	48° 39.170' N	120° 18.420' W
Cub Creek 2	Helispot	37	48° 36.373' N	120° 04.579' W
Cub Creek 2	Incident Command Post	Cub Creek 2 ICP	48° 26.535' N	120° 10.206' W
Cub Creek 2	Mobile Retardant Base	Pearrygin Lake MRB	48° 29.430' N	120° 09.121' W



AirOps
Cedar Creek & Cub Creek 2
 WA-OWF-000320 WA-NES-000373
 Fire Perimeter Acres as of
 2021-08-02
 Cedar Creek - 50,406
 Cub Creek 2 - 58,793
 Delancy - 223



- Repeater
- Aerial Hazard
- Airstrip or Airport
- Dip Site
- Mobile Retardant Base
- Helispot
- Helibase
- Division Break
- Branch Break
- Incident Command Post
- Hot Spot - Spot Fire
- Completed Dozer Line
- Completed Hand Line
- Completed Mixed Construction Line
- Completed Road as Line
- Access or Improved Road
- Highlighted Feature
- Temporary Flight Restriction
- Fire Edge
- Contained Line
- Wildfire Daily Fire Perimeter
- Highways
- Open FS Roads
- Closed FS Roads
- Road Core Decom
- Trails
- Wilderness

Map Updated: 8/3/2021 @ 0615

Logos for Incident Management Team 2 and Southwest Area are located in the bottom right corner.