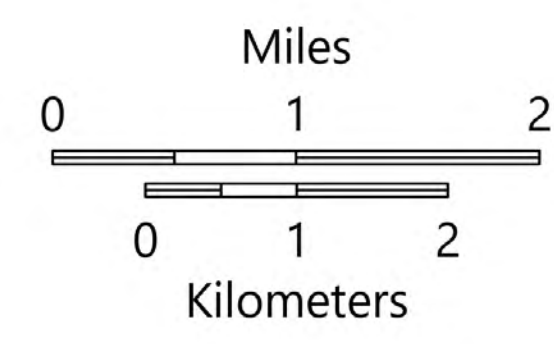
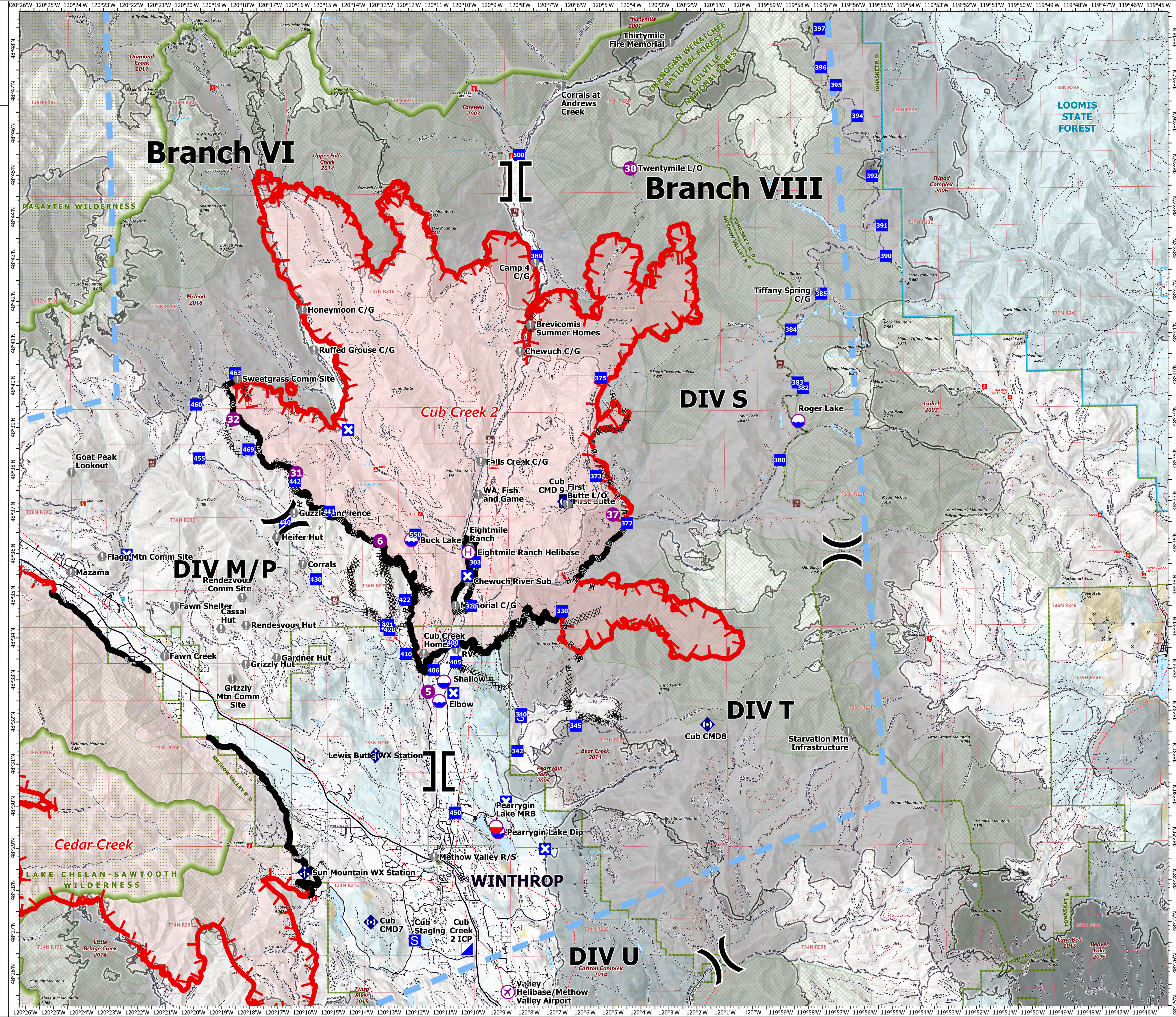


# BRIEFING

Cub Creek 2  
WA-NES-373  
8/3/2021

58,793 acres at 7/31/2021, 1930 hrs

- Airstrip or Airport
- Dip Site
- Mobile Retardant Base
- Helispot
- Helibase
- Division Break
- Branch Break
- Incident Command Post
- Drop Point
- Closure
- Staging Area
- Lookout
- Value at Risk
- Mobile Weather Unit
- Repeater
- Completed Dozer Line
- Completed Hand Line
- Completed Mixed Construction Line
- Completed Road as Line
- Temporary Flight Restriction
- Fire Edge
- Contained Line
- Wildfire Daily Fire Perimeter
- Fire History (2000 - Present, 200+ acres)
- Gap; Summit
- Mine
- Campground
- Trailhead
- Snowpark
- Electric Power Transmission Lines
- Highway
- Paved Road
- Gravel Road
- Dirt Road
- Trail
- Ranger District Boundary
- FS Wilderness Boundary
- Township
- Section
- Section
- Bureau of Land Management
- Other Federal
- State
- U.S. Fish and Wildlife Service
- U.S. Fish and Wildlife Service (Managed by State)



1:50,000 - SWAMT2 GIS - 8/2/2021 2336  
Acres from IR and GIS  
North American 1983 Datum, LatLong Grid