

OPERATIONS

DIV T/U

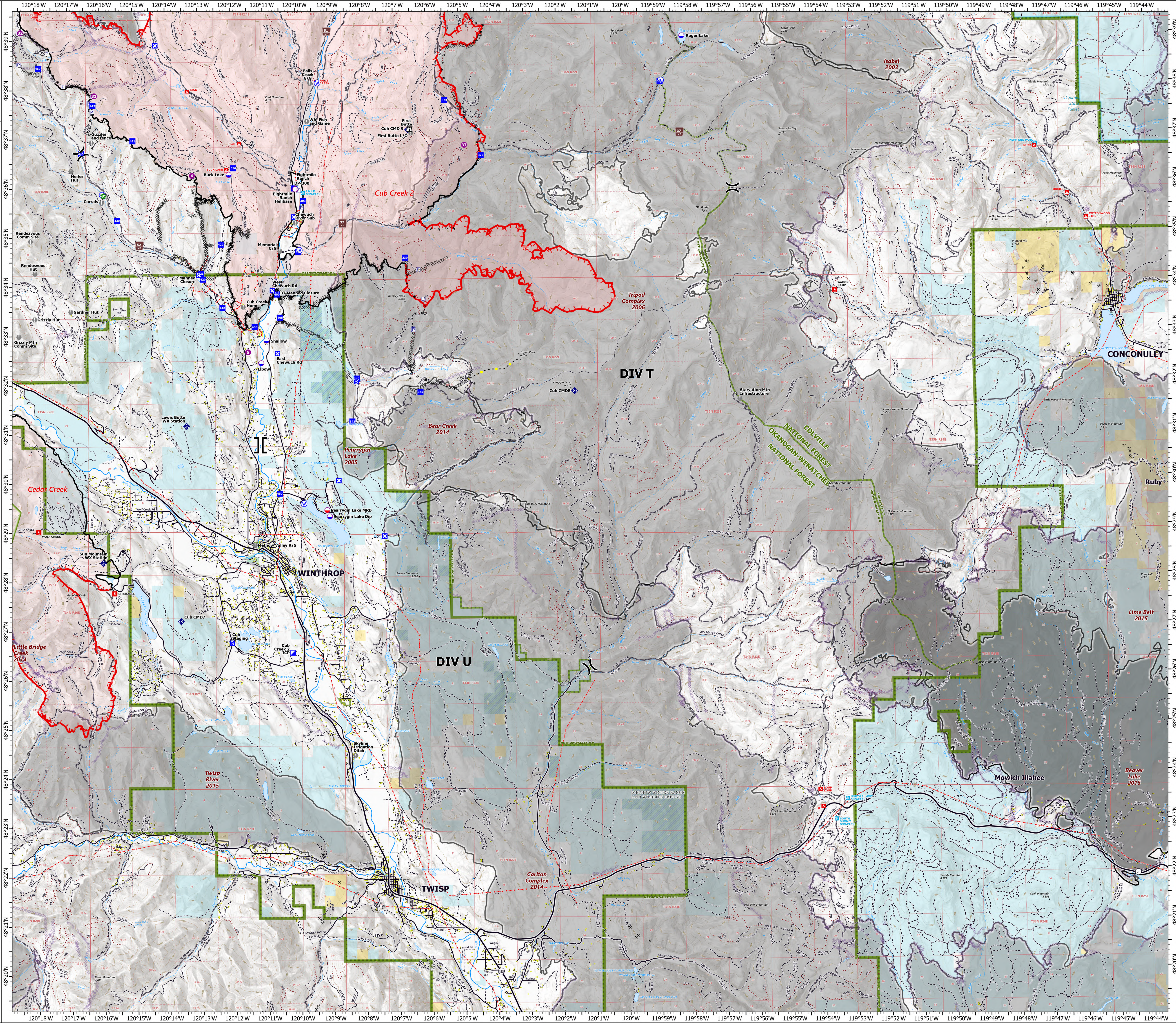
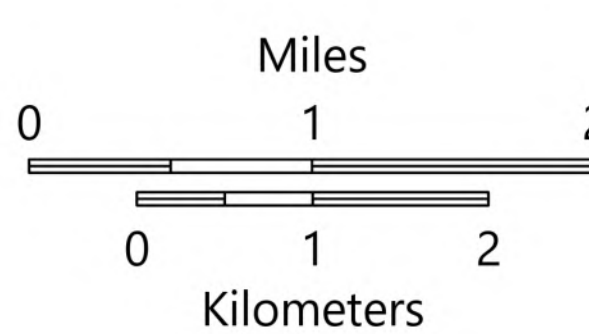
Cub Creek 2

WA-NES-373

8/3/2021

58,793 acres at 7/31/2021, 1930 hrs

- Pump
- Water Tank
- Dip Site
- Mobile Retardant Base
- Helispot
- Helibase
- Division Break
- Branch Break
- Incident Command Post
- Drop Point
- Closure
- Staging Area
- Lookout
- Value at Risk
- Water Development or Draft Site
- Mobile Weather Unit
- Repeater
- Water Source
- Completed Dozer Line
- Completed Hand Line
- Completed Mixed Construction Line
- Completed Road as Line
- Planned Hand Line
- Planned Road as Line
- Highlighted Feature
- Fire Edge
- Contained Line
- Wildfire Daily Fire Perimeter
- Campground
- Trailhead
- Snowpark
- Mine
- Historic Dozer Line
- Highway
- Paved Road
- Gravel Road
- Dirt Road
- Structure
- FS Wilderness Boundary
- Wildfire Daily Fire Perimeter
- U.S. Fish and Wildlife Service
- U.S. Fish and Wildlife Service (Managed by State)
- Bureau of Land Management
- Other Federal
- State
- Loomis State Forest Boundary
- Fire History (2000 - Present, 200+ acres)
- Electric Power Transmission Lines



120°18'W 120°17'W 120°16'W 120°15'W 120°14'W 120°13'W 120°12'W 120°11'W 120°10'W 120°9'W 120°8'W 120°7'W 120°6'W 120°5'W 120°4'W 120°3'W 120°2'W 120°1'W 120°W 119°59'W 119°58'W 119°57'W 119°56'W 119°55'W 119°54'W 119°53'W 119°52'W 119°51'W 119°50'W 119°49'W 119°48'W 119°47'W 119°46'W 119°45'W 119°44'W

48°30'N 48°29'N 48°28'N 48°27'N 48°26'N 48°25'N 48°24'N 48°23'N 48°22'N 48°21'N 48°20'N