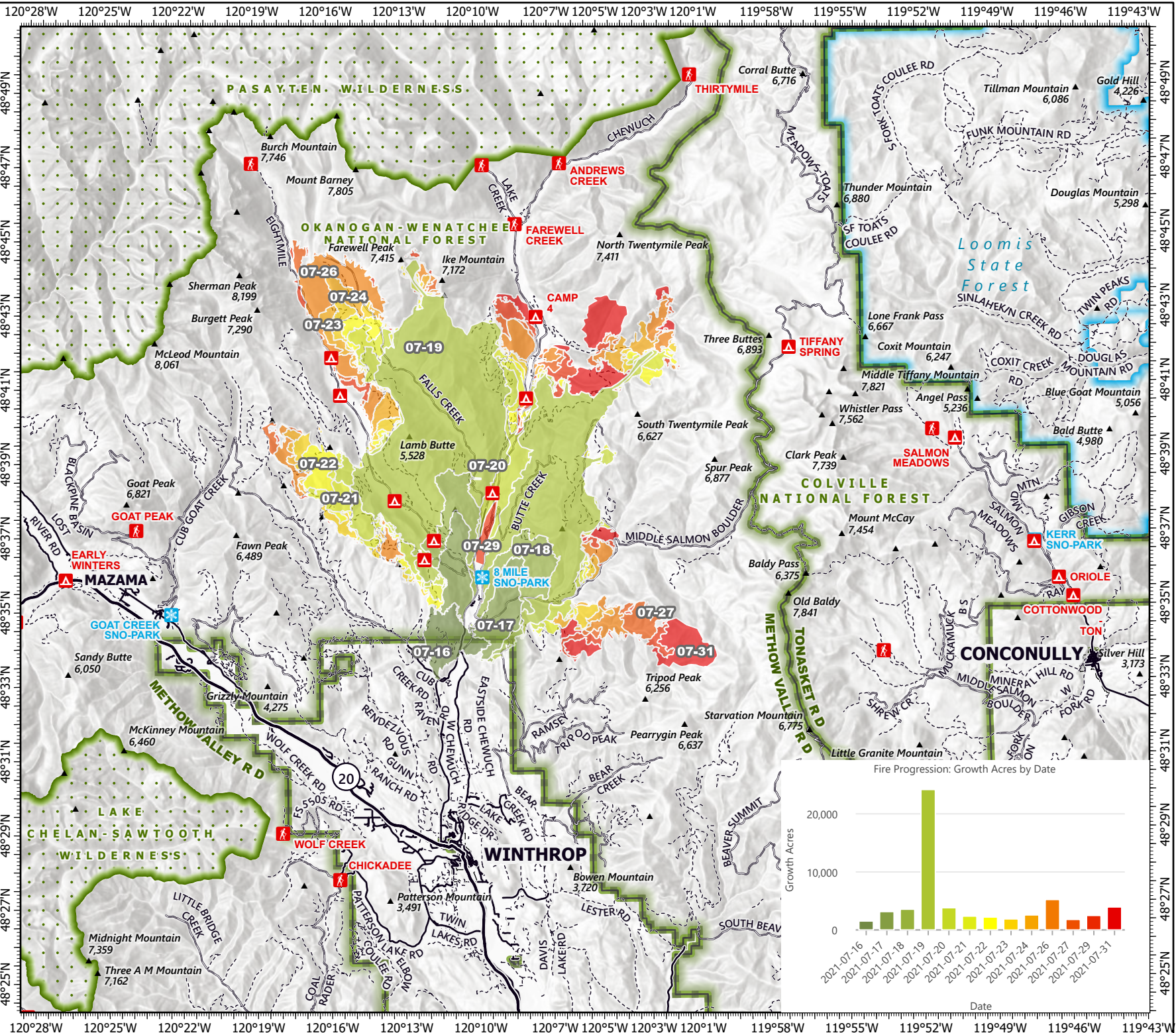


PROGRESSION

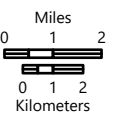
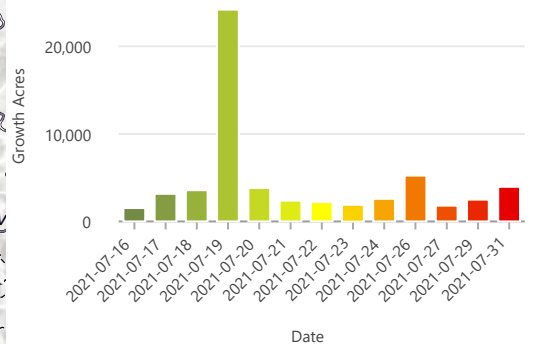
Cub Creek 2
WA-NES-373
8/3/2021

58,793 acres as of 7/31/2021,
1930 hrs

- 2021-07-16
- 2021-07-17
- 2021-07-18
- 2021-07-19
- 2021-07-20
- 2021-07-21
- 2021-07-22
- 2021-07-23
- 2021-07-24
- 2021-07-26
- 2021-07-27
- 2021-07-29
- 2021-07-31
- Campground
- Trailhead
- Snowpark
- National Forest Boundary
- Wilderness Boundary
- Ranger District Boundary
- Loomis State Forest Boundary
- Highway
- Paved Road
- Gravel Road
- Dirt Road



Fire Progression: Growth Acres by Date



1:250,000 - SWAIMT2 GIS
8/3/2021 0744
Acres from IR and GIS
North American 1983 Datum, LatLong Grid