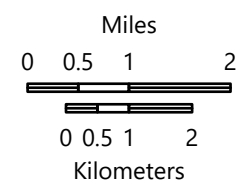
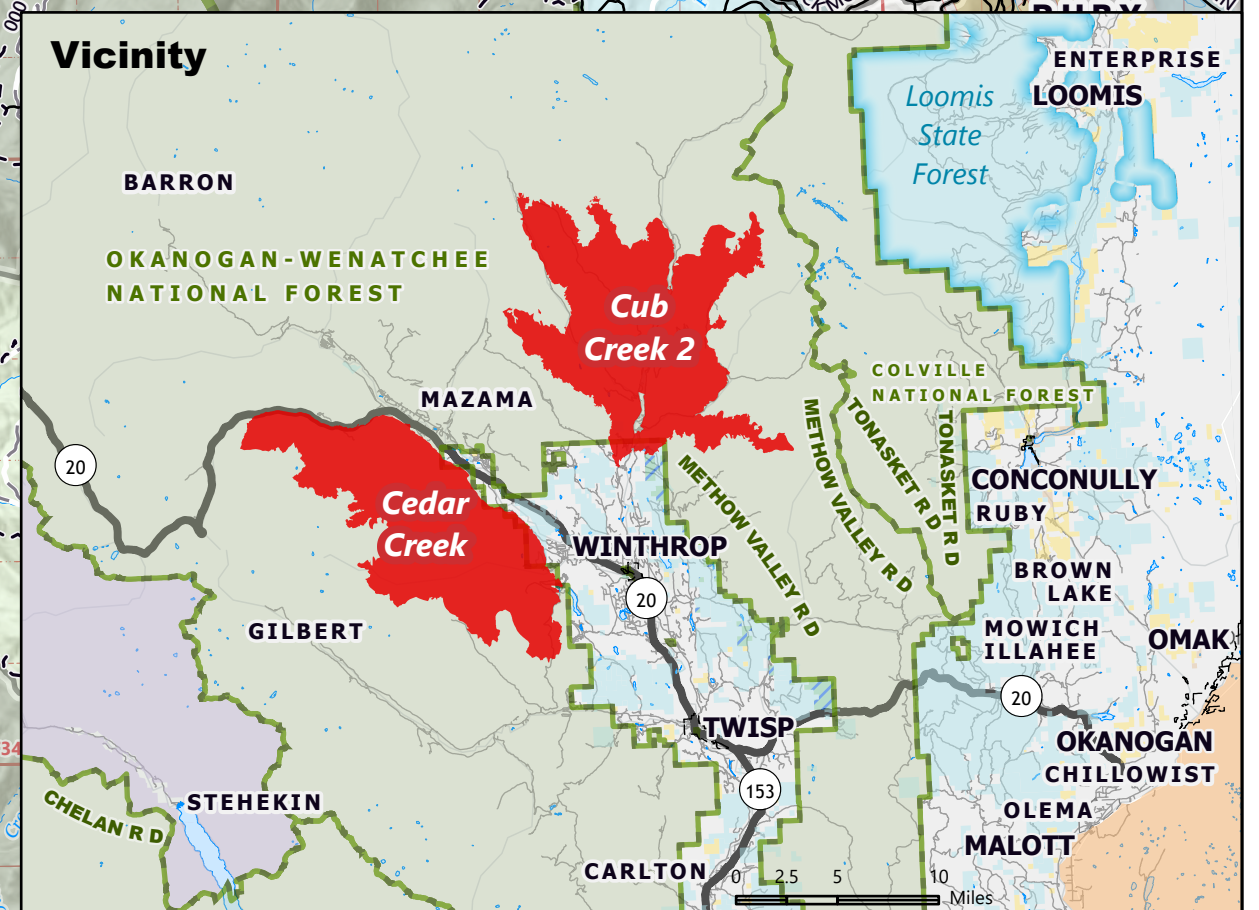
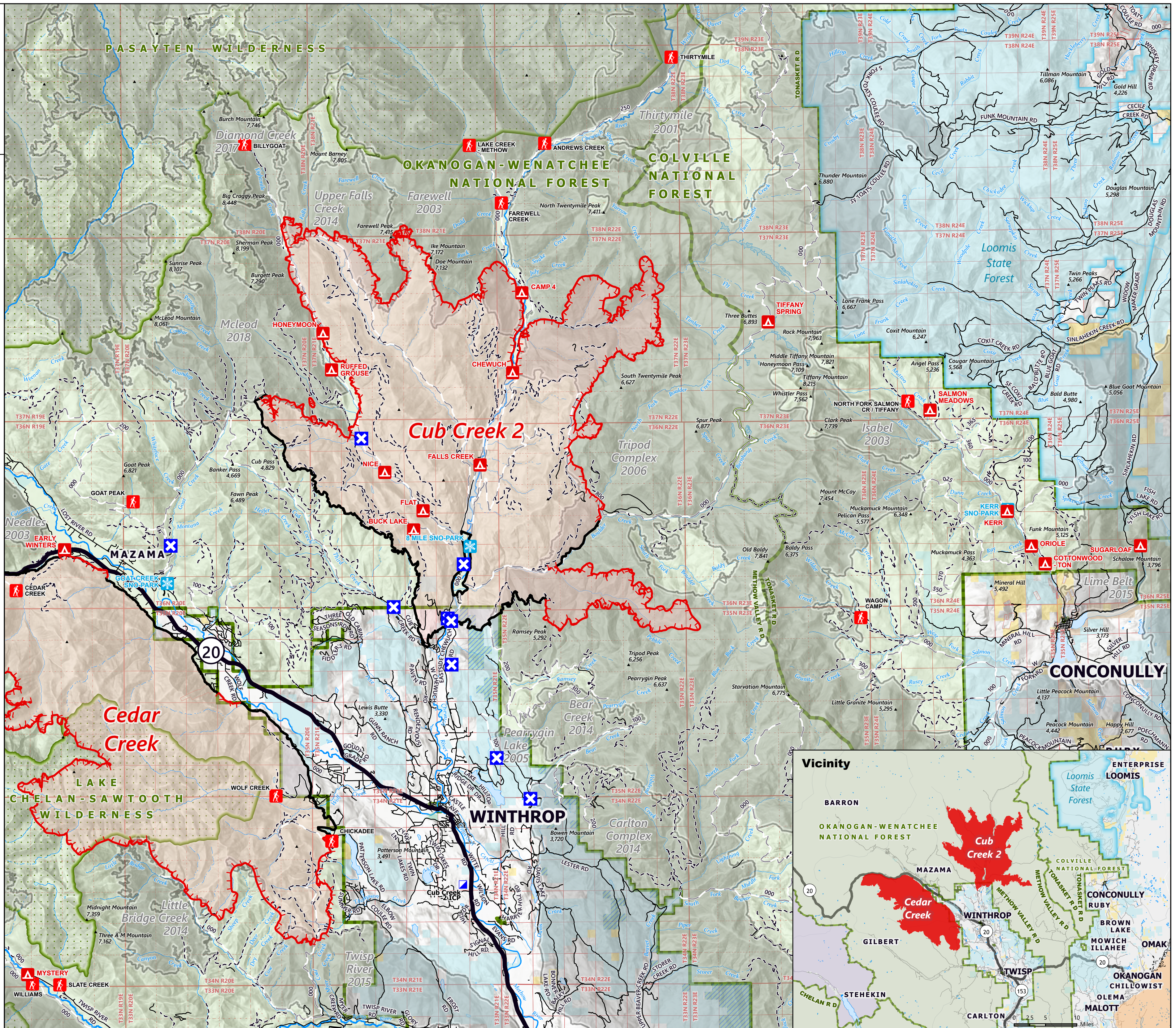


PUBLIC INFORMATION

Cub Creek 2
WA-NES-373
8/4/2021

58,697 acres at 8/03/2021, 1000 hrs

-  Incident Command Post
-  Closure
-  Fire Edge
-  Contained Line
-  Wildfire Daily Fire Perimeter
-  Fire History (2000 - Present, 200+ acres)
-  Highway
-  Paved Road
-  Gravel Road
-  Dirt Road
-  Ranger District Boundary
-  Wilderness Boundary
-  U.S. Fish and Wildlife Service
-  U.S. Fish and Wildlife Service (Managed by State)
-  Bureau of Land Management
-  Other Federal
-  State
-  Campground
-  Trailhead
-  Snowpark



1:120,000 - - 8/4/2021 0620
Acres from IR and GIS
North American 1983 Datum, LatLong Grid