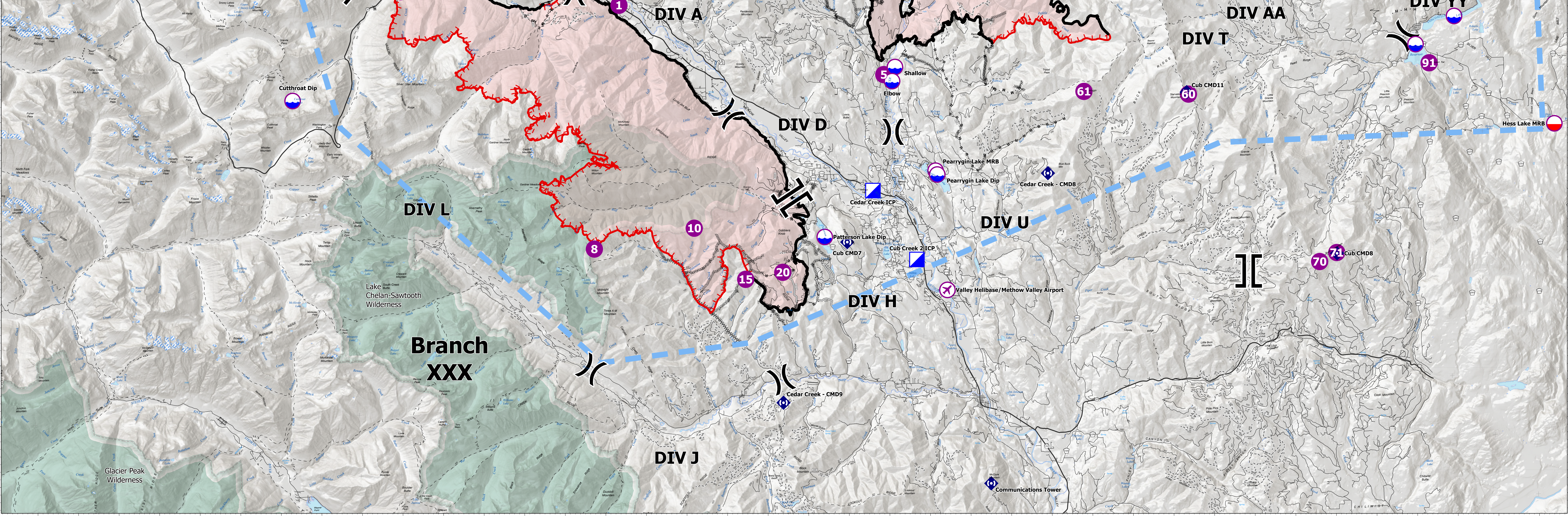
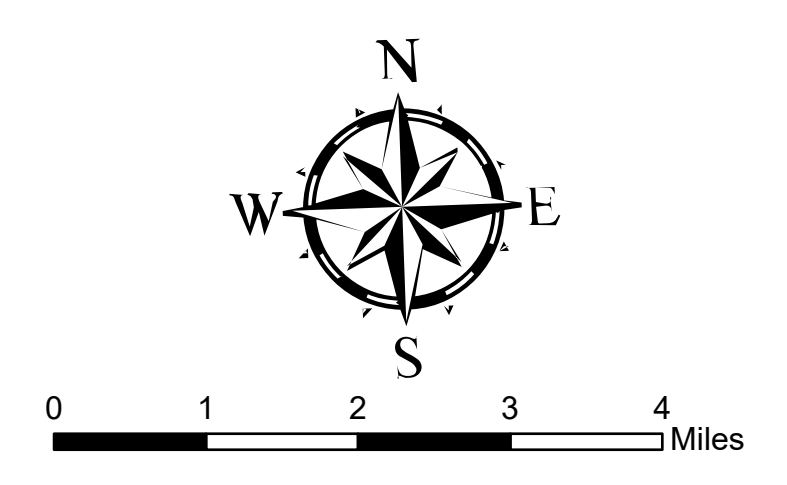


Incident Name	Feature Category	Label	Latitude	Longitude
Cedar Creek	Airstrip or Airport	Valley Helibase/Methow Valley Airport	48° 25.496' N	120° 08.754' W
Cedar Creek	Dip Site	Cutthroat Dip	48° 32.435' N	120° 40.828' W
Cedar Creek	Dip Site	Delancy	48° 36.612' N	120° 37.344' W
Cedar Creek	Dip Site	Free Stone	48° 35.740' N	120° 26.154' W
Cedar Creek	Dip Site	Patterson Lake Dip	48° 27.385' N	120° 14.721' W
Cedar Creek	Helispot	1	48° 35.238' N	120° 24.506' W
Cedar Creek	Helispot	2	48° 35.833' N	120° 26.949' W
Cedar Creek	Helispot	3	48° 38.807' N	120° 29.833' W
Cedar Creek	Helispot	4	48° 35.919' N	120° 35.306' W
Cedar Creek	Helispot	5	48° 37.990' N	120° 24.190' W
Cedar Creek	Helispot	8	48° 27.250' N	120° 26.130' W
Cedar Creek	Helispot	10	48° 27.824' N	120° 21.158' W
Cedar Creek	Helispot	15	48° 26.083' N	120° 18.703' W
Cedar Creek	Helispot	20	48° 26.272' N	120° 16.858' W
Cedar Creek	Incident Command Post	Cedar Creek ICP	48° 28.852' N	120° 12.256' W
Cedar Creek	Repeater	Cedar Creek - CMD7	48° 37.924' N	120° 24.224' W
Cedar Creek	Repeater	Cedar Creek - CMD8	48° 29.209' N	120° 03.569' W
Cedar Creek	Repeater	Cedar Creek - CMD9	48° 21.983' N	120° 17.050' W
Cedar Creek	Repeater	Communications Tower	48° 19.084' N	120° 06.947' W
Cub Creek 2	Aerial Hazard		48° 42.013' N	120° 08.006' W
Cub Creek 2	Airstrip or Airport	Valley Helibase/Methow Valley Airport	48° 25.496' N	120° 08.754' W
Cub Creek 2	Dip Site	Buck Lake	48° 36.262' N	120° 12.061' W
Cub Creek 2	Dip Site	Elbow	48° 32.427' N	120° 11.109' W
Cub Creek 2	Dip Site	Pearrygin Lake Dip	48° 29.302' N	120° 09.044' W
Cub Creek 2	Dip Site	Roger Lake	48° 39.005' N	119° 58.139' W
Cub Creek 2	Dip Site	Shallow	48° 32.888' N	120° 10.941' W
Cub Creek 2	Dip Site	Shallow	48° 32.960' N	119° 45.123' W
Cub Creek 2	Dip Site	Shallow	48° 33.832' N	119° 43.157' W
Cub Creek 2	Helibase	Eightmile Ranch Helibase	48° 35.960' N	120° 10.020' W
Cub Creek 2	Helispot	5	48° 32.652' N	120° 11.508' W
Cub Creek 2	Helispot	6	48° 36.247' N	120° 13.185' W
Cub Creek 2	Helispot	27	48° 25.860' N	119° 50.550' W
Cub Creek 2	Helispot	30	48° 45.050' N	120° 04.081' W
Cub Creek 2	Helispot	31	48° 37.880' N	120° 16.171' W
Cub Creek 2	Helispot	32	48° 39.170' N	120° 18.421' W
Cub Creek 2	Helispot	37	48° 36.374' N	120° 04.573' W
Cub Creek 2	Helispot	51	48° 41.156' N	119° 58.413' W
Cub Creek 2	Helispot	52	48° 42.525' N	119° 57.417' W
Cub Creek 2	Helispot	53	48° 42.798' N	119° 55.174' W
Cub Creek 2	Helispot	54	48° 44.820' N	119° 55.377' W
Cub Creek 2	Helispot	55	48° 47.316' N	119° 57.062' W
Cub Creek 2	Helispot	56	48° 40.170' N	119° 55.960' W
Cub Creek 2	Helispot	60	48° 31.626' N	119° 56.464' W
Cub Creek 2	Helispot	61	48° 31.859' N	120° 01.631' W
Cub Creek 2	Helispot	70	48° 25.947' N	119° 50.313' W
Cub Creek 2	Helispot	71	48° 26.221' N	119° 49.513' W
Cub Creek 2	Helispot	91	48° 32.328' N	119° 44.490' W
Cub Creek 2	Helispot	92	48° 39.468' N	119° 50.387' W
Cub Creek 2	Helispot	93	48° 36.576' N	119° 50.298' W
Cub Creek 2	Helispot	94	48° 35.580' N	119° 49.534' W
Cub Creek 2	Incident Command Post	Cub Creek 2 ICP	48° 26.535' N	120° 10.206' W
Cub Creek 2	Mobile Retardant Base	Hess Lake MRB	48° 30.160' N	119° 38.424' W
Cub Creek 2	Mobile Retardant Base	Pearrygin Lake MRB	48° 29.430' N	120° 09.121' W
Cub Creek 2	Repeater	Cub CMD7	48° 27.189' N	120° 13.618' W
Cub Creek 2	Repeater	Cub CMD8	48° 26.195' N	119° 49.436' W
Cub Creek 2	Repeater	Cub CMD9	48° 37.146' N	120° 06.556' W
Cub Creek 2	Repeater	Cub CMD10	48° 40.170' N	119° 55.950' W
Cub Creek 2	Repeater	Cub CMD11	48° 31.693' N	119° 56.546' W



**AirOps**  
**Cedar Creek** WA-OWF-000320  
 Fire Perimeter Acres as of 2021-08-09  
 Cedar Creek - 52,889  
 Delancy - 223

**Cub Creek 2** WA-NES-000373  
 Fire Perimeter Acres as of 2021-08-09  
 Cub Creek 2 - 62,489  
 Muckamuck - 1,179



- Aerial Hazard
- Airstrip or Airport
- Dip Site
- Mobile Retardant Base

- Helispot
- Helibase
- Division Break
- Branch Break

- Incident Command Post
- Repeater
- Completed Dozer Line
- Completed Fuel Break

- Completed Hand Line
- Completed Mixed Construction Line
- Completed Road as Line
- Access or Improved Road
- Other
- Temporary Flight Restriction
- Fire Edge
- Contained Line

- Wildfire Daily Fire Perimeter
- Wilderness
- Highway
- Open FS Roads
- Closed FS Roads
- Trails