

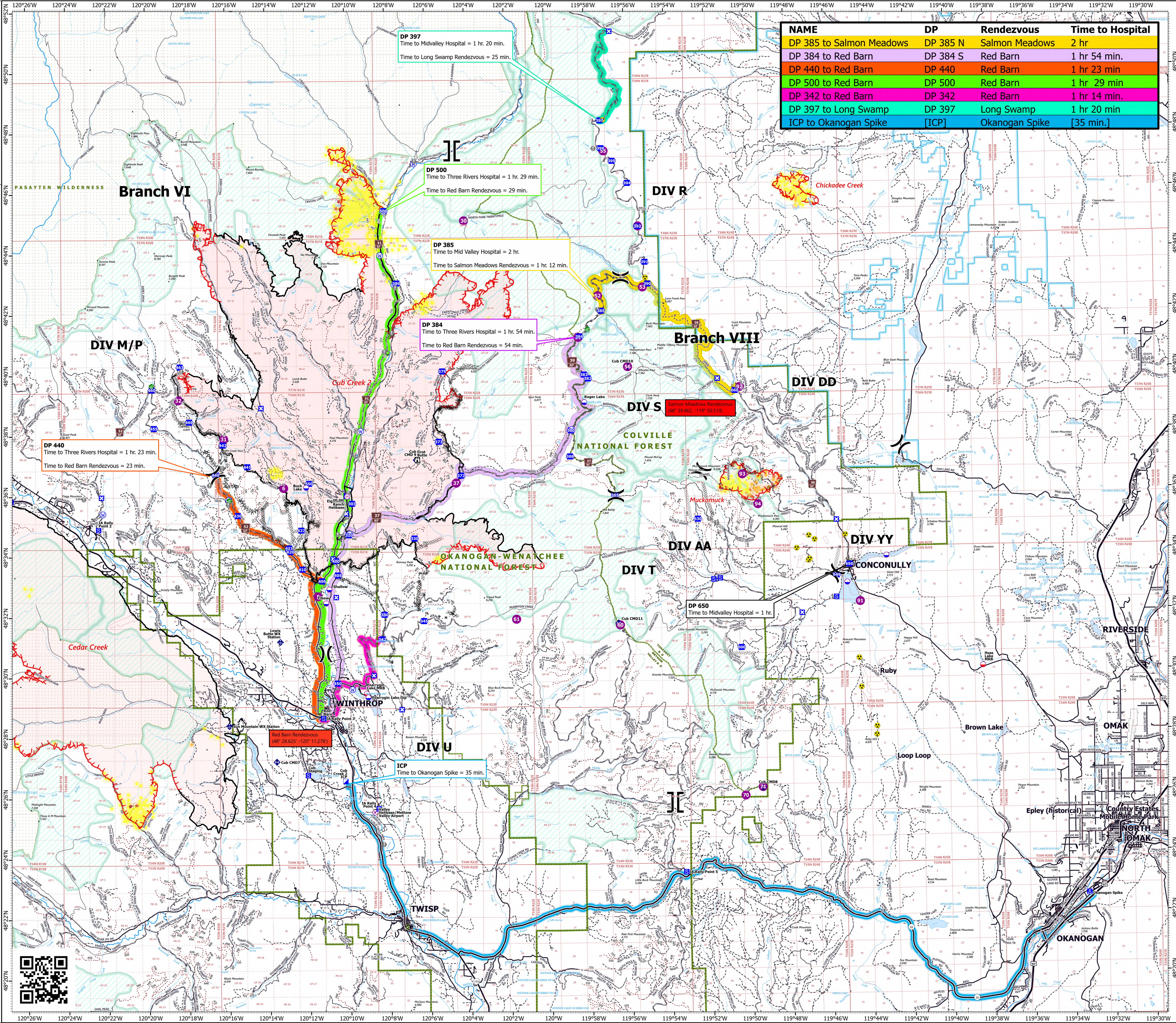
# MEDICAL EVACUATION

8/11/2021  
 Cub Creek 2  
 WA-NES-373  
 62,489 acres on 8/9/2021, 1300 hrs  
 Muckamuck  
 WA-COF-2290  
 1,179 acres on 8/10/2021, 1100 hrs

NAME	DP	Rendezvous	Time to Hospital
DP 385 to Salmon Meadows	DP 385 N	Salmon Meadows	2 hr
DP 384 to Red Barn	DP 384 S	Red Barn	1 hr 54 min.
DP 440 to Red Barn	DP 440	Red Barn	1 hr 23 min
DP 500 to Red Barn	DP 500	Red Barn	1 hr 29 min
DP 342 to Red Barn	DP 342	Red Barn	1 hr 14 min.
DP 397 to Long Swamp	DP 397	Long Swamp	1 hr 20 min
ICP to Okanogan Spike	[ICP]	Okanogan Spike	[35 min.]

## Medical Evacuation Routes

- DP 342
- DP 384 S
- DP 385 N
- DP 440
- DP 500
- DP 397
- [ICP]
- Airstrip or Airport
- Dip Site
- Mobile Retardant Base
- Hellspot
- Hellbase
- Division Break
- Branch Break
- Incident Command Post
- Drop Point
- Closure
- Camp
- Staging Area
- Lookout
- Value at Risk
- Landmark
- Gate
- Water Development or Draft Site
- Mobile Weather Unit
- Repeater
- Hazard
- Water Source
- Completed Dozer Line
- Completed Fuel Break
- Completed Hand Line
- Completed Mixed Construction Line
- Completed Road as Line
- Planned Dozer Line
- Planned Hand Line
- Planned Road as Line
- Other
- Fire Edge
- Contained Line
- Wildfire Daily Fire Perimeter
- Gap; Summit
- FS Wilderness Boundary
- Roadless Area
- Ranger District Boundary
- Highway
- Paved Road
- Gravel Road
- Dirt Road
- Closed Road
- Trail
- Railroad
- VIIRS Centroid
- 0 to 6 hours
- 6 to 12 hours
- 12 to 24 hours
- 24 to 48 hours
- over 48 hours
- VIIRS Footprint
- 0 to 6 hours
- 6 to 12 hours
- 12 to 24 hours
- 24 to 48 hours
- over 48 hours



DP 440  
 Time to Three Rivers Hospital = 1 hr. 23 min.  
 Time to Red Barn Rendezvous = 23 min.

DP 397  
 Time to Midvalley Hospital = 1 hr. 20 min.  
 Time to Long Swamp Rendezvous = 25 min.

DP 500  
 Time to Three Rivers Hospital = 1 hr. 29 min.  
 Time to Red Barn Rendezvous = 29 min.

DP 385  
 Time to Mid Valley Hospital = 2 hr.  
 Time to Salmon Meadows Rendezvous = 1 hr. 12 min.

DP 384  
 Time to Three Rivers Hospital = 1 hr. 54 min.  
 Time to Red Barn Rendezvous = 54 min.

DP 650  
 Time to Midvalley Hospital = 1 hr.

ICP  
 Time to Okanogan Spike = 35 min.

Red Barn Rendezvous  
 (48° 28.625 - 120° 11.278)

