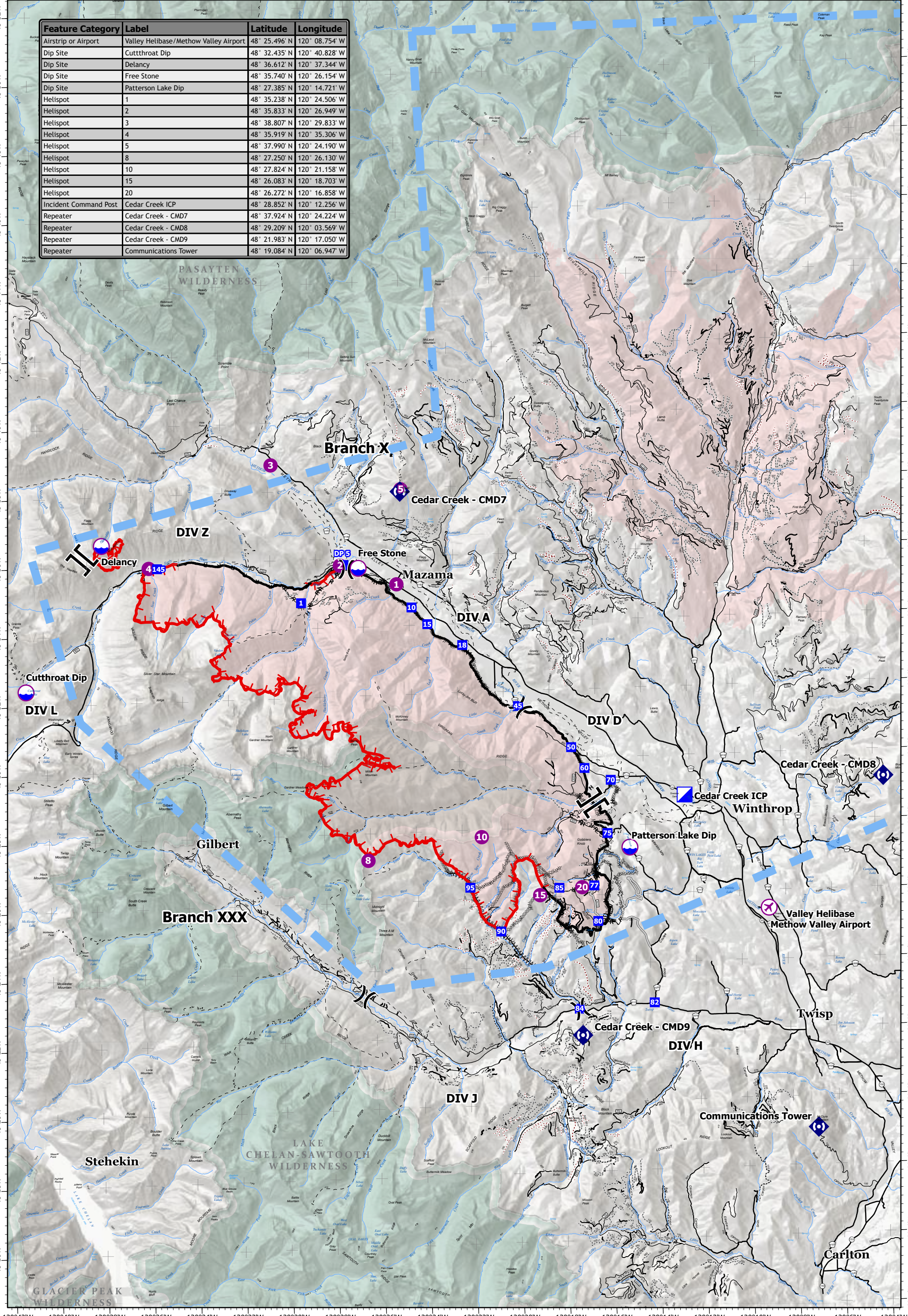


Feature Category	Label	Latitude	Longitude
Airstrip or Airport	Valley Helibase/Methow Valley Airport	48° 25.496' N	120° 08.754' W
Dip Site	Cutthroat Dip	48° 32.435' N	120° 40.828' W
Dip Site	Delancy	48° 36.612' N	120° 37.344' W
Dip Site	Free Stone	48° 35.740' N	120° 26.154' W
Dip Site	Patterson Lake Dip	48° 27.385' N	120° 14.721' W
Helispot	1	48° 35.238' N	120° 24.506' W
Helispot	2	48° 35.833' N	120° 26.949' W
Helispot	3	48° 38.807' N	120° 29.833' W
Helispot	4	48° 35.919' N	120° 35.306' W
Helispot	5	48° 37.990' N	120° 24.190' W
Helispot	8	48° 27.250' N	120° 26.130' W
Helispot	10	48° 27.824' N	120° 21.158' W
Helispot	15	48° 26.083' N	120° 18.703' W
Helispot	20	48° 26.272' N	120° 16.858' W
Incident Command Post	Cedar Creek ICP	48° 28.852' N	120° 12.256' W
Repeater	Cedar Creek - CMD7	48° 37.924' N	120° 24.224' W
Repeater	Cedar Creek - CMD8	48° 29.209' N	120° 03.569' W
Repeater	Cedar Creek - CMD9	48° 21.983' N	120° 17.050' W
Repeater	Communications Tower	48° 19.084' N	120° 06.947' W



Pilot Cedar Creek

WA-OWF-000320
 Fire Perimeter Acres as of 2021-08-09
 Cedar Creek - 52,889
 Delancy - 223

Map Updated: 8/10/2021 @ 2053

- Airstrip or Airport
- Incident Command Post
- Completed Hand Line
- Contained Line
- Closed FS Roads
- Dip Site
- Drop Point
- Completed Mixed Construction Line
- Temporary Flight Restriction
- Road Core Decom
- Helispot
- Repeater
- Completed Road as Line
- Wildfire Daily Fire Perimeter
- Trails
- Division Break
- Completed Dozer Line
- Access or Improved Road
- Wilderness
- Branch Break
- Completed Fuel Break
- Highways
- Open FS Roads
- Fire Edge

0 1 2 3 4 Miles