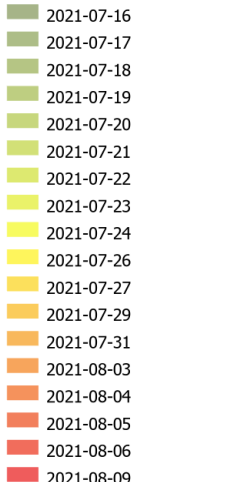


PROGRESSION

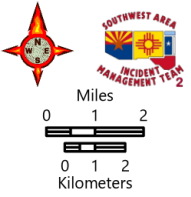
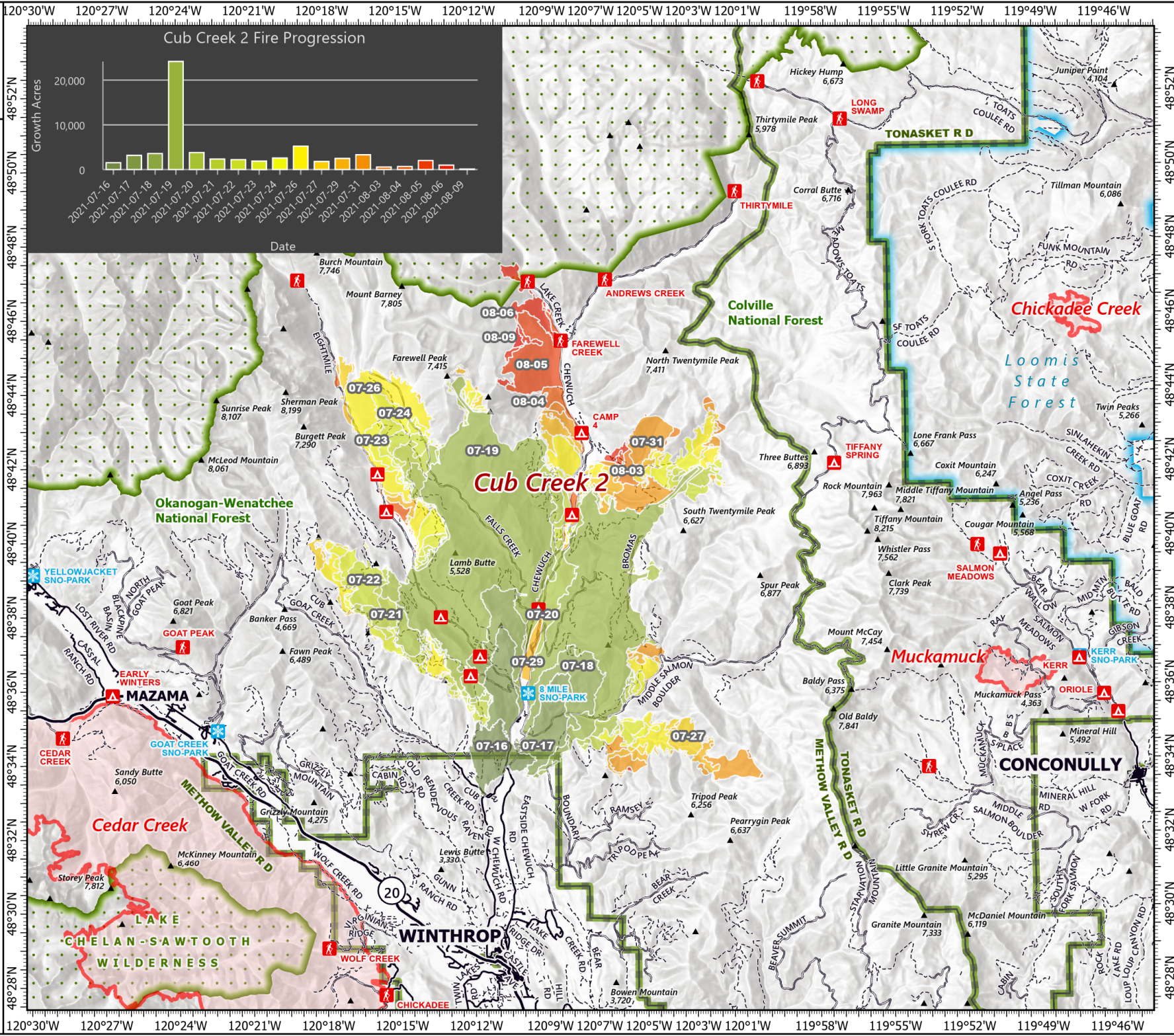
8/11/2021
Cub Creek 2
WA-NES-373

62,489 acres at 8/9/2021, 1300 hrs

Cub Creek 2 Fire Progression



- 2021-07-16
- 2021-07-17
- 2021-07-18
- 2021-07-19
- 2021-07-20
- 2021-07-21
- 2021-07-22
- 2021-07-23
- 2021-07-24
- 2021-07-26
- 2021-07-27
- 2021-07-29
- 2021-07-31
- 2021-08-03
- 2021-08-04
- 2021-08-05
- 2021-08-06
- 2021-08-09
- Campground
- Trailhead
- Snowpark
- National Forest Boundary
- Wilderness Boundary
- Ranger District Boundary
- Loomis State Forest Boundary
- Highway
- Paved Road
- Gravel Road
- Dirt Road



1:250,000 - SWANMT2 GIS
8/11/2021 06:12
Acres from IR and GIS
North American 1983 Datum, Lat/Long Grid