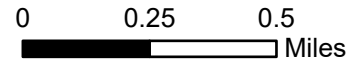


IAP Map Book

Dry Gulch Fire
 WASES-020655
 07/12/2021 Day

46,948 acres



	1	2	3
4	5	6	7
8	9	10	11
12	13	14	15

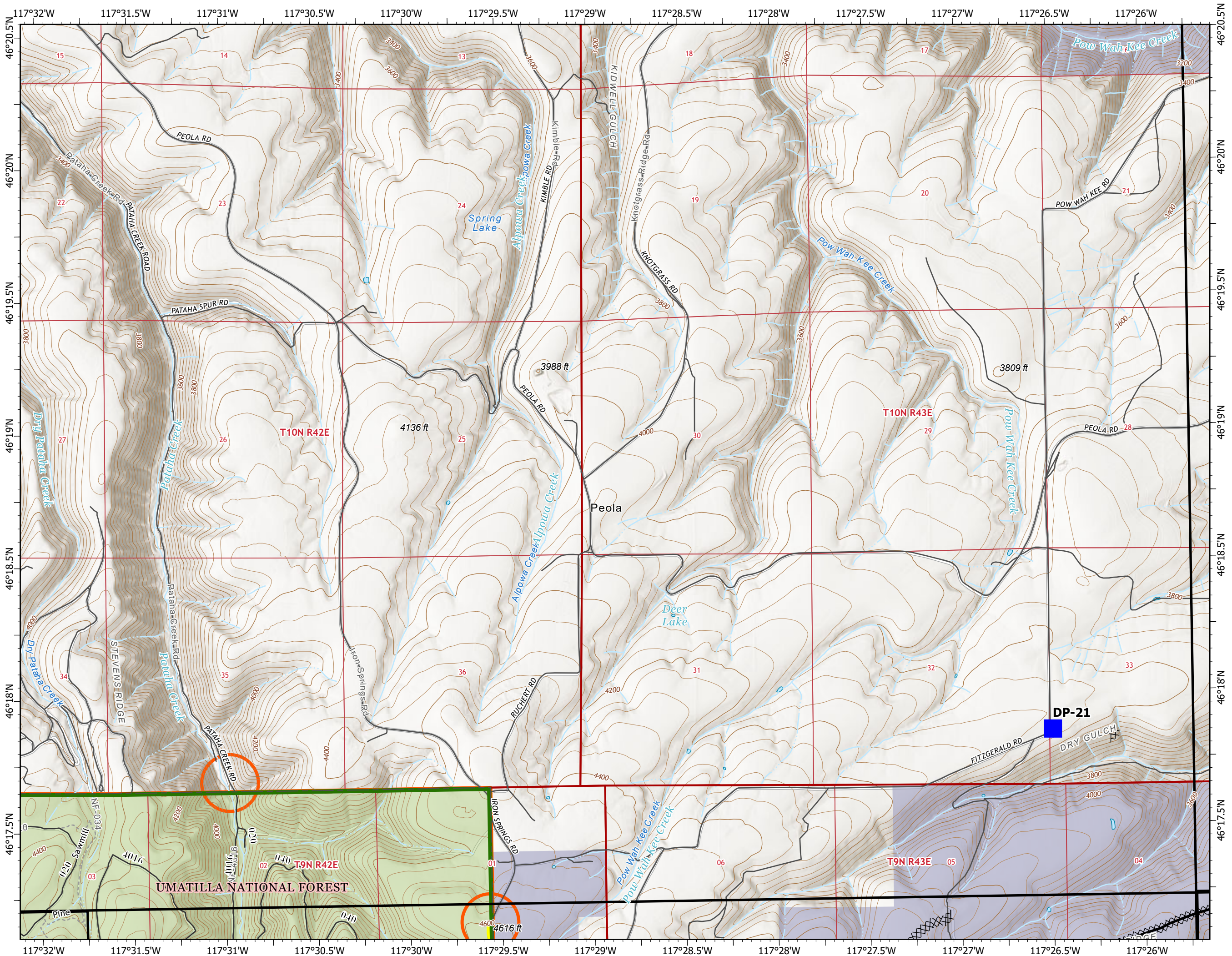
Page 1 of 15

Logistics

- Drop Point
- Ops Completed**
- ⊗ Completed Dozer Line
- Fire Perimeter**
- Contained Line
- USFS Road Closures
- Roads
- USFS Road Closures
- ▭ USFS Fire Closure Area



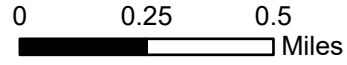
7/11/2021 2123
 Acres from IR and GPS
 North American 1983 Datum,
 LatLong Grid



IAP Map Book

Dry Gulch Fire
WASES-020655
07/12/2021 Day

46,948 acres



	1	2	3
4	5	6	7
8	9	10	11
12	13	14	15

Page 3 of 15

Assignment Breaks

) Division Break

Ops Completed

⊗ Completed Dozer Line

Fire Perimeter

┌ Fire Edge

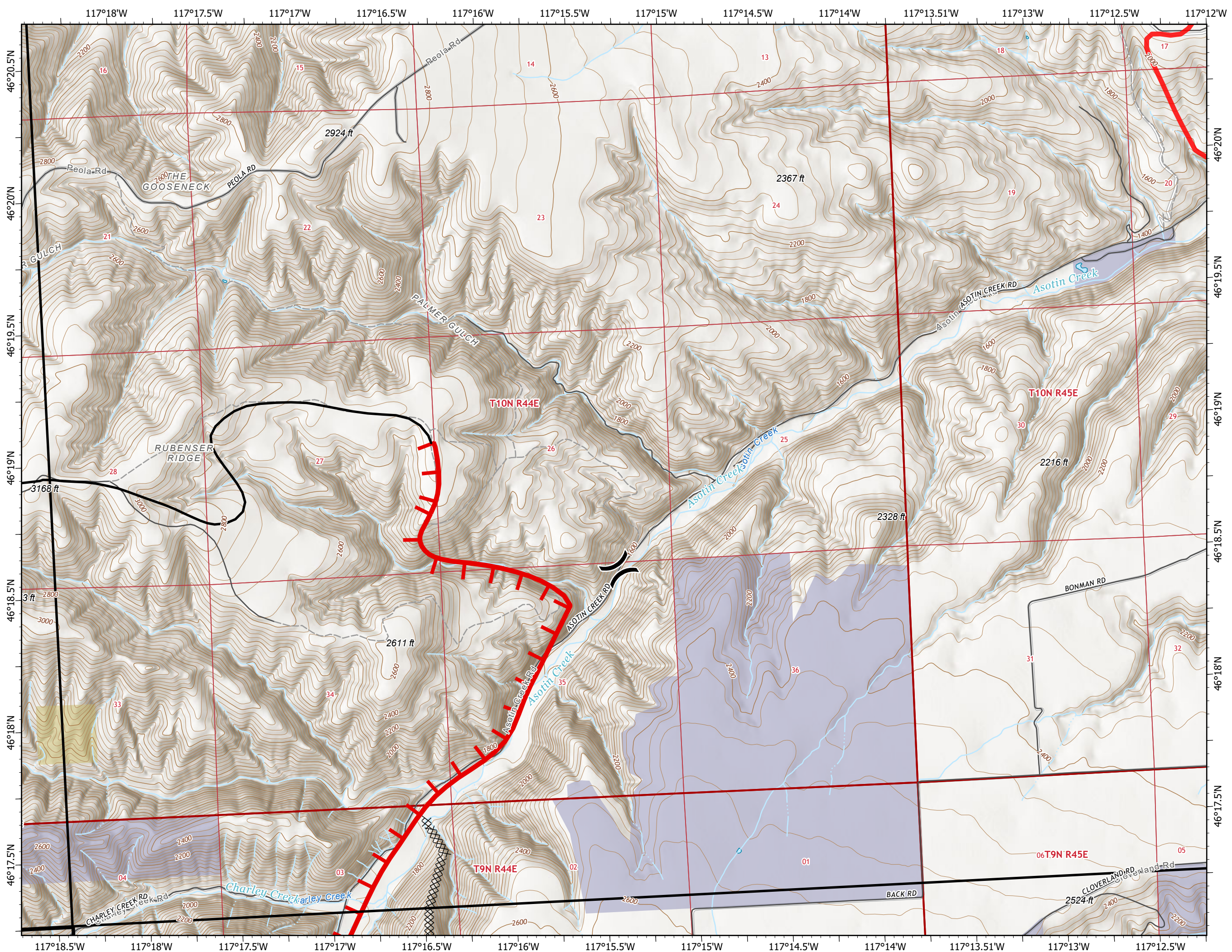
— Contained Line

○ USFS Road Closures

▭ USFS Fire Closure Area



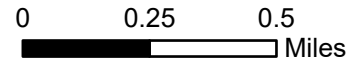
7/11/2021 2123
Acres from IR and GPS
North American 1983 Datum,
LatLong Grid



IAP Map Book

Dry Gulch Fire
 WASES-020655
 07/12/2021 Day

46,948 acres



	1	2	3
4	5	6	7
8	9	10	11
12	13	14	15

Page 4 of 15

Logistics

Drop Point

Air Ops

Temporary Flight Restriction

USFS Road Closures

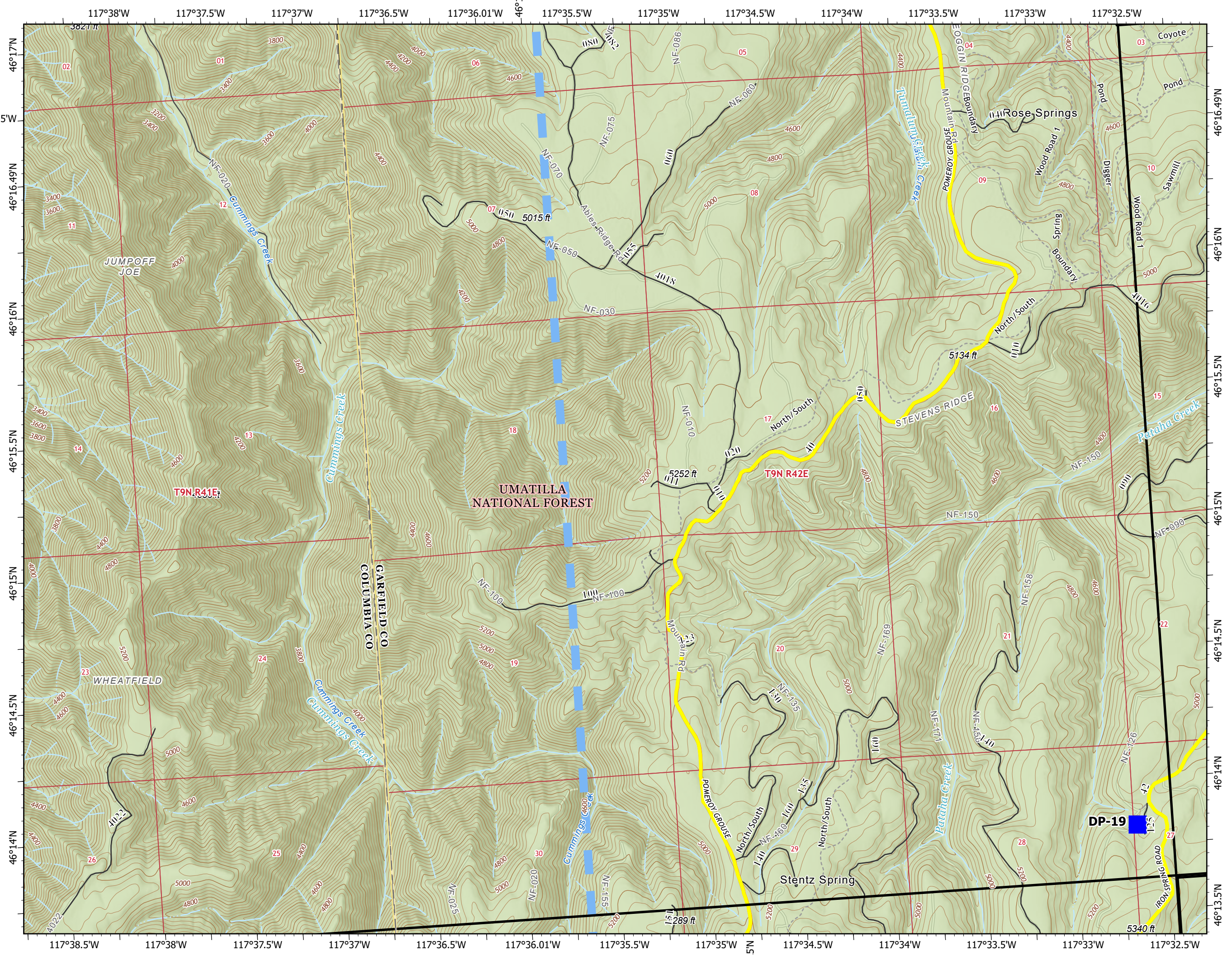
Roads

USFS Road Closures

USFS Fire Closure Area



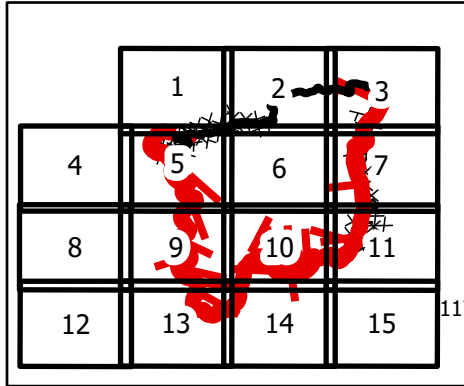
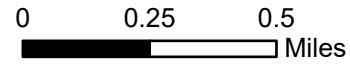
7/11/2021 2123
 Acres from IR and GPS
 North American 1983 Datum.
 LatLong Grid



IAP Map Book

Dry Gulch Fire
 WASES-020655
 07/12/2021 Day

46,948 acres



Page 5 of 15

Air Operations

● Helispot

Logistics

■ Drop Point

Repair

⊕ Fence - Cut/Damaged

Communications

⊕ Mobile Weather Unit

⊕ Repeater

Ops Completed

⊗ Completed Dozer Line

Fire Perimeter

┃ Fire Edge

— Contained Line

— USFS Road Closures

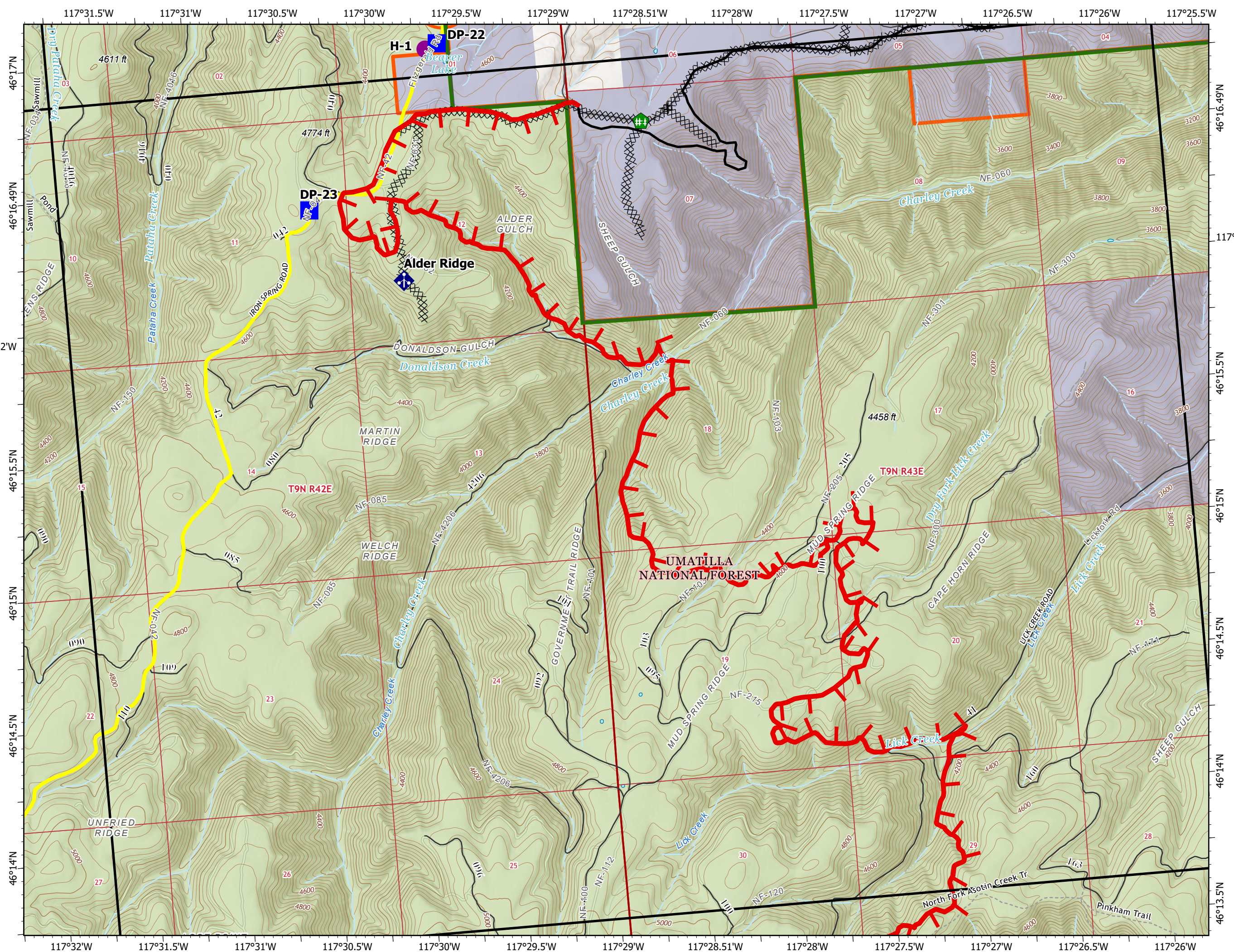
— Roads

○ USFS Road Closures

▭ USFS Fire Closure Area



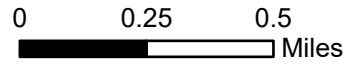
7/11/2021 2123
 Acres from IR and GPS
 North American 1983 Datum,
 LatLong Grid



IAP Map Book

Dry Gulch Fire
WASES-020655
07/12/2021 Day

46,948 acres



	1	2	3
4	5	6	7
8	9	10	11
12	13	14	15

Page 6 of 15

Assignment Breaks

(X) Division Break

Logistics

■ Drop Point

Communications

◆ Repeater

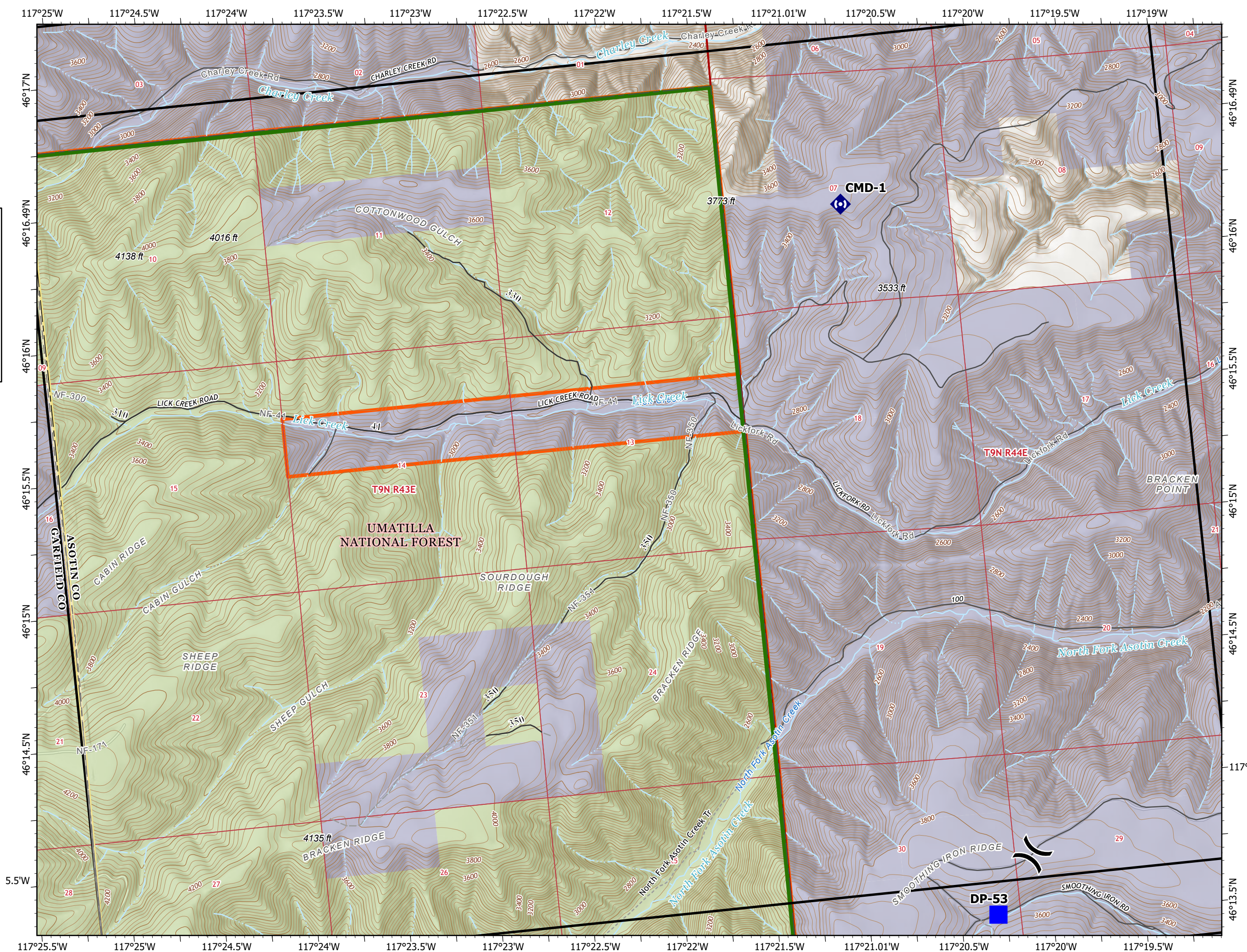
— Roads

○ USFS Road Closures

▭ USFS Fire Closure Area



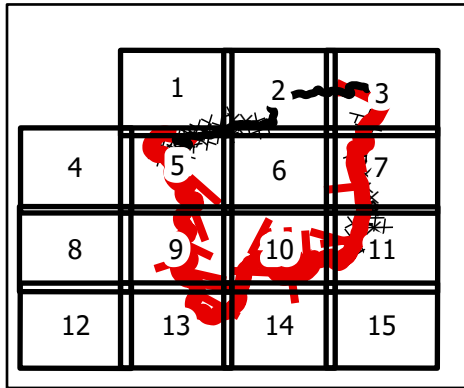
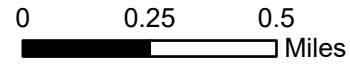
7/11/2021 2124
Acres from IR and GPS
North American 1983 Datum.
LatLong Grid



IAP Map Book

Dry Gulch Fire
 WASES-020655
 07/12/2021 Day

46,948 acres



Page 7 of 15

Logistics

■ Drop Point

Communications

Ⓜ Repeater

Ops Completed

⊗ Completed Dozer Line

H Completed Hand Line

P Completed Plow Line

Fire Perimeter

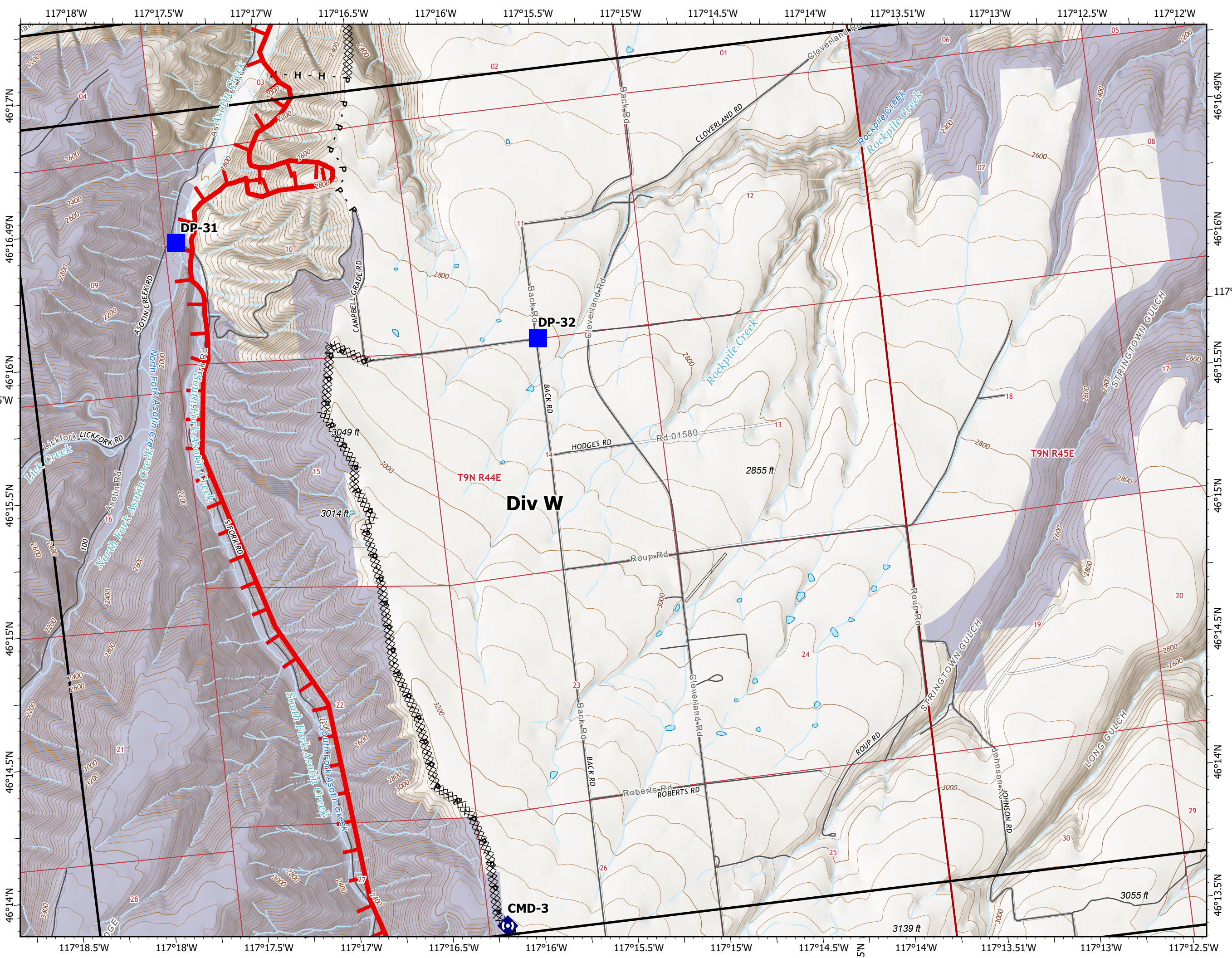
▬ Fire Edge

○ USFS Road Closures

▭ USFS Fire Closure Area



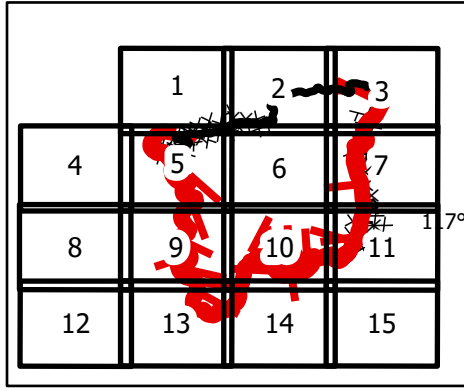
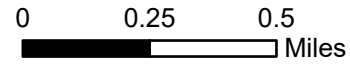
7/11/2021 2124
 Acres from IR and GPS
 North American 1983 Datum.
 LatLong Grid



IAP Map Book

Dry Gulch Fire
WASES-020655
07/12/2021 Day

46,948 acres



Page 8 of 15

Air Operations

● Helispot

Assignment Breaks

) (Division Break

Logistics

■ Drop Point

Water

⊙ Water Source

Air Ops

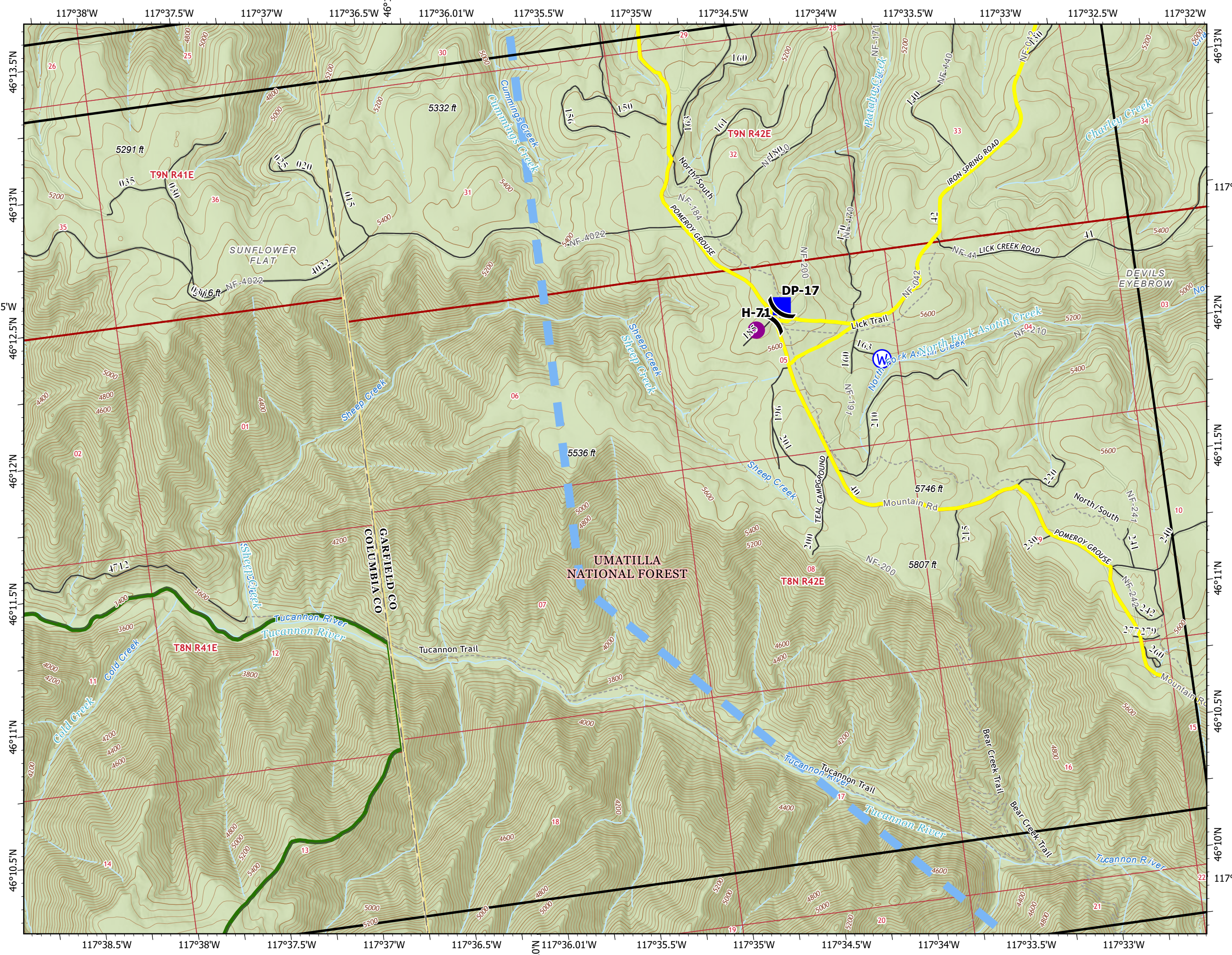
■ Temporary Flight Restriction

— USFS Road Closures

— Roads

○ USFS Road Closures

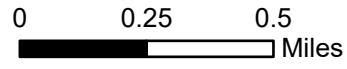
▭ USFS Fire Closure Area



IAP Map Book

Dry Gulch Fire
WASES-020655
07/12/2021 Day

46,948 acres



	1	2	3
4	5	6	7
8	9	10	11
12	13	14	15

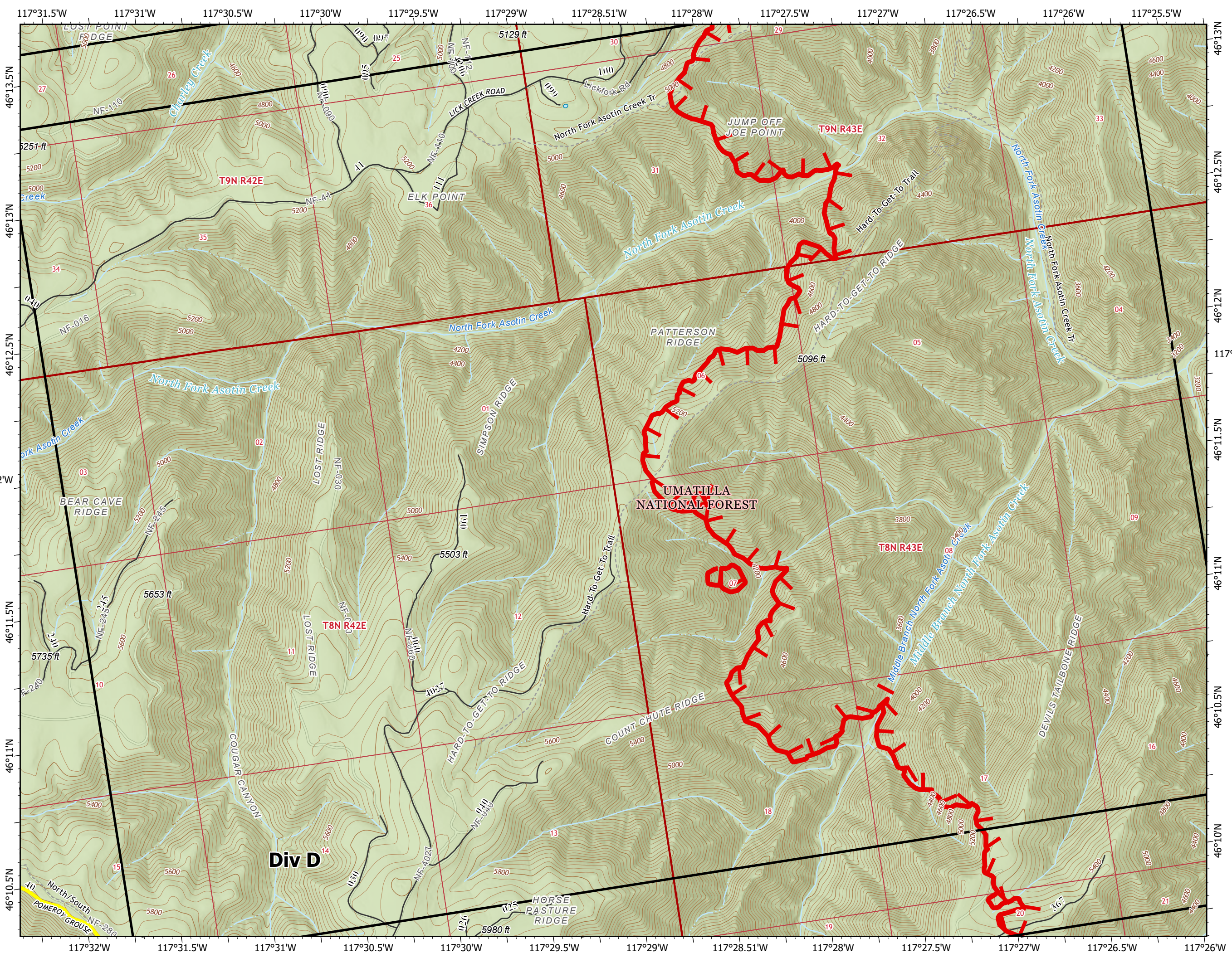
Page 9 of 15

Fire Perimeter

- Fire Edge
- USFS Road Closures
- Roads
- USFS Road Closures
- USFS Fire Closure Area



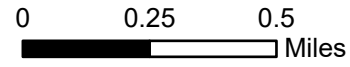
7/11/2021 2124
Acres from IR and GPS
North American 1983 Datum.
LatLong Grid



IAP Map Book

Dry Gulch Fire
WASES-020655
07/12/2021 Day

46,948 acres



	1	2	3
4	5	6	7
8	9	10	11
12	13	14	15

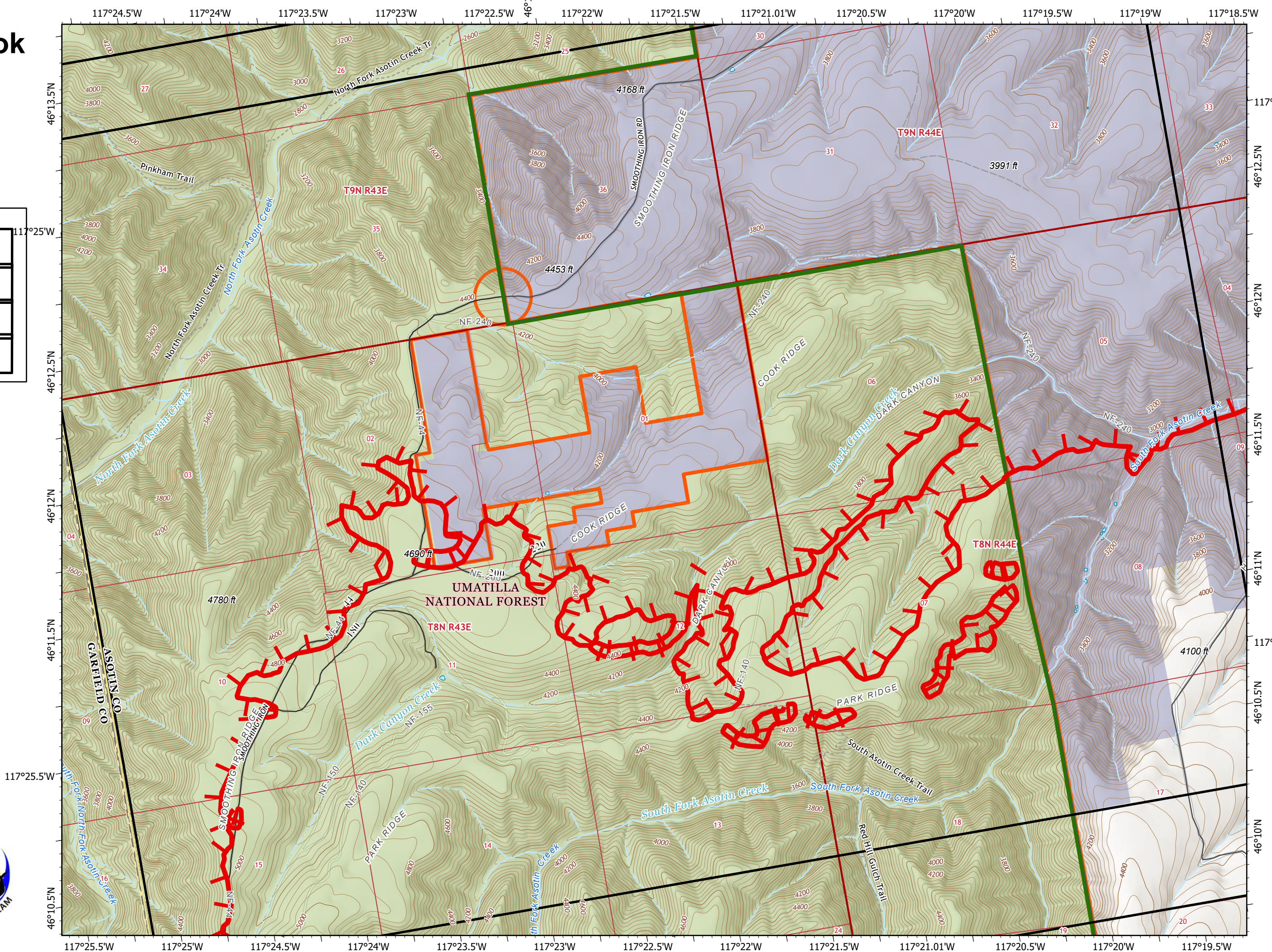
Page 10 of 15

Fire Perimeter

- Fire Edge
- Roads
- USFS Road Closures
- USFS Fire Closure Area



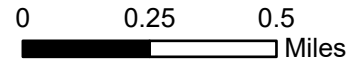
7/11/2021 2124
Acres from IR and GPS
North American 1983 Datum.
LatLong Grid



IAP Map Book

Dry Gulch Fire
 WASES-020655
 07/12/2021 Day

46,948 acres



	1	2	3
4	5	6	7
8	9	10	11
12	13	14	15

Page 11 of 15

Logistics

■ Drop Point

Ops Completed

⊗ Completed Dozer Line

P Completed Plow Line

Fire Perimeter

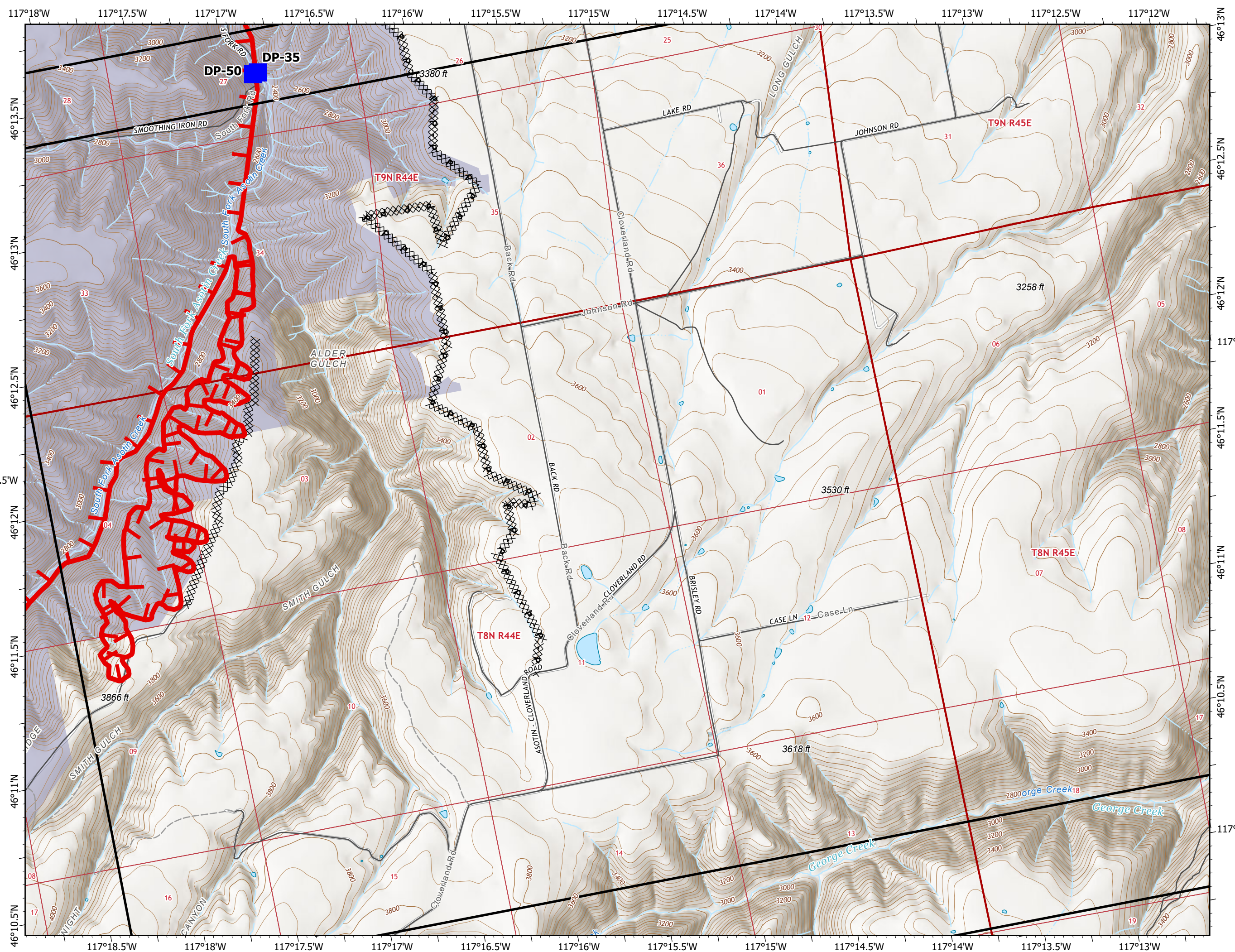
▬ Fire Edge

○ USFS Road Closures

▭ USFS Fire Closure Area



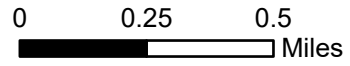
7/11/2021 2125
 Acres from IR and GPS
 North American 1983 Datum,
 LatLong Grid



IAP Map Book

Dry Gulch Fire
WASES-020655
07/12/2021 Day

46,948 acres

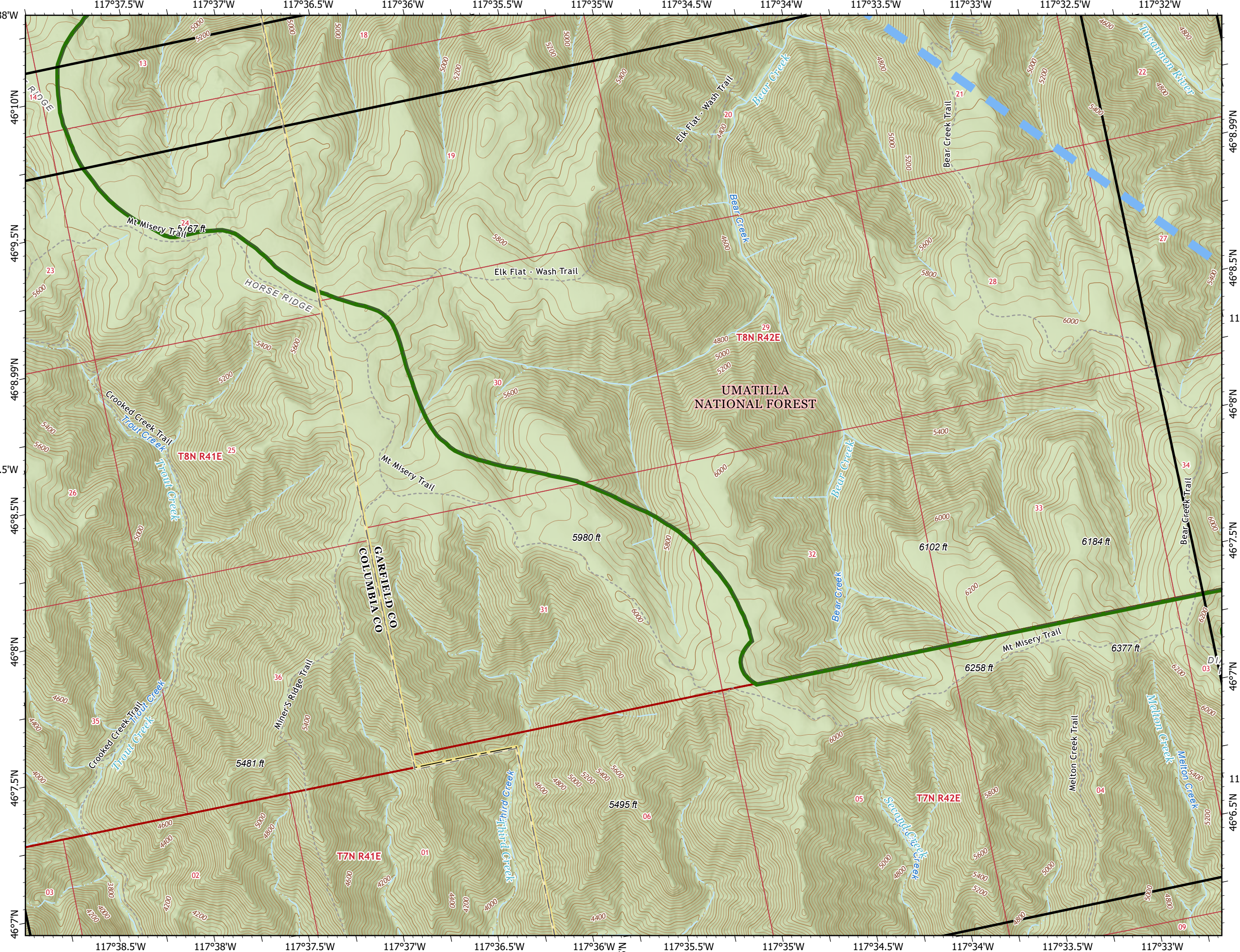


	1	2	3
4	5	6	7
8	9	10	11
12	13	14	15

Page 12 of 15

Air Ops

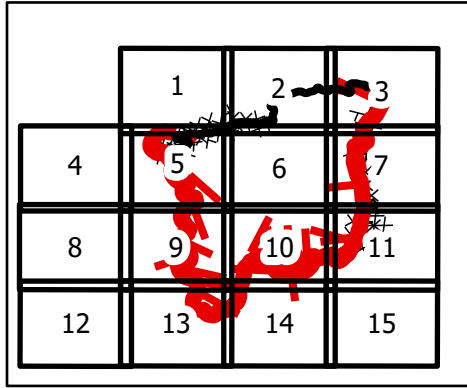
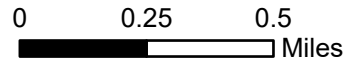
- Temporary Flight Restriction
- USFS Road Closures
- USFS Fire Closure Area



IAP Map Book

Dry Gulch Fire
 WASES-020655
 07/12/2021 Day

46,948 acres



Page 13 of 15

Assignment Breaks

(X) Division Break

Logistics

Drop Point

Air Ops

Temporary Flight Restriction

Fire Perimeter

Fire Edge

USFS Road Closures

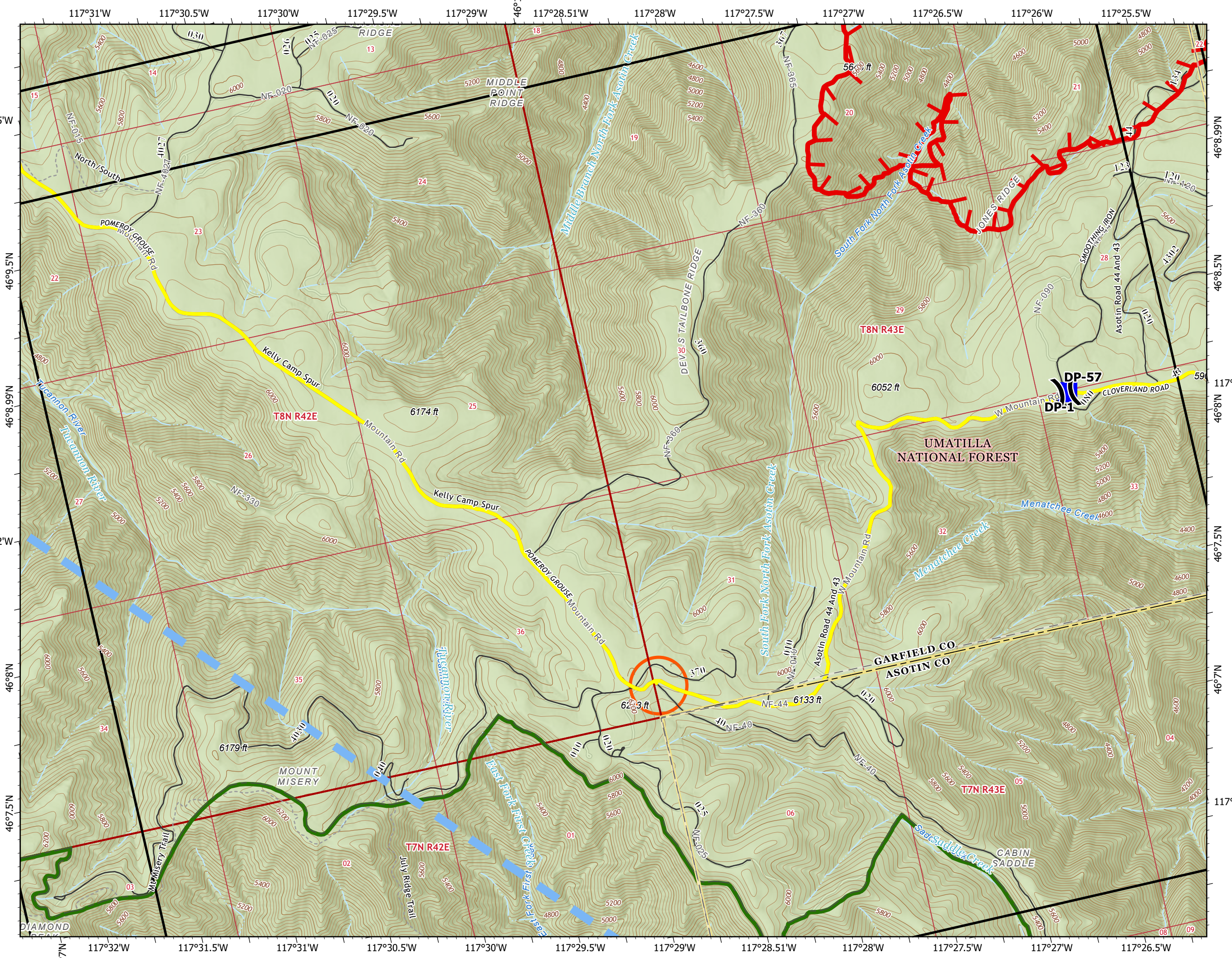
Roads

USFS Road Closures

USFS Fire Closure Area



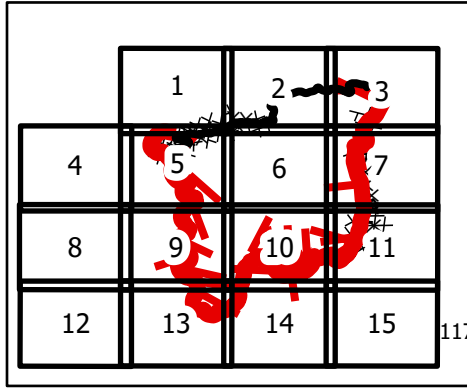
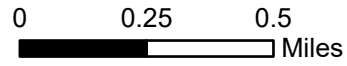
7/11/2021 2125
 Acres from IR and GPS
 North American 1983 Datum.
 Lat/Long Grid



IAP Map Book

Dry Gulch Fire
WASES-020655
07/12/2021 Day

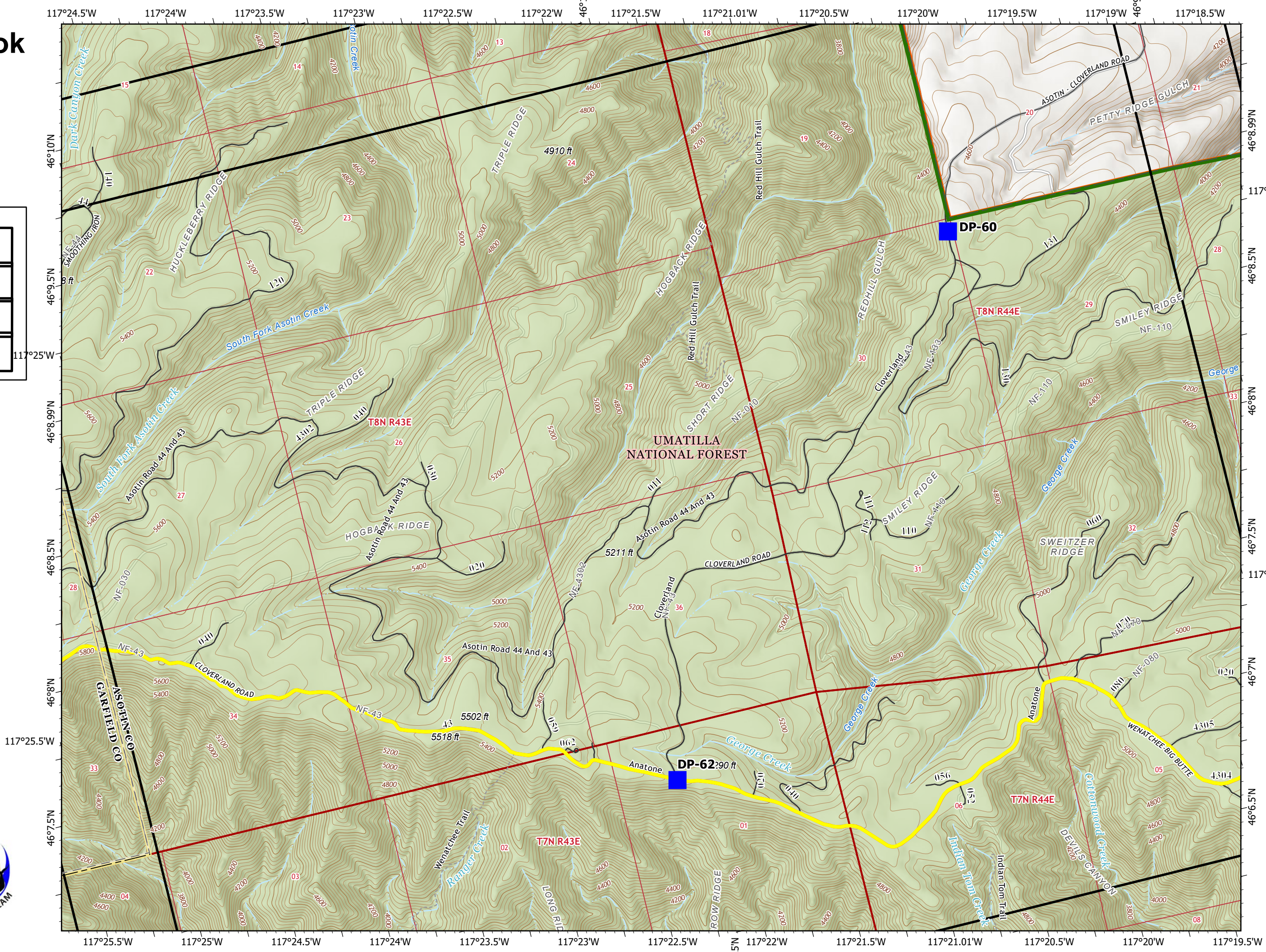
46,948 acres



Page 14 of 15

Logistics

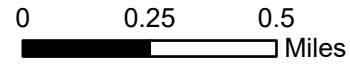
- Drop Point
- USFS Road Closures
- Roads
- USFS Road Closures
- USFS Fire Closure Area



IAP Map Book

Dry Gulch Fire
 WASES-020655
 07/12/2021 Day

46,948 acres



	1	2	3
4	5	6	7
8	9	10	11
12	13	14	15

Page 15 of 15

Reference

Value at Risk

Air Ops

Temporary Flight Restriction

USFS Road Closures

Roads

USFS Road Closures

USFS Fire Closure Area



7/11/2021 2126
 Acres from IR and GPS
 North American 1983 Datum.
 LatLong Grid

