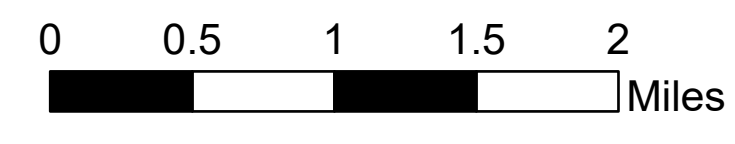


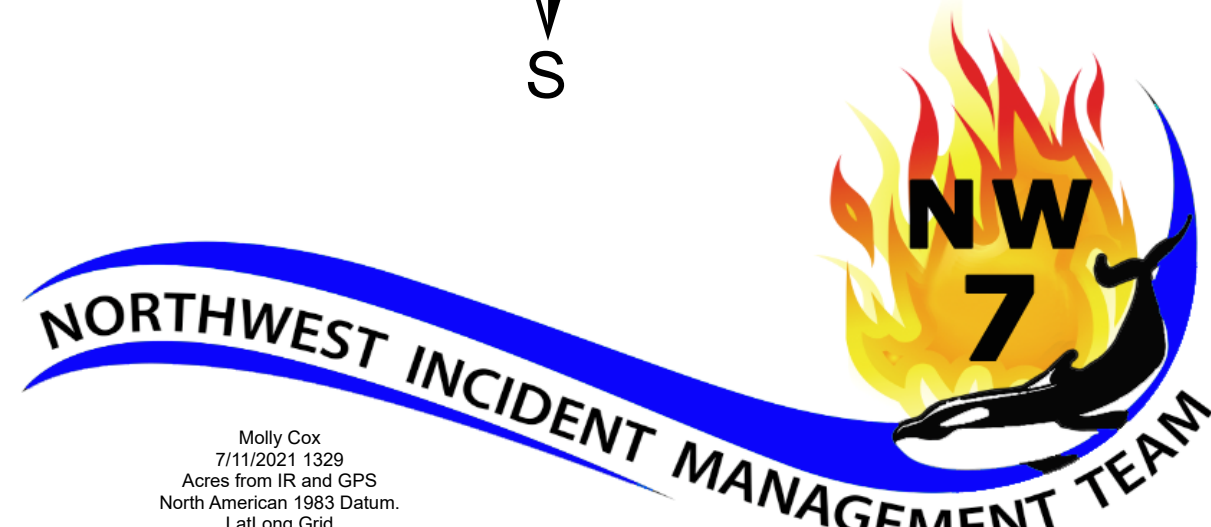
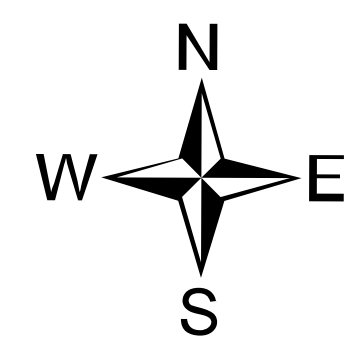
# Ops Map

Dry Gulch Fire  
WASES-020655  
July 11, 2021

46,948 acres

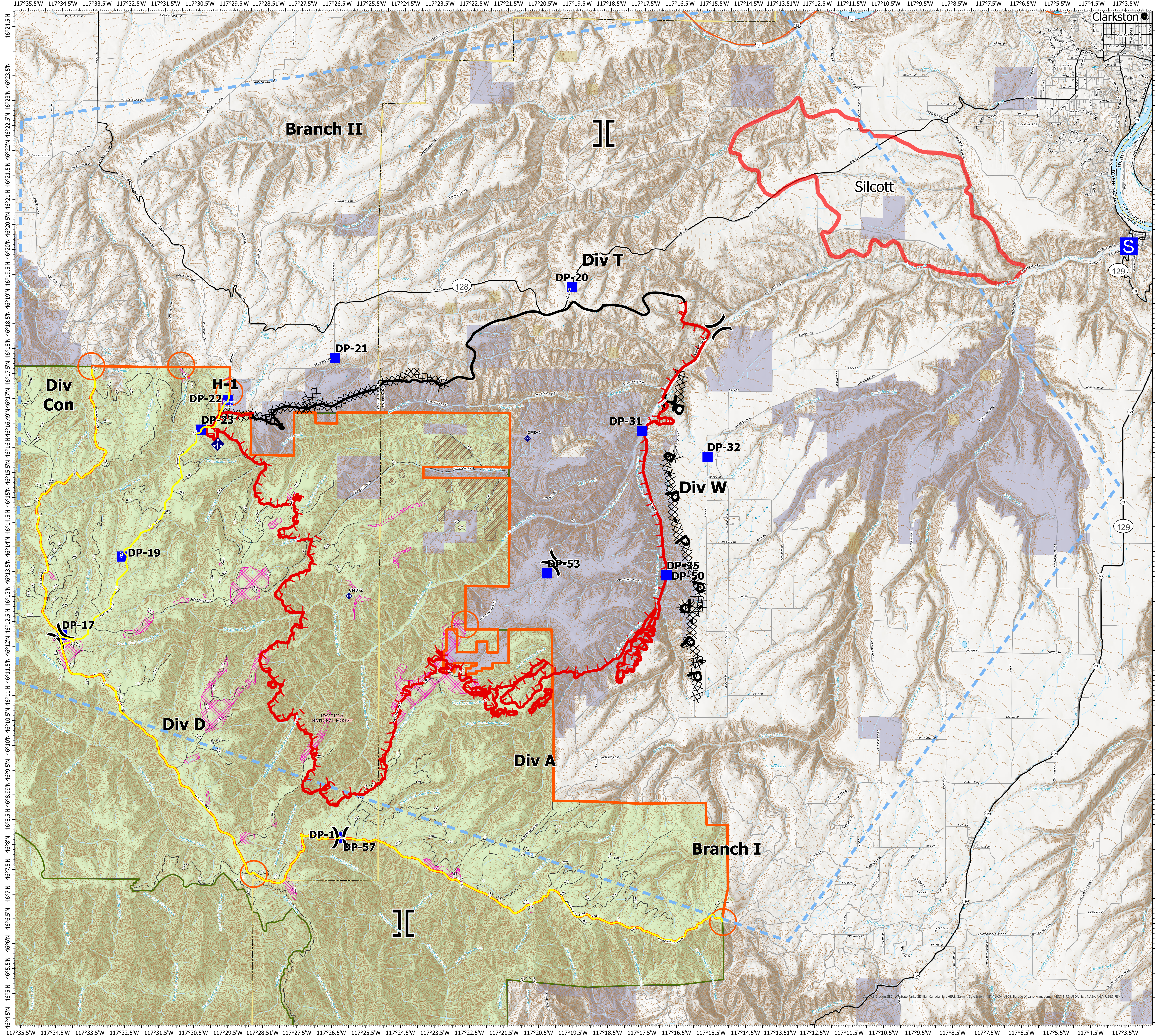


- Air Operations**
  - Hotspot
- Assignment Breaks**
  - Division Break
  - Branch Break
- Logistics**
  - Drop Point
  - Staging Area
- Communications**
  - Mobile Weather Unit
  - Repeater
- Ops Completed**
  - Completed Dozer Line
  - Completed Hand Line
  - Completed Flow Line
- Air Ops**
  - Temporary Flight Restriction
- Fire Perimeter**
  - Fire Edge
  - Contained Line
  - USFS Road Closures
- Roads**
  - U.S. Forest Service
  - Bureau of Land Management
  - State Land
  - Other Land, Including Private
- Aerial Fire Avoidance**
  - Aerial Fire Avoidance
  - Dry Gulch READ Sensitive Areas
  - USFS Fire Closure Area
  - USFS Road Closures



Maple, CA  
11/13/2011 10:00  
Aerial from R and GPS  
North American 1983 Datum  
Lat/Long Grid

NAD83 UTM Zone 11



Clarkston