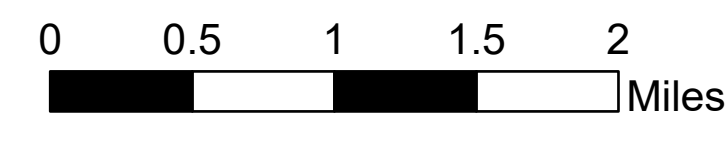


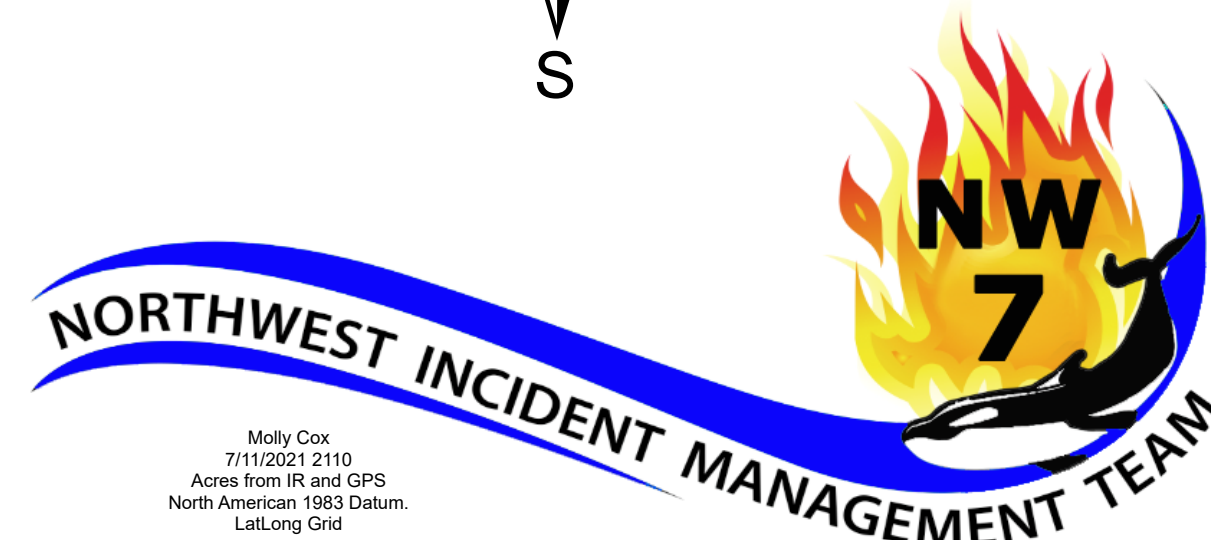
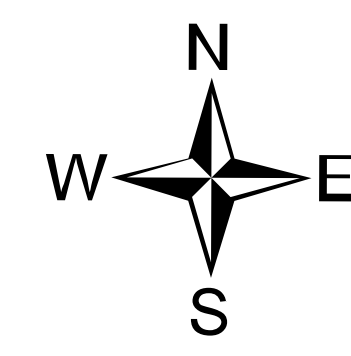
Ops Map

Dry Gulch Fire
WASES-020655
July 12, 2021

46,948 acres

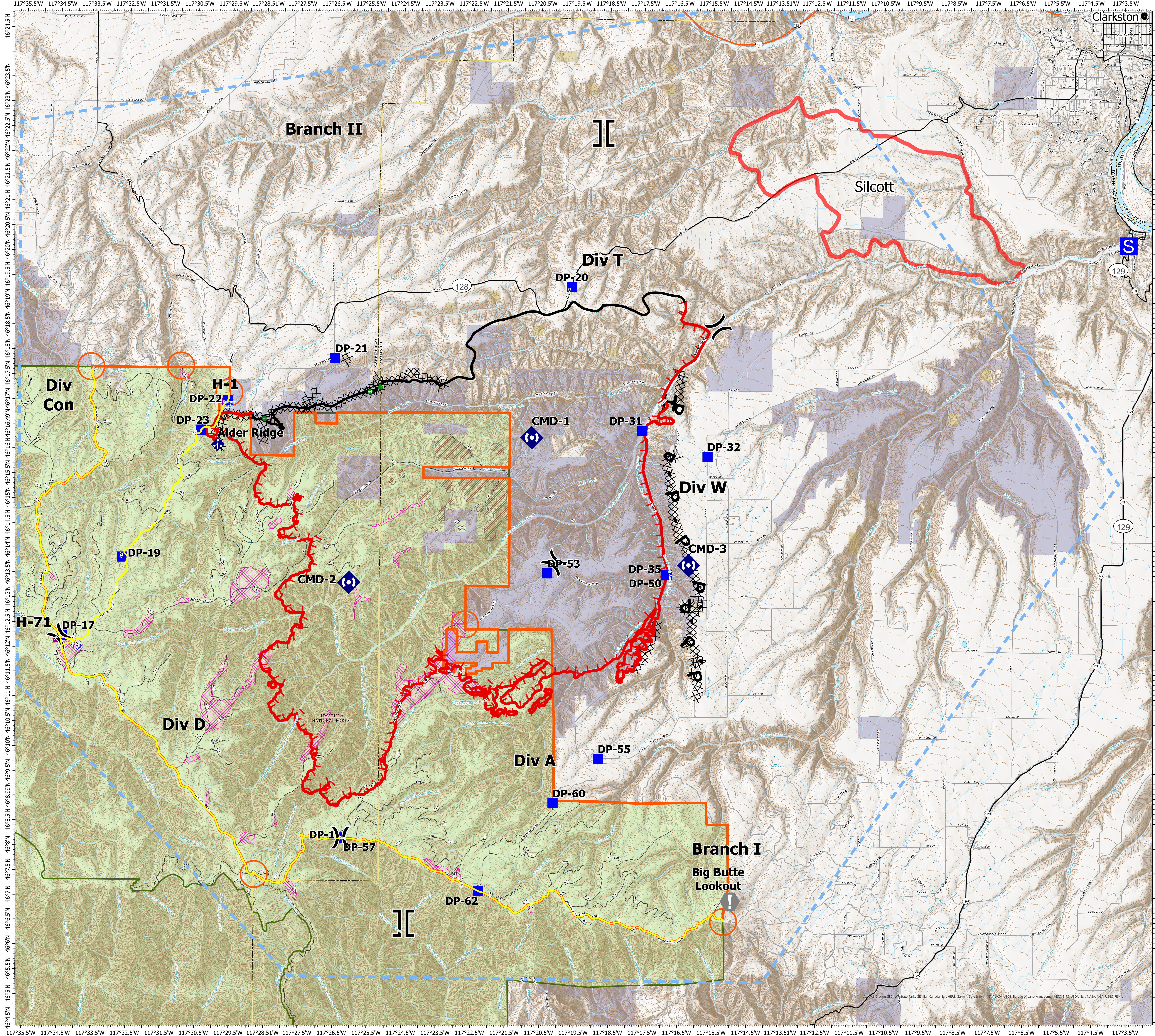


- Air Operations**
- Assignment Breaks**
 - Division Break
 - Branch Break
- Logistics**
 - Drop Point
 - Staging Area
- Reference**
 - Value at Risk
- Repair**
 - Fence - Cut/Damaged
- Communications**
 - Mobile Weather Unit
 - Repeater
- Water**
 - Water Source
- Ops Completed**
 - Completed Over Line
 - Completed Hand Line
 - Completed Flow Line
- Air Ops**
 - Temporary Flight Restriction
- Fire Perimeter**
 - Fire Edge
 - Contained Line
 - USFS Road Closure
- Roads**
 - U.S. Forest Service
 - Bureau of Land Management
 - State Land
 - Other Land, Including Private
- Aerial Fire Avoidance**
 - Dry Gulch ROAD Sensitive Areas
 - USFS Fire Closure Area
 - USFS Road Closure



Maple, CA
1/1/2021 8:10
Aerial from IR and GPS
North American 1983 Datum
Lat/Long GRID

NAD83 UTM Zone 11



Clarkston

129

129

129