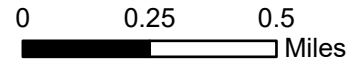


IAP Map Book

Dry Gulch Fire
WASES-020655
07/11/2021 Day

38,223 acres



	1	2	3
4	5	6	7
8	9	10	11
12	13	14	15

Page 1 of 15

Logistics

Drop Point

Ops Completed

Completed Dozer Line

Fire Perimeter

Contained Line

USFS Road Closures

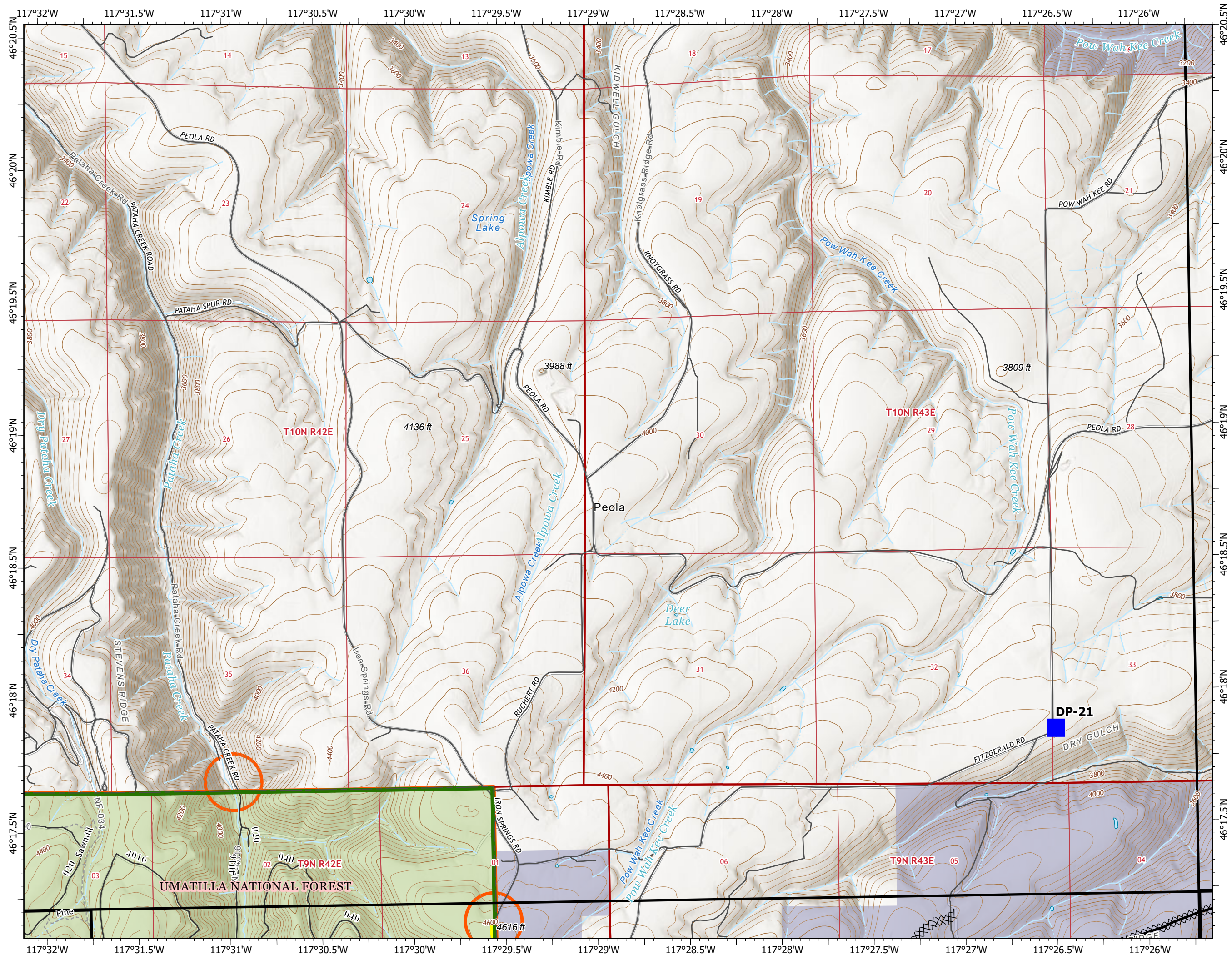
Roads

USFS Road Closures

USFS Fire Closure Area



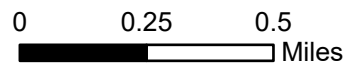
7/10/2021 2246
Acres from IR and GPS
North American 1983 Datum,
LatLong Grid



IAP Map Book

Dry Gulch Fire
WASES-020655
07/11/2021 Day

38,223 acres



	1	2	3
4	5	6	7
8	9	10	11
12	13	14	15

Page 2 of 15

Logistics

■ Drop Point

Ops Completed

⊗ Completed Dozer Line

Fire Perimeter

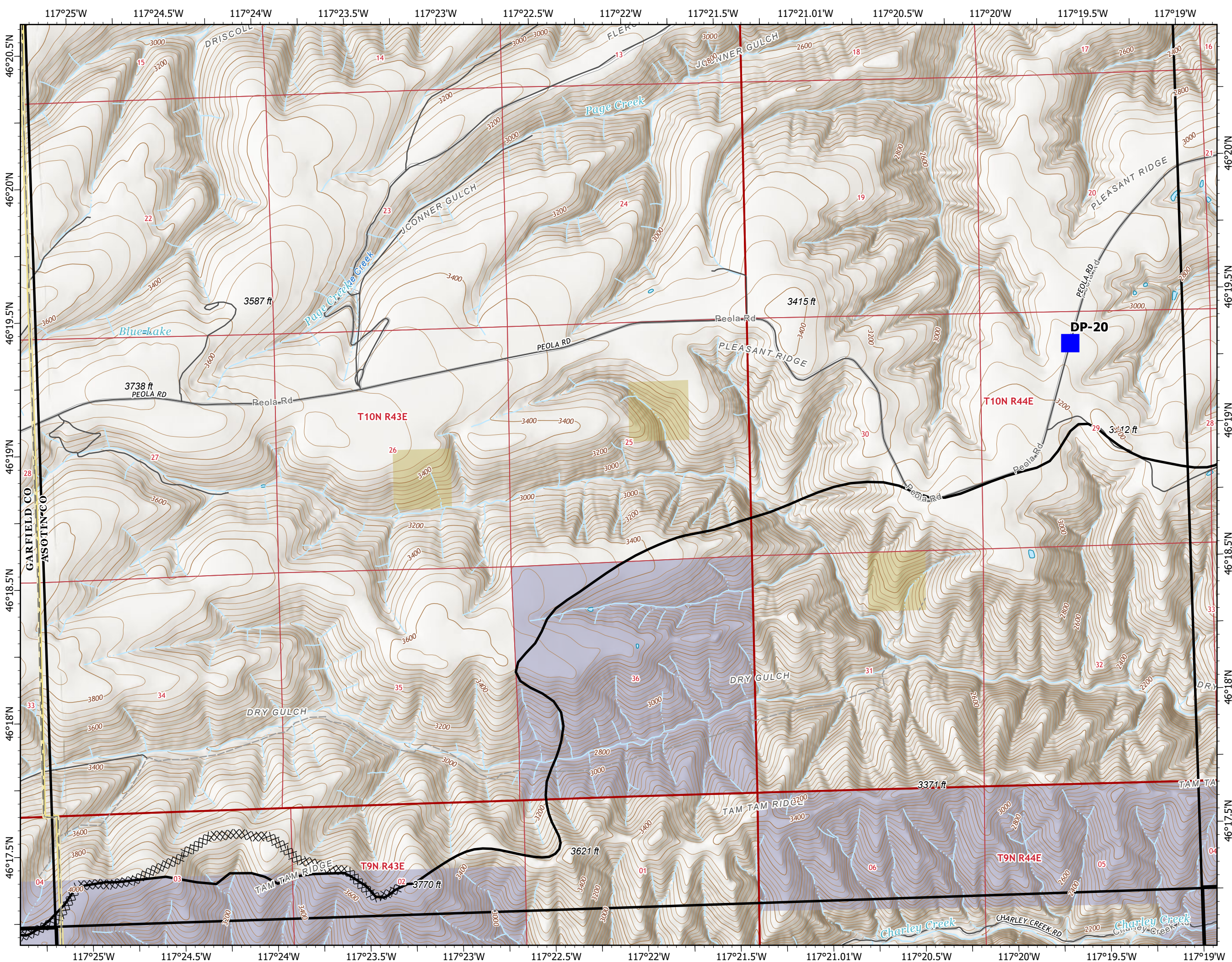
— Contained Line

○ USFS Road Closures

▭ USFS Fire Closure Area



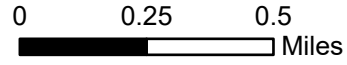
7/10/2021 2246
Acres from IR and GPS
North American 1983 Datum.
LatLong Grid



IAP Map Book

Dry Gulch Fire
WASES-020655
07/11/2021 Day

38,223 acres



	1	2	3
4	5	6	7
8	9	10	11
12	13	14	15

Page 3 of 15

Assignment Breaks



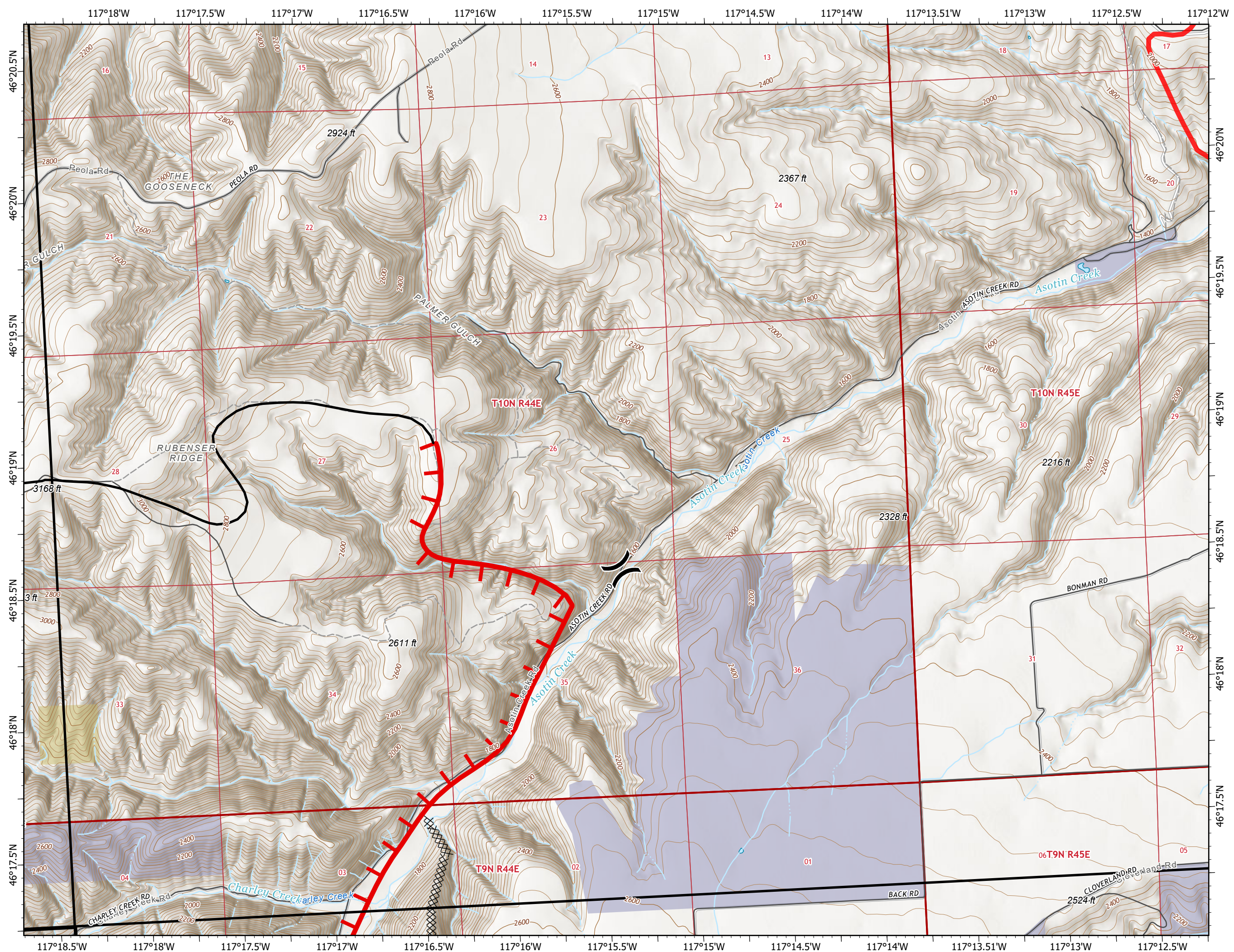
Ops Completed



Fire Perimeter



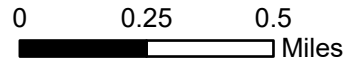
7/10/2021 2246
Acres from IR and GPS
North American 1983 Datum,
LatLong Grid



IAP Map Book

Dry Gulch Fire
 WASES-020655
 07/11/2021 Day

38,223 acres



	1	2	3
4	5	6	7
8	9	10	11
12	13	14	15

Page 4 of 15

Logistics

Drop Point

Air Ops

Temporary Flight Restriction

USFS Road Closures

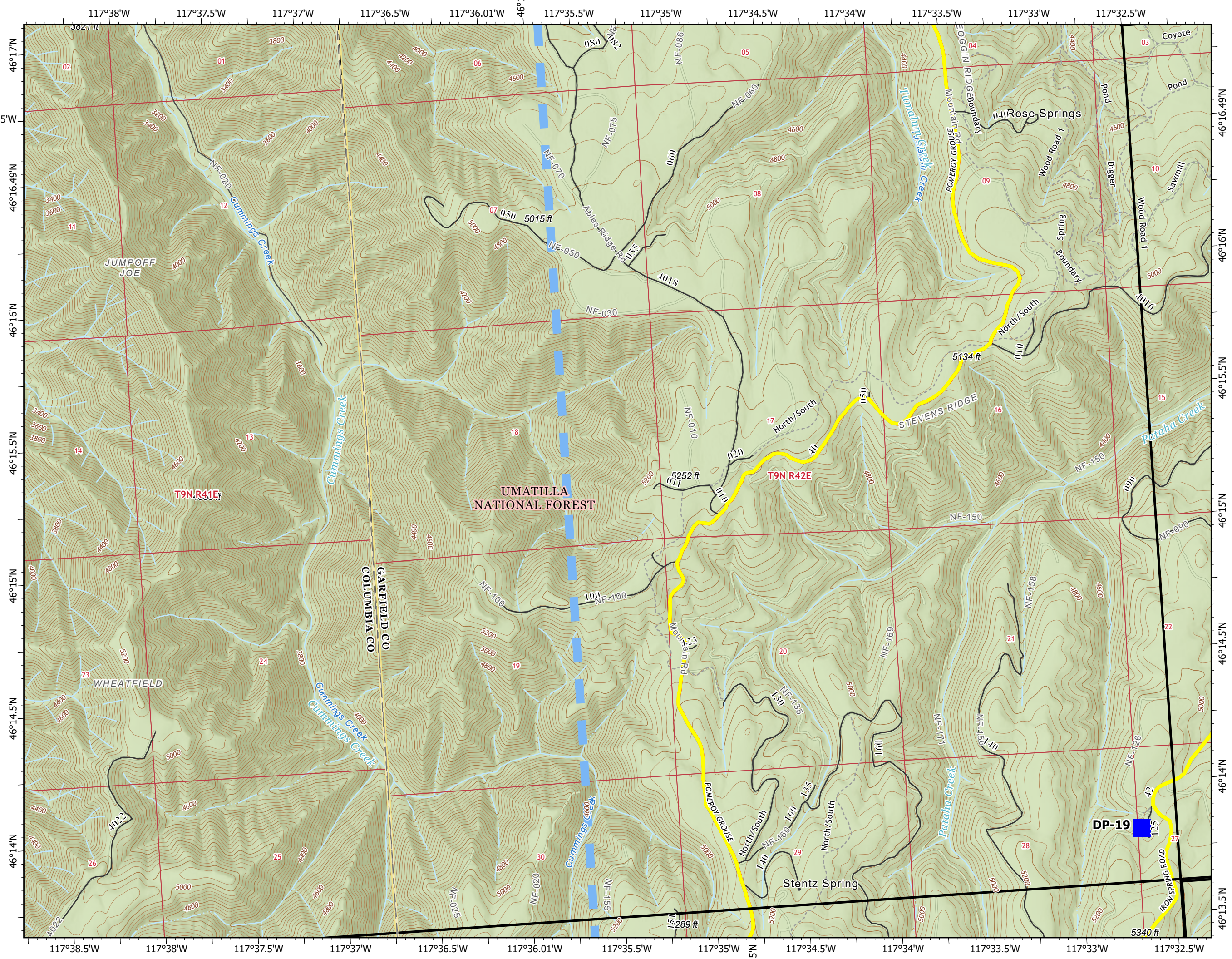
Roads

USFS Road Closures

USFS Fire Closure Area



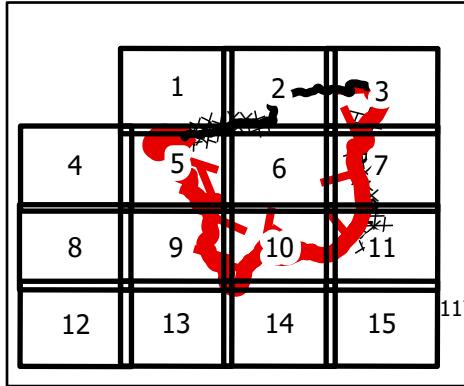
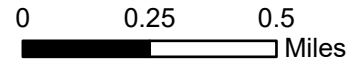
7/10/2021 2247
 Acres from IR and GPS
 North American 1983 Datum.
 LatLong Grid



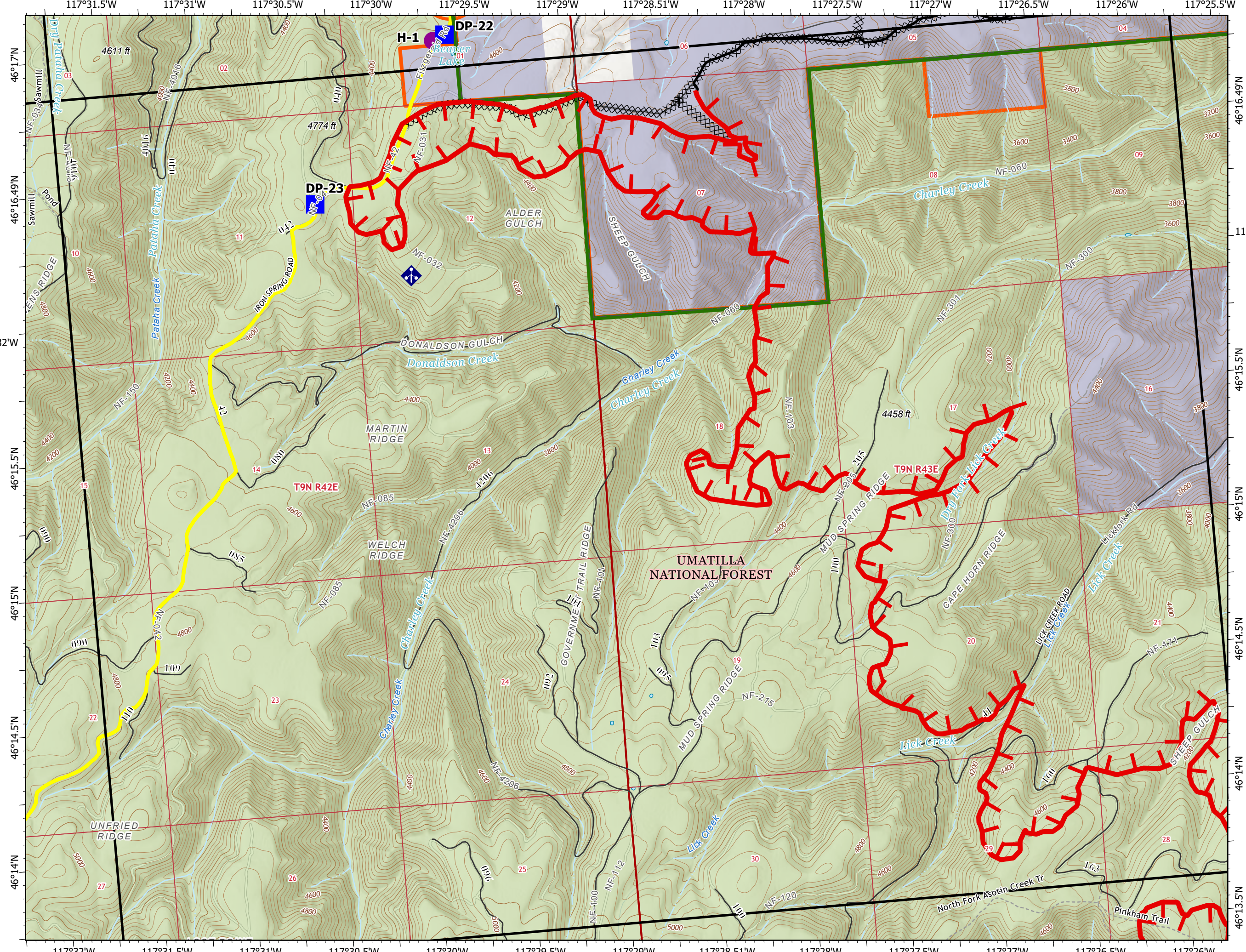
IAP Map Book

Dry Gulch Fire
 WASES-020655
 07/11/2021 Day

38,223 acres



Page 5 of 15



Air Operations

Helispot

Logistics

Drop Point

Communications

Mobile Weather Unit

Ops Completed

Completed Dozer Line

Fire Perimeter

Fire Edge

Contained Line

USFS Road Closures

Roads

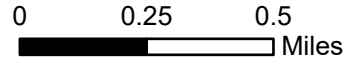


7/10/2021 2247
 Acres from IR and GPS
 North American 1983 Datum.
 LatLong Grid

IAP Map Book

Dry Gulch Fire
 WASES-020655
 07/11/2021 Day

38,223 acres







	1	2	3
4	5	6	7
8	9	10	11
12	13	14	15

Page 6 of 15

Assignment Breaks

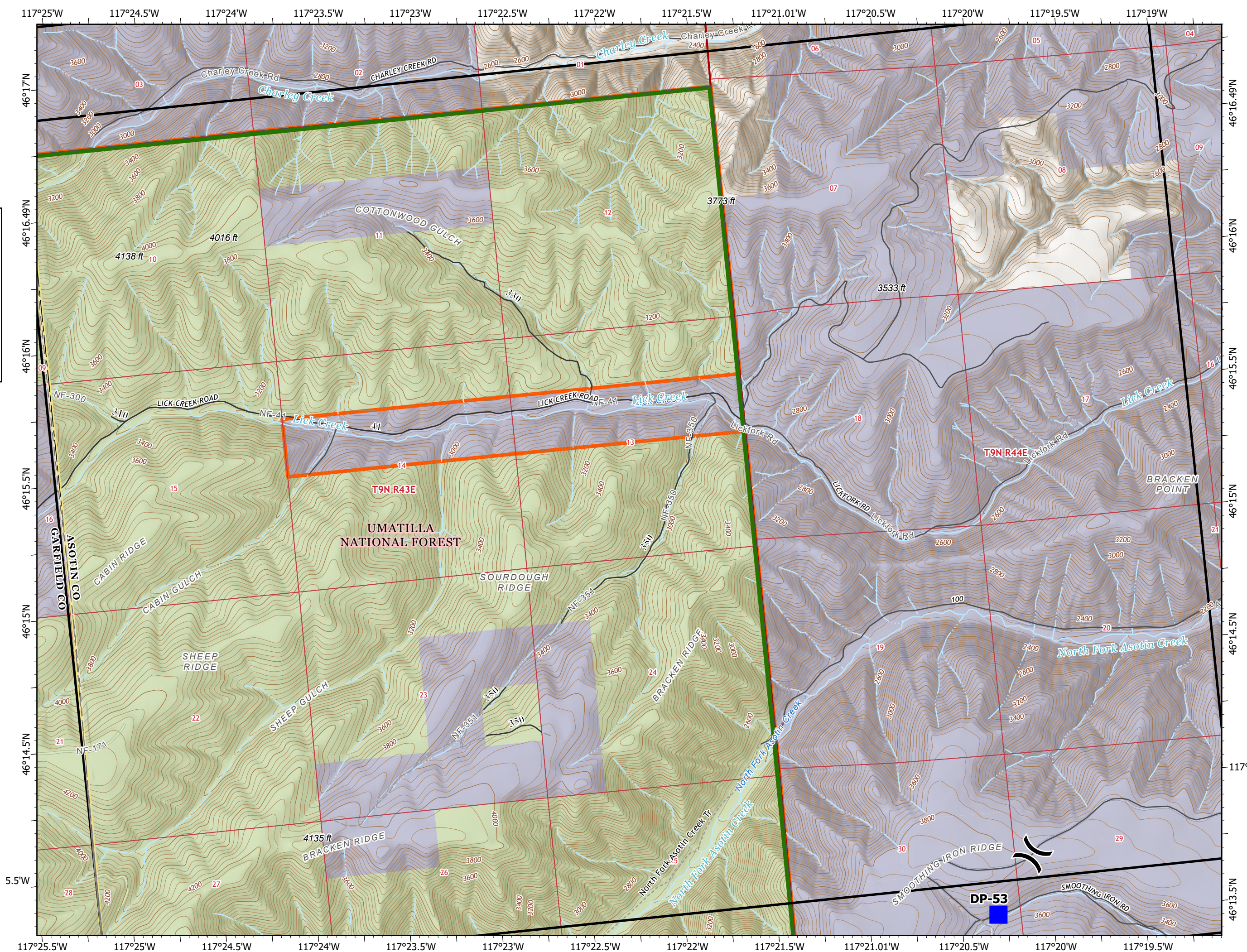


Logistics

-  Drop Point
-  Roads
-  USFS Road Closures
-  USFS Fire Closure Area



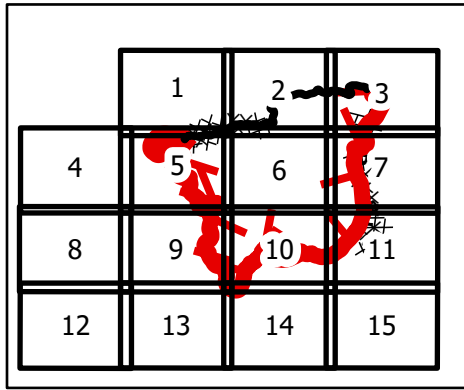
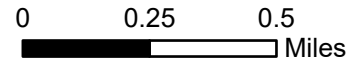
7/10/2021 2247
 Acres from IR and GPS
 North American 1983 Datum,
 LatLong Grid



IAP Map Book

Dry Gulch Fire
 WASES-020655
 07/11/2021 Day

38,223 acres



Page 7 of 15

117°18.5'W

Logistics

Drop Point

Ops Completed

Completed Dozer Line

Completed Hand Line

Completed Plow Line

Fire Perimeter

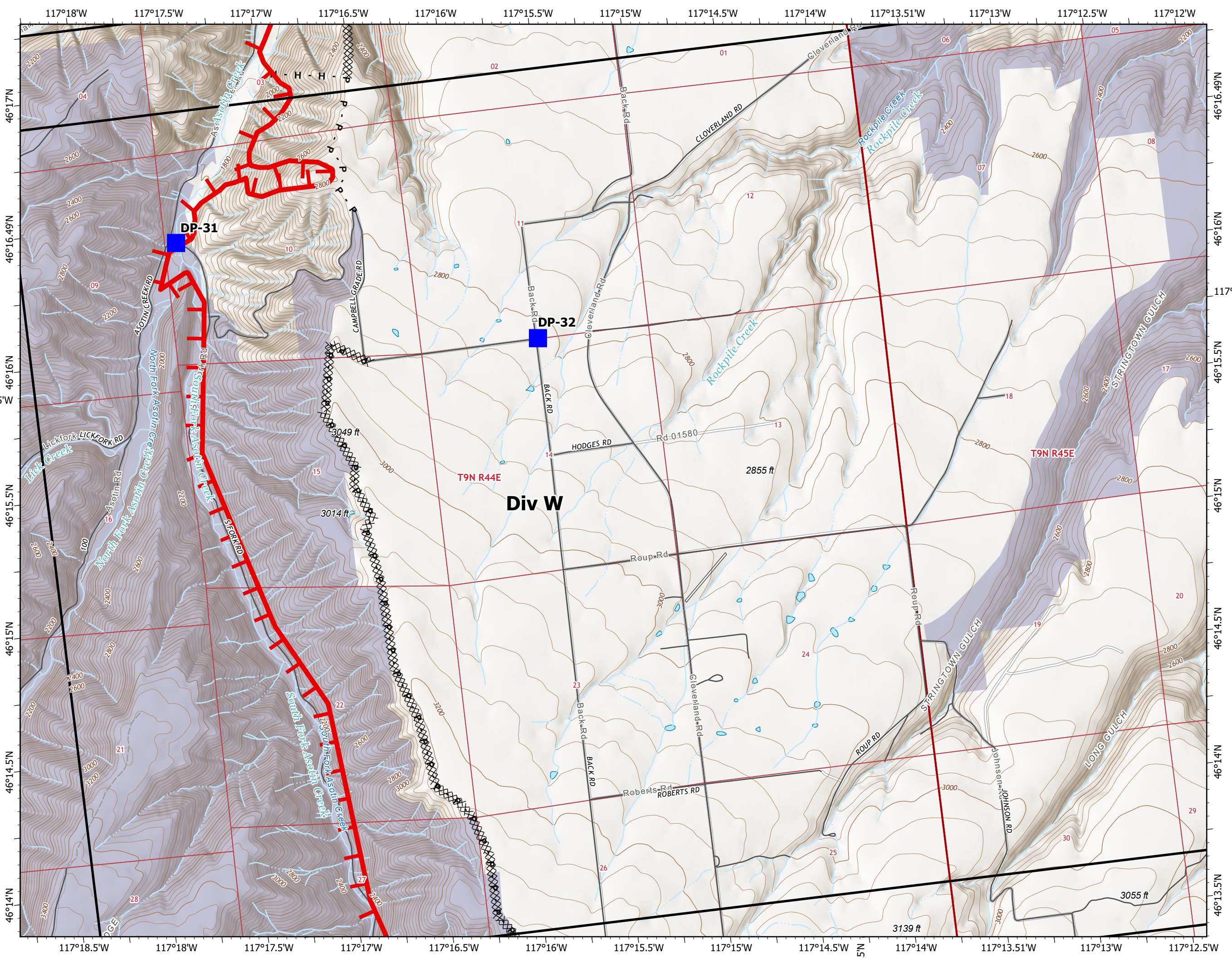
Fire Edge

USFS Road Closures

USFS Fire Closure Area



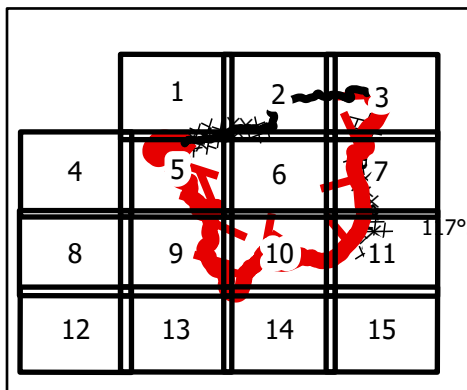
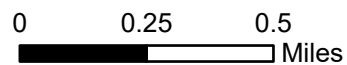
7/10/2021 2247
 Acres from IR and GPS
 North American 1983 Datum,
 LatLong Grid



IAP Map Book

Dry Gulch Fire
WASES-020655
07/11/2021 Day

38,223 acres



Page 8 of 15

Assignment Breaks



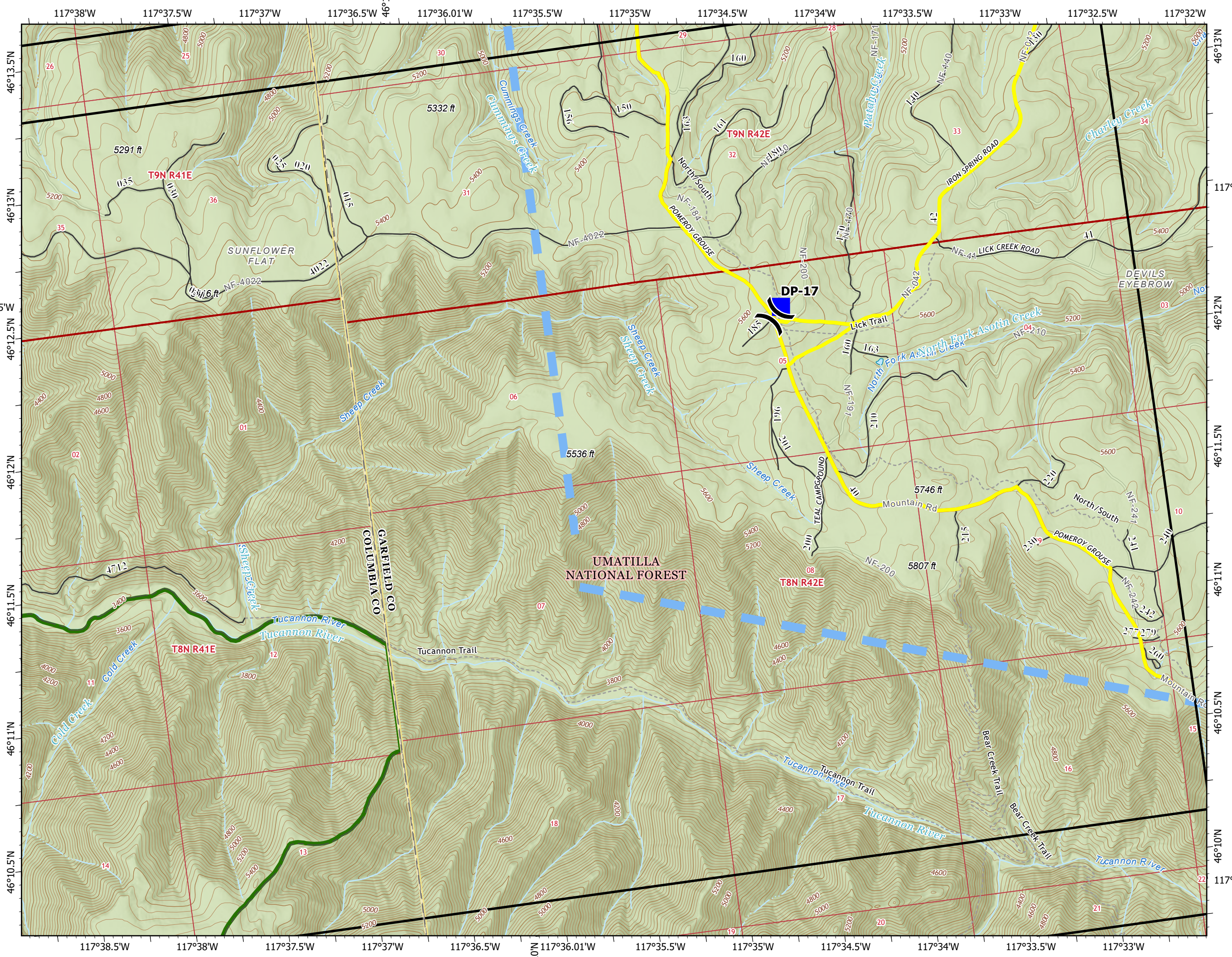
Logistics



Air Ops



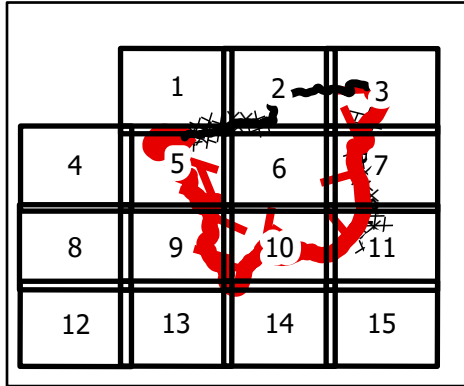
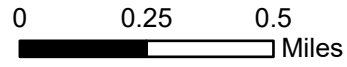
7/10/2021 2248
Acres from IR and GPS
North American 1983 Datum.
LatLong Grid



IAP Map Book

Dry Gulch Fire
WASES-020655
07/11/2021 Day

38,223 acres



Page 9 of 15

Air Ops

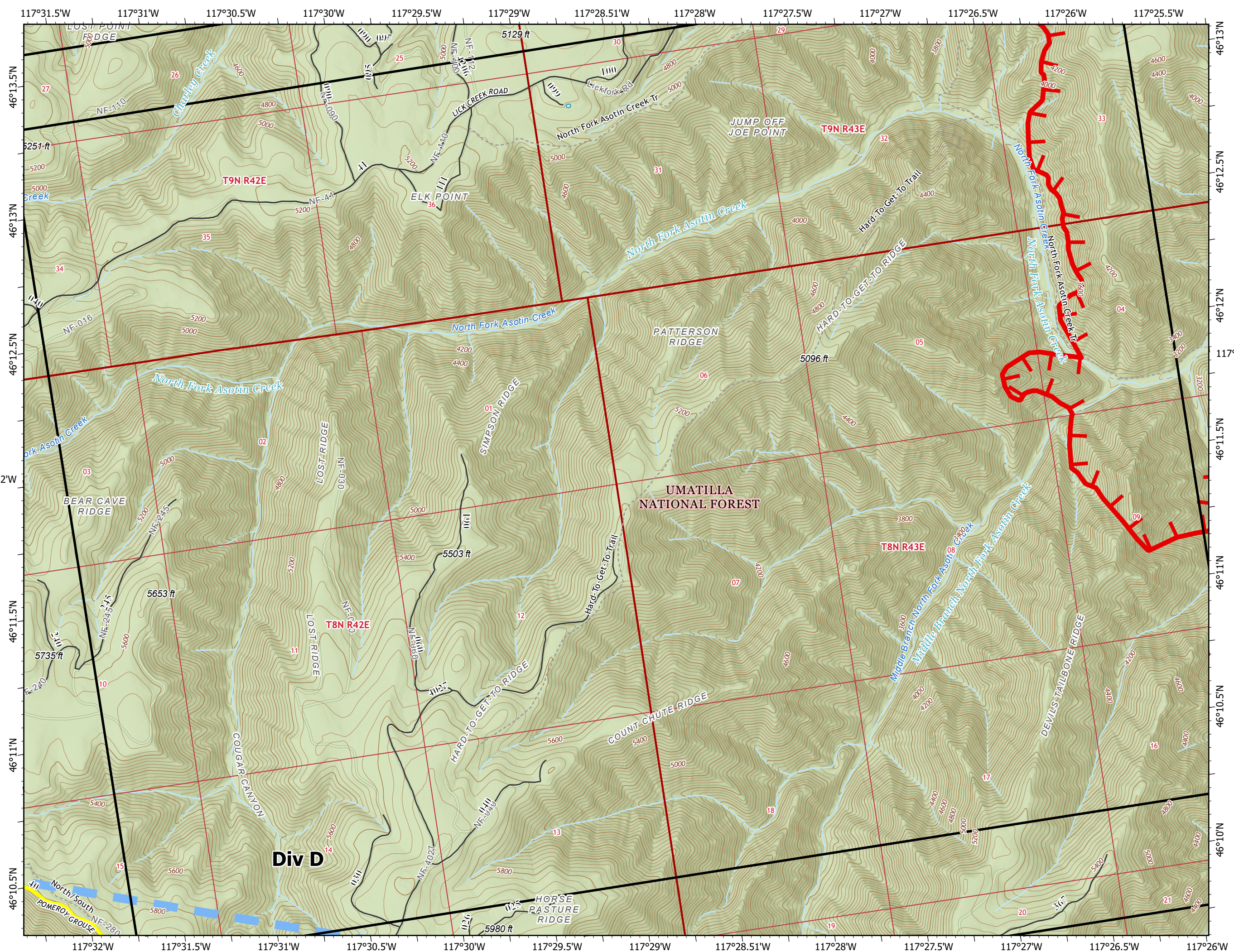
Temporary Flight Restriction

Fire Perimeter

- Fire Edge
- USFS Road Closures
- Roads
- USFS Road Closures
- USFS Fire Closure Area



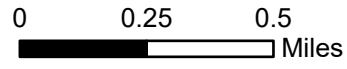
7/10/2021 2248
Acres from IR and GPS
North American 1983 Datum,
LatLong Grid



IAP Map Book

Dry Gulch Fire
 WASES-020655
 07/11/2021 Day

38,223 acres



	1	2	3
4	5	6	7
8	9	10	11
12	13	14	15

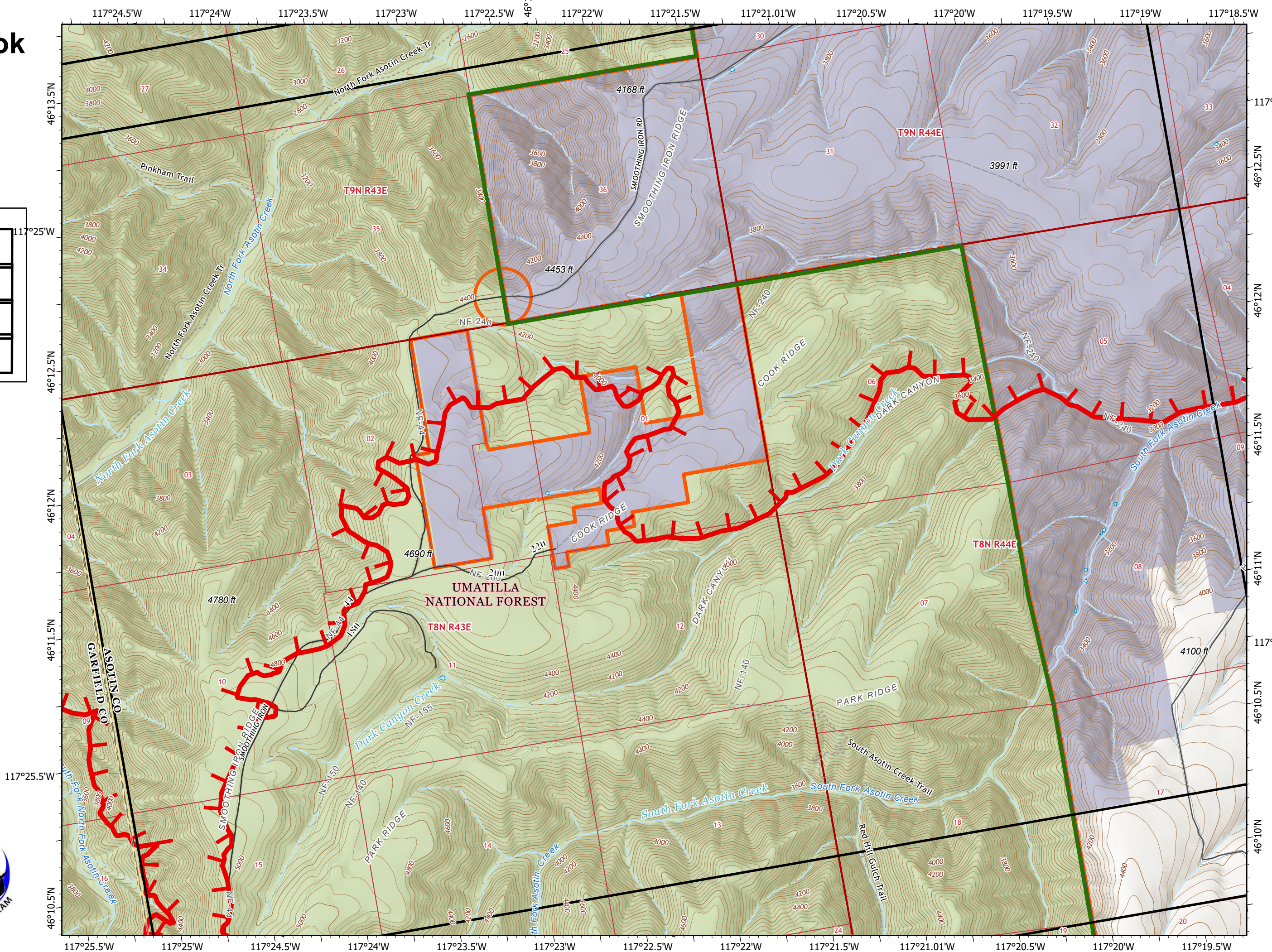
Page 10 of 15

Fire Perimeter

- Fire Edge
- Roads
- USFS Road Closures
- USFS Fire Closure Area



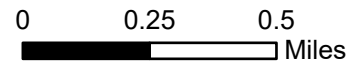
7/10/2021 2248
 Acres from IR and GPS
 North American 1983 Datum,
 LatLong Grid



IAP Map Book

Dry Gulch Fire
 WASES-020655
 07/11/2021 Day

38,223 acres



	1	2	3
4	5	6	7
8	9	10	11
12	13	14	15

Page 11 of 15

Logistics

Drop Point

Ops Completed

Completed Dozer Line

Completed Plow Line

Fire Perimeter

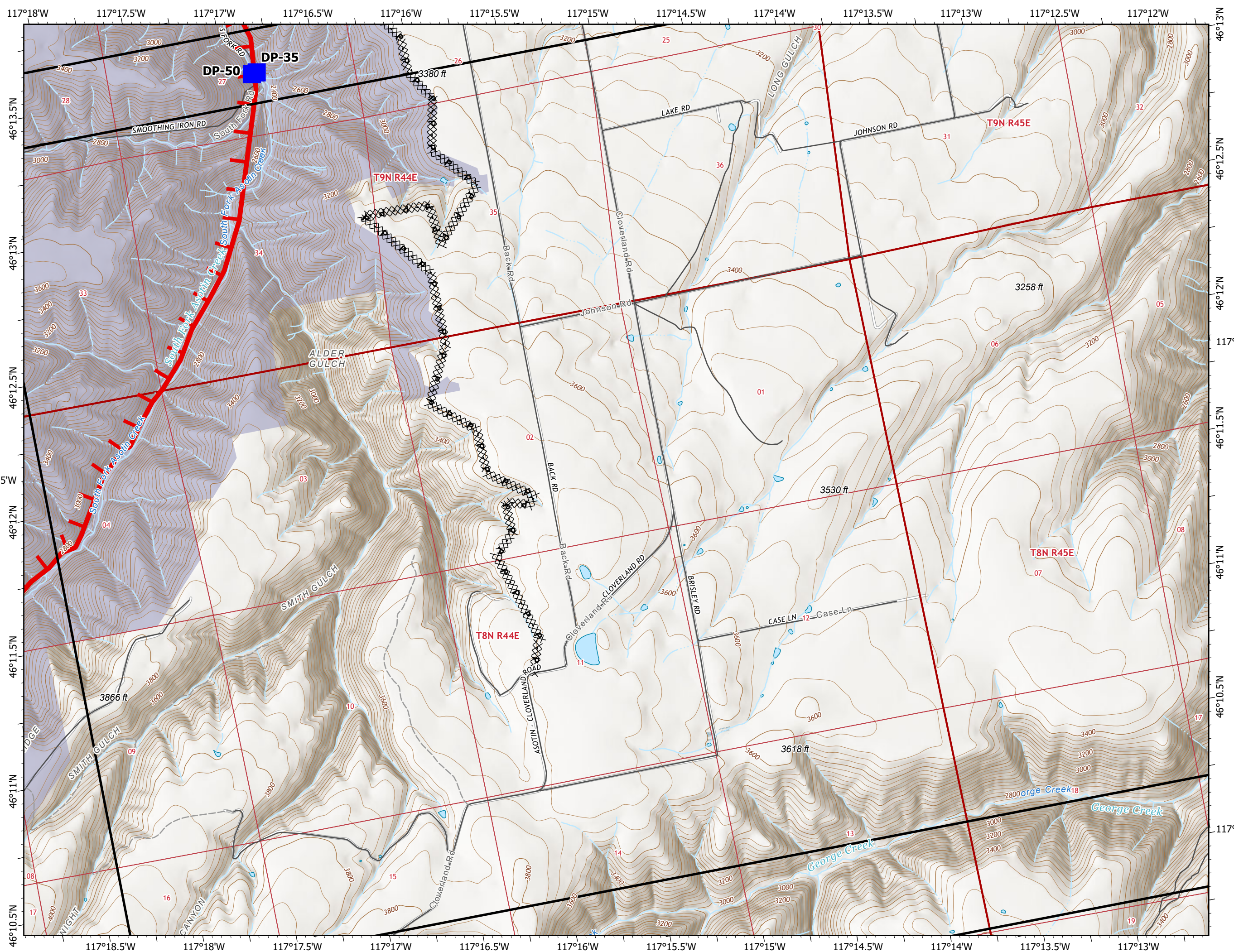
Fire Edge

USFS Road Closures

USFS Fire Closure Area



7/10/2021 2248
 Acres from IR and GPS
 North American 1983 Datum
 LatLong Grid



IAP Map Book

Dry Gulch Fire
 WASES-020655
 07/11/2021 Day

38,223 acres
 0 0.25 0.5 Miles

1	2	3
4	5	6
8	9	10
12	13	14

Page 13 of 15

Assignment Breaks

Division Break

Logistics

Drop Point

Air Ops

Temporary Flight Restriction

USFS Road Closures

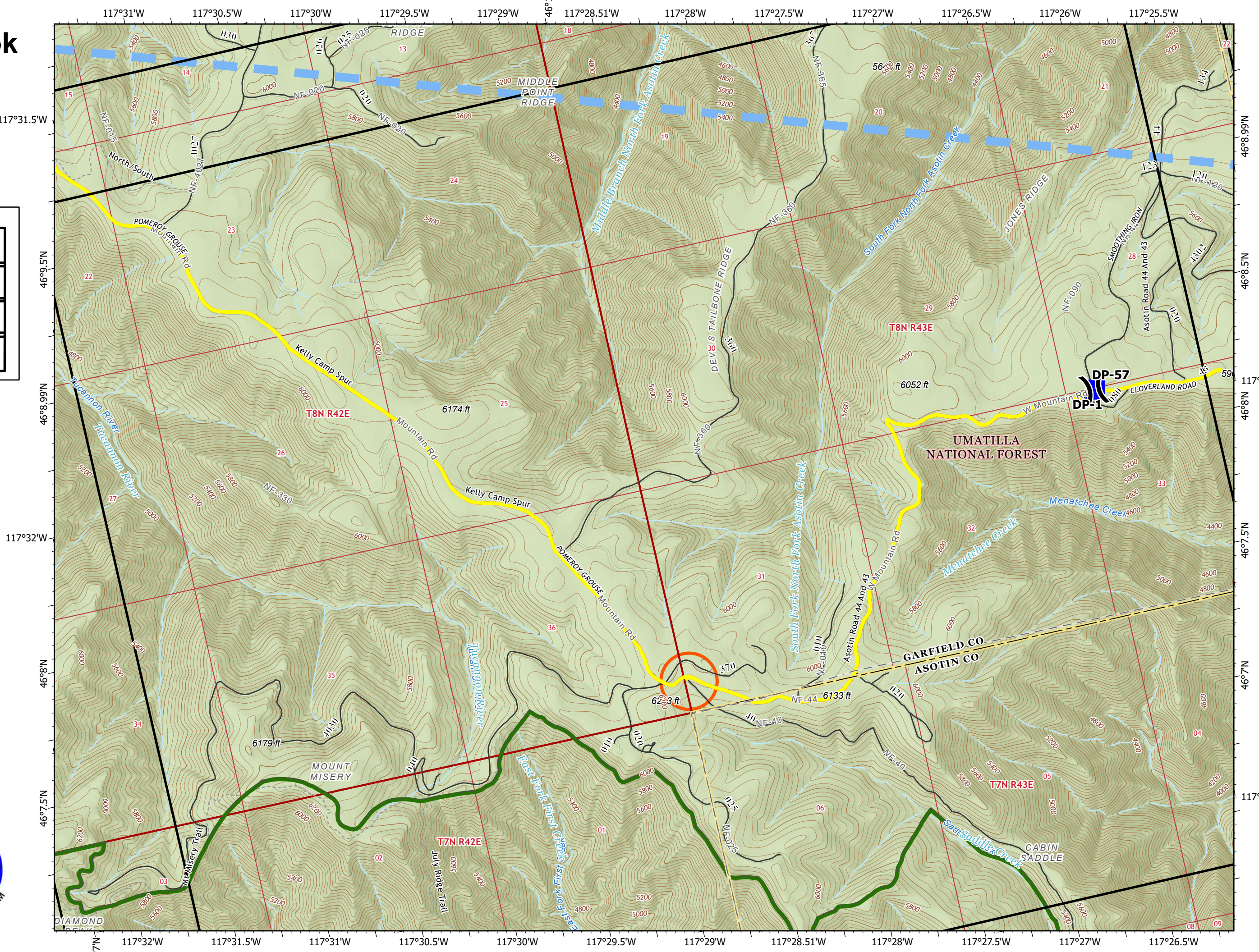
Roads

USFS Road Closures

USFS Fire Closure Area



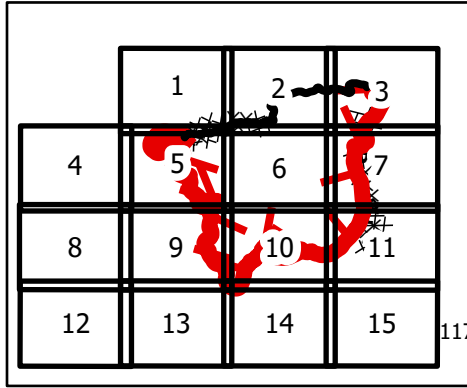
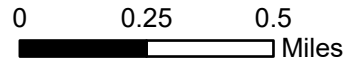
7/10/2021 2249
 Acres from IR and GPS
 North American 1983 Datum.
 LatLong Grid



IAP Map Book

Dry Gulch Fire
WASES-020655
07/11/2021 Day

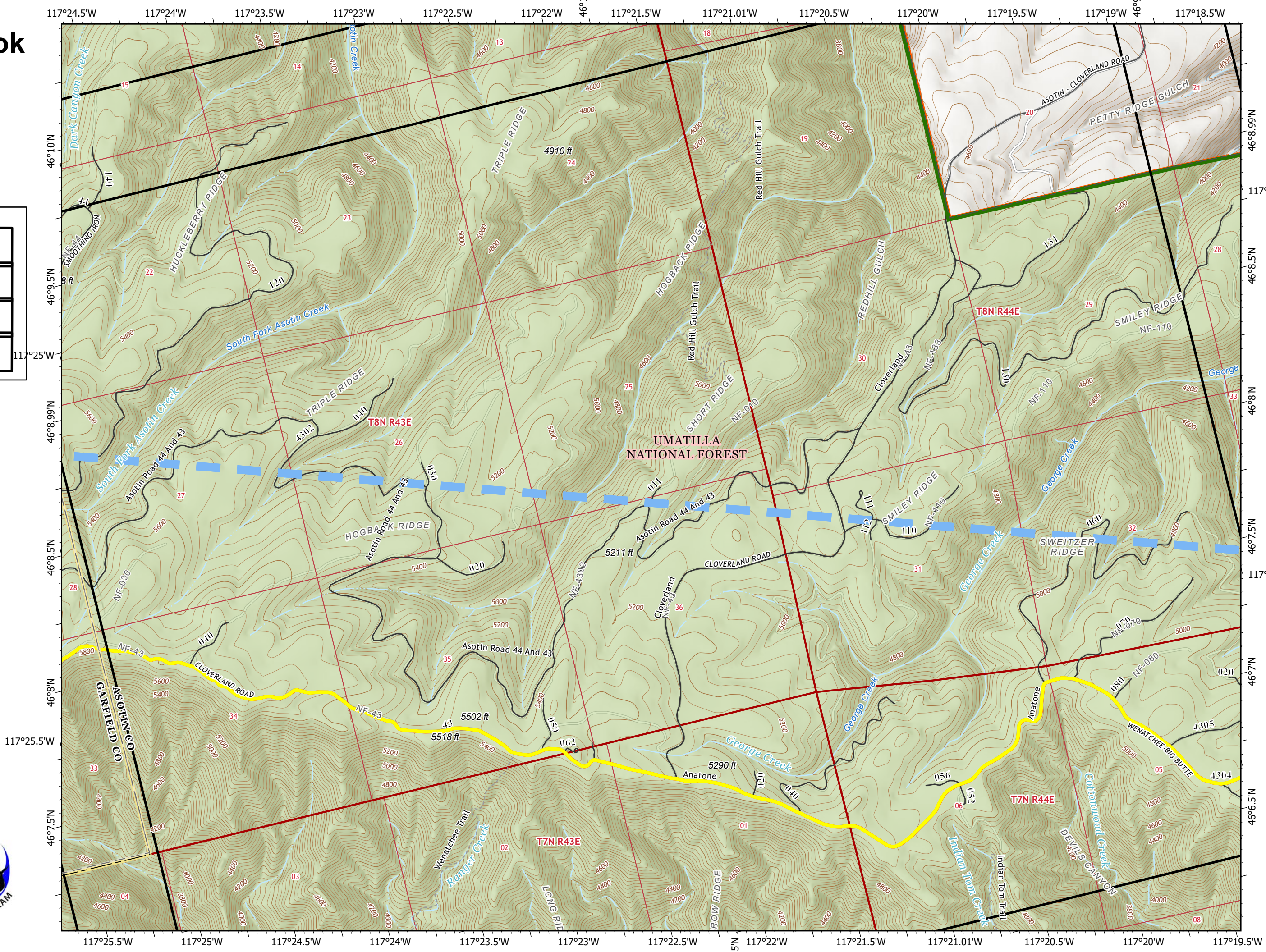
38,223 acres



Page 14 of 15

Air Ops

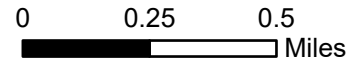
- Temporary Flight Restriction
- USFS Road Closures
- Roads
- USFS Road Closures
- USFS Fire Closure Area



IAP Map Book

Dry Gulch Fire
WASES-020655
07/11/2021 Day

38,223 acres



	1	2	3
4	5	6	7
8	9	10	11
12	13	14	15

Page 15 of 15

Air Ops

- Temporary Flight Restriction
- USFS Road Closures
- Roads
- USFS Road Closures
- USFS Fire Closure Area

