

117°44'W

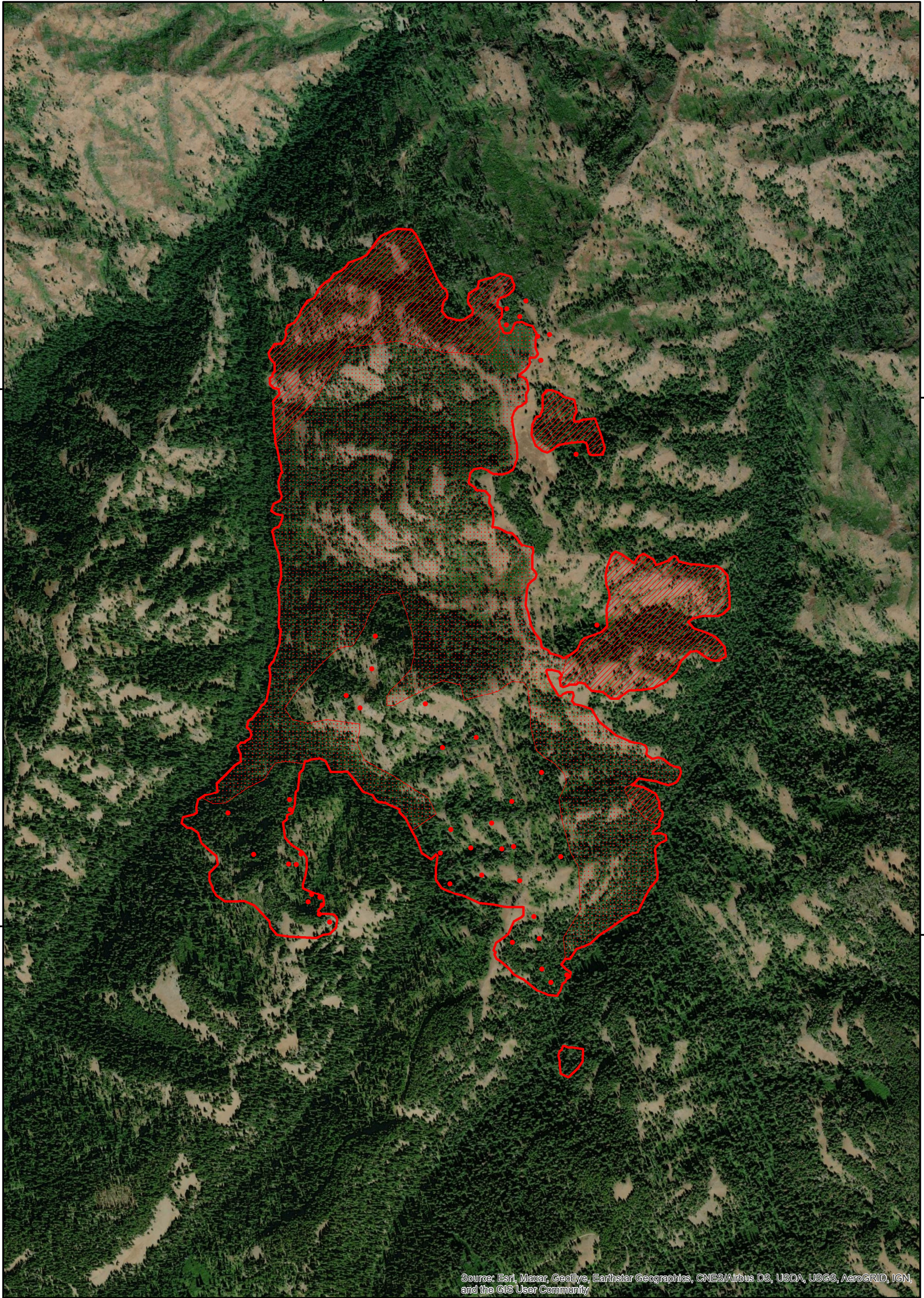
117°43'W

46°9'N

46°9'N

46°8'N

46°8'N







Source: Esri, Maxar, GeoEye, Earthstar Geographics, CNES/Airbus DS, USDA, USGS, AeroGRID, IGN, and the GIS User Community

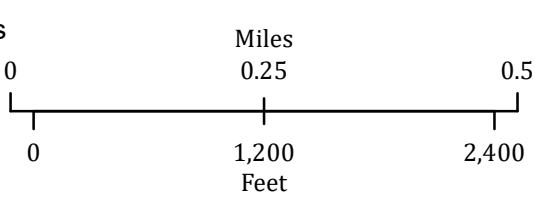
117°44'W

117°43'W

Green Ridge
 OR-UMF-000659
 Infrared
 Interpretation

Imagery Date:
 07/15/2021 1947 PDT

-  Isolated Heat Sources
-  Heat Perimeter
-  Intense Heat
-  Scattered Heat



Datum: North American 1983



IRIN: Howard Harrison
 Map produced:
 07/16/2021 0110 PDT
 Interpreted size: 595 acres

