

117°44'W

117°43'W

117°42'W

46°10'N

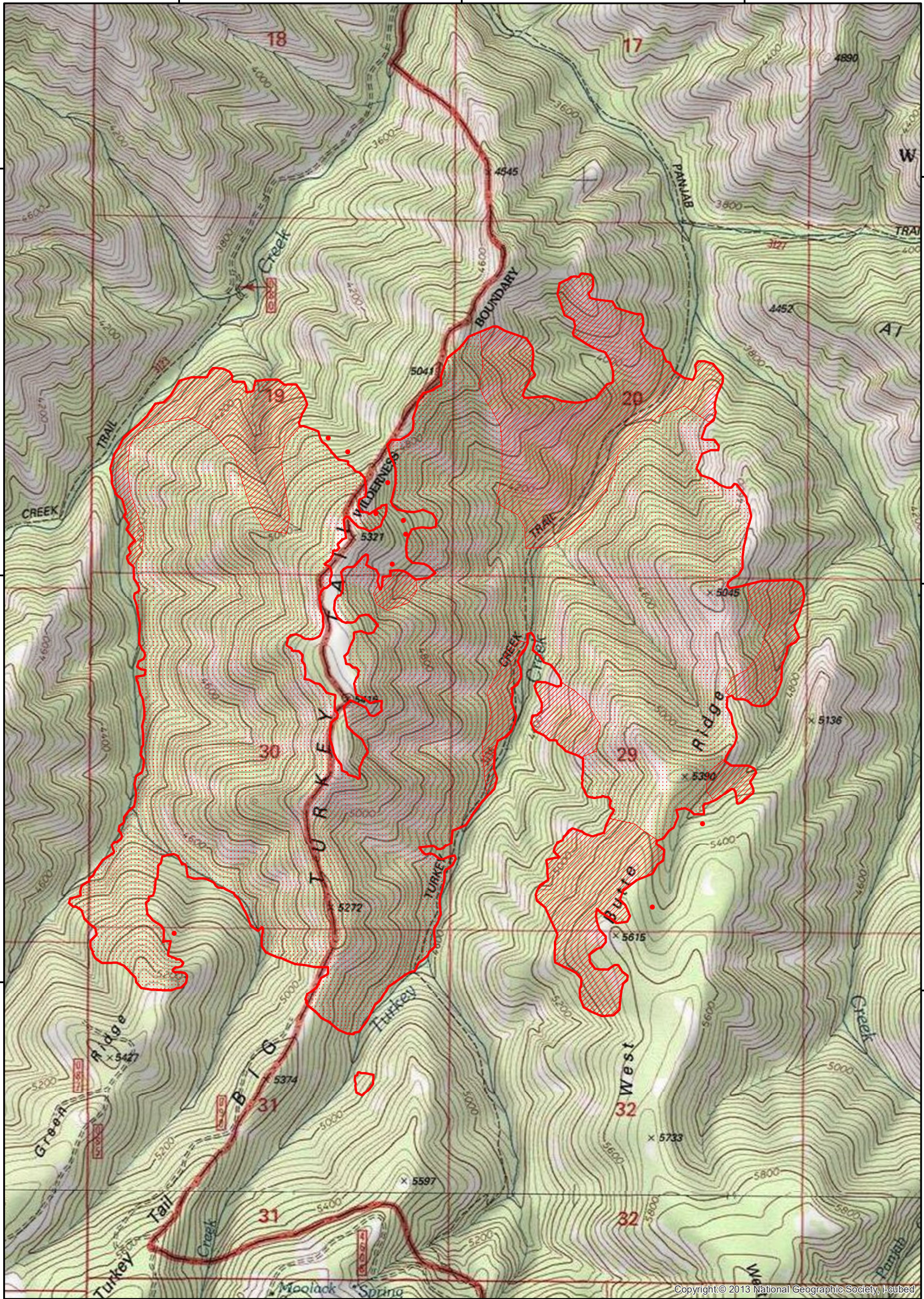
46°10'N

46°9'N

46°9'N

46°8'N

46°8'N



Copyright © 2013 National Geographic Society, I-cubed

117°44'W

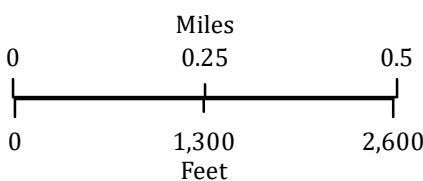
117°43'W

117°42'W

Green Ridge
 OR-UMF-000659
 Infrared
 Interpretation

Imagery Date:
 07/18/2021 1900 PDT

- Isolated Heat Sources
- Heat Perimeter
- Intense Heat
- Scattered Heat



Datum: North American 1983



IRIN: Howard Harrison
 Map produced:
 07/19/2021 0053 PDT
 Interpreted size: 1,569 acres

