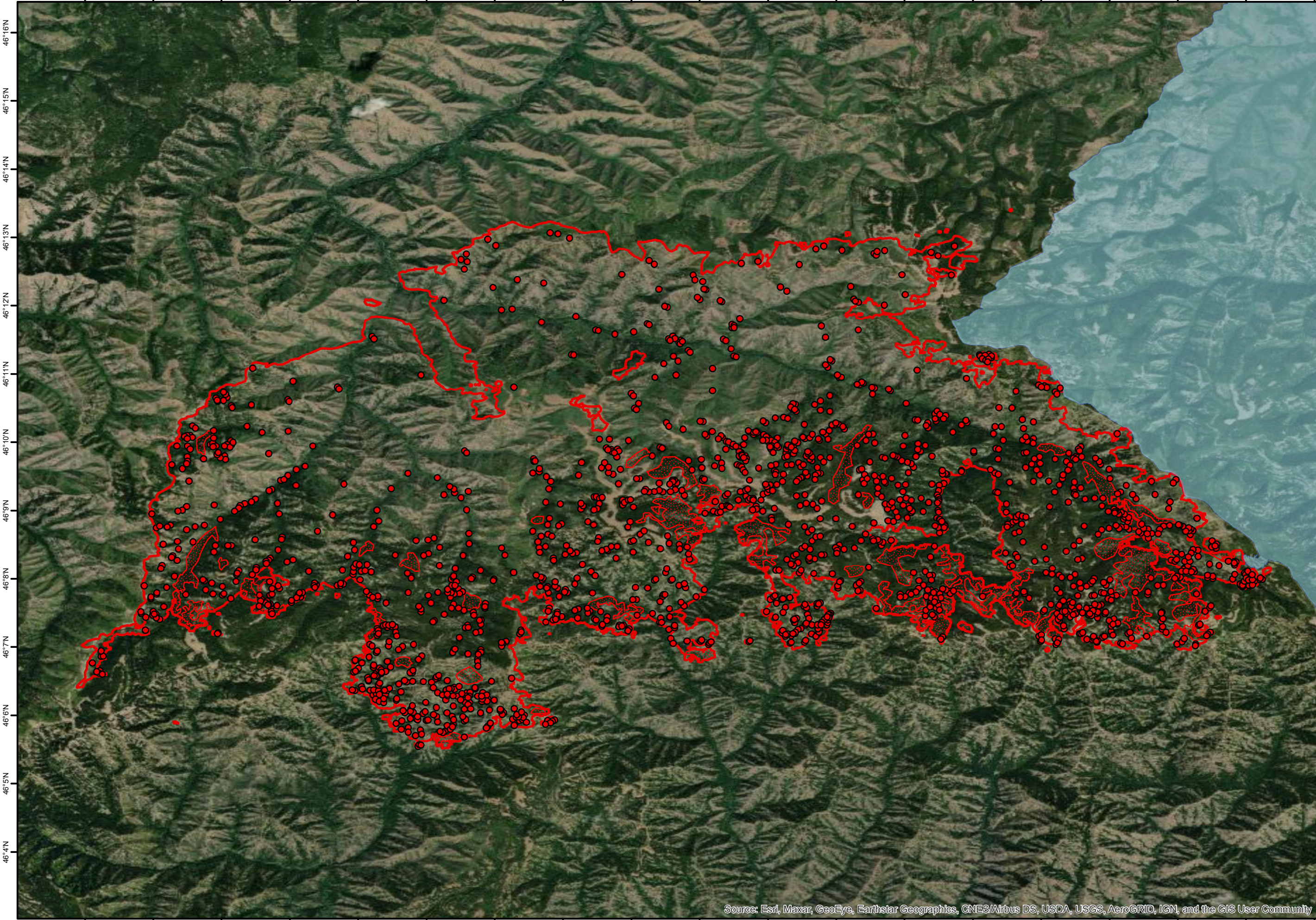


117°47'W 117°46'W 117°45'W 117°44'W 117°43'W 117°42'W 117°41'W 117°40'W 117°39'W 117°38'W 117°37'W 117°36'W 117°35'W 117°34'W 117°33'W 117°32'W 117°31'W 117°30'W 117°29'W



46°16'N  
46°15'N  
46°14'N  
46°13'N  
46°12'N  
46°11'N  
46°10'N  
46°9'N  
46°8'N  
46°7'N  
46°6'N  
46°5'N  
46°4'N

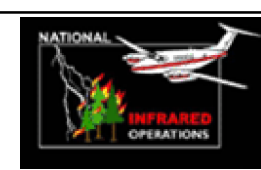
**Green Ridge**  
**OR-UMF-000659**  
**Infrared Heat Sources**  
 1:95,000

- Heat Perimeter
- Intense Heat Areas
- Scattered Heat Areas
- Isolated Heat Sources
- Lick Creek Perimeter

GCS WGS 1984

Miles  
 0 0.5 1 2

Notes:



IR Interpreter: Brian Monroe  
 IR interpreted acres: 39,598  
 Date: 08/28/2021  
 Scan Date: 08/27/2021  
 Scan Time: 2003 hrs PDT

117°47'W 117°46'W 117°45'W 117°44'W 117°43'W 117°42'W 117°41'W 117°40'W 117°39'W 117°38'W 117°37'W 117°36'W 117°35'W 117°34'W 117°33'W 117°32'W 117°31'W 117°30'W 117°29'W

Source: Esri, Maxar, GeoEye, Earthstar Geographics, CNES/Airbus DS, USDA, USGS, AeroGRID, IGN, and the GIS User Community