

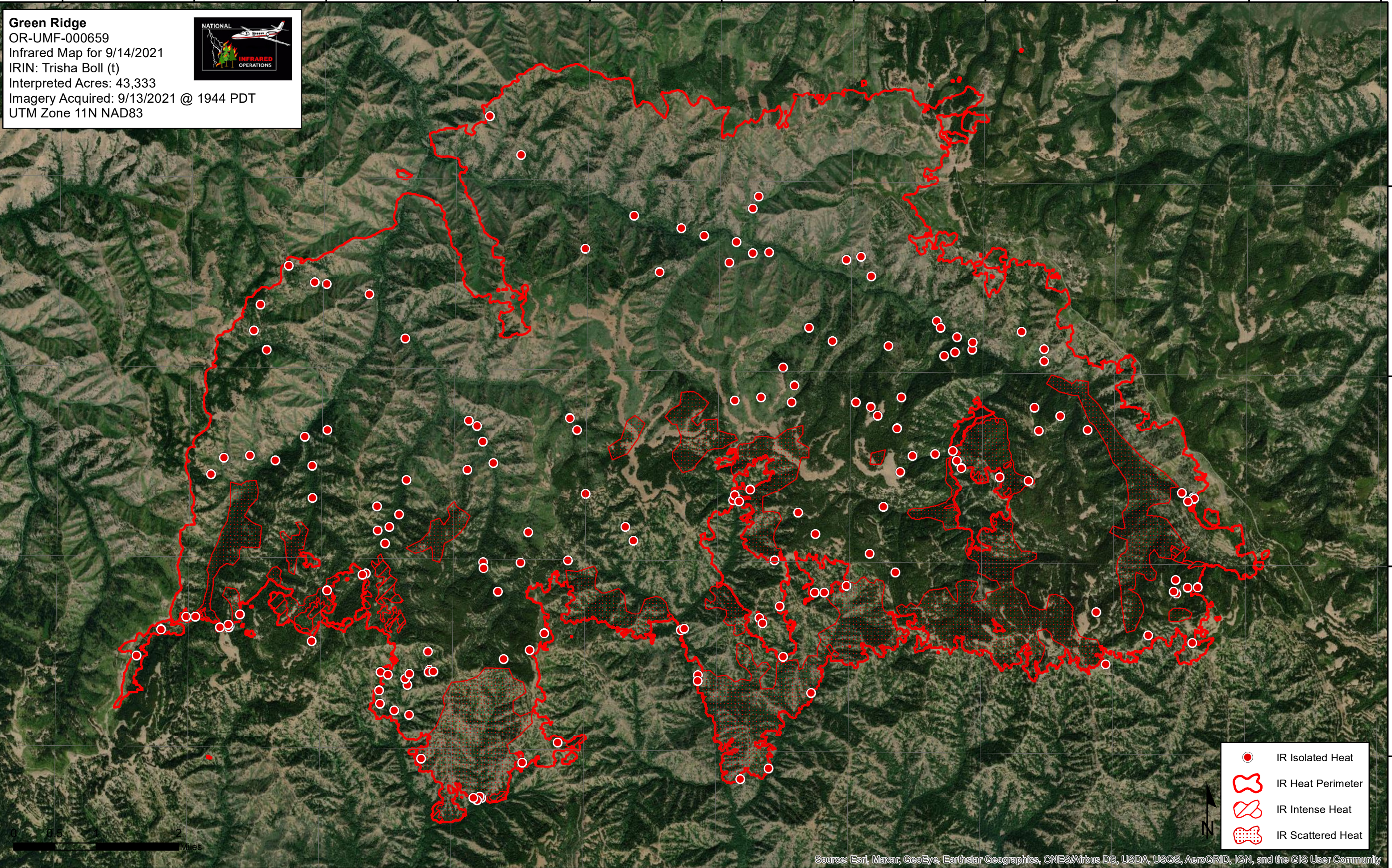
117°48'0"W 117°46'0"W 117°44'0"W 117°42'0"W 117°40'0"W 117°38'0"W 117°36'0"W 117°34'0"W 117°32'0"W 117°30'0"W 117°28'0"W





**Green Ridge**  
OR-UMF-000659  
Infrared Map for 9/14/2021  
IRIN: Trisha Boll (t)  
Interpreted Acres: 43,333  
Imagery Acquired: 9/13/2021 @ 1944 PDT  
UTM Zone 11N NAD83



46°12'0"N  
46°10'0"N  
46°8'0"N  
46°6'0"N

46°12'0"N  
46°10'0"N  
46°8'0"N  
46°6'0"N



-  IR Isolated Heat
-  IR Heat Perimeter
-  IR Intense Heat
-  IR Scattered Heat



Source: Esri, Maxar, GeoEye, Earthstar Geographics, CNES/Airbus DS, USDA, USGS, AeroGRID, IGN, and the GIS User Community

117°48'0"W 117°46'0"W 117°44'0"W 117°42'0"W 117°40'0"W 117°38'0"W 117°36'0"W 117°34'0"W 117°32'0"W 117°30'0"W 117°28'0"W